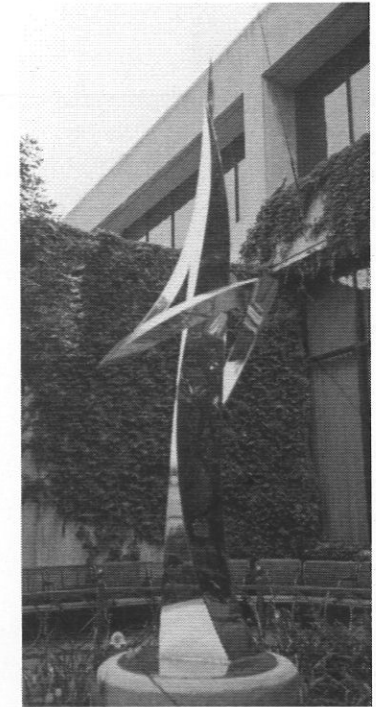


Map Legend

1. "Tribute" by James Russell, 1999, Charles H. Walsh Jr. Memorial, Riverside Park, N. Front St.
2. VAPA Student Mural, 1996, Audubon Art River Project directed by David Garrison, Jackie Swink and Rex Brockett, North side of Welcome Center
3. "History of Burlington" by David Garrison, 1988, Chamber of Commerce Project, inside the Welcome Center
4. First Capital of Iowa Territory Granite Memorial, 1987, Burlington Woman's Club, inside the Welcome Center
5. Bronze Sidewalk Tiles, 1998, designed by Shirley Bliven, David Garrison, Jim Knapp, Karla Mundt and Sheri Peterson, along Riverfront Plaza
6. "Statue of Liberty" reduced scale version of Frederic Auguste Bartholdi's "Liberty Enlightening the World," 1949, Boy Scouts of America, Riverfront Plaza
7. Veterans' Memorial, Riverfront Plaza
8. "River and Rails of Burlington" mural by Carl Homstad, 1985, Art Guild of Burlington and the Iowa Arts Council, 109 N. Main St.
9. "John H. Witte Jr. Memorial Sculpture" by James Russell, 2001, Stained Glass Circles by Pat Latty, 2001, Witte Foundation and U.S. Bank, Main and Jefferson Sts.
10. KCPS Mural, 1990, designed and painted by Jena & Arne Hausknecht, David Garrison, Valerie Leedom, Jim Hilkin, Karoll & Blaine Taylor, C.J.H. Schmidt and others, 406 N. Main St.
11. Burlington Building, Bronze Casting, "Eagle" by J. Moigrie, 320 N. 3rd St.
12. Youth Center, Acrylic on Canvas by Burlington Middle School Students, 2001, and Mural Project by Burlington High School Art Club, 2002, 501 Jefferson St.
13. Nancy Neafie Park Bronze designed by Christopher Bennett, constructed by Christopher Bennett, Chad Klein, Matt Krantzler and Travis Hunt, 2000, Nancy Neafie Park Memorial Fund, 521 Jefferson St.
14. Arts For Living Center Sculpture Garden, "Sugar Free" designed by Paul Gerdes, constructed by Burlington High School Welding Students, 1979, "Rhapsody" by James Russell, 1987, "Tile Wall" designed by David Stone, constructed by 40 Art Guild members, 1987, inside Art Center permanent and changing art collection, 7th and Washington Sts.
15. Phelps House, Des Moines County Historical Society Art Collection, 521 Columbia St.
16. Burlington Public Library, Art and Sculpture Collection, library art tour at www.burlington.lib.ia.us/libtour/libtour.htm or reference desk, 501 N. 4th St.
17. Chamber of Commerce Art and Sculpture Collection, 2nd Floor River Park Place, 610 N. 4th St.

ART



MAD

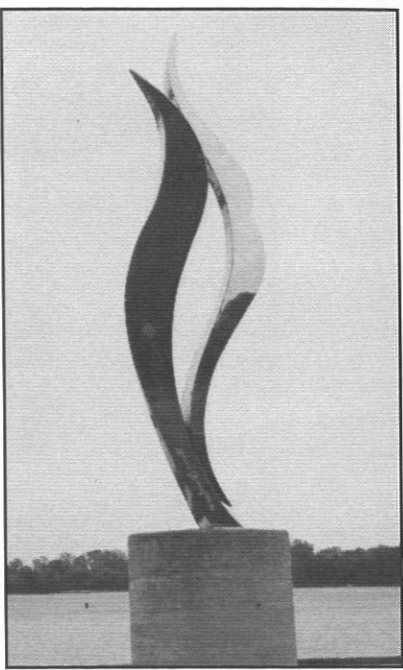
**Your Guide
to Public Art
in Downtown
Burlington, Iowa**

*Presented by Downtown Partners, Inc.
Public Art Committee
and Burlington Fine Arts League*

Photos Courtesy of Bobby Wilson

Welcome to Burlington, Iowa, the first territorial capital of Iowa. We invite you to stroll our downtown neighborhood with its majestic river view and historic buildings, enhanced by the addition of public art.

To begin the tour, we suggest that you take Front St., which is right next to the Mississippi River, north to the Riverside Park. Inside the park you can view a stainless steel sculpture designed and fabricated by California sculptor James T. Russell entitled "Tribute." This sculpture is one of three works by James Russell whose Witte Memorial Sculpture is pictured on our brochure cover.



"Tribute" ①
James T. Russell

Continuing along the riverfront, you will find a number of different art mediums represented in The Welcome Center/ River Plaza area. Murals inside the center include one by David Garrison, an accomplished local artist. Granite engravings, bronze sidewalk tiles and a restored stamped copper Statue of Liberty are

all part of the plaza park which has the Great River Bridge as a backdrop.

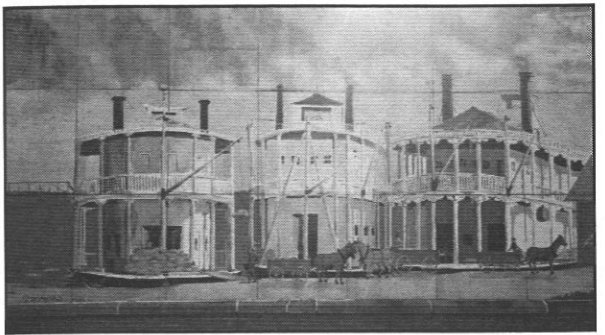


"History of Burlington" - David Garrison ③

As you head west from Front Street one block, Main Street features two murals, one in the 300 block and one in the 100 block. There is a second sculpture by Russell in the 200 block

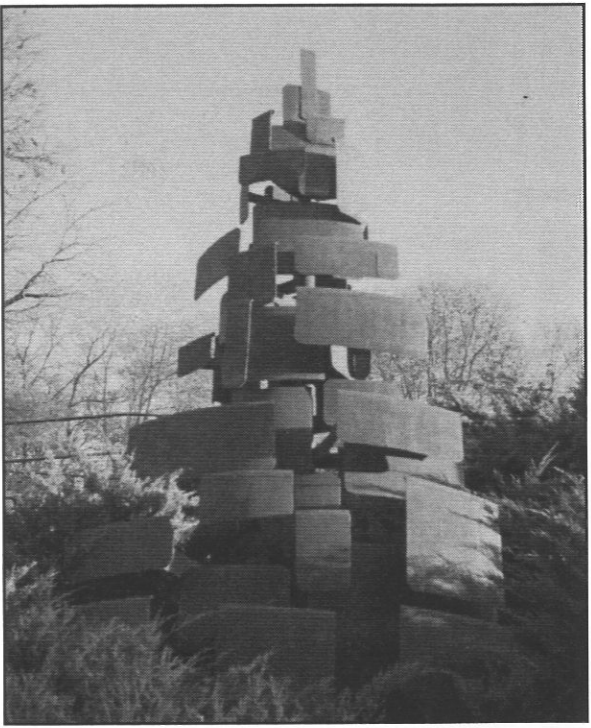


Nancy Neafie Park Bronze ⑬
Christopher Bennett

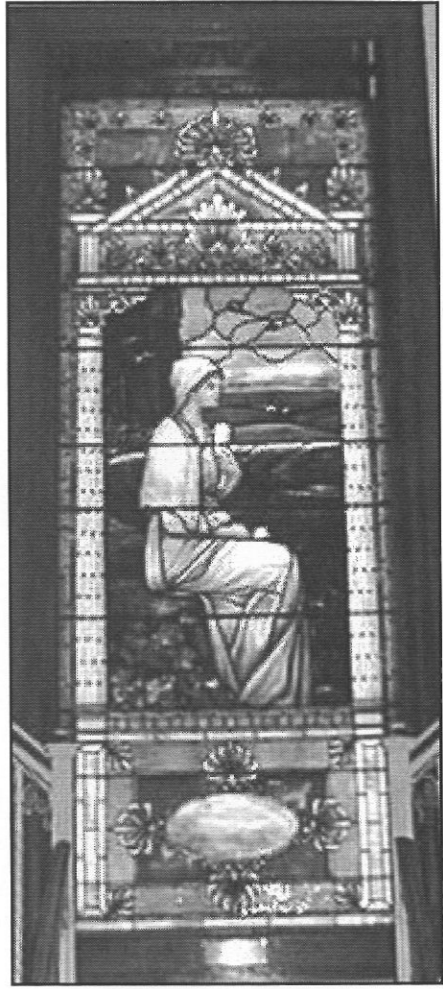


"River and Rails" - Carl Homstad ⑧

of Main, with an easy connection to the Burlington Building which features bronze castings in the lobby. A stop at Nancy Neafie Park is a must with its welded plate bronze sculpture serving as the centerpiece of this garden oasis created in memory of Burlington's first female mayor. The park is located on 6th St., which leads you



"Sugar Free" - Paul Gerdes ⑭



"Hypatia" ⑯
Flanagan and Biedenweg of Chicago
donated by Philip Crapo

building offers a fully documented virtual art tour on their computer, which can be used as a guide to their art and sculpture collection and includes the stained glass artwork entitled "Hypatia" pictured here.

We hope you enjoy your art tour of Burlington's Historic Downtown.

For more information visit www.cctb.com.

to the Arts for Living Center on Washington St., another must see sculpture garden. Don't forget to view the changing art display inside as well. The final areas of interest are just a few blocks away in the Heritage Hill neighborhood. The Burlington Public Library