

— VISIT —
GREATER BURLINGTON
IOWA





FunCity

RESORT

- Family-Fun Arcade
- Award Winning Bowling
- Indoor Go-Kart Track
- Dynamic Dining Options
- Huck's Harbor Water Park
- Cold Stone Creamery



- PointsBet Sportsbook
- Hot Table Game Action
- Players' Club Rewards
- Over 600 Slot Machines
- Exciting Monthly Promotions
- Luxurious Spa Facilities



STAY AT ANY OF OUR FOUR HOTELS



WWW.FUNCITYRESORT.COM • BURLINGTON, IA

Welcome

That's how you will feel in GREATER BURLINGTON.

Experiencing Greater Burlington means strolling through our historic downtown, soaking in breath-taking views of the Mississippi River, perusing the unique shops and boutiques, and feasting on the nearly endless dining options. It means exploring the many miles of trails and outdoor spaces our parks offer. It means discovering the rich history of the first territorial capital of Iowa and one of the state's oldest cities. It means discovering the museums, waterpark, and hours of family fun to be had. It means taking in a live show, an art exhibit, a symphony concert, a theater performance, or one of the many offerings in one of Iowa's Cultural & Entertainment Districts. Most of all, it means discovering the friendly community of people who call the biggest small town in Iowa home.

Welcome to
**Greater
Burlington!**





Snake Alley



What's Inside

8 FEELING ARTSY
Explore your creative side and see why Arts and Culture are the soul of Greater Burlington!



12 FOLLOW YOUR TASTEBUDS
With delectable dishes to please every palate, the only challenge will be choosing your next favorite dining experience.



18 FAMILY FUN
No matter the size of your clan, days and days of fun-filled and family-friendly adventures await you in Greater Burlington.



24 LET'S GO SHOPPING
Unique boutiques and shops offer an eclectic array of shopping experiences, including an idyllic riverfront downtown commercial district.



26 GET OUTDOORS
Enjoy the fresh air and explore all of the hunting, fishing, hiking, and biking opportunities in Greater Burlington.



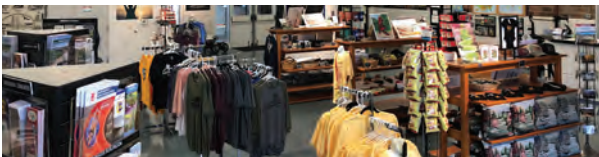
34 SPORTS IN GREATER BURLINGTON
Breaking a sweat is no sweat in Greater Burlington, with parks and trails, basketball courts and soccer fields, traditional and disc golf courses... and of course, pickleball!



38 WHERE TO STAY
Whether booking a room at your favorite franchise or staying in a unique boutique hotel or bed & breakfast, find the perfect accommodations for relaxing after a fun-filled day in Greater Burlington.



Featured PLACES



Port of Burlington Welcome Center
400 N Front Street



Snake Alley
6th Street between Columbia and Washington Streets



Des Moines County Heritage Museum
501 N 4th Street



Mosquito Park
Corner of N 3rd and Franklin Streets



Garrett-Phelps House
521 Columbia Street



Des Moines County Freedom Rock
510 Main Street
(Mediapolis, Iowa)



The Anne Frank Connection
102 N Main Street
(Danville, Iowa)



Mississippi Valley Veterans Memorial
W West, 405 Division Street (West Burlington, Iowa)



Burlington by the Seasons



Spring

Each new year offers an array of family-friendly events in Greater Burlington!

Area favorite SnowBull, Iowa's only three-day indoor rodeo event, packs the Burlington Memorial Auditorium each March. As the weather gets warmer, head to 34 Raceway in West Burlington for feverish dirt-track racing excitement.

Late spring serves up one of the best views of Greater Burlington's iconic Snake Alley, with colorful trees offering the perfect backdrop for photographers and families looking for the perfect vacation photo!



Summer

With the Mighty Mississippi River as its front door, boating and fishing enthusiasts flock to Greater Burlington during the summer months.

Events like the Summer Concert Series, the Carnival of Heritage Days, the Snake Alley Criterium, and the Snake Alley Art Fair draw families to the riverfront each year. The Fourth of July Celebration in West Burlington offers a full day of family-friendly activities, ending with the largest fireworks display in the area. The Jefferson Street Farmers Market, Thursdays from late spring into autumn, is a favorite of locals and visitors alike.



Fall

Seasonal events for the entire family and endless ways to enjoy the outdoors are just some of the reasons why autumn and Greater Burlington are a perfect combination!

For hiking & biking enthusiasts, the cornucopia of area parks offers miles of trails to explore, each with snap-worthy views of fall colors. Events like the Burlington RecPlex Monster Match soccer tournament and the spooky-season favorite Haunted Auditorium offer thrills to visitors each year.



Winter

The bustling riverfront downtown district offers a perfect snowy backdrop for the holiday shopping season! Get into the spirit with area favorite events like the Lighted Holiday Parade, Living Windows, and Santa's Cottage.

Outdoor enthusiasts will discover new favorite spots for ice fishing at Lake Geode and cross-country skiing at Starr's Cave, while those who like their winter sports a little warmer will enjoy a pickleball match or basketball game at the FunCity Courts.

By the Numbers



Population

38,533



Average Household Income

\$74,982



Median Home Value

\$147,655

ART & Culture

Arts & Culture

abound in Greater Burlington! With events like the Snake Alley Art Fair, the Old Couch Music Festival, and the Snake Alley Festival of Film, it's little wonder Downtown Burlington was named an Iowa Culture and Entertainment District. Whether strolling through the Art Center of Burlington, taking in a performance at the Capitol Performing Arts Center or the Players Workshop, or catching a live show at one of the many music venues, you can find endless opportunities to explore your creative side.

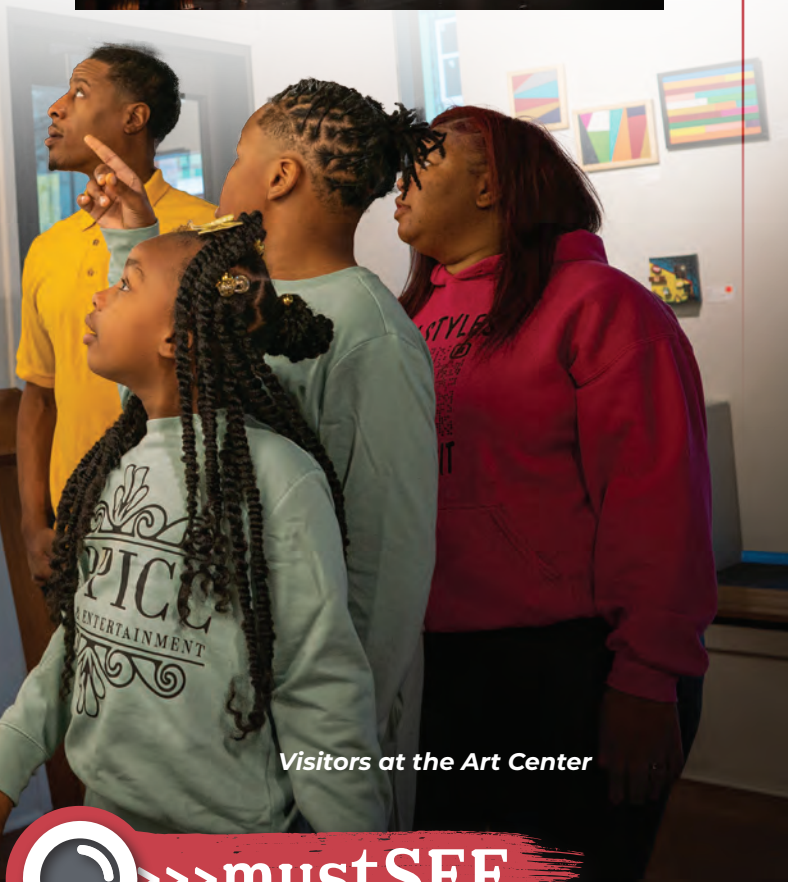
explore your **CREATIVE** side



Burlington Municipal Band



Players Workshop



Visitors at the Art Center



>>> mustSEE



Mayfly Mayhem

Can you spot all of the Mayflies in Downtown Burlington?

Stop by the Art Center of Burlington for a guide to Mayfly Mayhem!

Snake Alley Art Fair



ACB
Art Center of Burlington
STOWNART.COM
301 JEFFERSON STREET
BURLINGTON, IOWA

**WHERE
CREATIVITY +
COMMUNITY
COLLIDE**

- **Movies**
- **Live Music**
- **Live Comedy**
- **Youth Programs**
- **Cocktail Lounge**
- **And More!**



**THE
CAPITOL**
211 N. 3rd St.
Burlington, IA

www.BurlingtonCapitolTheater.com

ART CENTER OF BURLINGTON PRESENTS



**56TH ANNUAL
SNAKE
ALLEY
ART FAIR**
SUNDAY, JUNE 18, 2023
PAINTING BY [unreadable]

ARTISTS + LIVE MUSIC + GOOD EATS
HERITAGE HILL HISTORIC DISTRICT
BURLINGTON, IOWA

SPONSORED BY STANDARD OF BEVERDALE
INNOVATIVE EYES: DR. ERIC O'BRIEN, OD
THE NEW MOX 107.5 / 97.3 HOT FM / AIM CREDIT UNION



**BURLINGTON
MUNICIPAL
BAND**

Crapo Park Bandshell
Sundays 7:30 p.m.
June through early August



Visit our page
for more
information!

Find us on 

Enjoy a Burlington Civic Music performance at the Burlington Memorial Auditorium autumn through spring. Relax during a Burlington Municipal Band concert in Crapo Park in the summer. Catch an exhibit at the Harry and Virginia Murray Art Gallery in Southeastern Community College's West Burlington campus. Take a trip to explore the arts and discover the soul of Greater Burlington.



Capitol Performing Arts Center



Discover Works of Art in Greater Burlington

- 📍 **Welcome To Burlington Mural**
Corner of Main and Columbia Streets
- 📍 **Port of Burlington Welcome Center Mural**
400 N Front Street
- 📍 **3rd Street Mural**
301 Jefferson Street
- 📍 **The Busted Cup Brewhouse Murals (inside)**
724 Jefferson Street
- 📍 **Peacock Selfie Mural**
Corner of Main and Angular Streets
- 📍 **Statue of Nancy Neafie**
Corner of Jefferson and 6th Streets

Scan Me



[For More Info]

Scan the code for more Arts & Culture in Greater Burlington

FOLLOW YOUR

Taste Buds

Find out why Greater Burlington is the foodie capital of Southeast Iowa!



Martini's Grille



Queso's Mexican Bar & Grill



Boogaloo Sports Bar & Grill



**The Busted Cup
Brewhouse**

PHOTO COURTESY OF KIMANNE PHOTOGRAPHY



The Drake

Delectable dining

options can be found everywhere you look in Greater Burlington! After enjoying a day of family fun at FunCity Resort or feeling the rush of excitement at Catfish Bend Casino, stop into Boogaloo Sports Bar & Grill and refuel for your next adventure. Looking for an unforgettable dining experience with scenery to match? Head up to Martini's Grille, where every dish comes with a stunning view of the Mississippi River. For those perusing the boutiques and shops that line Downtown Burlington, the only challenge will be choosing from one of over twenty eateries and drinkeries, including delectable dishes at Good Restaurant + Lounge, your favorite German fare at The Busted Cup Brewhouse, and local favorites Napoli's Pizza & Restaurant and Jerry's Main Lunch. If your Greater Burlington adventure takes you away from Downtown, have no fear – The Broadway Bar & Grill in West Burlington offers all of your Midwestern favorites, and Queso's Mexican Bar & Grill is sure to be a favorite for any size crowd.

>> mustSEE



Jerry's Main Lunch

Pull up to a stool and step back in time for the classic American Diner experience that is Jerry's Main Lunch.



Good Restaurant + Lounge



Drink it up



Lindon Wines
Vineyard



Coffee and Tea

aficionados rejoice! Whether you prefer a White Mocha Latte, Ghostly Pumpkin Mocha, Boba Tea, or good ol' Cup of Joe, Greater Burlington has the perfect place to quench every thirst. Check out local mainstays Dame Fine Coffee, The Beancounter Coffeehouse and Drinkery, and Dunn Brothers Coffee for all of your favorite brews.

If it's a tippie you seek,

Greater Burlington has you covered! Sample the selection of home brews at The Busted Cup Brewhouse and Parkside Brewing Company. Peruse the incredible selection of wines at Corked 101, the array of whiskey and signature cocktails at La Bohème, or your favorite adult beverage at the Night Cap Listening Lounge. For an unforgettable wine tasting straight from the source, visit the vineyard at Lindon Wines. Taking it with you? Stop into Concordia Wine and Cigars and choose from a vast selection of wines.

PUB CRAWL

- **The Buffalo Tavern**
2016 S Main St
- **The Busted Cup Brewhouse**
724 Jefferson St
- **Farney's**
702 Jefferson St
- **Paddle Wheel Lounge**
613 Jefferson St
- **V.O.'s MMXV**
500 Jefferson St
- **Valley Monster Pub**
217 Valley St
- **The Outpost Bar & Grill**
2505 Mount Pleasant St
- **Buffalo Wild Wings**
1053 Lawrence Dr



*The Beancounter
Coffeehouse & Drinkery*



**Downtown Burlington's
Hottest New Restaurant
& Microbrewery!**



Flavorful craft beers brewed onsite

Enjoy German-American cuisine

Relax on the Biergarten

Shop Poppie's Specialty Market

724 Jefferson Street, Burlington, IA 52601 · 319-671-7040

[f thebustedcupbrewhouse](https://www.facebook.com/thebustedcupbrewhouse) [i thebustedcup.brewhouse](https://www.instagram.com/thebustedcup.brewhouse)

The **DRAKE**
...on the Riverfront

319-754-1036 | TheDrakeRestaurant.com
106 Washington Street, Burlington, Iowa

The golden arches,
just around the bend.

Order ahead
in the app

900 WELLSHIRE DRIVE, BURLINGTON, IA
1725 ROOSEVELT ROAD, BURLINGTON, IA
At participating McDonald's. ©2023 McDonald's.

Hy-Vee[®]

GET FREE HY-VEE PERKS

Make The Switch.

Already a member? Update your information to get new PERKS

Hy-Vee.com

939 Angular St
Burlington, IA
319-752-3657

3140 Agency St
Burlington, IA
319-753-1616

Create an Account

Hardee's
GOODNESS
IN THE MAKING

BREAKFAST
BACON, EGG & CHEESE BISCUIT COMBO

LUNCH
5-PIECE HAND-BREADED CHICKEN TENDERS COMBO

DINNER
FAMOUS STAR COMBO, MILKSHAKE & APPLE TURNOVER

907 Lawrence Drive

©2023 Hardee's/Goodman's U.S. All rights reserved.

Home of the Original Hot Mess

Jerry's
Main Lunch
Since 1946

We serve breakfast all day long and our daily specials are posted on Facebook every week.

Jerry's Main Lunch has been a staple in Burlington for over 75 years

Jerry's Main Lunch
501 S. Main Street
Burlington, Iowa 52601
319-752-3750

Hours: Monday - Friday, 4 AM - 7 PM;
Saturday, 4 AM - 4 PM; Sunday, 4 AM - 2 PM

McALISTER'S
DELI
GREAT FOOD BRINGS US TOGETHER

McAlistersDeli.com
319-576-5511
3180 E Agency St, Ste 120 | Burlington, IA 52601



Scan Me

[For More Info]
Scan the code for more Great Food Experiences

Itinerary

Progressive Dinner

- Appetizer**
Corked 101
Begin your dining adventure with delicious starters at Corked 101. Pair one of the fantastic charcuterie board, fondue, or flatbread pizza options with a selection from the vast wine menu.
- Main Course Option**
Martini's Grille
Fine dining and an unbeatable atmosphere await you at Martini's Grille! Exquisite food served with an unmatched view of the Mississippi River, located on the 4th floor of River Park Place.
- Main Course Option**
Hawaiian Cafe
Looking for something out of the ordinary? This one-of-a-kind eatery offers a unique dining experience with a Pacific Midwest twist on cuisines from around the world.
- Main Course Option**
Good Restaurant + Lounge
Located in the oldest stone building in Burlington, Good Restaurant + Lounge will offer the discerning palate a unique and unforgettable dining experience.
- After Dinner Drinks**
La Bohème
Relax and enjoy an adult beverage in this brand-new lounge, offering an array of whiskey and signature cocktails.

FAMILY

Fun



Huck's Harbor

GREATER BURLINGTON is the perfect destination for families!

No matter the size of the brood or range of ages, families can easily fill a weekend full of fun and make memories that will last a lifetime!

For days full of fun and entertainment, look no further than FunCity Resort. Thousands of families each year enjoy bowling, go karts, laser tag, obstacle courses, a waterpark and arcade, with multiple hotel and dining options, all located under one roof.



KingPins Bowling Alley



Juneteenth

Families seeking fresh air and wide open spaces will find room to explore in Greater Burlington's many parks and preserves. Miles of trails and scenic views can be found at Mosquito Park, Starr's Cave, Geode State Park, and Big Hollow Recreation Area. The myriad of city parks offer the perfect spots to enjoy a picnic or take in a relaxing river view.

If history and education are on the itinerary, spend an enriching afternoon at the Heritage Museum and take a stroll through the Garrett-Phelps House. Located just blocks from Snake Alley, a glimpse of Greater Burlington history offered in these iconic Burlington buildings will broaden the minds of even the hardest to impress.



Huck's Harbor



34 Raceway

PHOTO COURTESY OF DANA ROYER



Community Field - Home of the Burlington Bees



>>> **mustSEE**

Mosquito Park

Located on the corner of Franklin and North 3rd Streets, Mosquito Park was named for its diminutive size. This iconic Burlington destination offers a breathtaking, panoramic view of the Mississippi River from high atop a bluff just north of the downtown district.

Scan Here ↘



KENNY'S ROLLER RANCH & REC CENTER

- SKATING • PARTIES • GOLF
- BATTING CAGES
- BASKETBALL BANKSHOT



319-752-2043

KENNY'S ROLLER RANCH.COM
8989 Koestner Avenue | Burlington, IA 52601





Coming to 616 - 620 Jefferson Street in 2024!



SCAN ME



Jurassic Quest



Driving Down Snake Alley

From a round of putt-putt golf to an afternoon of roller skating, from catching an exciting game of Prospect League baseball to taking in a thrilling dirt-track race, Greater Burlington offers an endless array of family fun activities. With so much to explore and experience, the only challenge will be fitting everything into one visit!



Mosquito Park



Family Fun Checklist

- 🕒 Walk down “unbelievably crooked” Snake Alley
- 🕒 Explore FunCity Resort
- 🕒 Man the cannons in Crapo Park
- 🕒 Complete a lap at Kenny’s Roller Ranch & Rec Center
- 🕒 Walk the bridge to Starr’s Cave
- 🕒 Tour the Des Moines County Heritage Museum
- 🕒 Enjoy a Burlington Bees game at Community Field
- 🕒 Catch a race at 34 Raceway
- 🕒 Take in the view of the Mississippi River from Mosquito Park
- 🕒 Enjoy the inclusive playground in Dankwardt Park – brand new in 2024

Scan Me



[For More Info]

Scan the code for more Family Fun ideas

LET'S GO

Shopping

From boutiques to box stores, from mom & pops to familiar shops, you will find everything your heart desires in Greater Burlington! Stroll down Jefferson Street, the heart of the Downtown Commercial District, and discover your next favorite clothing store, vinyl record shop, or wine and liquor outlet. Drive down Roosevelt Avenue for an endless selection of retail options, with everything from sporting goods to groceries and pharmacies. Head down Agency into West Burlington for even more shopping destinations, including everything for your home and garden. Whatever is on your list, you'll find it in Greater Burlington!



Scan Me



[For More Info]

Scan the code for many more ways to shop in Greater Burlington

Traces
Boutique



HopeHavenCorp.com • 319-237-1140 • 617 Jefferson St, Burlington IA 52601



The Port of Burlington Welcome Center
 Your source of information for everything to do and see in the area is also the best place to find that perfect Greater Burlington keepsake!

Let us help you achieve your real estate dream

Ruhl & Ruhl
 REALTORS

Burlington Office
 403 S Gear Ave, Suite 105
 West Burlington, IA 52655

319-752-9933

RuhlHomes.com



Gal's Weekend

- 🕒 Shop the Downtown boutiques for a fabulous new outfit or the perfect new accessory
- 🕒 Check out the latest gallery show at the Art Center of Burlington
- 🕒 Discover your next favorite coffee flavor at The Beancounter Coffeehouse & Drinkery or DAME Fine Coffee
- 🕒 Relax and rejuvenate with a luxurious massage at Mission Medical Spa and a facial at Alchemy Skin and Health
- 🕒 Treat your tastebuds to one of the many unique local restaurants
- 🕒 Sample the vast wine menu at Corked 101



GET

Outdoors

GREATER BURLINGTON is the ideal destination for outdoor enthusiasts all year round! ◦



Mississippi River



Spring & Summer

Greater Burlington offers miles of inviting trails for hiking and biking, including Hunt Woods, Starr's Cave Park & Preserve, and the Flint River Trail. For even more scenic outdoor fun, enjoy canoeing and kayaking at Big Hollow Recreation Area and the accessible boat ramps at Geode State Park.

Feeling sporty? Pack your clubs and take on one of Greater Burlington's three golf courses, including Spirit Hollow, the #1 public course in Iowa. If you favor golf of the disc variety, Dankwardt Park offers a challenging course surrounded by stunning scenery. With the Mighty Mississippi River as its front door, Greater Burlington offers days of spring and summer fun for boating and fishing enthusiasts.

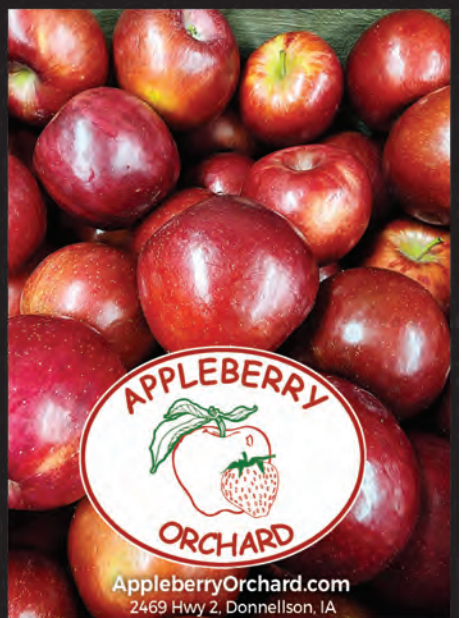


>>> **mustSEE**



Wildlife Lakes Elk Farm

Wildlife Lakes Elk Farm is a can't-miss for wildlife lovers. Visitors can spy trumpeter swans and Giant Canadian geese from winter through spring, and of course its namesake elk all year round.



*Three Stops,
One Amazing
Family Adventure*

Des Moines County Conservation

Scan to find parks, camping and other activities in Des Moines County

How will you get outside in Greater Burlington?
We have:

- * Lakes and ponds for fishing, paddling & swimming
- * Over 26 miles of trails
- * Over 100 campsites
- * 2000+ acres of natural areas to hunt, hike & see wildlife
- * Environmental education programs
- * ... and lots more!

www.DMCconservation.com

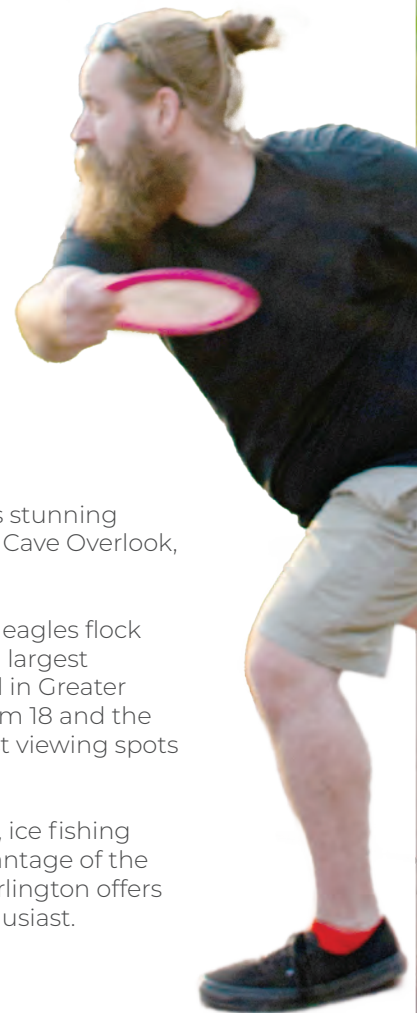


Fall & Winter

In the autumn months, Greater Burlington offers stunning landscapes for leaf peepers, including the Starr's Cave Overlook, Mosquito Park, and the Crapo Park Arboretum.

When the temperatures start to dip, fans of bald eagles flock to the banks of the Mississippi River. Some of the largest populations of these majestic birds can be found in Greater Burlington in the winter months, with Lock & Dam 18 and the banks near Sullivan Slough Road among the best viewing spots in the area.

From cross-country skiing on the Flint River Trail, ice fishing at Lake Geode or Big Hollow Lake, or taking advantage of the many surrounding hunting grounds, Greater Burlington offers something for every fall and winter outdoor enthusiast.



Scan Me



[For More Info]

Scan the code for more
Outdoor Adventures!



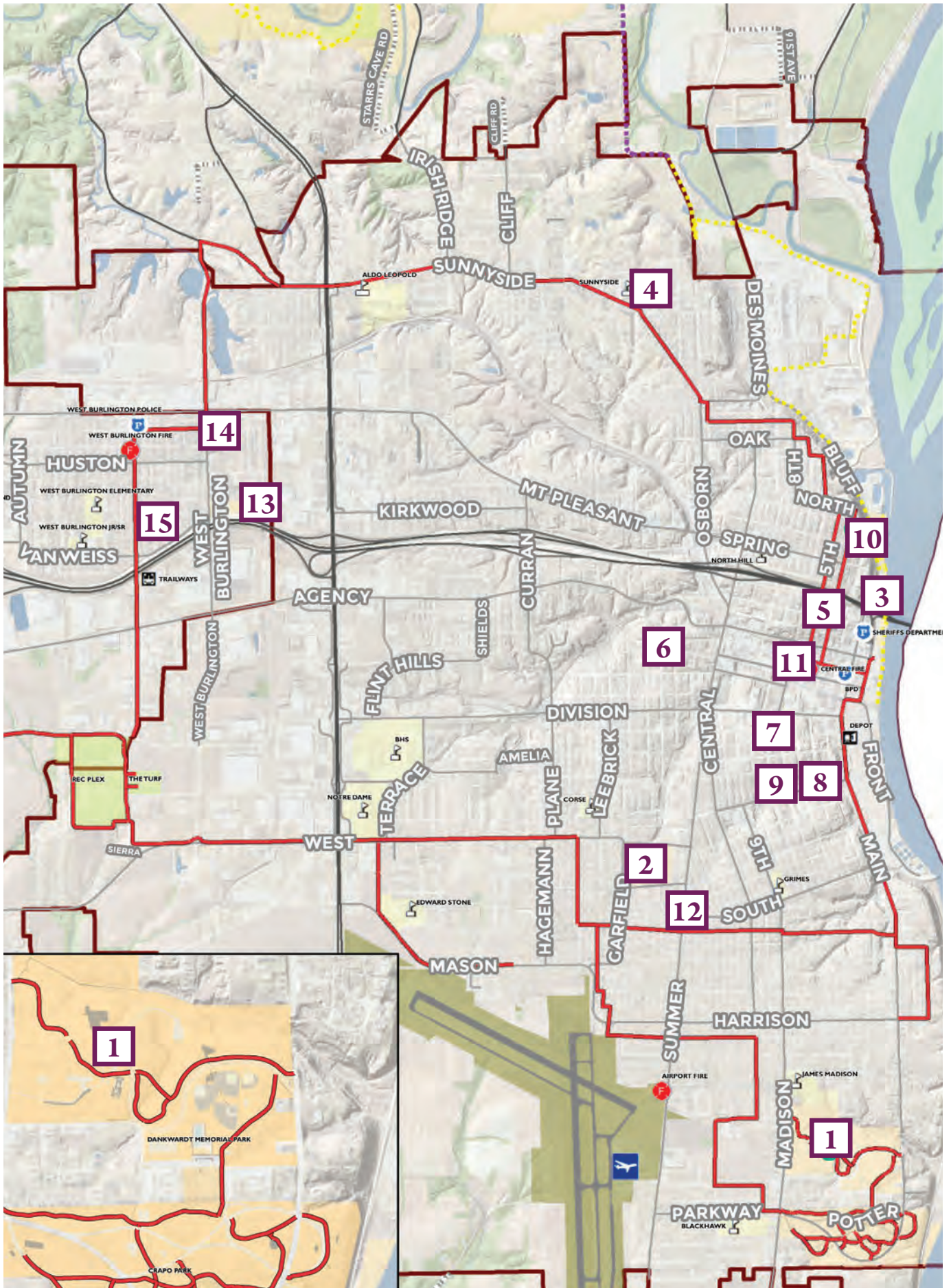
Itinerary

Outdoor Adventures

- Follow the Flint River Trail from the Burlington Riverfront to Starr's Cave Park & Preserve
- Find the cannons pointing out across the Mississippi River in Dankwardt Park
- Walk the entire trail around Lake Geode
- Score a round under par at the disc golf course in Dankwardt Park
- Take a selfie with the statue of Burlington's first female mayor in Nancy Neafie Park
- Cool off in the Dankwardt Park pool
- Take a snowy sled ride down one of the hills in Perkins Park



Dankwardt Park
Disc Golf



Discover Fun at one of the Many Nearby Parks

Burlington Parks

1:) Crapo / Dankwardt Parks

2800 S Madison Ave
700 Dankwardt Park Dr
157 Acres



2:) Perkins Park

1700 Dill St
18 Acres



3:) Riverside Park

Front St, N of Great River Bridge
4 Acres



4:) Sunnyside Park

Pilger Ave to Bertsch St
4 Acres



5:) North Hill Park

N 4th & Court St
1.7 Acres



6:) Saunderson Park

Valley & Marshall St
1.7 Acres



7:) South Hill Park

Valley & Marshall St
1.7 Acres



8:) DeEdwin & Gladys White Memorial Park

300 Angular St
1 Acre



9:) Kersch Park

525 S 6th St
0.5 Acre



10:) Mosquito Park

N 3rd & Franklin St
0.5 Acre



11:) Nancy Neafie Park

6th & Jefferson St
0.5 Acre



12:) Summer Street Park

1100 block of Summer St
0.5 Acre



West Burlington Parks

13:) Community Park

602 W Burlington Ave
2 Acres



14:) Luers Park

641 E Mt Pleasant St
2 Acres



15:) Pat Klein Park

205 Longmeadow St
2 Acres



Legend

Park

City Trail

Flint River Trail

Off - Road

Surface

Paved Surface

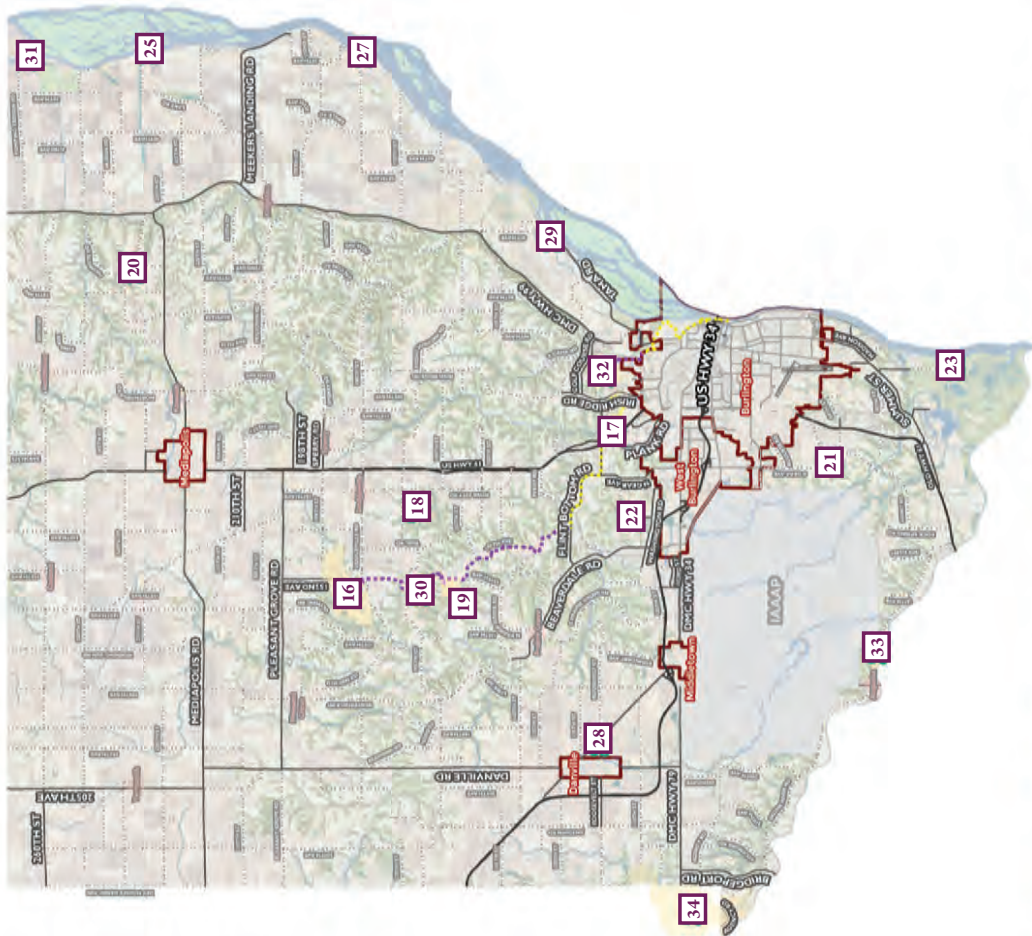
Gravel Surface

Key

- Shelter House
- Restroom
- Hiking
- Biking
- Fishing
- Swimming
- Hunting
- Boat Access
- Mississippi Access
- Historical Place
- Playground
- Picnic Area
- Pickle Ball
- Basketball
- Baseball / Softball
- Tennis
- Soccer
- Volleyball
- Disc Golf
- Horseshoes
- Camping
- Electrical Hook Up
- Dump Station
- Handicap Accessible

Area Parks

Des Moines County



16:) Big Hollow Recreation Area
18653 152nd Ave, Sperry
798 Acres

- Shelter House
- Restroom
- Hiking
- Biking
- Fishing
- Swimming
- Picnic Area
- Playground
- Mississippi Access
- Historical Place
- Boat Access
- Hunting



17:) Starrs Cave Park & Preserve
11627 Starr's Cave Rd, Burlington
184 Acres

- Shelter House
- Restroom
- Hiking
- Biking
- Fishing
- Swimming
- Picnic Area
- Playground
- Mississippi Access
- Historical Place
- Boat Access
- Hunting



18:) Linder Conservation Area
13807 170th St, Sperry
105 Acres

- Shelter House
- Restroom
- Hiking
- Biking
- Fishing
- Swimming
- Picnic Area
- Playground
- Mississippi Access
- Historical Place
- Boat Access
- Hunting



19:) Hickory Bend Recreation Area
16256 155th Ave, Sperry
175 Acres

- Shelter House
- Restroom
- Hiking
- Biking
- Fishing
- Swimming
- Picnic Area
- Playground
- Mississippi Access
- Historical Place
- Boat Access
- Hunting



20:) Lukenbill Woods
8295 Hawkeye Rd, Mediapolis
76 Acres

- Shelter House
- Restroom
- Hiking
- Biking
- Fishing
- Swimming
- Picnic Area
- Playground
- Mississippi Access
- Historical Place
- Boat Access
- Hunting



21:) Hunt Woods
12412 65th St, Burlington
58 Acres

- Shelter House
- Restroom
- Hiking
- Biking
- Fishing
- Swimming
- Picnic Area
- Playground
- Mississippi Access
- Historical Place
- Boat Access
- Hunting



22:) Kevin J. Gahn Memorial Recreation Area
Public Access Limited
13724 Washington Rd, Burlington
56 Acres

- Shelter House
- Restroom
- Hiking
- Biking
- Fishing
- Swimming
- Picnic Area
- Playground
- Mississippi Access
- Historical Place
- Boat Access
- Hunting



23:) Sullivan Slough
3175 Sullivan Slough Rd, Burlington
22 Acres

- Shelter House
- Restroom
- Hiking
- Biking
- Fishing
- Swimming
- Picnic Area
- Playground
- Mississippi Access
- Historical Place
- Boat Access
- Hunting



24:) Chautauqua Park
10530 Mediapolis Rd, Mediapolis
10 Acres

- Shelter House
- Restroom
- Hiking
- Biking
- Fishing
- Swimming
- Picnic Area
- Playground
- Mississippi Access
- Historical Place
- Boat Access
- Hunting



25:) Hawkeye Dolbee
4629 Lake Rd, Oakville
10 Acres

- Shelter House
- Restroom
- Hiking
- Biking
- Fishing
- Swimming
- Picnic Area
- Playground
- Mississippi Access
- Historical Place
- Boat Access
- Hunting

26:) Tama Beach

15518 Tama Rd, Burlington
3 Acres

- Shelter House
- Restroom
- Hiking
- Biking
- Fishing
- Swimming
- Picnic Area
- Playground
- Mississippi Access
- Historical Place
- Boat Access
- Hunting

27:) Casey Barrow

1867 180th St, Burlington
2 Acres

- Shelter House
- Restroom
- Hiking
- Biking
- Fishing
- Swimming
- Picnic Area
- Playground
- Mississippi Access
- Historical Place
- Boat Access
- Hunting

28:) Waters Roadside Park

19364 Roosevelt St, Danville
2 Acres

- Shelter House
- Restroom
- Hiking
- Biking
- Fishing
- Swimming
- Picnic Area
- Playground
- Mississippi Access
- Historical Place
- Boat Access
- Hunting

29:) Edgewater Beach

13290 Tama Rd, Burlington
1 Acre

- Shelter House
- Restroom
- Hiking
- Biking
- Fishing
- Swimming
- Picnic Area
- Playground
- Mississippi Access
- Historical Place
- Boat Access
- Hunting

30:) Zion School

16495 155th Ave, Sperry
1 Acre

- Shelter House
- Restroom
- Hiking
- Biking
- Fishing
- Swimming
- Picnic Area
- Playground
- Mississippi Access
- Historical Place
- Boat Access
- Hunting

31:) 4th Pumping Station

2075 Pumping Station Rd, Oakville
17 Acres

- Shelter House
- Restroom
- Hiking
- Biking
- Fishing
- Swimming
- Picnic Area
- Playground
- Mississippi Access
- Historical Place
- Boat Access
- Hunting

32:) Leopold Recreation Area

11816 Mill Dam Rd, Burlington
235 Acres

- Shelter House
- Restroom
- Hiking
- Biking
- Fishing
- Swimming
- Picnic Area
- Playground
- Mississippi Access
- Historical Place
- Boat Access
- Hunting

33:) Welter Recreation Area

16839 Skunk River Rd, Burlington
79 Acres

- Shelter House
- Restroom
- Hiking
- Biking
- Fishing
- Swimming
- Picnic Area
- Playground
- Mississippi Access
- Historical Place
- Boat Access
- Hunting

Geode State Park

34:) Geode State Park
3333 Racine Ave, Danville
1640 Acres

- Shelter House
- Restroom
- Hiking
- Biking
- Fishing
- Swimming
- Picnic Area
- Playground
- Mississippi Access
- Historical Place
- Boat Access
- Hunting

Shelter House	Hunting	Pickle Ball	Disc Golf
Restroom	Boat Access	Basketball	Horseshoes
Hiking	Mississippi Access	Baseball / Softball	Camping
Biking	Historical Place	Tennis	Electrical Hook Up
Fishing	Playground	Soccer	Dump Station
Swimming	Picnic Area	Volleyball	Handicap Accessible



Pride in the Park

Photo courtesy of Cody Flietner

Sports

& SPORTS VENUES

DISCOVER WHY

hikers, bikers, golfers, and sports fans of all stripes visit Greater Burlington each year!



Bickel's Cycling & Fitness



34 Raceway

Photo courtesy of Dana Royer

While the Flint River Trail is a checklist experience for hiking and bicycling enthusiasts, the opportunities offered by Greater Burlington's many trail systems are nearly endless. Basketball and volleyball fans can take to the hardwood at the FunCity Courts, and those looking for a little target practice can visit the Flint River Indoor Shooting Range and the archery range in Dankwardt Park. The Burlington Area YMCA offers a myriad of athletic options for active families.

FunCity Courts – Pickleball



>>> mustSEE

Scan Here

Pickleball!

New enthusiasts and seasoned pros alike will enjoy a game of the latest sports craze on the brand new pickleball courts inside FunCity Courts.



Monster Match Soccer

Pickleball fans and disc golf enthusiasts... Greater Burlington has you covered! Check out the pickleball courts located in the FunCity Courts facility and take on the challenging disc golf course at Dankwardt Park.

BURLINGTON REGIONAL
RecPlex



FEATURING:

- 5 Softball/Baseball Fields
- 8 Full-Size Soccer Fields

We host several Softball, Baseball & Soccer Tournaments throughout the season. For a full list of tournaments go to: www.teamsideline.com/burlington.

Looking to host a tournament? We have weekends available at very reasonable rates!

Contact the Burlington RecPlex at 319-758-9419 or danforthk@burlingtoniowa.org



Spirit Hollow

From duffers to seasoned pros, golfers of all skill levels will find their next favorite course in Greater Burlington, including **Spirit Hollow, the #1 public golf course in Iowa.** When bringing your clubs to Greater Burlington becomes an annual tradition, become a member of the Burlington Golf Club for even more opportunities to hit the links.

If watching the action is more your speed, Greater Burlington offers exciting sporting events all year round. In the springtime be sure to catch SnowBull, Iowa's only three-day indoor bull riding event. The grueling Snake Alley Criterium in Downtown Burlington is a must-see each summer, as are evenings spent catching an exciting Burlington Bees baseball game at Community Field and experiencing the thrill of dirt-track racing at 34 Raceway in West Burlington. In the fall and winter months, take in the many sports tournaments held at the Burlington Regional RecPlex, FunCity Turf, and FunCity Courts facilities.

Camp L-Kee-Ta

Danville, Iowa

Connect in nature in a serene setting!

Camp L-Kee-Ta is a versatile property! Host your elopement, corporate retreat, or weekend getaway in a beautiful setting with modern amenities.



Rustic Iowa Venues



Learn more!

Camp L-Kee-Ta is owned and operated by Girl Scouts of Eastern Iowa and Western Illinois.

Your rental supports life-changing outdoor programs for local Girl Scouts.



SPORTS VENUES



FunCity Turf



Burlington Regional RecPlex

Scan Me



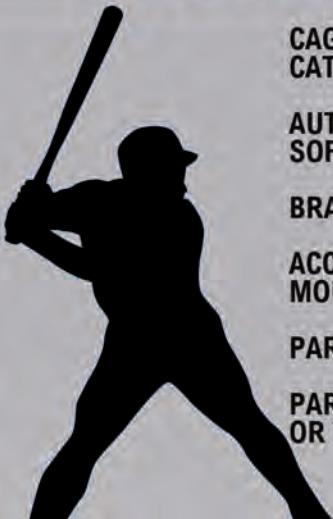
[For More Info]

Scan the code for more Sports Activities

LINE DRIVE

BATTING CAGES • TURF • HITTRAX • SPORTS TRAINING

725 South Roosevelt Ave, Burlington, IA
WWW.LINEDRIVEBURLINGTON.COM



CAGE RENTALS FOR HITTING, PITCHING, CATCHING & FIELDING (70' X 15' CAGES)

AUTOMATIC BATTING CAGES FOR BASEBALL & SOFTBALL - 3 DIFFERENT SPEEDS

BRAND NEW CLIMATE CONTROLLED FACILITY

ACCESS TO PITCHING MACHINES, PITCHING MOUNDS & HIT TRAX TECHNOLOGY

PARENT ROOM TO RELAX WITH FREE WIFI

PARTY PACKAGES AVAILABLE FOR BIRTHDAYS OR TEAM GATHERINGS



Itinerary

Get Out and Play!

🕒 Basketball

- FunCity Courts
- Burlington Area YMCA
- DeEdwin & Gladys White Park

🕒 Pickleball

- FunCity Courts

🕒 Hiking & Biking

- Flint River Trail
- Starr's Cave Park & Preserve
- Big Hollow Recreation Area
- Crapo Park
- Luers Park (West Burlington)
- North Gorge Trail
- Geode State Park

🕒 Golf

- Spirit Hollow
- Flint Hills Municipal Golf Course
- Burlington Golf Club

🕒 ...More Golf!

- Ready Golf
- Spirit Hollow Shankopotamus
- Black Water Mini Golf
- Kenny's Roller Ranch Miniature Golf

🕒 Sports Venues

- Burlington Regional RecPlex
- FunCity Turf
- FunCity Courts

🕒 Baseball

- Line Drive

REST YOUR

Head

Better pack an overnight bag...

there's too much Greater Burlington to experience in one afternoon! Thankfully, the myriad of lodging options makes spending a few nights comfortable and easy. Whether it's a cozy bed and breakfast close to the riverfront, a quiet room at your favorite franchise, or a suite for the entire family in a resort hotel, there's a perfect place to rest your head after your next Greater Burlington adventure.



>> **mustSEE**



Snake Alley Inn

(319) 850-4000 · 409 N 6th St

Located right on its namesake Greater Burlington landmark, Snake Alley Inn is one of many downtown bed and breakfast options.

Hampton Inn & Suites

(319) 237-0700
3001 Winegard Dr



Americinn

(319) 758-9000
628 S Gear Ave

Catfish Bend Inn & Spa

(319) 753-2946
3001 Winegard Dr



Comfort Suites

(319) 753-1300
1780 Stonegate Center Dr

Fairfield Inn & Suites

(319) 754-0000
1213 N Roosevelt Ave



FunCity Resort Hotel

(319) 753-2946
3001 Winegard Dr

Howard Johnson

(319) 208-2411
2759 Mount Pleasant St





The Lodge

(319) 752-0004
5592 Clubhouse Dr



Squirrel's Nest Bed and Breakfast

(319) 752-8382
500 North St

welcome to
Snake Alley Inn
*Enjoy your stay at a quaint house,
on a crooked street, by a mighty river.*



- > "A one of a Kind Location" Convenient downtown location near shops, restaurants and the Mississippi River
- > Enjoy our 3 bedroom, 2 bath rental on Ripley's Believe It or Not! #1 odd spot, Snake Alley
- > Reserve on AIRBNB, VRBO, HOMEAWAY

409 N 6th St, Burlington, IA | 319-850-4000



SnakeAlleyInn.net



Casino Getaway

📍 Friday Night – Get Your Feet Wet

- Check into your hotel. The Catfish Bend Casino complex has three hotels located under one roof!
- Grab dinner at the Boogaloo Café.
- Become a Players Club member at the Catfish Bend Casino to take your casino experience to the next level.

📍 Saturday Day – Explore Downtown Burlington

- Stroll through one-of-a-kind shops and boutiques in a picturesque riverfront downtown.
- Eat lunch at one of the 20+ unique eateries and drinkeries.
- Tour Heritage Hill Neighborhood – named to the National Register of Historic Places!
- Take in the exhibits at the Des Moines County Heritage Museum.

📍 Saturday Night – Lucky You!

- Enjoy dinner and a spectacular view of the Mississippi River at Martini's Grille.
- Find that streak of luck with more action at the Catfish Bend Casino.
- Have a nightcap at the casino bar.

📍 Sunday

- After lunch, take a tour of the historic Garrett-Phelps House Museum, located at the top of unbelievably-crooked Snake Alley.

Scan Me

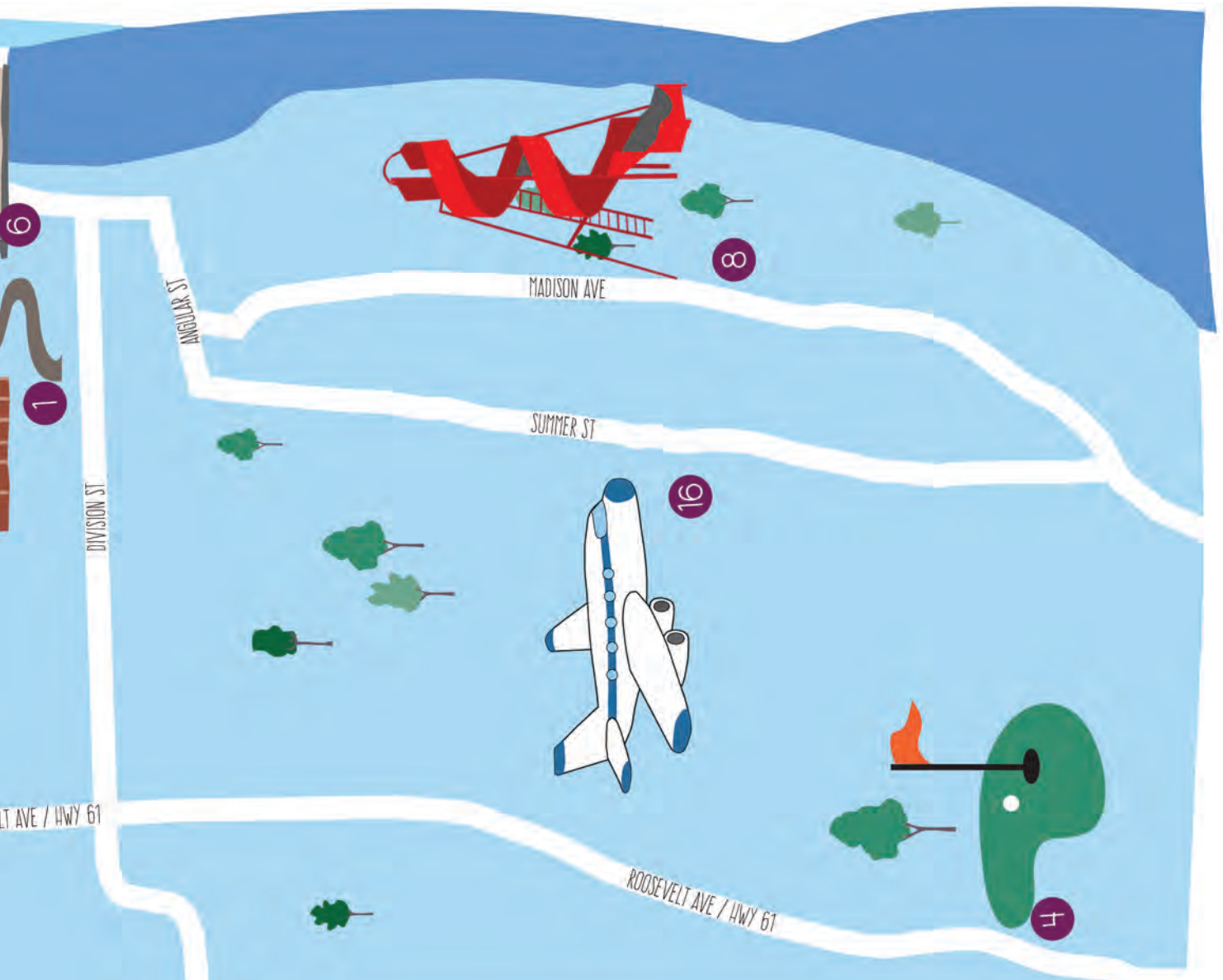


[For More Info]

Scan the code for lodging options in Greater Burlington

GREATER BURLINGTON







LEGEND

1. SNAKE ALLEY / DOWNTOWN BURLINGTON
2. FUNCTY / CATFISH BEND CASINO
3. 34 RACEWAY
4. SPIRIT HOLLOW GOLF COURSE
5. STARR'S CAVE PARK AND PRESERVE
6. PORT OF BURLINGTON WELCOME CENTER
7. MOSQUITO PARK
8. CRAFO PARK
9. ASPEN GROVE CEMETERY
10. COMMUNITY FIELD
11. OUR LADY OF GRACE GROTTTO
12. FUNCTY TURF
13. BURLINGTON RECPLX
14. FUNCTY COURTS
15. MISSISSIPPI VALLEY VETERANS MEMORIAL
16. BURLINGTON REGIONAL AIRPORT
17. SOUTHEAST IOWA REGIONAL MEDICAL CENTER
18. WEST BURLINGTON POOL
19. BLUFF HARBOR MARINA
20. FLINT HILLS GOLF COURSE







 **Howard Johnson by Wyndham**
319.208.2411
Scan me for more information... 
2759 Mount Pleasant St, Burlington, IA 52601



FLY FROM BURLINGTON ***AND MAKE YOUR WORLD-WIDE CONNECTIONS AT***



or



EASY CONNECTIONS TO:



 ***iFlySouthern.com***