



THE PARTNERSHIP

GREATER BURLINGTON PARTNERSHIP NEWSLETTER - VOL. 104 NO. 09





REDISCOVERING DOWNTOWN BURLINGTON: A HUB OF CULTURE, ENTERTAINMENT, AND INNOVATION

by Amy Moyner

Downtown Burlington has long been the beating heart of the community, a place where history meets innovation, and local culture thrives. With 24 businesses opening last year and 8 that have opened their doors this year, the entrepreneurial spirit is alive in Downtown!

Designated as a Cultural & Entertainment District, Downtown Burlington offers an eclectic mix of art, music, theater, dining, and shopping experiences. This designation recognizes the area's rich cultural heritage and dynamic arts scene, attracting visitors, new residents and locals alike to explore and engage with the many events and attractions that make the downtown unique.

Whether it's a stroll down Jefferson Street during the weekly Farmers Market, finding a treasure at A Very Vintage Market, spending an evening at the Capitol Theater and Auditorium, or enjoying live music at one of the local venues, there is always something happening in Downtown Burlington. This district is not just a destination, it's a vibrant community where creativity and culture come to life.

The recent awarding of the Open 4 Business grant to Thyme & Spice Co. is a testament to the spirit of entrepreneurship that permeates the downtown area. This grant, aimed at supporting small businesses in Main Street Iowa communities, provides essential funding that allows businesses to transform and grow.

As investments in the downtown area continue, there is no better time to rediscover what makes it so special. From its historic architecture to its diverse range of shops, restaurants, and entertainment venues, Downtown Burlington offers something for everyone.

With ongoing efforts to enhance the area's appeal through grants, events, and cultural initiatives, Downtown Burlington is more than just a place to visit, it's a place to experience. Everyone is encouraged to explore the new and familiar gems of Downtown Burlington, support local businesses, and be a part of the vibrant community that makes this area the true heart of the city.

Some of my favorite moments from this last month have been being able to spend time with my family eating a picnic lunch at the riverfront while my daughter played in the splash pad, watching artists paint the mural at the corner of 3rd and Jefferson, enjoying a hot dog while strolling through A Very Vintage Market and having a relaxing dinner on the patios of our amazing restaurants. I adore our community, but the staycations my family had this summer made us fall in love with the place we call home.

As the community looks to the future, Downtown Burlington remains committed to fostering a welcoming and dynamic environment where culture, entertainment, and business thrive. Whether someone is a lifelong resident or a first-time visitor, there is always something new to discover in the heart of Burlington, a place where "It's Happening!"

Eat. Drink. + Shop. Downtown Burlington, Iowa

Partnership Staff



Amy O'Brien
President & CEO
319-208-0043
aobrien@greaterburlington.com



Jeremy Hess
Dir. of Economic Development
319-208-0050
jhess@greaterburlington.com



Amy Moyner
Downtown Partners, Inc.
Exec. Dir. 319-208-0056
amoyner@greaterburlington.com



Chris Gram
Convention & Visitors Bureau
Exec. Dir. 319-208-0045
cgram@greaterburlington.com



Dustin Roth
Marketing & Communications
Dir. 319-208-0048
droth@greaterburlington.com



Crystal Jolin
Director of Finance
319-208-0044
cjolin@greaterburlington.com



Telisha Fedele
Talent Development Program
Manager 319-208-0046
tfedele@greaterburlington.com



Brenda Levitt
Graphic Designer
319-208-0047
blevitt@greaterburlington.com



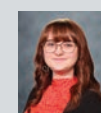
Melissa Jones
Interim Business Engagement
Manager 319-208-0052
mjones@greaterburlington.com



Mac Holford
Events Manager
319-208-0040
mholford@greaterburlington.com



Pamela Wright
Administrative Assistant
319-208-0042
frontdesk@greaterburlington.com



Kaylea Felland
Convention & Visitors Bureau
Prog. Coord. 319-752-8731
kfelland@greaterburlington.com

SUBSCRIPTIONS: Price is \$24, which is included in annual events fees. Non-members: \$4 per issue. Periodicals postage paid at Burlington, Iowa.
POSTMASTER: The Partnership is published monthly by the Greater Burlington Partnership 610 North 4th Street, Suite 200, Burlington, Iowa 52601.
POSTMASTER: send address changes to Greater Burlington Partnership (USPS 001-692) 610 North 4th Street, Suite 200, Burlington, Iowa 52601.



ON THE COVER

OPEN 4 BUSINESS GRANT AWARDED TO THYME & SPICE CO.

Travis and Ashlyn Long, who opened Thyme & Spice Co. in 2021, won a \$20,000 grant to expand their modern version of a spice and tea shop. They plan to use the money to introduce a refill program for a line of olive oils and vinegars. Customers can sample products before they buy, and empty bottles can be exchanged at the store for a discount on their next purchase.

Thyme & Spice Co. earned another \$1,000 for People's Choice, selected by audience vote.

The grants are administered through IEDA's Iowa Downtown Resource Center and Main Street Iowa programs.

Thyme & Spice Co., known for its carefully curated selection of spices, teas, and gourmet ingredients, embodies the essence of what makes Downtown Burlington special, quality, creativity, and a commitment to the community. The grant will enable the business to expand its offerings and continue providing unique products that draw both locals and visitors to the downtown area.

GREATER BURLINGTON PARTNERSHIP NAMES AMY O'BRIEN AS NEW PRESIDENT & CEO



Following a nationwide executive search for a visionary leader to lead the Greater Burlington Partnership, the Partnership has announced that Amy O'Brien has been selected as its new President

and Chief Executive Officer. O'Brien will take the helm of the Partnership on Monday, September 16, 2024.

The Greater Burlington Partnership's Joint Powers Board voted unanimously in favor of hiring O'Brien. Melinda Bickel, chair of the Greater Burlington Partnership board, said "Amy is a strategic, big-picture thinker with deep experience advocating for businesses of all sizes. Amy brings extensive experience spanning the public, private, chamber, downtown, and economic development sectors. She has the vision and strategic focus to take the Greater Burlington Partnership to the next level, advocating for our members and community."

"I am truly honored to have the opportunity to lead the Greater Burlington Partnership," said O'Brien. "I feel as if my entire career trajectory has led me to this position at the right time. The Partnership's work is vital to the business community and economic development, and I look forward to working with the boards, members, volunteers, and staff to grow the organization and to promote the community and ensure the livelihood of all local businesses in the Greater Burlington area. On a personal note, I am also looking forward to relocating back to Burlington and to reconnect with so many friends and colleagues."

O'Brien served as the Assistant City Manager and Director of Economic Development for the City of Mexico, Missouri. In this role, she implemented MainStreet Mexico, arranged for a professional video marketing showcase for business attraction and talent attraction, and played a key role in securing \$100,000 USDA grant to create a business incubator in downtown Mexico. Additionally, O'Brien served as the liaison with the Mexico Area Chamber and Progress Mexico providing business recruitment and retention services.

Before her position with the City of Mexico, O'Brien was the Chief Executive Officer of the Audrain Community Hospital also in Mexico, Missouri. There, she managed the transition of ownership from SSM Health System in St Louis to Noble Health and established two new specialty clinics for Orthopedics and Pain Management within the first year of operation.

In Burlington, O'Brien has held leadership roles as Vice President, Business Development & Engagement with Great River Entertainment and as Vice President of Physician Practices with Great River Health System. She holds a Master of Science degree from University of Central Missouri and a Bachelor of Science from Southeastern Louisiana University. She is skilled in operations management, government affairs, business development, workforce development and executive leadership.

O'Brien is married to Joe, athletic director for Southeastern Community College. They have three adult children and three grandchildren, as well as an "international son" from Croatia bringing their total number of grandchildren to six. In their spare time, they enjoy traveling to family and friends.

Ann Menke, chair of the CEO Search Committee stated, "We are pleased to have someone of Amy's caliber to lead our organization into the future. We welcome her back to Burlington and feel that her leadership, energy, and passion will complement the Partnership's program of work and challenge us to aim higher. Amy is an experienced collaborator, consummate leader, and true professional."

As the Partnership's President & CEO, O'Brien will oversee the staff and will report to the Chair of the Executive Committee of the Board of Directors. The President & CEO is responsible for providing overall leadership and management to the membership, boards, staff, and volunteers in executing the respective missions of the Partnership's organizations, along with financial management, marketing, membership development, fundraising, and overall operations. The President & CEO implements the annual business plan to meet the objectives of the approved Strategic Plan.

O'Brien said her first priorities will be to actively engage with the members to understand both their current and future needs and to meet as many people as possible to build the strong relationships needed to be successful as the leader of the Partnership.



2024
MANUFACTURERS
APPRECIATION LUNCHEON

OCTOBER 4

SAVE THE DATE

The Greater Burlington Partnership invites you to the annual Manufacturers Appreciation Luncheon, celebrating the vital role of manufacturing in the Greater Burlington community. This event features a keynote presentation, vendor booths, and the announcement of the 2024 Manufacturer of the Year award.

This award is given to a manufacturer in the Greater Burlington area that excels in innovation, employee development, community involvement, and company growth. Attendees will enjoy lunch and have the opportunity to connect with industry leaders.

Attendance is free for Chamber members, but RSVP is required by September 25. Register by scanning the QR code, visiting GreaterBurlington.com/Register, or contact Mac Holford at mholford@greaterburlington.com.



CHAMBER AMBASSADORS | SPOTLIGHT



RACHEL BENDA
CULTURE AND BRAND SPECIALIST
CONNECTION BANK

Rachel and her husband Adam returned to Southeast Iowa over 18 years ago after completing their military service in Texas, eager to raise their family where they grew up. They knew they wanted to raise their children in Southeast Iowa because it's the best place to live and work. Immediately after Rachel joined Connection Bank, she also became a Chamber Ambassador and hit the ground running. She thrives on forging new connections, discovering new businesses, and helping them celebrate their successes! Connection Bank has proudly served Burlington since its inception and remains committed to enhancing the local economy and community spirit. Rachel's enthusiasm and commitment make her a valuable asset to the Chamber Ambassadors and a cherished member of the Burlington community.

Discover Fabulous **PORTUGAL**

With the Greater Burlington Partnership

Discover breathtaking cityscapes, world-famous cuisine, beautiful beaches, and legendary attractions with this small-group tour of Portugal!



Discover the beauty and magic of Southwestern Europe with this 8-day small-group tour of Portugal! This breathtaking country is famous for its intertwining cobblestone streets, captivating coastal villages, world-class wines, golden beaches, and delicious cuisine. Begin your journey in Lisbon, known for its extraordinary mix of architectural styles and famous landmarks. Discover the Monastery of Jeronimos, a 16th century World Heritage Site, and explore Belem, where you may try a traditional Pastel de Nata. From there you will travel to Obidos, a medieval walled city in the north, home to a breathtaking hilltop castle and narrow cobblestone streets. Wander through the fishing village of Nazare and visit the Monastery of

Santa Maria in Batalha. Arrive in Coimbra, home to the magnificent Mondego River and the oldest university in Portugal. Explore Aveiro, dubbed the Venice of Portugal thanks to its picturesque canals, and travel to Porto, a breathtaking coastal city situated on the Douro River and one of the top tourist attractions in Europe! Here you will be able to sample sumptuous foods and drinks as you take in the stunning scenery along the river before you visit the Sanctuary of Our Lady of Fatima, one of the most important pilgrimage sites known to Christianity, where the Virgin Mary is believed to have appeared in 1917. From there you will make your way back to Lisbon to end your tour of Portugal filled with unforgettable memories!

TOUR PRICES:

Departure Dates From
CHICAGO Single Supplement
May 7, 2025
\$2,849 - per person
(based on double occupancy,
\$799 - additional if single room)

TOUR LODGING INFO:

7 Nights accommodation on
double occupancy basis + 1 Night
onboard the flight

HOTELS:

Lisbon 2 Nights Hotel Smy Lisbon
Fatima 1 Night Hotel Santa Maria
Porto 2 Nights Hotel Black Tulip

Contact Dustin Roth, droth@greaterburlington.com, for more information or scan the QR Code.





Delectable dining
 options to try in 2025 are yours. You can enjoy the best in Greater Burlington after enjoying a day of family fun at Burlington Zoo, or taking the walk of excitement at Carlin's Band Zoo, or on the historic Sports Bar & Grill, and so much more for your next adventure. Looking for an unforgettable dining experience with options to savor? Head up to Martin's Cafe, where every dish comes with a stunning view of the Mississippi River. For those seeking the southeast area shops that line downtown Burlington, the only challenge will be choosing from one of over twenty systems and products, including specialty shops at Capitol Recreation + Lounge, your favorite German fare at The Busted Cup, and more. For families looking for a special treat, visit Jerry's Main Lunch. If your Greater Burlington adventure takes you away from downtown, have no fear - The Boulevard Bar & Grill is just Burlington offers all of your Midwestern favorites, and Queen's Tavern Bar & Grill is sure to be a favorite for anyone in need.

must SEE
Jerry's Main Lunch
 Roll up to a spot and stop back in time for the classic American diner experience that is Jerry's Main Lunch.

FOLLOW YOUR Taste Buds
 Find out why Greater Burlington is the foodie capital of Southeast Iowa!

Queen's Tavern Bar & Grill

Martin's Cafe

Boogaloo Sports Bar & Grill

GREATER BURLINGTON is the perfect destination for families!

No matter the size of the brood or range of ages, families can easily fill a weekend full of fun and make memories that will last a lifetime!

For days full of fun and entertainment, look no further than FunCity Resort. Thousands of families each year enjoy bowling, go-karts, laser tag, obstacle courses, a waterpark and arcade, with multiple hotel and dining options, all located under one roof.

FunCity Resort

KingPins Bowling Alley

Showcase Your Business in 2025

The inaugural Visit Greater Burlington tourism guide was runner-up for the state tourism office's Marketing Publication of the Year award in 2024. With the 2nd edition, set to arrive in January 2025, the Convention & Visitors Bureau will continue to showcase the Greater Burlington area as a premier tourism destination, with engaging content and itineraries to entice future travelers from every demographic.

Don't miss out on the opportunity to advertise your business in the publication seen by thousands of potential visitors from the around the Midwest and across the country.

For information on how you can benefit from this unique marketing opportunity, contact Melissa Jones at mjones@greaterburlington.com or by calling 319-208-0052.

FAMILY Fun

Huck's Harbor

GET Outdoors

GREATER BURLINGTON is the ideal destination for outdoor enthusiasts all year round!

Mississippi River

Spring & Summer

Greater Burlington offers miles of inviting trails for hiking and biking, including Hunt Woods, Star's Cave Park & Preserve, and the First State Trail. For even more scenic outdoor fun, enjoy canoeing and kayaking at Big Millie Recreation Area and the accessible boat ramps at Capitol State Park.

Feeling sporty? Pack your clubs and take on one of Greater Burlington's three golf courses, including Spirit Hollow, the 18 public course in town. If you favor golf of the discerning, Carlowitz offers a challenging course surrounded by stunning scenery. With the Highways Mississippi River as its front door, Greater Burlington offers days of spring and summer fun for boating and fishing enthusiasts.

Wildlife Lakes Elk Farm

Wildlife Lakes Elk Farm is a must-visit destination in town. Visitors can enjoy trout-panoramas and Court Campbell guests from winter thru autumn, and of course its remarkable elk all year round.

must SEE

JEFFERSON STREET FARMERS MARKET

Every Thursday
 May - September, 4:30 - 7 PM
 (September 5, 12, 19, 26)



SCAN ME



SEPTEMBER Premier Sponsor:



Visitors and the community are invited to experience the wonders of freshly harvested fruits and vegetables, all while supporting local farmers who bring their best offerings to the market. The market promises an array of vibrant, seasonal produce that showcases the bounty of the region.

In addition to the fresh produce, attendees can enjoy a lively atmosphere filled with the sounds of local musicians, the aroma of freshly baked goods, and the opportunity to connect with the community. The Jefferson Street Farmers Market is more than just a place to shop—it's a celebration of local agriculture and a testament to the joys of supporting local entrepreneurs.

SEPTEMBER Live Music Line Up:

- September 5 - Live Music from Diane DeJaynes
- September 12 - Live Music from Jared Rouggy
- September 19 - Live Music from John Heasley
 Free Horse Rides & Trolley Rides
 Kids Market
- September 26 - Live Music from Diane DeJaynes



DOWNTOWN BURLINGTON

WITCHES NIGHT OUT
 SAVE THE DATE | OCTOBER 18, 5 - 8 PM

PREMIER SPONSOR:



ENTERTAINMENT SPONSOR:



DPICALLING FOR
 BOARD OF DIRECTOR
 NOMINATIONS

The Board of Directors for Downtown Partners, Inc. is looking for candidates who are interested in establishing the direction and policies of the organization. The nominating committee seeks candidates with a variety of perspectives who will serve from January 1, 2025 to December 31, 2027. Interested individuals are encouraged to contact Amy Moyner, Downtown Partners, Inc., amoyner@greaterburlington.com for more information.

Downtown Partners, Inc. is a volunteer-driven Main Street Program established to preserve and revitalize downtown Burlington while improving the quality of life for the community.

Greater Burlington RESTAURANT WEEK SEPT. 12-22 2024

Sponsored by Titan Broadcasting & Digital Group



The eighth Annual Greater Burlington Restaurant Week will be held September 12-22, organized by Titan Broadcasting & Digital Group, The New Mix 107.3, KGRS, and 101.7 The Bull, KBKB, and sponsored by the Greater Burlington Partnership.

During Restaurant Week area residents are encouraged to support local restaurants by dining out or taking out daily at one of the participating restaurants then voting for their favorites in Greater Burlington.

Diners will enjoy options at fixed price points of \$10, \$15, or \$30 in addition to specialty desserts and drinks. Many area restaurants are planning limited-time offerings created especially for Restaurant Week, whereas others offer existing favorites at discounted pricing. Be sure to check out GreaterBurlingtonRestaurantWeek.com for all deals.

After eating or picking up takeout at a participating restaurant, diners are invited to

log on to GreaterBurlingtonRestaurantWeek.com to vote for their favorites. Once a person votes, they will be entered to win a prize package containing a \$25 gift certificate to every participating restaurant.

As a benefit of membership, participating Chamber of Commerce members will have specialty menus produced and printed by the Greater Burlington Partnership. In addition, winning restaurants will receive an enhanced listing in the 2025 Community Guide showcasing the business as a Restaurant Week winner.

The following are Chamber of Commerce member businesses that are participating: Corked 101, DAME Fine Coffee, Jerry's Main Lunch, La Boheme, Mississippi Moon Ice Cream Parlor/Black Water Mini Golf, The Beancounter Coffeehouse & Drinkery, The Outpost Bar & Grill, Dunn Brothers Coffee, Queso's Mexican Bar & Grill, Pizza Ranch, The Broadway Bar & Grill and Sweet Treats, The Busted Cup Brewhouse, Wingstop, Billy Sims BBQ

For a complete list of participating locations and restaurant week menus, visit GreaterBurlingtonRestaurantWeek.com.

PARTNERSHIP CALLING FOR BOARD OF DIRECTOR NOMINATIONS

The Boards of Directors for the Chamber of Commerce, Economic Development and Downtown Partners are looking for candidates who are interested in establishing the direction and policies for the organization. The nominating committees seek candidates with a variety of perspectives who will serve from January 1, 2025, to December 31, 2027. Interested individuals are encouraged to contact the Partnership for more information.



BUSINESS after HOURS

Original Cyn's / CSky Boutique
520 Jefferson St, Burlington | September 12, 5 - 7 PM

Join Chamber of Commerce member businesses to build your network at Business After Hours and grow your business!



Teachers Appreciation Reception

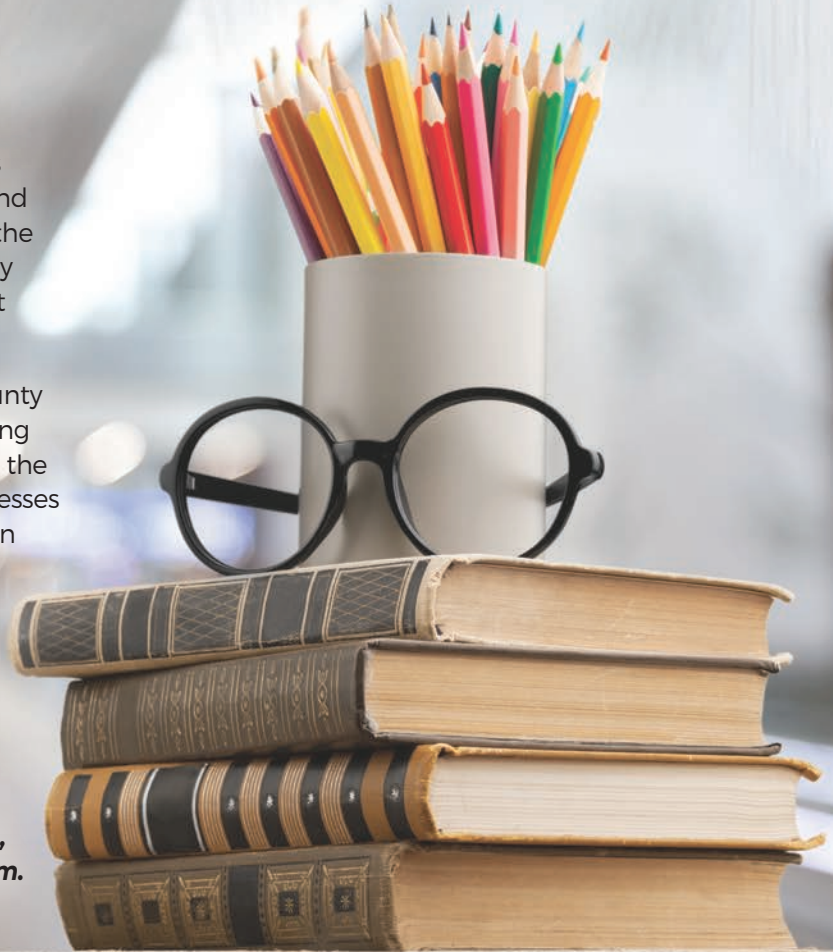
November 1 | At Southeastern Community College's Blackhawk Recreation Center

The 2024 Teachers Appreciation Reception is set for November 1, from 7:30 – 9:30 AM at Southeastern Community College's Blackhawk Recreation Center. This highly anticipated event is a cornerstone for educators and businesses throughout Des Moines County. Building on the success of last year's expo-style format, which drew nearly 300 attendees, this year's reception is expected to attract nearly 500 educators.

The reception is organized as part of the Des Moines County educators' shared professional development day, providing a unique platform for businesses to engage directly with the education community. It's a prime opportunity for businesses in Greater Burlington to showcase career pathways within their companies and organizations, fostering valuable connections that benefit both educators and students.

Booth sponsorships are available, offering businesses a chance to highlight their contributions to local education and career development initiatives.

To reserve your booth, contact Melissa Jones at mjones@greaterburlington.com, or for more information, reach out to Teli Fedele at tfedele@greaterburlington.com.



PREMIER SPONSOR



PLATINUM SPONSOR



PLATINUM SPONSOR



RIBBON CUTTINGS & CELEBRATORY EVENTS



BIG RIVER POPCORN & TREATS GRAND OPENING



THE BUSTED CUP VOLLEYBALL & BOCCIE BALL COURT REMODEL/NEW SPACE



BOARD & BRUSH BURLINGTON GRAND OPENING

2024 MARKETING & SPONSORSHIP OPPORTUNITIES

Downtown Holiday Open House Premier Sponsor - November 10

This is your chance to be the premier sponsor and showcase everything the holidays have to offer during this fabulous Downtown shopping experience. Cost: \$600

Holiday Business Showcase - November 14

Premier Sponsor (\$750); Booth Bingo Sponsor (\$500); and Booth Sponsors (\$250); are still available for this event that kicks off the holiday season with a unique twist on Business After Hours.

Living Windows Premier Sponsor - December 5

Downtown storefronts come alive during this annual celebration which is a favorite event for many. It's a great opportunity to showcase your business while viewers are entertained and get some holiday shopping done. Cost: \$1750

MARKET YOUR BUSINESS THIS HOLIDAY SEASON

Contact Melissa Jones,
mjones@greaterburlington.com,
 with questions or interest.



General Contractor CONSTRUCTION

- Design
- Engineering
- Construction

2204 West Mt. Pleasant Street
 West Burlington, IA 52655
 319-752-7154
ron@sgconstructco.com
www.sgconstructco.com

Port of Burlington Welcome Center

BROCHURES GIFTS INFORMATION SOUVENIRS

Visit online store at GreaterBurlington.com/ShopWC
 400 N Front St, Burlington | 319-752-8731



- ◆ Tax Planning & Preparation
- ◆ Accounting & Bookkeeping
- ◆ Full-Service Payroll
- ◆ Controllership Services
- ◆ Audit & Review
- ◆ Business Consulting

320 N. Third, Ste 300, Burlington, IA 52601
 319-753-2000 • Menkeco.com

FIRE AND WATER CLEAN UP & RESTORATION

24 HOUR EMERGENCY SERVICE

COMMERCIAL OR RESIDENTIAL
 COMPLETE MOVE-OUTS
 MOLD MITIGATION & REMEDIATION
 TRAINED, UNIFORMED PROFESSIONALS

SERVPRO OF BURLINGTON

319-754-8050 OR 877-754-8050
WWW.SERVPROBURLINGTON.COM



Member BUSINESS BRIEF CASE

Do you have something special to announce? A work anniversary, a retirement, a special award or recognition, a conference attended, a sales record, a name change, a new location? We would love to share this with our membership. Please contact Brenda Levitt.

Join Us at the Tri-State Development Summit in Burlington!



We are thrilled to announce that Burlington will be the proud host of this year's Tri-State Development Summit, presented by The Moorman Foundation! This two-day conference, set for October 2 - 3, 2024, at the Catfish Bend Convention & Event Center,

is a unique opportunity for regional stakeholders to come together and collaborate on the future of our communities.

The Summit offers engaging break-out sessions, valuable networking events, and critical insights into the economic development priorities that our task forces and community members are championing. Whether you're a local leader, business owner, or community advocate, this event is your chance to be part of the conversation that shapes our region's growth and prosperity. Don't miss out on this exceptional opportunity—register today and be a part of something truly impactful!

For more details and to secure your spot, visit our registration page: Culver.edu/tsd/meetings-and-events. Let's work together to drive our region forward!

Jeff Potter brings almost 35 years in construction to new role with Carl A. Nelson & Company

Jeff Potter joins Carl A. Nelson & Company (CANCO) as a project superintendent. Jeff is looking forward to leading projects while getting the opportunity to be closer to home. Employee-ownership of the company and CANCO's 111 year longevity were also appealing factors.

Jeff began his career in high school, when his construction trades class built a home in the upscale Galena Territories. That was followed by two years at Morrison (Illinois) Institute of Technology, where he earned an associate of science degree in Drafting Design with CAD.

Right out of school, he went to work for a heavy equipment-manufacturing company, but soon after went to work and spent most of the 1990s overseas, building and installing equipment in glass factories for half the year. The other half, he worked with his brother-in-law building homes and garages.

Later construction jobs had him traveling the United States, remodeling big-box retail stores, and building office, entertainment and warehouse buildings.

DOWNTOWN PARTNERS, INC. FUNDRAISER Campaign

The new Streetscape project means new Downtown décor is needed. All donations will be going towards new holiday decorations. The first 100 Investors who donate at least \$100 will receive two (2) V.I.P. second-story indoor seats at the 2024 Lighted Holiday Parade on November 30, 2024 as a special donor THANK YOU from Downtown Partners, Inc.

Downtown Partners, Inc. is a volunteer-driven Main Street Program established to preserve and revitalize Downtown Burlington while improving the quality of life for the community. Main Streets are a proven economic driver for communities and play a vital role in the economy.

The proceeds of this campaign will go towards new holiday decorations in the Downtown!



SEPTEMBER

september

EVENTS

5, 12, 19 & 26 - Jefferson Street Farmers Market
Downtown Burlington, 4:30 - 7 PM
facebook.com/
DowntownBurlingtonIAMarket

5, 9, 19 - Viking Mississippi Docking
Port of Burlington, 9:30 AM
facebook.com/visitburlingtoniowa

6 & 20 - Friday Night Art Hop
Art Center of Burlington, 6 - 7:30 PM
BTownArt.com

6 - Micro Wrestling Federation
Catfish bend Convention & Event Center
8 PM
FunCityResort.com

10 - InspireNext Summit
Catfish Bend Convention & Event Center
12 - 4 PM
GreaterBurlington.com

12 - Business After Hours
Original Cyn's/CSky Boutique, 5 - 7 PM
GreaterBurlington.com

12 - 22 - Greater Burlington Restaurant Week
Area restaurants and eateries
GreaterBurlingtonRestaurantWeek.com

13 - Friends of Community Field Golf Tourney
Flint Hills Golf Course, 12 PM
facebook.com/FriendsOfCommunityField

13 - Sip Taste & Stroll
Downtown Burlington, 4 - 8 PM
facebook.com/DowntownBurlingtonIowa

13 - The Comancheros/Duke Oursler
Capitol Performing Arts Center, 7 PM
LiveAtTheCapitol.com

18 - Burlington Lunchtime Chamber Music Series
First United Methodist Church, 12:45 PM
SEISO.us

18 - Burlington Civic Music:
Heartache Tonight Eagles Tribute
Memorial Auditorium, 7:30 PM
BurlCivicMusic.com

18, 19, 20, 21 - Burlington Heritage Days
Live music on the Riverfront
Burlington Riverfront, times vary
BurlingtonRiverfront.org

20 - Jefferson Street Cruise Night
Downtown Burlington, 5 - 10 PM
facebook.com/DowntownBurlingtonIowa

21 - Great River Bridge Race
Port of Burlington, 9 AM
facebook.com/GreatRiverBridgeRace

28 & 29 - Fall Market
Beckman Heritage Farms
9 AM - 4 PM
BeckmanFarm.com

28 -360 - Fall Haul
34 Raceway, 5 PM
34Raceway.com

28 - Shepherd's Table Free
Community Meal
First Congregational Church, 4:30 PM
FCCBurlington.com

29 - One Night in Memphis
Legacy Theater, Carthage, IL, 7 PM
TheLegacyTheater.com

View more events at
GreaterBurlington.com/Events

STANDARD OF BEVERDALE

WHAT ARE YOU DREAMING OF? LET US HELP YOU BUILD IT.



- ROOFING
- FENCING
- MATERIALS
- PLUMBING
- WINDOWS
- HARDWARE
- DOORS
- ELECTRICAL
- SIDING
- APPLIANCES

WE SUPPLY THE BEST PRODUCTS TO HELP YOU BUILD THE HOME OF YOUR DREAMS

WE CARRY YOUR FAVORITE BRANDS

Now including
the largest
selection of
Carhartt in
Southeast
Iowa



carhartt®

FOLLOW US ON 319-754-5174

STANDARD OF BEVERDALE

11194 TWIN PONDS DRIVE
WEST BURLINGTON, IA 52655

Owned by the members we serve.

Access Energy Cooperative
A Touchstone Energy Cooperative

www.accessenergycoop.com
Photo by Diane Kruse

SILGAN CONTAINERS
BEST IN CLASS

2019 MANUFACTURER OF THE YEAR

3725 Division St, Burlington, IA 52601
319-208-0610 | SilganContainers.com

RE/MAX
REAL ESTATE SPECIALISTS, INC.

LOCALLY OWNED
NATIONALLY KNOWN

SOLD
FOR SALE

Find us on

123 Broadway St, West Burlington, IA 52655
BurlingtonIowaHomes.com • 319-752-8888
Each office is independently owned and operated

Big River Resources
Highway 34 & Beverdale Rd
West Burlington
Phone: 319-753-1100

BigRiverResources.com

ETHANOL

Proudly Made In The U.S.A.

CLEANER BURNING FUEL
GOOD FOR YOU.
GOOD FOR THE ENVIRONMENT.

BURLINGTON HERITAGE DAYS

SEPTEMBER 18, 19, 20, 21 | THE AUDITORIUM ON THE RIVERFRONT

18 - Heartache Tonight

7:30 PM - 9:30 PM

United States Kick off Heritage Days 2024 with Heartache Tonight presented by Burlington Civic Music! \$35 admission.

19 - Eric Pettit Lion

6:00 PM - 8:30 PM

United States FREE ADMISSION! Night two of Heritage Days 2024 presented by the Capitol Theater!

20 - Friday Fest at Heritage Days

6 PM - 11:30 PM United States FREE ADMISSION!

Farmer's Savings Bank presents Friday Fest at Heritage Days! Featuring Ghost of Judas and Revel in Red.

21 - Libido Funk Circus with Stars in Toledo

6 PM - 11:30 PM

United States FREE ADMISSION! Finish of Heritage Days 2024 with more free live music!

BECKMAN HERITAGE FARMS - FALL MARKET

SEPTEMBER 28, 29 | THE AUDITORIUM ON THE RIVERFRONT

Kick off the fall season with over 75 vendors, family activities, corn maze, food trucks, live music and more at the 4th Annual Fall Market at Beckman Heritage Farms!

Purchase pumpkins, gourds, mums and unique fall décor to help make your home or business fall festive, and don't miss the barn and nature tours on 380 acres of breathtaking beauty.

This event is fun for the whole family!

For more information, visit: BeckmanFarm.com

VIKING RIVER CRUISES - DOCKINGS

SEPTEMBER 5 | 8 AM - 5 PM | BURLINGTON RIVERFRONT

SEPTEMBER 9 | 9:30 AM - 4:30 PM | BURLINGTON RIVERFRONT

SEPTEMBER 19 | 8 AM - 5 PM | BURLINGTON RIVERFRONT

GREAT RIVER BRIDGE RACE

SEPTEMBER 21 | 8 AM - 2 PM

The Great River Bridge Race is more than just a race - it's an experience!

Join the elite 2,267-Foot Club and be one of the few people who can say they've crossed the GRB on foot! Not only will you have an amazing time at this popular community event, you'll be making a lasting impact on Greater Burlington - all proceeds from the race benefit Burlington Parks and Recreation, and this year's proceeds will benefit the new Dankwardt Park playground project.

Competitive runners can register for the 5- or 10K races, which begin at 9 AM. If you aren't looking for the intense race atmosphere but still want the experience, you can register for the the Bridge Walk, which begins at 9:45 AM.

Make sure to register now to get your Great River Bridge race T-shirt, included with your registration fee ONLY until August 30.

For more information or to register for the Great River Bridge race, visit: RunSignUp.com

ONE NIGHT IN MEMPHIS

SEPTEMBER 29 | 7 - 10 PM | THE LEGACY THEATER

One Night in Memphis is both a tribute to and a recreation of that incredible night in 1956 when Elvis Presley, Carl Perkins, Johnny Cash and Jerry Lee Lewis took part in an impromptu "jam session" at Sun Studios in Memphis, TN.

This amazing show is selling out venues around the country - don't miss your chance to sit in on one of rock & roll history's most famous recording sessions!

Tickets are \$55, online and at the Legacy box office.

For more information, follow The Legacy Theater on Facebook or visit: TheLegacyTheater.com



MEMBER SPOTLIGHT

Submit member information, to Brenda Levitt at blevitt@greaterburlington.com

ADDINGTON PLACE
OF BURLINGTON
Assisted Living & Memory Care



(319) 752-0260

www.AddingtonPlaceofBurlington.com

5175 West Ave., Burlington, IA

BECKER'S
JEWELERS
*For moments that matter
this holiday season!*



FULL SERVICE JEWELERS
www.beckerdiamonds.com

Want to See
Your AD Here



Contact: Melissa Jones
mjones@greaterburlington.com

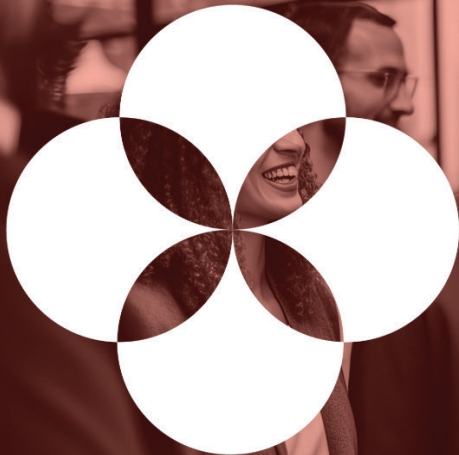


319-752-2043

KENNYSROLLERRANCH.COM

8989 Koestner Avenue | Burlington, IA 52601

Keynote Sponsor:



InspireNext SUMMIT

Inspiring the
Next Generation

REGISTRATION IS OPEN FOR THE INSPIRENEXT SUMMIT

Date: September 10, 2024 | Time: 12 - 4 PM | Location: Catfish Bend Convention & Event Center

Elevate your career or empower your team at the InspireNext Summit on September 10 at the InspireNext Summit. Featuring keynote speaker Chris Lee, an expert in organizational culture, this event offers valuable networking opportunities, interactive activities, and a complimentary lunch. Whether you're attending to boost your own professional growth or sending your staff to inspire and connect, this summit is designed to motivate and elevate. Register at Greaterburlington.com/inspirenext.



**Your Trusted
Financial Partner**

Let us help you reach your financial goals.

tworivers.bank | 888-226-6063



Chamber of Commerce
 Economic Development
 Convention & Visitors Bureau
 Downtown Partners, Inc.

Follow The Partnership




Proud to Be
Your Community Bank
 Since 1916

F&M BANK & TRUST
 fmbanktrust.bank

Member FDIC