

November 2025



THE PARTNERSHIP

GREATER BURLINGTON PARTNERSHIP NEWSLETTER - VOL. 105 NO. 11



President & CEO's Letter



Dear Members and Friends,

As the holiday season approaches, the Greater Burlington Partnership encourages everyone to celebrate the spirit of the season by shopping local. Every purchase made in our community helps strengthen the local economy, support small business owners, and preserve the unique character that makes Greater Burlington such a special place.

When you choose to shop local, you're doing more than finding the perfect gift, you are investing in your neighbors, your downtown, and the future of our region. The dollars spent locally circulate through our community, supporting jobs, funding local services, and ensuring that our

small businesses continue to thrive year-round.

To make shopping local easier, visit our website www.greaterburlington.com. To the right of our logo, select "Member Directory," then in the search bar, where it asks, "What are you looking for?," simply type "Gifts." A list of our local Chamber member businesses will generate, complete with links to their websites and contact information. It is the perfect place to start your holiday shopping list!

Small Business Saturday is November 29th. Please join the national movement to shop locally and support the businesses owned by our neighbors, employ our family members, sponsor our local teams, and school events. Whether you're exploring boutiques, restaurants, or specialty stores, your purchases make a significant impact right here at home.

To kick off the season, Downtown Burlington will host an open house on November 9. The streets will be filled with holiday cheer as merchants open their doors with special promotions, treats, and décor to welcome early shoppers. As we step into December, you won't want to miss our Living Windows event. It's one of Burlington's most cherished traditions as downtown windows come alive with holiday scenes and live performances. There will be carriage rides, music, and family fun while exploring our beautifully decorated downtown district.

At the Greater Burlington Partnership, we remain focused on strengthening the local economy, promoting tourism, developing leaders, and creating a vibrant, welcoming community. The holiday season offers a wonderful reminder of how vital our small businesses are to our mission, and how each of us can play a part in their continued success.

This year, make the conscious choice to shop local, dine local, and give local. Together, we can keep the spirit of the season and our community strong.

Warm regards,

President & CEO
Greater Burlington Partnership

Partnership Staff



Amy O'Brien
President & CEO
319-208-0043
aobrien@greaterburlington.com



Melissa Jones
Chamber of Commerce
Exec. Dir. 319-208-0052
mjones@greaterburlington.com



Amy Moyner
Downtown Partners, Inc.
Exec. Dir. 319-208-0056
amoyner@greaterburlington.com



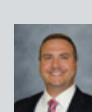
Chris Gram
Convention & Visitors Bureau
Exec. Dir. 319-208-0045
cgram@greaterburlington.com



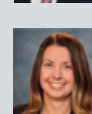
Taylor Collins
Economic Development
Exec. Dir. 319-208-0050
tcollins@greaterburlington.com



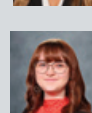
Crystal Jolin
Director of Finance
319-208-0044
cjolin@greaterburlington.com



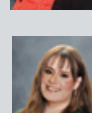
Dustin Roth
Marketing & Communications
Dir. 319-208-0048
droth@greaterburlington.com



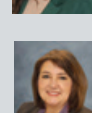
Telisha Van Rycke
Regional Director of
Workforce Innovation
319-208-0046
tvanrycke@greaterburlington.com



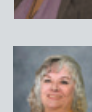
Kaylea Felland
Convention & Visitors Bureau
Prog. Coord. 319-752-8731
kfelland@greaterburlington.com



Mac Holford
Events Manager
319-208-0040
mholford@greaterburlington.com



Brenda Levitt
Graphic Designer
319-208-0047
blevitt@greaterburlington.com



Pam Wright
Office Manager
319-208-0042
frontdesk@greaterburlington.com

SUBSCRIPTIONS: Price is \$24, which is included in annual events fees. Non-members: \$4 per issue. Periodicals postage paid at Burlington, Iowa.
POSTMASTER: The Partnership is published monthly by the Greater Burlington Partnership 610 North 4th Street, Suite 200, Burlington, Iowa 52601.
POSTMASTER: Send address changes to Greater Burlington Partnership (USPS 001-692) 610 North 4th Street, Suite 200, Burlington, Iowa 52601.



ON THE COVER

HOLIDAYS IN DOWNTOWN BURLINGTON

The cover photo captures a cherished moment from Living Windows: Terry Johnson constructing a gingerbread house with her niece, a holiday tradition that has become a symbol of Downtown Burlington's magic.

Every year, our windows come alive with light, laughter, and imagination, reminding us that the holidays are about creating memories with the ones we love. From the Holiday Open House, the Lighted Parade, and Small Business Saturday, to Santa in his Cottage, festive music, and the glow of the tree lighting, Downtown truly shines as the heart of the season. Make memories here... because Downtown Burlington is where It's Happening and the holidays come to life.

It's Happening

Greater Burlington RESTAURANT WEEK SEPT. 11-21 2025

Sponsored by Titan Broadcasting & Digital Group



SPOTLIGHT ON THE 2025 GREATER BURLINGTON RESTAURANT WEEKENERS

Greater Burlington diners cast their votes and celebrated local flavor across five standout categories.

The results are in, and the Greater Burlington community has spoken: the 2025 Restaurant Week was a delicious success. This year's event highlighted the diversity and creativity of local dining options, and five Chamber Member restaurants earned top honors across key categories.

Greater Burlington Restaurant Week is a promotional event held every September to showcase all the culinary offerings our area has to offer. This year's event ran from September 11 to September 21, inviting diners to explore local eateries through exclusive specials, signature dishes and creative menu offerings designed specifically for the event.

With 20 participating restaurants representing a wide range of cuisines and styles, Restaurant Week brought together longtime favorites and exciting new establishments under one promotional umbrella.

Diners were encouraged to vote for their favorites in five fun categories, and the competition was as flavorful as it was fierce.

The winners of the 2025 Restaurant Week are:

- Best Beverage – The Beancounter Coffeehouse & Drinkery
- Best Culinary Creativity – Martini's Grille
- Best Pork Dish – Billy Sims Barbecue
- Best Service – Fat & Sassy Barbeque
- Best Value – The Outpost Bar & Grill

These award-winning businesses stood out in a crowded field, but the celebration extends to all who participated. The Chamber also recognizes the efforts of fellow member establishments who contributed to the success of this year's event. Additional participating Chamber Member restaurants included:

Boogaloo Sports Bar & Grill, The Busted Cup Brewhouse, The Broadway Bar & Grill, Corked 101, La Boheme, Mississippi Moon Ice Cream Parlor, Wake N Bake Breakfast Company and Wing Stop.

Restaurant Week continues to grow each year, thanks to strong community support, active participation from Chamber members, and the dedication of local restaurant owners and teams. It's a week that not only celebrates what makes our culinary scene special, but also reminds us of the vital role these businesses play in the local economy and community culture.

Support these local favorites all year long. Find more information at GreaterBurlington.com.

#GBPety Is Back for Holiday Mischief

Join the festive fun from November 29 through December 19 on Facebook for clues, riddles and elf-sized surprises

From November 29 through December 19, I'll be sneaking around town and popping into some of my favorite Greater Burlington businesses, but I won't make it too easy for you. Each day, I'll leave a riddle on the Greater Burlington Partnership's Facebook page to give you a hint about where I've been. Think you've solved it? Comment your guess under the riddle post and you'll be entered into a prize drawing.

Want an extra entry? Here's the twist: I'm feeling especially sneaky this year, so instead of snapping a pic of me, I want you to come find the note I leave behind at each location. Take a fun "Elfie" with the note and post it under that day's riddle on Facebook. The more you play the more chances you have to win. I've got some tricks up my striped sleeves so get ready for a merry scavenger hunt that supports local businesses, spreads holiday cheer, and brings out your inner elf detective.

Now if you'll excuse me, I've got to finish planning my hiding spots. See you soon, if you can find me.

Yours in Mischief, *#GBPety*





Learn more at
Revitalize Roosevelt



HIGHWAY 61 COALITION

The Greater Burlington Partnership, in collaboration with the Highway 61 Coalition, Des Moines County, the City of Burlington, and the City of West Burlington have begun a collective partnership to develop, revitalize, and reconfigure the Roosevelt Corridor of Highway 61 through Burlington. To achieve this effort, Grow Greater Burlington, the economic development division of the Greater Burlington Partnership, has hired the civil and structural engineering firm, Snyder & Associates, to guide the coalition with the mission of presenting a plan to Iowa's Transportation Commission. Last month, our first

public input session was held to collect public input from the community and hear what they would like to see in a reimagined corridor. Currently, Snyder & Associates is in the process of developing three different potential plans which will be presented at a second public input session scheduled for Wednesday, November 12 from 5:30 – 7 PM at the Greater Burlington Partnership. After feedback at this second meeting, a consensus plan will be presented to the coalition for approval before being presented to the DOT commission.



WALD FAMILY FOODS OPENS BURLINGTON PLANT

Wald Family Foods, a food manufacturer based in Grand Island, Nebraska, is gearing up for the opening of their Burlington plant in the former Aldi distribution center after investing over \$20 Million in the facility. With a goal of employing over 50 associates by next summer, and over 100 by the end of 2026, Wald is currently accepting applications at their facility on Mount Pleasant Street in the upstairs lobby.

This expansion, part of the company's portfolio under TOBA Inc., strengthens its capacity to produce private-label, gluten-free specialty foods. On behalf of the Greater Burlington Partnership, thank you to Wald Family Foods for choosing Southeast Iowa, and expanding Greater Burlington's strong food manufacturing sector!



DOWNTOWN PARTNERS, INC. LAUNCHES FUNDRAISER FOR ART INSTALLATIONS

Downtown Partners, Inc. (DPI) is excited to announce a new Fundraiser Campaign aimed at bringing even more life, art, and community to the heart of Burlington. This initiative will focus on activating alleyways, installing additional public art, and creating social gathering spaces designed to foster a true neighborhood vibe. With more seating areas, creative installations, and inviting décor, Downtown Burlington will continue to evolve as a welcoming place to gather, connect, and enjoy.

To make the campaign both fun and rewarding, DPI is offering a special thank-you for early investors. The first 25 donors contributing \$200 or more will receive two (2) V.I.P. second-story indoor seats at The Busted Cup Brewhouse during the 2025 Lighted Holiday Parade on November 29, 2025. This exclusive V.I.P. experience includes four complimentary drinks, appetizers, and a warm, dry spot to enjoy one of Burlington's most cherished holiday traditions.

HOW TO SUPPORT - For more information on how to give, visit the Downtown Burlington Iowa Facebook page, contact Amy Moyner at 319-208-0056 or amoyner@greaterburlington.com.

THANK YOU TO THE BUSTED CUP BREWHOUSE
SPONSOR OF THE V.I.P. SECTION



TALENT DEVELOPMENT UPDATE: COLORING BOOKS!

The Workforce team is excited to share a fun new initiative aimed at inspiring the next generation of talent. Marketing & Communications Director Dustin Roth has created custom coloring books that highlight the many exciting careers available in Greater Burlington. These coloring books will be distributed to all second graders in Des Moines County, encouraging students to start thinking early about future career opportunities right here in their own community.





REASON FOR THE SEASON

This year, the Greater Burlington Partnership is excited to introduce the Reason for the Season Expo, a new celebration dedicated to uplifting the nonprofits that make our community shine. This special event will bring Chamber members and the community together to discover local organizations, learn about ways to give back, and find new opportunities to get involved. More details will be in upcoming newsletters as well as on the Greater Burlington Partnership Facebook page.

If you are a nonprofit looking to have a booth, or a business looking to join the sponsor list to help bring this event to life please contact Chamber Director, Melissa Jones at mjones@greaterburlington.com.

Event Details

November 20, 5 - 7 PM
Catfish Bend Convention & Event Center

What's Happening

- Return of the Chamber Tree of Giving and Community Card Writing Station
- Volunteer pledge drive
- Appetizers, live entertainment, and cash bar

Sponsorship Details

Booth sponsorships allow us to invite our nonprofit members at no cost to them.

Booth Sponsorship, \$200

- Includes signage, sponsor representation at booth
- Sponsors may choose a nonprofit member to support, or we will be happy to pair them with a booth in need of a sponsor

50% of Every Sponsorship Donated

- One participating nonprofit will be drawn during the event to receive the total donated amount.

** The nonprofits and sponsors below have signed up as of the publication this newsletter.*



Sponsored by



Sponsored by



Sponsored by



Sponsored by





Discover
DOWNTOWN

**FOR THE
HOLIDAYS**



DISCOVER THE MAGIC.

DISCOVER COMMUNITY.

DISCOVER DOWNTOWN.



**DOWNTOWN
PARTNERS**
A MAIN STREET IOWA PROGRAM
A DIVISION OF THE GREATER BURLINGTON PARTNERSHIP



*The Place
to be this
Holiday
Season*

HOLIDAY OPEN HOUSE

November 9, 10 AM - 4 PM

Kick off your holiday season with a favorite event - **Downtown Burlington's Holiday Open House** and enter to win \$1,000 in Downtown Dollars to spend in Downtown Businesses!

KIWANIS LIGHTED HOLIDAY PARADE

November 29, 5 PM

Brought to you by Kiwanis, premier sponsor Standard of Beaverdale, and media sponsor Pritchard Broadcasting, the theme is, "New Beginnings, Old Traditions"

Premier Sponsor: *Standard of Beaverdale*

Media Sponsor: *Pritchard Broadcasting*



LIVING WINDOWS

December 4, 5 - 8 PM

This favorite holiday event includes lights, carolers, story readings, crafts, decorations, gingerbread houses, free horse-drawn carriage rides, and much more. And of course, Santa Claus will be on hand at his cottage.

Living Windows includes complimentary food and beverages at many Downtown stores. It's a great opportunity to do some Christmas shopping, see friends and enjoy the holiday season.

Premier Sponsor: *Burlington Riverfront Entertainment*

Trolley Sponsor: *Standard of Beaverdale*

Ice Carving: *F&M Bank & Trust*



A VERY VINTAGE CHRISTMAS MARKET

During Living Windows on the 700 block of Jefferson Street

During Living Windows, stroll to the 700 block of Jefferson for a charming pop-up market featuring baked goodies, festive Christmas décor, and fun giftables from your favorite Jefferson St Farmers Market and A Very Vintage Market vendors. Warm up with mulled wine samples and holiday treats from The Busted Cup, then keep exploring all the downtown magic. Don't miss it... It's Happening!

SANTA'S COTTAGE

Saturdays in December

Premier Sponsor: *Addington Place of Burlington*





LEADER LAB LANCHES THIS MONTH

The Greater Burlington Partnership is excited to kick off the inaugural Leader Lab program on November 6, with the first session focusing on Mission, Culture, and Excellence. Designed for supervisors, managers, business owners, and emerging leaders, Leader Lab is a seven-month professional development program that blends on-demand leadership training from BetterCulture with local cohort discussions. Participants will build practical leadership skills, strengthen their teams, and grow alongside peers who share their drive to lead.

Applications for this year's cohort have closed, but stay tuned for updates as this exciting new program gets underway.



5TH GRADE CAREER FAIR - MARK YOUR CALENDARS!

December 15 at Southeastern Community College, 9 - 11:30 AM

5th graders from across Des Moines County will explore local career options. This event offers a unique opportunity for young learners to discover the diverse career paths available right here in Greater Burlington.

Don't miss this chance to inspire the next generation!

Contact Teli Van Rycke for more information or to be a presenter, tvanrycke@greaterburlington.com



FRIDAY FORUM - Save the Date

Chamber members are invited to participate in our Friday Forums, held monthly at 8 AM in the Winegard Board Room or virtually. These forums feature discussions on important legislative updates and local issues.

2026 Friday Forum Dates:

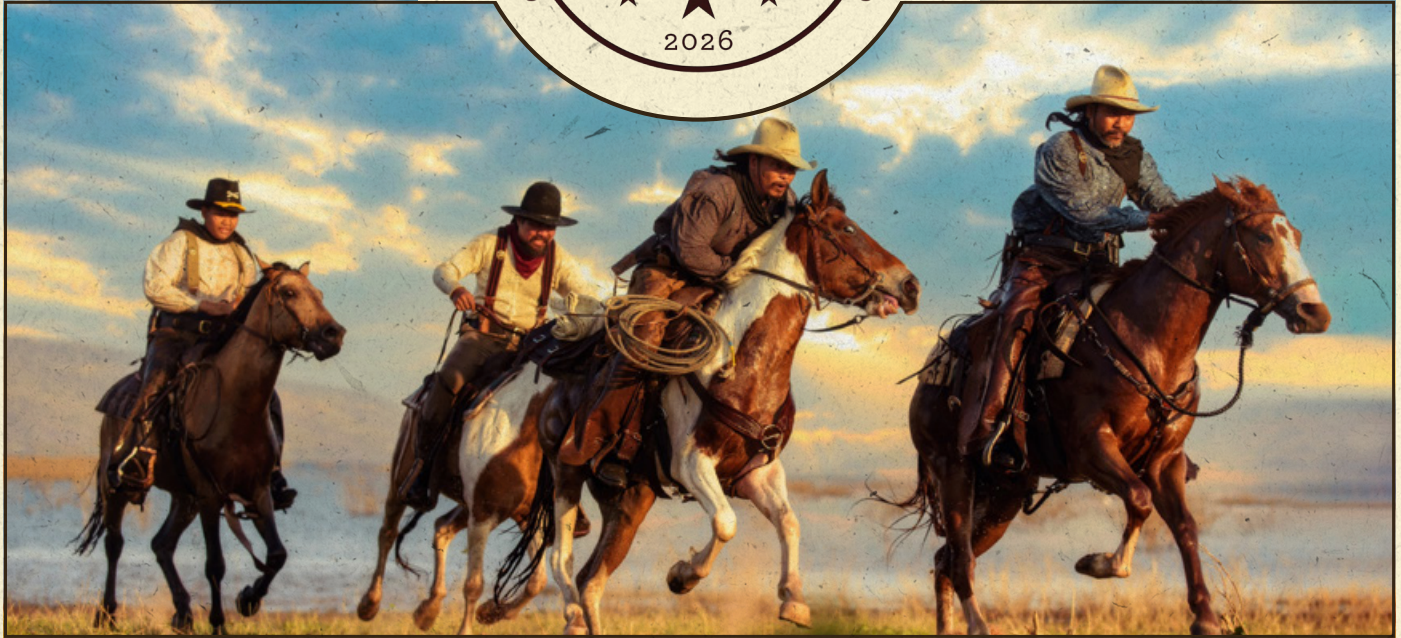
- January 16
- February 13
- March 13

Contact Melissa Jones, mjones@greaterburlington.com, with questions or interest.



ANNUAL DINNER

★ ★ ★
2026



TICKETS AVAILABLE NOW

JAN 23, 2026

The Annual Dinner is the Greater Burlington Partnership's annual gala, gathering a over 500 business and community leaders for an evening of celebration. Guests enjoy a cocktail reception, plated dinner with live entertainment, and the presentation of community awards that honor the people and businesses shaping our region's success.

Each year brings a fresh and exciting theme that sets the tone for décor, entertainment, and attire. The 2026 event will transport guests to an unforgettable evening in the Wild West.

Table of 8: \$850

- Priority Seating, Logo on Table

Half Table: \$425

- Logo on Table

Individual Ticket: \$100

Reserve your seats by contacting Melissa Jones at mjones@greaterburlington.com.

EVENT DETAILS

Additional information, outfit inspiration, and more can be found by scanning the QR code.





GBP & LCEDG HIGHLIGHT REGIONAL WORKFORCE COLLABORATION AT TRI-STATE DEVELOPMENT SUMMIT

On September 25, Greater Burlington Partnership (GBP) and Lee County Economic Development Group (LCEDG) were proud to have members of their regional workforce team present at the Tri-State Development Summit, hosted at Culver-Stockton College in Hannibal, Missouri.

Teli Van Rycke, Regional Director of Workforce Innovation, and Becky Newton, Workforce and Community Specialist at GBP and LCEDG, shared their presentation, “The Future Works Here: Partnering on Workforce Development.” Their session highlighted how the two organizations are working together to create a stronger, more unified approach to workforce challenges across Southeast Iowa.

The presentation focused on early wins from this partnership, including coordinated career exploration

events, streamlined employer engagement, and the creation of a “one-stop” regional workforce team. By combining resources, eliminating duplication, and aligning strategies, GBP and LCEDG are building a model that demonstrates how collaboration can meet talent needs more effectively than working in silos.

Their message resonated with attendees from across Iowa, Illinois, and Missouri, reinforcing the idea that workforce development doesn’t stop at county or state lines. This cross-border strategy is helping strengthen the tri-state talent pipeline, ensuring employers and jobseekers alike benefit from a coordinated, regional approach.

PUBLIC OFFICIALS RECEPTION

Join the Greater Burlington Partnership for the annual Public Officials Reception **December 2 from 5 - 7 PM at the Art Center of Burlington.** This exclusive Chamber event offers members the opportunity to connect with local leaders and legislators. Light appetizers will be served.

To RSVP, contact Melissa Jones at 319-208-0052 or mjones@greaterburlington.com

WESTERN SMOKEHOUSE PARTNERS - 2025 MANUFACTURER OF THE YEAR

The Greater Burlington Partnership has named Western Smokehouse Partners as the 2025 Manufacturer of the Year, recognizing a company that continues to invest in the community through innovation, job creation and long-term growth.

In May 2023, Western Smokehouse opened a 100,000-square-foot jerky production facility in Burlington, converting the former Dresser Rand site into a modern, high-capacity operation. Since then, the company has emerged as a national leader in the better-for-you meat snack industry, producing premium products while supporting local economic growth.

Less than two years after launching its Burlington plant, the company is once again expanding. A planned \$15 to \$18 million project will add 27,000 square feet to the facility, increase production capacity by 30 percent and

create 100 new jobs. Once complete, the Burlington site will employ more than 300 people and process 95,000 pounds of meat daily, up from the current 65,000 pounds.

The expansion brings more than production increases. It creates new opportunities for contractors, employees and families who benefit from the company's growth and its investment in people. By choosing Greater Burlington for its initial facility and for this major expansion, Western Smokehouse has affirmed its confidence in the community's workforce and future.

The Greater Burlington Partnership congratulates Western Smokehouse Partners as the 2025 Manufacturer of the Year and celebrates the company's leadership, vision and ongoing contributions to the region.



SPANISH TREASURES

FROM MADRID TO BARCELONA
with Greater Burlington Partnership

10 DAY TOUR | OCTOBER 2, 2026

Price per person on double occupancy:

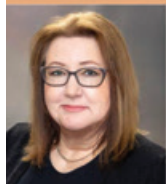
\$3759

Single Person Supplement:

\$1249

CHICAGO • MADRID • CORDOBA • SEVILLA
GRANADA • VALENCIA • BARCELONA • CHICAGO

From Madrid to Barcelona, discover the unique and varied culture of Spain as you travel through the must-see cities!



Join us on this exciting trip!
Brenda Levitt



**GREATER
BURLINGTON
PARTNERSHIP**

To book or inquire, please contact
Mac Holford T: 319-208-0040 | E: mholford@greaterburlington.com

For information and to book, scan the QR Code or find the booking link at: www.greaterburlington.com





Member

BUSINESS BRIEFCASE

Do you have something special to announce? A work anniversary, a retirement, a special award or recognition, a conference attended, a sales record, a name change, a new location? We would love to share this with our membership. Please contact Brenda Levitt.

A Fresh New Look, Same Trusted Team

We're proud to share that Bob Dodds Insurance Agency, Eland Agency and Earnest Agency are coming together under one new name: DSB Insurance Group. Our rebrand reflects our roots in the community and our commitment to serving today's families and businesses. You will see new signage, undated materials, and our continued community involvement.

This change allows us to serve you better by combining

our Agents' broad knowledge with a unified team and streamlined services.

What does this mean for you? Nothing changes with your policies, where you do business, or access to your trusted advisors. You will still work with the same great people, just with a new name and logo.

We appreciate your continued trust, and we are excited to keep serving you.

GIFT IDEAS at the Port of Burlington Welcome Center

'Tis the season... when a friend or loved one might be missing Greater Burlington! If you know someone who might not make it home for the holidays, or if you want to spread a little Greater Burlington cheer this season, be sure to put the Port of Burlington Welcome Center on your list of holiday shopping destinations. A Sterzing's coin purse, a Snake Alley Christmas ornament, local landmark playing cards, or curly slide koozies, and so much more... the Port of Burlington Welcome Center is your home for unique gift ideas!



WELCOME NEW MEMBERS

Please welcome these new Chamber of Commerce members by sending an email, liking their Facebook page or visiting their website. Even better, stop by to introduce yourself, exchange business cards and help grow their network as well as your own!

Morris Earthworks and Land Clearing, LLC **MorrisEarthworksllc.com, 319-371-6412**

Morris Earthworks & Land Clearing, LLC provides comprehensive land management services to improve both the functionality and aesthetics of your property. From vegetation control to drainage solutions, their experienced team delivers quality workmanship and innovative solutions tailored to each project. They are committed to helping create safe, efficient, and beautiful outdoor spaces.

DOWNTOWN PARTNERS, INC. BOARD NOMINATIONS

The Nominating Committee of Downtown Partners, Inc., met and nominated the following persons to serve a term on the Downtown Partners Board of Directors commencing January 2026.

The Slate of Nominees 2026 - 2028:

- Elizabeth Pappas, Director, Art Center of Burlington (SSMID)
- Suann Wells, Owner, The Beancounter Coffeehouse & Drinkery (SSMID)
- Cheryl Plank, Chief Strategic Advancement Officer (SSMID)
- Reverend Carolyn Blair, Pastor, Zion United Church of Christ (SSMID)
- Kansha Tiwari, Senior Planner, SEIRPC (At-Large)

NEW MEMBER LUNCHEON

December 5, 11:45 AM - 1:15 PM

Winegard Room, Greater Burlington Partnership

New members are invited to meet Partnership staff, connect with fellow Chamber members, and discover how to make the most of your Chamber membership. Keep an eye out for your invitation and be sure to RSVP.

Contact Melissa Jones for more information, mjones@greaterburlington.com

NELSON

CARL A. NELSON & CO.


Design-Builder | Construction Manager
General Contractor

**Deliver Value.
Build Trust. Repeat.**

Industrial/Commercial
Construction Services

www.carlnelsonco.com
Burlington, Iowa | 319-754-8415

photo by Kristin Barclay



Owned by the members we serve

1-866-242-4232
www.accessenergycoop.com

WORLD

We help our clients manage and protect their most valuable assets—their people and their business.

**LARGE RESOURCES.
LOCAL RELATIONSHIPS.**

319-753-0144
yourteam@worldinsurance.com

www.worldinsurance.com



RE/MAX
REAL ESTATE SPECIALISTS, INC.

LOCALLY OWNED
NATIONALLY KNOWN



SOLD
FOR SALE

Find us on Facebook   

123 Broadway St, West Burlington, IA 52655
BurlingtonIowaHomes.com • 319-752-8888
Each office is independently owned and operated

RIBBON CUTTINGS & CELEBRATORY EVENTS



DROPPETT, WEST BURLINGTON LOCATION GRAND OPENING



BICKFORD OF BURLINGTON - REMODEL



FIRST CHRISTIAN CHURCH - REMODEL

CHAMBER AMBASSADORS

Spotlight

BRETT BESSINE
WEALTH MANAGEMENT OFFICER
TWO RIVERS BANK & TRUST



As a Greater Burlington native, I'm blessed with the opportunity to live, work, and volunteer in the community I grew up in. A proud graduate of Burlington Notre Dame, Southeastern Community College, and the University of Northern Iowa, I now have the

privilege of serving individuals and businesses across Greater Burlington and beyond as a Wealth Management Officer and Retirement Plan Specialist. With more than 20 years in the industry—and over 15 years at Two Rivers Bank & Trust—I've truly enjoyed partnering with clients to plan for and achieve their financial goals.

Since becoming a Chamber Ambassador in 2011, I've been fortunate to participate in countless ribbon cuttings and Business After Hours events, celebrating local businesses through grand openings, remodels, expansions, and anniversaries. Networking with the people and organizations that make our community thrive is one of the most rewarding parts of being involved with the Chamber. I also take pride in working for a community bank with roots dating back to 1904—an organization that shares my belief in giving back and supporting the place we call home.

In addition to my role at Two Rivers and my involvement with the Chamber, I serve on several local boards and foundations and am an active member of the Burlington Noon Lions Club. When I'm not volunteering, meeting with clients, or helping organizations administer and educate employees about their retirement plans, you'll find me enjoying all that Greater Burlington has to offer with my loved ones. Of all the hats I wear, my favorite is being "Dad" to my daughter.

Reach out to connect and learn more about how we can work together to achieve your financial and retirement goals.

Slate of Nominees for Burlington/West Burlington Area Chamber of Commerce Board of Directors

The Slate of Nominees:

- Aaron Engberg, Carl A. Nelson & Company
- Tabi Dixon, Dixon's Seamless Gutters, LLC
- Brent Hartley, MidWestOne Bank
- Karen Marino, Brueck Construction
- Sara McClure, McClure Materials, Inc

The Nominating Committee of the Burlington/West Burlington Area Chamber of Commerce met and nominated the following persons to serve a term on the Chamber of Commerce Board of Directors commencing January 2026.

In accordance with Article IV, Section 2 of the By-Laws of the Burlington/West Burlington Area Chamber of Commerce, additional names of candidates for directors can be nominated by petition bearing the genuine signatures of least twenty (20) qualified members of the Chamber of Commerce.

NOVEMBER

november

View more events at
GreaterBurlington.com/Events

EVENTS

October 31 & November 1 -
 Haunted Auditorium
 Memorial Auditorium, 7 PM
BurlingtonRiverfront.com

1 - KidSymphony
 Capitol Theater, 4:30 PM
SEISO.us

1 - Night of Dreams Gala
 Catfish Bend Convention & Event Center
 5:30 PM
GreatRiverHealth.org

5 - Historic Newspaper Readings
 Des Moines County Historical Society
 10 - 11 AM
DMCHS.org

5 - Burlington History Club
 Des Moines County Historical Society
 11 AM - 12:30 PM
DMCHS.org

5 - Elmo & Friends Say Hello!
 Memorial Auditorium, 6:30 PM
BurlingtonRiverfront.com

6 - Think Tank Thursday
 Night Cap Listening Lounge, 6 PM
BurlingtonCapitolTheater.com

6 - Comedy Thursday: Michael Palascak
 Memorial Auditorium, 7:30 PM
BurlingtonRiverfront.com

7 - Great Tastes
 Catfish Bend Convention & Event Center
 5:30 PM
SCCIowa.edu

7 and 21 - Friday Night Art Hop
 Art Center of Burlington, 6 PM
BTownArt.com

8 - Moulin Rouge
 La Bohème, 8 PM
Facebook.com/61552960887564

9 - Downtown Holiday Open House
 Downtown Burlington, 10 AM - 4 PM
Facebook.com/downtownburlingtoniowa

9 - Iowa Music Awards
 Memorial Auditorium, 4 PM
BurlingtonRiverfront.com

11 - From Iowa and Back:
 The Vietnam Era
 Capitol Theater, 7 PM
BurlingtonCapitolTheater.com

12 - Coffee & Conversation
 Wake N Bake Breakfast Company
Facebook.com/HWMCL

13 - Lunch at the Top
 First United Church of Christ
 11 AM - 1 PM
FirstuccBurl.org

13 - Art of the Cocktail
 Night Cap Listening Lounge, 6 PM
Facebook.com/nightcaplisteninglounge

14 - Work-Based Learning Workshop
 Greater Burlington Partnership
 9 - 11 AM
Workforce.iowa.gov

14 - Dueling Pianos
 First Christian Church, 6:30 PM
BurlingtonDoc.org

14 - The Crown Jewels:
 A Tribute to Queen
 Capitol Theater, 7:30 PM
BurlingtonCapitolTheater.com

15 - Fall Craft & Vendor Show
 Catfish Bend Convention & Event Center,
 9 AM - 3 PM
FunCityResort.com

16 - Live Spoken Word
 La Bohème, 5 - 8 PM
Facebook.com/61552960887564

16 - Beatles vs. Stones
 Memorial Auditorium, 7:30 PM
BurlingtonRiverfront.com

19 - Burlington Lunchtime Chamber
 Music Series
 First United Methodist Church, 12:15 PM
facebook.com/lingtonLunchtimeChamberMusicSeries

19 - Shepherd's Table
 Free Community Meal
 First Congregational Church, 4:30 PM
FCCBurlington.org

20 - Reason for the Season Expo
 Catfish Bend Convention & Event Center
 5 - 7 PM
GreaterBurlingtonPartnership.com

21 - Burlington Civic Music: David
 Burnham, Broadway & Beyond
 Capitol Theater, 7 PM
burcivicmusic.com

22 - Lewis Knudsen
 Night Cap Listening Lounge, 8 PM
facebook.com/nightcaplisteninglounge

22 - Zachary Freedom
 La Bohème, 8 - 10 PM
facebook.com/61552960887564

27 - Open Mic Comedy Night
 Night Cap Listening Lounge, 7 PM
facebook.com/nightcaplisteninglounge

29 - Kiwanis Lighted Holiday Parade
 Downtown Burlington, 5 PM
facebook.com/downtownburlingtoniowa

29 - Tree Lighting Ceremony
 Memorial Auditorium, 7 PM
burlingtonriverfront.com

29 - Matt Landon
 La Bohème, 8 PM
facebook.com/61552960887564

29 - Small Business Saturday
 Shop Local. Shop Small! #ShopSmall

STANDARD OF BEVERDALE

WHAT ARE YOU
 DREAMING OF? LET US
 HELP YOU BUILD IT.



- ROOFING
- FENCING
- MATERIALS
- PLUMBING
- WINDOWS
- HARDWARE
- DOORS
- ELECTRICAL
- SIDING
- APPLIANCES

WE SUPPLY THE BEST PRODUCTS TO
 HELP YOU BUILD THE HOME OF YOUR
 DREAMS

WE CARRY YOUR FAVORITE BRANDS

Now including
 the largest
 selection of
Carhartt in
 Southeast
 Iowa



FOLLOW US ON   319-754-5174
STANDARD OF BEVERDALE 
 11194 TWIN PONDS DRIVE
 WEST BURLINGTON, IA 52655 

KENNY'S ROLLER RANCH & REC CENTER

- SKATING • PARTIES • GOLF
- BATTING CAGES
- BASKETBALL BANKSHOT

319-752-2043

KENNYSROLLERRANCH.COM
 8989 Koestner Avenue | Burlington, IA 52601

MIDWEST HOME BUILDER
 A DIVISION OF MIDWEST REALTY GROUP

MIDWEST REALTY
 BUY. SELL. BUILD.

MidwestRealtyGroupInc.com
 914 Broadway Street, STE 3 | 319-237-1139

Menke & Company
 CERTIFIED PUBLIC ACCOUNTANTS

Integrity & Experience at Work for You

- ◆ Tax Planning & Preparation
- ◆ Accounting & Bookkeeping
- ◆ Full-Service Payroll
- ◆ Controllership Services
- ◆ Audit & Review
- ◆ Business Consulting

320 N. Third, Ste 300, Burlington, IA 52601
 319-753-2000 • Menkeco.com

Big River Resources
 Highway 34 & Beaverdale Rd
 West Burlington
 Phone: 319-753-1100

BigRiverResources.com

ETHANOL

Proudly Made In The
U.S.A.

CLEANER BURNING FUEL
 GOOD FOR YOU.
 GOOD FOR THE ENVIRONMENT.

2025 COMMUNITY THANKSGIVING DINNER

NOVEMBER 27 | SERVING FROM 11 AM - 2 PM
BURLINGTON COMMUNITY HIGH SCHOOL

You are cordially invited to attend the 2025 Community Thanksgiving Dinner. All are welcome to help celebrate this day of thanks. To volunteer please use the link of QR Code below, or go to the Burlington Public Library website.

If you need a ride to this event please call Community Action at 319-753-0193 by November 18.

Scan for more information:



SOUTHEASTERN COMMUNITY COLLEGE GREAT TASTES

NOVEMBER 7, 5:30 PM CHECK IN. EVENT 6 - 8:30 PM
CATFISH BEND CONVENTION & EVENT CENTER

At Great Tastes, you get to have a fun night out while raising money for an important cause.

Enjoy a wide variety of regional wines, beer, and ales and fill your plate with mouth-watering dishes.

Bid on fun silent and live auction items, win big, and leave the event knowing you've made a major difference in students lives, just by having fun.

Net proceeds fund scholarships, instructional mini-grants, and other important Southeastern Community College initiatives. For tickets and more information visit: SCClowa.ejoinme.org/MyEvents/GreatTastes2024/tabid/1426708/Default.aspx.

DISTINGUISHED CITIZENS DINNER HONORING CHRIS LEE

NOVEMBER 13 | 6 - 9 PM

Join us on Thursday, November 13 as we honor and recognize Chris Lee at our 29 Annual Distinguished Citizens Dinner. The Mississippi Valley Council, Scouting America is pleased to recognize an individual who personifies the spirit and values of Scouting. Through his many leadership efforts, Mr. Lee has shown how to promote the betterment of the Greater Burlington area.

This annual event is a major fundraiser for Scouting America. Funds from this dinner will help instill lifelong character development for youth in the Des Moines County area.

Visit MississippiValleyBSA.org/events/burlington-dcd-mccoy-133-320-608 for more information.

ART CENTER OF BURLINGTON: FRIDAY NIGHT ART HOP

NOVEMBER 21 | 6 - 7:30 PM

Need an adult moment (or 90 of them)?

Kids enjoy an art project, snack and a story for just \$10 every first and third Friday at the Art Center - and adult caregivers enjoy a grown-up time out! Children must be potty trained to attend. Please register by calling the Art Center at 319-754-8069.

For more information, follow the Art Center of Burlington on Facebook or visit: BTownArt.com.

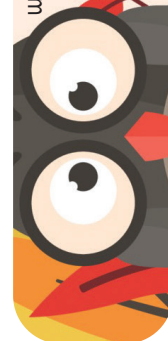


NOVEMBER 29



Submit member information, to [Brenda Lewitt at \[blewitt@greaterburlington.com\]\(mailto:Brenda.Lewitt@greaterburlington.com\)](mailto:Brenda.Lewitt@greaterburlington.com)

MEMBER SPOTLIGHT



SG General Contractor
CONSTRUCTION

- Design
- Engineering
- Construction

2204 West Mt. Pleasant Street
West Burlington, IA 52655
319-752-7154
ron@sgconstructco.com
www.sgconstructco.com

**FIRE AND WATER
CLEAN UP & RESTORATION**
24 HOUR EMERGENCY SERVICE

COMMERCIAL OR RESIDENTIAL
COMPLETE MOVE-OUTS
MOLD MITIGATION & REMEDIATION
TRAINED, UNIFORMED PROFESSIONALS

SERVPRO
OF BURLINGTON

319-754-8050 OR 877-754-8050
WWW.SERVPROBURLINGTON.COM

BECKER'S
JEWELERS

*For moments that matter
this holiday season!*

FULL SERVICE JEWELERS
www.beckerdiamonds.com

TDT
CPAs and Advisors

Burlington • Mt. Pleasant • Cedar Rapids,
Fairfield • Centerville • Oskaloosa

Advisory, Tax, Assurance
Wealth Management, Payroll
Bookkeeping

319-753-9877 www.tdtpc.com

323 Jefferson St., Burlington, IA 52601

RiverPark Place
 610 N 4th St, Ste 200
 Burlington, Iowa 52601
 319-752-6365
 info@greaterburlington.com
 GreaterBurlington.com




DOWNTOWN Holiday Open House

November 9, 10 AM - 4 PM
 (Hours May Vary by Business)

\$1,000
 Downtown Dollars Give-Away. Enter to Win!



Scan to View
 Participating Businesses



Proud to Be
 Your Community Bank
 Since 1916

FM BANK & TRUST
 fmbanktrust.bank

Member FDIC



DIXON'S
 SEAMLESS GUTTERS, LLC
 Leaf Covers, Cleaning & More!
 319-850-6097

BURLINGTON

We PUT our MINDS in
 the GUTTER... So you
 DON'T have TOO!!!

dixonsseamlessgutters.net



TWO RIVERS
 Bank & Trust

Your Trusted Partner
 Let us help you reach your financial goals.



Member
FDIC

319-753-9100 | tworivers.bank