

May 2024



# THE PARTNERSHIP

GREATER BURLINGTON PARTNERSHIP NEWSLETTER - VOL. 104 NO. 05





## NATIONAL SMALL BUSINESS MONTH

by Della Schmidt

The Greater Burlington Partnership is shining light on the importance of small business, beginning with a Small Business Breakfast event on May 14. In Des Moines County, small businesses play a vital role, employing over 30% of the workforce and

experiencing an impressive 8% growth in new establishments over the past two years, showcasing resilience and diversity across all sectors.

Local small businesses exhibit a unique commitment to community support, contributing to athletics, the arts, festivals, fundraisers, youth groups, and more. This active involvement stems from the fact that these businesses are often owned by neighbors and friends who understand the importance of giving back to enhance the quality of life in Greater Burlington.

Beyond philanthropy, small businesses, driven by entrepreneurial innovation, contribute to the community's vibrancy. This innovation is evident in local restaurant menus, Jefferson Street storefront displays, and the exemplary service offered by various professional and personal service businesses. Small business owners also play a pivotal role in organizing community events, adding value to residents' lives, and making the area appealing to tourists.

Owning a small business embodies the American Dream for many, requiring determination, grit, and calculated risk-taking. It serves as a path to financial freedom, altering family trajectories through generational business continuity. Moreover, these enterprises provide valuable employment opportunities, often with flexible options not found in larger settings.

This month, let's amplify our support for small business through intentional choices. Explore the unique products and services local entrepreneurs offer and spread the word about the invaluable contributions they make. Together, we can build a resilient small business sector, ensuring that Des Moines County remains a vibrant region that thrives economically, thanks to the sustained support of area residents.

Shop local, support local, and let's make a lasting impact this National Small Business Month.



**Della Schmidt**  
President & CEO  
319-208-0043  
[dschmidt@greaterburlington.com](mailto:dschmidt@greaterburlington.com)



**Jeremy Hess**  
Dir. of Economic Development  
319-208-0050  
[jhess@greaterburlington.com](mailto:jhess@greaterburlington.com)



**Steven Brody**  
Chamber of Commerce  
Exec. Dir. 319-208-0054  
[sbrody@greaterburlington.com](mailto:sbrody@greaterburlington.com)



**Amy Moyner**  
Downtown Partners, Inc.  
Exec. Dir. 319-208-0056  
[amoyner@greaterburlington.com](mailto:amoyner@greaterburlington.com)



**Chris Gram**  
Convention & Visitors Bureau  
Exec. Dir. 319-208-0045  
[cgram@greaterburlington.com](mailto:cgram@greaterburlington.com)



**Dustin Roth**  
Marketing & Communications  
Dir. 319-208-0048  
[droth@greaterburlington.com](mailto:droth@greaterburlington.com)



**Crystal Jolin**  
Director of Finance  
319-208-0044  
[cjolin@greaterburlington.com](mailto:cjolin@greaterburlington.com)



**Telisha Fedele**  
Talent Development Program  
Manager 319-208-0046  
[tfedele@greaterburlington.com](mailto:tfedele@greaterburlington.com)



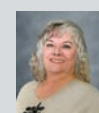
**Brenda Levitt**  
Graphic Designer  
319-208-0047  
[blevitt@greaterburlington.com](mailto:blevitt@greaterburlington.com)



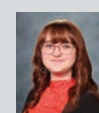
**Melissa Jones**  
Interim Business Engagement  
Manager 319-208-0052  
[mjones@greaterburlington.com](mailto:mjones@greaterburlington.com)



**Mac Holford**  
Events Manager  
319-208-0040  
[mholford@greaterburlington.com](mailto:mholford@greaterburlington.com)



**Pamela Wright**  
Administrative Assistant  
319-208-0042  
[frontdesk@greaterburlington.com](mailto:frontdesk@greaterburlington.com)



**Kaylea Felland**  
Convention & Visitors Bureau  
Prog. Coord. 319-752-8731  
[kfelland@greaterburlington.com](mailto:kfelland@greaterburlington.com)

**SUBSCRIPTIONS:** Price is \$24, which is included in annual events fees. Non-members: \$4 per issue. Periodicals postage paid at Burlington, Iowa.  
**POSTMASTER:** The Partnership is published monthly by the Greater Burlington Partnership 610 North 4th Street, Suite 200, Burlington, Iowa 52601.  
**POSTMASTER:** send address changes to Greater Burlington Partnership (USPS 001-692) 610 North 4th Street, Suite 200, Burlington, Iowa 52601.



SEE YOU THERE

2024

# Small Business Breakfast

May 14 | 7 AM



GREATER BURLINGTON  
PARTNERSHIP



May is Small Business Month, and the Greater Burlington Partnership is celebrating by recognizing the incredible businesses of Greater Burlington at the 2024 Small Business Breakfast.

This event features a breakfast buffet, keynote speaker, and the announcement of the winners of the 2024 Micro Business of the Year and 2024 Small Business of the Year awards.

Tickets are free for Chamber of Commerce members and their employees, but registration is required. **Register at [GreaterBurlington.com/register](https://GreaterBurlington.com/register).**

## ON THE COVER

### Small Business Month

Small Business Month, celebrated every year in May, is a special tribute to honor small businesses, their courage, community efforts, and hard work. At the Greater Burlington Partnership our goal is to help small business and startup owners begin and succeed. On the cover this month is Titan Broadcasting & Digital Group. They provide comprehensive marketing solutions to local businesses. As a locally owned multimedia company, Titan understands what works locally and combines marketing tactics to deliver a one-two punch on-air and online to drive results.

\* Titan Broadcasting & Digital Group (101.7 The Bull, KBKB-FM or The New Mix 107.3, KGRS), Recognized as Small Business of the Year 2023



Pictured: Left to right, seated: Eric Hanson, Darrin Wright. Left to right standing: Christy Bauer, Landon Mitchell, Missy Allen, Mercedes Ponce, L.J. Pritchard, Wyatt Reed, Amy Burkhart, Erin Aguilera, Shawn Joseph.



## WELCOME CRYSTAL JOLIN

Crystal Jolin is excited to join the Partnership, as she loves this community and desires to serve it well! Crystal's professional experience has equipped her to serve as the Director of Finance. Crystal graduated from Western Illinois University with a degree in Accountancy. She worked as a public accountant for 12 years and then moved to industry and served a local entity for 10 years.

Crystal was raised in Burlington and has lived here most of her adult life. Crystal and her husband, Joe, live in the Greater Burlington area with their 4 children. She enjoys time with her family, being outside, watching her children in their sporting events, singing, and scrapbooking in any additional spare time that she might have!



## Michael Yost Presents: CHAMPION OF HIDDEN TALENT PRESENTATION May 23 | 8 - 9 AM | RiverPark Place, Winegard Board Room

Michael Yost is the Chief Human Resource Officer at Great River Health System. Michael knows the unprecedented challenges facing health systems today. According to Yost, staffing shortages and rising labor costs are among the foremost struggles that are forcing healthcare leaders to think differently and be innovative in an industry that for decades has been resistant to change. For Yost, shaping the organization's human resource strategies and building Great River's reputation as a provider and employer of choice means thinking boldly, leveraging data analytics, and integrating the latest workforce management technologies. The strategies being employed by Great River Health, like their flexible workforce arrangement, may also be of value to other industries and organizations in our area.

**Please RSVP to Steven Brody, [sbrody@greaterburlington.com](mailto:sbrody@greaterburlington.com)**



SCAN ME



## BUSINESS after HOURS

**Zaiser's Landscaping Florist & Greenhouse**

**2400 Sunnyside Ave, Burlington | May 16, 5 - 7 PM**

Join Chamber of Commerce member businesses to build your network at Business After Hours and grow your business!





## ALL THINGS GREATER BURLINGTON PODCAST

March 30 marked the two-year anniversary of All Things Greater Burlington. Over the course of 50 episodes, Burlington/West Burlington Area Chamber of Commerce Executive Director Steven Brody, has engaged in informational and educational conversations with business owners, public officials, community leaders, and Chamber of Commerce award winners. The discussions offer insight and information for listeners to have a greater appreciation for the work that the guest is involved in. The podcast further illustrates the diversity of talent in Greater Burlington. The podcast and its episodes can be heard on Greater Burlington.com, Amazon Music, YouTube Music, Spotify, Apple Podcasts, iHeart Radio, Castbox, and

Stitcher. Make sure to subscribe to stay informed when new episodes become available. Don't forget to get caught up on recent interviews with Young Professional of the Year **Paige Tennison**, **Deb Fowler** of Century 21 Property Professionals, and **Michelle Mann Caston** of Mann's McDonald's L.C. Upcoming interviews include **Henry Bohlen** of Wildlife Lakes Elk Farm, **Michelle AbouAssaly** and **Chad Palmer** of Community Foundation of Des Moines County, and Community Impact of the Year Award winners **Brian Johnson** and **Mike Harris** from the Southeast Iowa Builders Association discussing their Build My Future Event.

*Have a suggestion on who you would like us to interview? Please contact Steven at [sbrody@greaterburlington.com](mailto:sbrody@greaterburlington.com).*

*Listen at [GreaterBurlington.com/ATGB](http://GreaterBurlington.com/ATGB)*

## INTERN CONNECTION PROGRAM

Register your intern for next month's Intern Connection Luncheon on June 11 at the Greater Burlington Partnership. This event is open to all Chamber member interns.

Email Teli Fedele at [tfedele@greaterburlington.com](mailto:tfedele@greaterburlington.com) for more information or for a copy of the monthly newsletter, The Intern Insider.



## NEW MEMBER LUNCHEON - MAY 10



On May 10, new members are invited to the Wineyard Board Room at 12 PM for a New Member Luncheon. The purpose is to meet fellow new members, learn more about the Chamber of Commerce, its benefits and programs, how to set up InfoHub accounts, submit Friday Facts, Community Calendar events and more! Attendees are encouraged to bring a laptop to follow along and receive support as needed. Chamber of Commerce Executive Director Steven Brody will be presenting. New Member Luncheons are held in May and December for members who have joined the Chamber of Commerce in the previous six months. It is also open to members whose businesses have been part of the Chamber of Commerce but are new to their leadership role.

**Please RSVP to Steven Brody, [sbrody@greaterburlington.com](mailto:sbrody@greaterburlington.com)**



## DOWNTOWN BURLINGTON, IOWA CULTURAL & ENTERTAINMENT DISTRICT

The Iowa Cultural & Entertainment District program aims to identify and celebrate well-defined, pedestrian-friendly areas within cities and counties that have a rich concentration of cultural amenities, exceptional vibrancy, a robust arts and cultural scene, and an established entertainment portfolio. By receiving this designation, Downtown Burlington becomes eligible for a range of benefits, including marketing opportunities, promotional programs, and technical assistance from the Department of Cultural Affairs.

This designation will have a positive impact on the quality of life and cultural vitality of Iowa, benefiting a significant number of individuals. By focusing on creating walkable, mixed-use spaces that serve as cultural anchors, the Iowa Cultural & Entertainment District program enriches our community and fosters a sense of civic pride. The State of Iowa continues to cultivate its cultural heritage and provide engaging experiences for residents and visitors alike.

"We're not just selling a destination, we're selling an experience," says Moyner. "Whether you're strolling through our bustling streets, savoring a gourmet meal at one of our amazing restaurants, or losing yourself in the magic of a live performance, Downtown Burlington promises to leave a lasting impression."

But the marketing extravaganza doesn't stop there. With the support of the Iowa Department of Cultural Affairs and the Iowa Arts Council, Downtown Burlington is poised to tap into a treasure trove of resources and expertise to take its marketing efforts to dizzying new heights.

So, whether you're a seasoned local or a curious traveler looking for your next adventure, Downtown Burlington invites you to join in the celebration. Get ready to be swept away by the magic of our Cultural & Entertainment District and discover why Downtown Burlington is the beating heart of Iowa's cultural scene.

*To learn more about the Iowa Cultural & Entertainment Districts program, please visit [iowaculture.gov](http://iowaculture.gov).*



# GET READY TO BLOSSOM: FLOWER PLANTING EVENT IN DOWNTOWN BURLINGTON!

May 20 at 4:30 PM | Nancy Neafie Park



Hey there, green thumbs and nature lovers! Are you ready to roll up your sleeves and add a splash of color to our beloved Downtown Burlington? Then mark your calendars because Downtown Partners, Inc. is calling all volunteers for a Flower Planting Event that promises to make our streets bloom with beauty!

Gather your gardening gear and enthusiasm and meet us at Nancy Neafie Park at 4:30 PM. With your help, we'll transform Downtown Burlington into a picturesque oasis that's sure to brighten up everyone's day.

Whether you're a seasoned gardener with a green thumb or a novice eager to get your hands dirty, we welcome all hands-on deck! No experience necessary,

just bring your passion for plants and a willingness to make a difference. A heartfelt thank you to our partners in bloom, the Witte Foundation, whose unwavering support has helped us turn our floral dreams into reality, and Zaiser's for providing us with the most beautiful flowers to plant!

Don't forget to pack your gardening essentials - gloves, trowels, and a can-do attitude. We'll provide the flowers and the fun, you bring the enthusiasm and energy!



May Premier Sponsor:



## JEFFERSON STREET FARMERS MARKET

Jefferson Street Farmers Market is back in action! **Every Thursday from May to September, from 4:30 to 7 PM**, prepare to embark on a culinary adventure like no other.

Prepare to be dazzled by the array of fresh, locally sourced produce, handcrafted delicacies, and artisanal goodies that await you at every turn. From juicy tomatoes to crisp corn, every bite is bursting with the flavors of the season.

Local musicians will be creating a fun atmosphere to shop to and don't be shy, you can dance like nobody's watching!

The Jefferson Street Farmers Market isn't just for

grown-ups. With a plethora of activities catering to children of all ages, bring the whole family along for a day of laughter, exploration, and delicious discoveries.

By shopping at the Jefferson Street Farmers Market, you're not just filling your basket with goodies you're supporting local farmers, artisans, and vendors who pour their heart and soul into their craft. It's a win-win for everyone involved!

So mark your calendars, rally your friends and family, and get ready to dive headfirst into the deliciousness that is the Jefferson Street Farmers Market. With every bite, every beat, you are not just indulging in the flavors of the season, you're savoring the spirit of our vibrant community.

Don't miss out on the fun - see you at the market.

# LEADERSHIP TEAM

Thank you to all the individuals who donated their time and leadership.



## Chair

Eric Benne  
Two Rivers Bank & Trust

## Cabinet Members

Todd Ackerman  
World Insurance

Melinda Bickel  
Bickel's Cycling & Fitness

Bryan Bross  
Klingner & Associates P.C.

Jeff Burkhart  
MidWestOne Bank

Todd Darnall  
McConnell Lofts

Gary Hoyer  
Great River Entertainment, LLC

Bob Huffman  
Huffman's Farm & Home

Stephanie Kozlowski  
Kozlowski Law Group, LLC

Tim Lundgren  
Farm Bureau Financial Services

Ryan Nagrocki  
Midwest Realty Group, Inc.

Jim Olson  
First Interstate Bank

Josh Schuff  
3E Electrical Engineering and  
Equipment Co.

Chris Smith  
Carl A. Nelson & Company

Craig Smith  
Sterzing Food Company

## Honorary Cabinet

Dr. Michael Ash  
Southeastern Community  
College

Dr. Michael McCoy  
Great River Health

Tammy McCoy  
Capitol Performing Arts Center

Charles E. Walsh  
Farmers & Merchants  
Bank & Trust

Randy Winegard  
Winegard Company

The Greater Burlington Partnership, along with its Partnering for the Future investors, shares an unwavering commitment to fostering economic development in Des Moines County. Through a history of successful endeavors in business development, Downtown revitalization, community enhancement, and visitor attraction, the Partnering for the Future initiative is poised to continue its trajectory of progress.

At the core of the Partnering for the Future program lies the establishment of a cohesive community vision and strategy. Looking ahead to the 2024-2028 five-year plan, a blend of traditional and innovative approaches will be employed to drive economic, community, and tourism development forward. With a firm dedication to assuming a leadership role, fostering collaboration, and strategically allocating resources, the Partnership aims to propel these initiatives to fruition. "Such initiatives are not undertaken alone," stated Greater Burlington Partnership President and CEO Della Schmidt. "This work is made possible through the support of Partnering for the Future Investors, led by the efforts of the Capital Campaign Cabinet."

The focal points of the upcoming endeavors revolve around three core initiatives:

1. **Grow Workforce:** Recognizing the multifaceted nature of workforce growth, the Partnership adopts a comprehensive approach. Strategies encompass education and engagement of local students, enticing former residents back, and retaining the current skilled workforce. Creating and preserving good jobs is essential, whether through nurturing new businesses or bolstering existing ones.
2. **Grow Business:** Sustained business attraction is vital for economic expansion and job creation. With a focus on increasing spending within Greater Burlington, the Partnership's strategy revolves around leveraging the community's role as a regional shopping hub. Targeted initiatives aim to combat retail leakage, stimulate spending, and extend visitor stays.
3. **Grow Population:** Addressing the challenge of workforce scarcity, attracting and welcoming new individuals to Greater Burlington is imperative. To achieve this, the community must offer enhanced infrastructure and amenities. Partnering for the Future initiatives are designed to elevate the quality of life, positioning Greater Burlington as an attractive destination for relocation.



## A MESSAGE FROM ERIC BENNE PARTNERING FOR THE FUTURE CABINET CHAIR

We are thrilled to announce that thanks to the incredible generosity of our investors, the Partnering for the Future Campaign has exceeded its goal and is nearing \$1.9 million in pledges. Our investors' contributions come at a crucial time and will allow us to achieve our 5-year priorities to: Grow Workforce, Grow Business and Grow Population. Thank you to each and every one of you that contributed to the success of the campaign, be it the campaign cabinet members, the team at the Partnership or our investors, your generosity will make a lasting impact in this community.

# THANK YOU

## Partnering for the Future Investors

Below is a list of businesses that have made a commitment to better our community as of April 10, 2024.

### TITANIUM



### PLATINUM



### GOLD

Afinitas  
City of West Burlington  
Connection Bank  
C.U.R.E. Solutions  
First Interstate Bank  
Great River Entertainment  
Harvest Financial  
Ideal Ready Mix Company

Industrial Service Corporation  
ITC Midwest  
Mann's McDonald's L.C.  
MidWestOne Bank  
Midwest Realty Group  
MTC Technologies  
SG Construction Company  
Shottenkirk Superstore

Spearfish Development, LLC -  
Uptown Village Apartments  
U.S. Bank, N.A.  
Valley Distribution Corporation  
Winegard Company  
World Insurance Associates, LLC

### SILVER

3E Electrical Engineering and Equipment Co.  
Access Energy Cooperative  
AIM Credit Union  
Aspelmeier, Fisch, Power, Engberg & Helling, P.L.C.  
Bickel's Cycling & Fitness  
BNSF Railway  
Brockway Mechanical & Roofing Company, Inc.  
Bruner, Cooper & Zuck, Inc.  
Burlington Black Water LLC  
Burlington YMCA  
Carl A. Nelson & Company  
Caston Holdings, Inc.  
Century 21 Property Professionals  
City of Mediapolis  
Davis Radiology  
Des Moines County Historical Society

Diamond Vogel, Inc.  
Eastern Iowa Light and Power Cooperative, Inc.  
Edward Jones - Jon Hart  
Farm Bureau Financial Services - Tim Lundgren  
Farmers Savings Bank  
Flint Cliffs Manufacturing  
Frank Millard & Company  
Heartland Packaging Corporation  
Huffman's Farm & Home  
Jerilyn Horn Kitchen & Bath Design Co.  
King Kleen LLC  
Klingner and Associates, P.C.  
Kozlowski Law Group, LLC  
KPI Concepts, LLC  
McConnell Lofts  
Menke & Company

Northeast Missouri Electric Power  
Cooperative, Inc.  
Pierson Inc.  
Queso's Mexican Bar & Grill  
Refreshment Services Pepsi  
Ruhl&Ruhl Realtors  
Serving It Safe with Ann LLC  
Southeastern Community College  
Sterzing Food Company  
Summer Street Animal Clinic  
TDT CPAs and Advisors  
The Drake, LLC  
Zaiser's Landscaping, Florist & Greenhouse

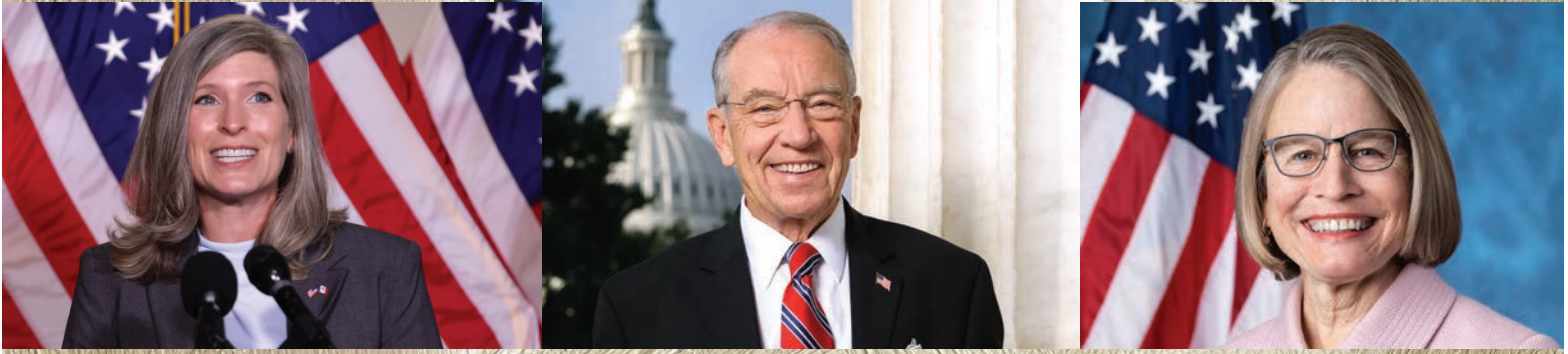
Interested in joining the list of those helping to realize the vision and strategies laid out in the Partnering for the Future 2024 - 2028 five-year plan? There is still time, contact Della Schmidt at dschmidt@greaterburlington.com with questions.

Scan the QR Code to view the Partnering for the Future 2024 - 2028 Case of Investment.



## Southeast Iowa Days - Washington, D.C. | April 30 and May 1

A unique opportunity to bring the business voice to Washington, D.C.



Over 30 delegates representing Des Moines, Henry, Lee, and Louisa Counties traveled to our Nation's Capital to bring our business voices to Washington D.C. The theme was Economic Vitality in Southeast Iowa, and the delegation focused on regional priorities including Infrastructure, Utilities/Natural Gas, and Workforce/Immigration. Meetings were held with Congresswoman Marianne Miller-Meeks, Senator Chuck Grassley, Senator Joni Ernst, Deputy Assistant Secretary of Commerce Christian Killingsworth, President/CEO of the International Economic Development Council Nathan Ohle, and representatives from the U.S. Chamber of Commerce. The delegation also had the opportunity to tour the U.S. Capitol and the White House.

## SUMMER BOAT DOCKING VOLUNTEERS NEEDED

Viking boat dockings will bring an influx of visitors to Greater Burlington beginning in July. As passengers head Downtown, they will be greeted by friendly faces ready and able to answer questions about Greater Burlington, its history, unique attractions, and must-visit restaurants and shops. The Greater Burlington Convention and Visitors Bureau is seeking local volunteers and paid Tour Guides who like meeting interesting folks from far off places and are willing to spend some time in beautiful Downtown Burlington. There are 10 dockings scheduled for this season, subject to change, which means many opportunities to be a part of such an amazing and fun-filled experience.

Contact Kaylea Felland at (319) 752-8731 or [kfelland@greaterburlington.com](mailto:kfelland@greaterburlington.com).

## Greater Burlington Leadership | Great Leaders Today and Tomorrow

Applications are open for the 2024 - 2025 Greater Burlington Leadership class through the Chamber of Commerce. This nine-month program, catering to both seasoned and emerging leaders, promises to enhance leadership skills through professional development classes, onsite tours, and personal interactions with key figures in the Greater Burlington community. Delving into crucial topics like community styles and project management, participants gain valuable insights. With fourteen successful years and 195 graduates, the program's impact on leadership development is evident. Notably, Leadership Class alumni actively contribute to the program's ongoing success by serving on the planning committee. Their insights shape the curriculum, ensuring continued relevance.

The program's influence extends beyond the classroom, fostering lasting friendships among alumni who regularly organize socials and lunch dates. This camaraderie is a testament to the enduring significance of Greater Burlington Leadership. Don't miss the chance to enhance leadership skills and join the Greater Burlington Leadership community. Apply now for the 2024 - 2025 Greater Burlington Leadership class and take the next step in your professional development journey.

### WHAT ARE PEOPLE SAYING ABOUT GREATER BURLINGTON LEADERSHIP?



"I highly recommend the Greater Burlington Leadership program to anyone who wants to get more involved in their community or advance in their professional roles. Personally, I found that building relationships with other professionals was one of the most valuable aspects of the program. As someone who did not grow up in Burlington, the program provided me with an excellent opportunity to learn more about the area and what it has to offer. The skills I gained and the connections I made through this program have greatly enriched my life." ~ *Kailey Gibbs, Physician Liaison at Great River Health, Class of 2021 - 2022*



"I highly recommend Greater Burlington Leadership to anyone who wants to make a difference in both their community and their career. I had followed this class on social media and through the news outlets for some time and was excited to be chosen by AO to participate. A few things I've learned include how to bond with a group of people outside my normal network, how I can make a difference in my community and how a group of people can come together as a team and have an impact and have fun along the way. Greater Burlington Leadership is an opportunity in our community that everyone should take advantage of." ~ *Brenda Clements, Quality Manager at American Ordnance, Class of 2023 - 2024*



"The Greater Burlington Leadership program is a valuable opportunity for new and aspiring leaders to build their skills while learning more about our community, growing their network, and having fun in the process. Whether they are new to the Greater Burlington area or not, the program gives them insights into different types of industries and organizations, helping the participants understand how they are all interconnected and contribute to making greater Burlington a great place to work, live, and play." ~ *Cory Johnson (alumni, employer, and Leadership Committee member), Director of Curriculum for Burlington Community School District, Class of 2018 - 2019*

### 2024 - 2025 SESSION TOPICS:

- Arts & Culture
- Tourism
- Economic Development
- Education
- Environment
- Government
- Healthcare
- Diversity/Inclusion
- Public Safety
- Workforce

**DEADLINE TO APPLY IS JULY 15.**



# WELCOME NEW MEMBERS

Please welcome these new Chamber of Commerce members by sending an email, liking their Facebook page or visiting their website. Even better, stop by to introduce yourself, exchange business cards and help grow their network as well as your own!

## ImpactLife

[Bloodcenter.org/donate/locations/iowa/burlington/](http://Bloodcenter.org/donate/locations/iowa/burlington/), 3407 Agency St  
Kali Eastin, Donor Relations Consultant, 319-754-4611

[keastin@impactlife.org](mailto:keastin@impactlife.org)

ImpactLife (formerly Mississippi Valley Regional Blood Center) is the exclusive provider of blood products and services to more than 120 hospitals in Illinois, Iowa, Missouri and Wisconsin. ImpactLife collects blood at 22 fixed site donor centers and at more than 5,000 mobile blood drives held each year.

## KWQC

Kelly Johannes, Account Executive, 563-383-7160

[kelly.johannes@kwqc.com](mailto:kelly.johannes@kwqc.com)

Celebrating 75 years of broadcasting to the greater Quad Cities.

## Allen Roofing & Construction, Inc.

[Allenroofinginc.com/](http://Allenroofinginc.com/), 608 N Lincoln St, Mount Pleasant  
Nathan Trappe, President, 563-539-4135, [arcnathan@hotmail.com](mailto:arcnathan@hotmail.com)

ARC is a full-service roofing & construction provider that has been serving Iowa since 1999. ARC specializes in flat commercial and low-sloped roofing, along with residential roofing. From a small home to a large hospital or warehouse, ARC has the right products and fully trained installers to insure you get a great product at a fair price with a factory warranty!

## Lightning Liquor + Smoke Shop

[Facebook.com/profile.php?id=100083930141096](https://www.facebook.com/profile.php?id=100083930141096), 624 Angular  
Nancy McClure, Owner, 319-470-6077, [llandsllc22@gmail.com](mailto:llandsllc22@gmail.com)

A retail convenience store with friendly staff, providing customer service while serving in a local market with a convenient location. Lightning Liquor + Smoke Shop offers specialized merchandise, groceries, essential home products, beverages and tobacco. Hours: 8 AM to 10 PM Sunday - Thursday, 8 AM to midnight Friday & Saturday.

# RIBBON CUTTINGS & CELEBRATORY EVENTS



**CASEBINE COMMUNITY CREDIT UNION  
75TH ANNIVERSARY**



**NATURE'S CORNER, INC.  
45TH ANNIVERSARY**



**PREMIER PHYSICAL THERAPY OF IOWA  
GRAND OPENING**



**RE/MAX REAL ESTATE SPECIALISTS, INC  
NEW OFFICES**

**SG** General Contractor  
**CONSTRUCTION**

- Design
- Engineering
- Construction

2204 West Mt. Pleasant Street  
West Burlington, IA 52655  
319-752-7154  
[ron@sgconstructco.com](mailto:ron@sgconstructco.com)  
[www.sgconstructco.com](http://www.sgconstructco.com)

**Zaiser's**  
LANDSCAPING  
FLORIST & GREENHOUSE  
2400 SUNNYSIDE AVE • BURLINGTON, IA • 319-752-6871  
[ZaisersGardenCenter.com](http://ZaisersGardenCenter.com)

**Menke & Company**  
CERTIFIED PUBLIC ACCOUNTANTS  
Integrity & Experience at Work for You

- ◆ Tax Planning & Preparation
- ◆ Accounting & Bookkeeping
- ◆ Full-Service Payroll
- ◆ Controllership Services
- ◆ Audit & Review
- ◆ Business Consulting

320 N. Third, Ste 300, Burlington, IA 52601  
319-753-2000 • [Menkeco.com](http://Menkeco.com)

**FIRE AND WATER  
CLEAN UP & RESTORATION**  
24 HOUR EMERGENCY SERVICE

COMMERCIAL OR RESIDENTIAL  
COMPLETE MOVE-OUTS  
MOLD MITIGATION & REMEDIATION  
TRAINED, UNIFORMED PROFESSIONALS

**SERVPRO**  
OF BURLINGTON

319-754-8050 OR 877-754-8050  
[WWW.SERVPROBURLINGTON.COM](http://WWW.SERVPROBURLINGTON.COM)



DIP IT. DIP IT GOOD.

## RAGBRAI IN GREATER BURLINGTON



Interested in helping welcome thousands of RAGBRAI riders to Greater Burlington? Interested in being a vendor for the event? Just interested in RAGBRAI in general and want to learn more?

Check out [BurlingtonRagbrai.com](http://BurlingtonRagbrai.com) for details and route information!

## GREATER BURLINGTON PARTNERSHIP SPONSORSHIP OPPORTUNITIES



Who will join Farmers Savings Bank, AIM Credit Union and U.S. Bank, N.A., as a monthly sponsor of the Jefferson Street Farmers Market this season? Hundreds of people make their way Downtown every Thursday from May through September to purchase fresh fruit & veggies, plants, baked goods, craft items, and to grab a food truck meal or snack! August & September are still open (\$2,000 each), as is the Farmers Market entertainment sponsorship for the FULL season (May through September, \$1,250).

Contact Amy Moyner for details or to become a sponsor.



IOWA STATE UNIVERSITY  
Extension and Outreach

## BUILDING A #STRONGIOWA

### Des Moines County Extension

1700 W Mt Pleasant St, West Burlington, IA 52655  
(319) 671-7165

[www.extension.iastate.edu/desmoines](http://www.extension.iastate.edu/desmoines)



BECKER'S  
JEWELERS  
*Nobody does "I do" like we do*



FULL SERVICE JEWELERS  
[www.beckerdiamonds.com](http://www.beckerdiamonds.com)

Want to See  
Your AD Here



Contact: Melissa Jones  
[mJones@greaterburlington.com](mailto:mJones@greaterburlington.com)

# MAY may

## EVENTS

View more events at  
[GreaterBurlington.com/Events](http://GreaterBurlington.com/Events)

1, 8, 15, 22, 29 - Historic Newspaper Readings  
 Des Moines County Historical Society, 10 AM  
[DMCHS.org](http://DMCHS.org)

2, 9, 16, 23 & 30 - Jefferson Street Farmers Market  
 Downtown Burlington, 4:30 PM  
[Facebook.com/downtownburlingtoniamarket](http://Facebook.com/downtownburlingtoniamarket)

2 - Comedy Thursday: Hypnotist Doug T  
 Memorial Auditorium, 7:30 PM  
[BurlingtonRiverfront.org](http://BurlingtonRiverfront.org)

3 - 5 - Spring Genealogy & Local History Workshop  
 Burlington Public Library, 9 AM  
[Burlington.lib.ia.us](http://Burlington.lib.ia.us)

3 - 16 - May Gallery Show: Burlington High School Student Art  
 Art Center of Burlington, hours vary  
[BTownArt.com](http://BTownArt.com)

3 - Artist Reception  
 Art Center of Burlington, 5 - 8 PM  
[BTownArt.com](http://BTownArt.com)

3 and 17 - Friday Night Art Hop  
 Art Center of Burlington, 6 PM  
[BTownArt.com](http://BTownArt.com)

3 - Jason Hudy: Mesmerizing Magic  
 Legacy Theater, Carthage, IL, 7 PM  
[TheLegacyTheater.com](http://TheLegacyTheater.com)

4 - Master Gardener Plant Sale  
 Des Moines County Extension Office, 8 AM  
[Facebook.com/dmextension](http://Facebook.com/dmextension)

4 - Town Hall Lecture: Stoney Hollow & Starr's Cave  
 Des Moines County Historical Society, 11 AM  
[DMCHS.org](http://DMCHS.org)

4, 10, 25 - Weekly Racing  
 34 Raceway, 5 PM  
[34Raceway.com](http://34Raceway.com)

4 - Waves to Elements  
 Art Center of Burlington, 7 PM  
[btownart.com](http://btownart.com)

4 - Lojo Russo  
 Night Cap Listening Lounge, 7 PM  
[LiveAtTheCapitol.com](http://LiveAtTheCapitol.com)

7, 14, 21 & 28 - Museum Family Story Time  
 Des Moines County Historical Society, 10 AM  
[DMCHS.org](http://DMCHS.org)

9 - Music & Conversation: Jeff Poulter  
 Night Cap Listening Lounge, 6 PM  
[LiveAtTheCapitol.com](http://LiveAtTheCapitol.com)

10 - New Member Luncheon  
 RiverPark Place, Winegard Board Room, 12 PM  
[GreaterBurlington.com](http://GreaterBurlington.com)

10 - Revel in Red  
 Capitol Performing Arts Center, 7:30 PM  
[LiveAtTheCapitol.com](http://LiveAtTheCapitol.com)

11 - Jarred Rouggy  
 Night Cap Listening Lounge, 6 PM  
[LiveAtTheCapitol.com](http://LiveAtTheCapitol.com)

11 - Queen Flash  
 Legacy Theater, Carthage, IL, 7 PM  
[TheLegacyTheater.com](http://TheLegacyTheater.com)

11 - Melody Hart Family Band  
 Memorial Auditorium, 7:30 PM  
[BurlingtonRiverfront.org](http://BurlingtonRiverfront.org)

14 - Small Business Breakfast  
 Catfish Bend Convention & Event Center, 7 AM  
[GreaterBurlington.com](http://GreaterBurlington.com)

16 - Business After Hours  
 Zaiser's Landscaping Florist & Greenhouse, 5 - 7 PM  
[GreaterBurlington.com](http://GreaterBurlington.com)

16 - Night Cap House Band  
 Night Cap Listening Lounge, 7 PM  
[LiveAtTheCapitol.com](http://LiveAtTheCapitol.com)

18 - 2X Monster Truck Series  
 34 Raceway, 11 AM  
[34Raceway.com](http://34Raceway.com)

18 - Sounds of the Past  
 Des Moines County Historical Society, 10 AM  
[DMCHS.org](http://DMCHS.org)

18 - Hallelujah Auditions Season 4 Finale  
 Memorial Auditorium, 7 PM  
[BurlingtonRiverfront.org](http://BurlingtonRiverfront.org)

18 - Taylor Made  
 Capitol Performing Arts Center, 7:30 PM  
[LiveAtTheCapitol.com](http://LiveAtTheCapitol.com)

20 - Downtown Burlington Flower Planting  
 Downtown Burlington  
 Nancy Neife Park, 4:30 PM  
[GreaterBurlington.com](http://GreaterBurlington.com)

21 - Tea Luncheon  
 Garrett-Phelps House, 1 PM  
[DMCHS.org](http://DMCHS.org)

23 - Champion of Hidden Talent Presentation  
 RiverPark Place, Winegard Board Room, 8 AM  
[GreaterBurlington.com](http://GreaterBurlington.com)

25 - Kiwanis Pancake Breakfast  
 Port of Burlington, 6:30 - 10:30 AM  
[BurlingtonKiwanis.com](http://BurlingtonKiwanis.com)

25 - The Lone Soul  
 The Drake, 6 PM  
[TheDrakeRestaurant.com](http://TheDrakeRestaurant.com)

25 - Jefferson Connection  
 Night Cap Listening Lounge, 7 PM  
[LiveAtTheCapitol.com](http://LiveAtTheCapitol.com)

26 - Sprint Invaders  
 34 Raceway, 5 PM  
[34Raceway.com](http://34Raceway.com)

29 - Shepherd's Table Free Community Meal  
 First Congregational Church, 4:30 PM  
[FCCBurlington.org](http://FCCBurlington.org)

31 - Loren Walker Memorial Golf Tournament  
 Flint Hills Golf Course, 12:30 PM  
[SCCIowa.edu](http://SCCIowa.edu)

## STANDARD OF BEVERDALE

WHAT ARE YOU DREAMING OF? LET US HELP YOU BUILD IT.



- ROOFING
- FENCING
- MATERIALS
- PLUMBING
- WINDOWS
- HARDWARE
- DOORS
- ELECTRICAL
- SIDING
- APPLIANCES

WE SUPPLY THE BEST PRODUCTS TO HELP YOU BUILD THE HOME OF YOUR DREAMS

WE CARRY YOUR FAVORITE BRANDS

Now including  
 the largest  
 selection of  
 Carhartt in  
 Southeast  
 Iowa



carhartt®

FOLLOW US ON 319-754-5174

STANDARD OF BEVERDALE

11194 TWIN PONDS DRIVE  
 WEST BURLINGTON, IA 52655

**Access Energy Cooperative**  
 A "Truancy" Cooperative

Owned by the members we serve.

[www.accessenergycoop.com](http://www.accessenergycoop.com)  
 1-866-242-4232

**SILGAN CONTAINERS**  
 BEST IN CLASS

2019 MANUFACTURER OF THE YEAR

3725 Division St, Burlington, IA 52601  
 319-208-0610 | [SilganContainers.com](http://SilganContainers.com)

**RE/MAX**  
 REAL ESTATE SPECIALISTS, INC.

LOCALLY OWNED  
 NATIONALLY KNOWN

**SOLD FOR SALE**

Find us on

123 Broadway St, West Burlington, IA 52655  
[BurlingtonIowaHomes.com](http://BurlingtonIowaHomes.com) • 319-752-8888  
 Each office is independently owned and operated

**Big River Resources**  
 Highway 34 & Beverdale Rd  
 West Burlington  
 Phone: 319-753-1100

[BigRiverResources.com](http://BigRiverResources.com)

**ETHANOL**

Proudly Made In The U.S.A.

CLEANER BURNING FUEL  
 GOOD FOR YOU.  
 GOOD FOR THE ENVIRONMENT.

**CORRECTION -  
THE BEANCOUNTER  
COFFEEHOUSE & DRINKERY**



The Beancounter Coffeehouse & Drinkery was left out of the early membership renewal list in the March edition of The Partnership Newsletter. We apologize for this error.

**JASON HUDY MAGIC**

**May 3, 7 PM | The Legacy Theater, Carthage, IL**

From Disney Cruise Lines to Six Flags to the Mariana Islands, consummate magician Jason Hudy has entertained, engaged, astonished and amazed audiences in more than 8,000 shows.

Don't miss this one-of-a-kind show - Vegas quality entertainment in small-town Carthage!

Tickets are \$25 for adults, \$15 for kids age 12 and under, and available on the theater website and at the theater box office.

For more information, follow The Legacy Theater on Facebook or visit: [TheLegacyTheater.com](http://TheLegacyTheater.com).

**ANNUAL DES MOINES COUNTY  
MASTER GARDENER PLANT SALE**

**May 4, 8 AM - 12 PM | Iowa State University  
Extension and Outreach, Des Moines County**

Des Moines County Master Gardeners will hold their annual plant sale, rain or shine, at the Des Moines County Extension Office in West Burlington. Annuals, perennials, herbs, vegetable plants, and houseplants will be available for sale.

Tools, horticultural books, and other garden-related items will also be available for purchase.

CASH or CHECK ONLY.

For more information, follow the Des Moines County Extension Office on Facebook or visit: [Extension.IAState.edu](http://Extension.IAState.edu).

**BURLINGTON GOLF CLUB  
125 YEAR ANNIVERSARY CELEBRATION**

**Ribbon Cutting | May 30, 12 PM  
Open House | June 1, 12 - 4 PM**

There will be an Open House on June 1 from 12 - 4 PM at the Burlington Golf Club as well as a Ribbon Cutting on May 30 at 12 PM to celebrate their 125<sup>th</sup> anniversary. We encourage the public to come see what BGC is all about, and special membership opportunities will be offered exclusively during the Open House. The Burlington Golf Club is the oldest continuously operating golf club west of the Mississippi River. It traces its roots to 1899, when Charles C. Clark and Jackson Garrett organized friends to purchase land for a private golf club on the north edge of Aspen Grove Cemetery.

**2ND ANNUAL YOUNG HOUSE FAMILY  
SERVICES GOLF TOURNAMENT**

**May 10, 12 - 6 PM | Flint Hills Golf Course**

2nd Annual Golf Tournament (four-person best shot). May 10 at Flint Hills Golf Course. 12 PM check-in, 1 PM shot gun start. Lunch included. \$75/person or \$300/team.

Do you want to be a sponsor? Contact [arooney@younghouse.org](mailto:arooney@younghouse.org) for more information!

**SOUTHEASTERN COMMUNITY COLLEGE  
GOLF OUTING**

**June 14, 12 - 6 PM | Burlington Golf Club**

The SCCAA is excited to announce the new location for their annual golf outing - The Burlington Golf Club! Proceeds from the event fund scholarships, mini-grants for college programming, and recognition to honor our Distinguished Alumni. \$100 per golfer (Golfers don't have to be SCC alumni!) or \$600 for corporate team sponsorship.

Contact Val Giannettino at [vgiannettino@sccowa.edu](mailto:vgiannettino@sccowa.edu).



**MEMBER SPOTLIGHT**

Submit member information, to Brenda Levitt at [blevitt@greaterburlington.com](mailto:blevitt@greaterburlington.com)

**ADDINGTON PLACE  
OF BURLINGTON**  
*Assisted Living & Memory Care*

**(319) 752-0260**  
[www.AddingtonPlaceofBurlington.com](http://www.AddingtonPlaceofBurlington.com)  
5175 West Ave., Burlington, IA

**Area Recyclers**

HazChem Center | Area Recyclers  
DMC Landfill | Recycled 2 You Store | Electronic Waste

Catch the recycling spirit - go curbside with your recycling!  
**319-753-8126 • [DMCWaste.org](http://DMCWaste.org)**

Like and Follow AREA RECYCLERS on Facebook

DMCRSWC | 1818 W Burlington Ave, Burlington, IA 52601

**KENNY'S  
ROLLER RANCH  
&  
REC CENTER**

- SKATING • PARTIES • GOLF
- BATTING CAGES
- BASKETBALL BANKSHOT

**319-752-2043**  
**[KENNYSROLLERRANCH.COM](http://KENNYSROLLERRANCH.COM)**  
8989 Koestner Avenue | Burlington, IA 52601

RiverPark Place  
 610 N 4th St, Ste 200  
 Burlington, Iowa 52601  
 319-752-6365  
 info@greaterburlington.com  
 GreaterBurlington.com



**Saturday, July 20, 2024 | 9 AM – 4 PM**

**Repurposed Architectural Salvage**  
**Antique Handmade**

**=A VERY=**  
**Vintage Market**  
 DOWNTOWN BURLINGTON

Premier Sponsor: **STANDARD OF BEVERDALE**

Media Sponsor: **TITAN**  
WHEEL THE BALL

Map Sponsor: **Addington Place of Burlington**

**A VERY VINTAGE MARKET NIGHT OUT JULY 19**

Vintage enthusiasts and party-goers, mark your calendars because A Very Vintage Night Out is about to kick-start the excitement for the highly anticipated A Very Vintage Market! On the eve of the main event, this soirée promises an evening of drinks, delights, and sneak peeks you won't want to miss.

As the prelude to the main event, A Very Vintage Night Out offers attendees an exclusive opportunity to mingle, sip on drink specials, and get a tantalizing sneak peek at what the market has in store. It's not just a party – it's a chance to discover your favorite vendors ahead of time and snag those must-have treasures before the crowds descend.

**A VERY VINTAGE MARKET JULY 20**

Get ready to dive into a world of timeless treasures at this year's A Very Vintage Market in historic Downtown Burlington! This much-loved outdoor event has become a staple in the community, attracting thousands of eager shoppers in search of one-of-a-kind gems.

As the sun shines down on our picturesque streets, prepare to embark on a shopping adventure like no other. From antique furniture to repurposed home décor, architectural salvage to farmhouse accents, and handcrafted goods, there's something to pique every interest and delight every taste.



SCAN ME



**Your Trusted Financial Partner**

Let us help you reach your financial goals.

tworivers.bank | 888-226-6063




**GREATER BURLINGTON PARTNERSHIP**

Chamber of Commerce  
 Economic Development  
 Convention & Visitors Bureau  
 Downtown Partners, Inc.

Follow The Partnership




*Proud to Be*  
**Your Community Bank**  
 Since 1916

**F&M BANK & TRUST**  
 fmbanktrust.bank

