



THE PARTNERSHIP

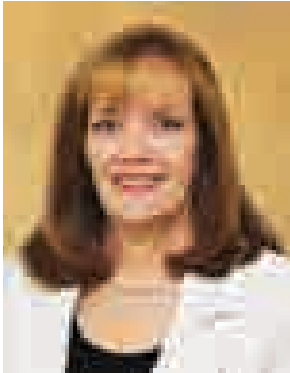
GREATER BURLINGTON PARTNERSHIP NEWSLETTER - VOL. 104 NO. 03



2024

ANNUAL

AWARDS



ANNUAL DINNER AWARD PRESENTATIONS

by Della Schmidt

For one evening each year, the Greater Burlington Partnership gathers together to celebrate our fantastic businesses, organizations, and professionals at the Partnership Annual

Meeting. The award recipients accomplished much in 2023, not the least of which is contributing significantly to the strength of the community.

The 2023 Community Awards were presented to businesses, people, and organizations in recognition of investments of time, finances, innovative services, and creative solutions. Exemplified through expanding business operations, millions of dollars invested in both new construction projects and redevelopment of existing facilities, generous philanthropic giving, and hundreds of hours in volunteer time, these award-winners help make Greater Burlington a thriving community.

The Greater Burlington Partnership honors the 2023 Community Award Winners:

- Downtown Distinction: Brandon and Kathy Bentz
- Project of the Year: FunCity Courts
- Community Impact: Southeast Iowa Builders Association for Build My Future
- Best Renovation to a Facility: The Busted Cup Brewhouse
- Young Professional of the Year: Paige Tennison
- Business Person of the Year: TJ Widbin
- Champion of Hidden Talent: Great River Health for The Right Choice Program
- 2023 Emmy Award: Gretchen Miller, for her continued years of community service. Gretchen is a member of the Burlington Lightscape Committee and has played a key role in the lighting of Downtown Burlington's steeples, and the Great River Bridge, with plans to illuminate historic Snake Alley.

Des Moines County Entrepreneur Competition Award Winner:

- 2023 Des Moines County Entrepreneur Competition: Anna, Kayla, and Taylor Marino, Taste & Seek

Additionally, the Chamber of Commerce Chairman of the Board presented the following awards:

- Chairman's Award: Stephanie Kozlowski, Kozlowski Law Group, LLC
- Chairman's Greatest Economic Impact: Western Smokehouse Partners, LLC

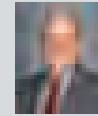
Videos highlighting each of the award winners can be viewed by visiting greaterburlington.com.



Della Schmidt
President & CEO
319-208-0043
dschmidt@greaterburlington.com



Jeremy Hess
Dir. of Economic Development
319-208-0050
jhess@greaterburlington.com



Steven Brody
Chamber of Commerce
Exec. Dir. 319-208-0054
sbrody@greaterburlington.com



Amy Moyner
Downtown Partners, Inc.
Exec. Dir. 319-208-0056
amoyner@greaterburlington.com



Chris Gram
Convention & Visitors Bureau
Exec. Dir. 319-208-0045
cgram@greaterburlington.com



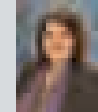
Dustin Roth
Marketing & Communications
Dir. 319-208-0048
droth@greaterburlington.com



Mary Beth Sanchez
Director of Finance
319-208-0044
mbsanchez@greaterburlington.com



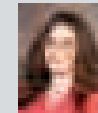
Telisha Fedele
Talent Development Program
Manager 319-208-0046
tfedele@greaterburlington.com



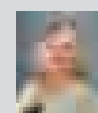
Brenda Levitt
Graphic Designer
319-208-0047
blevitt@greaterburlington.com



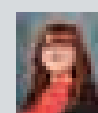
Marty Mogk
Member & Guest Services
Manager 319-208-0052
mmogk@greaterburlington.com



Mac Holford
Events Manager
319-208-0040
mholford@greaterburlington.com



Pamela Wright
Administrative Assistant
319-208-0042
frontdesk@greaterburlington.com



Kaylea Felland
Convention & Visitors Bureau
Prog. Coord. 319-752-8731
kfelland@greaterburlington.com

SUBSCRIPTIONS: Price is \$24, which is included in annual events fees. Non-members: \$4 per issue.

POSTMASTER: The Partnership is published monthly by the Greater Burlington Partnership 610 North Fourth Street, Suite 200, Burlington, Iowa 52601.

POSTMASTER: send address changes to Greater Burlington Partnership (USPS 001-692) 610 North Fourth Street, Suite 200, Burlington, Iowa 52601.

ON THE COVER

Annual Meeting Award Winners



Annually, the Greater Burlington Partnership has the privilege of honoring numerous individuals, organizations, and businesses at the Annual Dinner. The awards are a tradition of the Chamber of Commerce that began in 1965 with the top honor of the Emmy Award.

1. 2023 Emmy Award: Gretchen Miller
2. Chairman's Greatest Economic Development Impact: Western Smokehouse Partners, LLC
3. Young Professional of the Year: Paige Tennison
4. Business Person of the Year: TJ Widbin
5. 2023 Des Moines County Entrepreneur Competition: Anna, Kayla, and Taylor Marino, Taste & Seek

6. Project of the Year: FunCity Courts
7. Best Renovation: The Busted Cup Brewhouse and the Downtown Distinction: Brandon and Kathy Bentz
8. Champion of Hidden Talent: Great River Health
9. Community Impact: Southeast Iowa Builders Association, Build My Future
10. Chairman's Award: Stephanie Kozlowski

Congratulations again to all award winners. Thank you for helping make this community a great place to live, work and play.

Chamber of Commerce members were emailed the 2024 Member Satisfaction Survey in the month of February. This survey has provided insightful and valuable feedback from members on the value of Chamber services and programs. It is important that we ask and engage members, so members know how much their annual investment is valued and appreciated. It is also a barometer to glean what is working for our members and what needs to be improved.

Stay tuned for results in the April edition of The Partnership Newsletter.

SOUTHEAST IOWA DAYS - RECAP

Get Your Business Noticed



Approximately 110 delegates took part in the 2024 Southeast Iowa Days event in Des Moines on February 7 and 8. The delegates consisted of Chamber of Commerce leaders, Economic Development professionals, City officials, business owners, and other interested parties from six counties (Des Moines, Henry, Lee, Louisa, Jefferson, and Wapello). Representatives from Fairfield and Ottumwa joined the delegation for the first time.

In addition to personally speaking with legislators during the Legislative Reception, the group listened and asked questions from the following state officials:

Jessi McQuerrey & Brad Hartkopf – Iowa Association of Business & Industry (ABI)

Debi Durham – Iowa Economic Development Authority

Amy Zeigler – Iowa Tourism Office

Attorney General Brenna Bird

Beth Townsend – Iowa Workforce Development

Bill Menner – Iowa Rural Development Council

Bob Younie – Iowa Department of Transportation

Members of the Greater Burlington Leadership Class took a tour of the State Capitol and Dome, and the delegation shared a group photo with Governor Kim Reynolds and Lt. Governor Adam Gregg.

CHAMBER OF COMMERCE FRIDAY FORUM

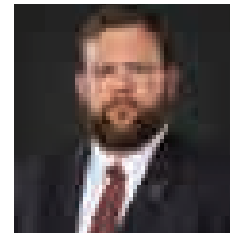
March 8 at 8 AM

GREATER BURLINGTON PARTNERSHIP WINEGARD BOARD ROOM OR VIRTUAL

Chamber members are invited to join the conversation with State Representatives Taylor Collins and Matthew Rinker and State Senators Mark Lofgren and Jeff Reichman.



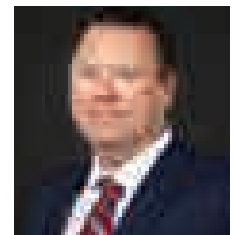
Representative
Taylor Collins



Representative
Matt Rinker

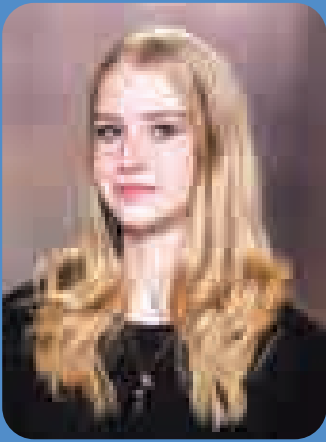


Senator
Mark Lofgren



Senator
Jeff Reichman

Members can watch live online, but it is even better to join in person in the Winegard Room at the Greater Burlington Partnership offices. The Government Relations Committee moderates each session and engages the guests on hot topics regarding community and business focused issues. Chamber of Commerce members are invited to join the discussion in person or online. Anyone who has a passion for government affairs and advocacy is welcomed and participation is appreciated.



MEET ADDISON BROWN

My name is Addison Brown, but I am known in Burlington as, "Downtown Addie Brown." I am twenty-one years old, and I am currently attending Southeastern Community College in West Burlington, IA. I am majoring in interactive and social media marketing. In the future I would like to have my own travel marketing business. It has always been a dream of mine to explore the world and learn about all the various kinds of culture and ways of life that other people experience. I want to share my knowledge about the world, with the world. I am excited to be interning at The Greater Burlington Partnership because I will learn a lot about all the aspects that go into marketing, and I will get to be more involved in my community. I am looking forward to working on projects for local businesses and events!

COMMUNITY PARTNERSHIP

2024 Small Business Awards

COMMUNITY PARTNERSHIP



Titan Broadcasting & Digital Group winner of the 2023 Small Business of the Year Award

The Small Business Breakfast event celebrates all things small business during Small Business Month in May. This year the Greater Burlington Partnership is awarding two awards to recognize and celebrate the achievements of local entrepreneurs within the community. Traditionally the event recognizes the winner of the Small Business of the Year Award, but in an effort to champion all types of small business this year will introduce the Micro Business of the Year Award as well. Small businesses are defined as having 11 - 40 employees, and micro businesses having 10 or fewer employees.

Submit your nominations now by scanning the QR code or visiting GreaterBurlington.com/nominate.



BUSINESS after HOURS

Great River Entertainment, LLC - FunCity Courts
3001 Winegard Dr, Burlington | March 14, 5 - 7 PM

Join Chamber of Commerce member businesses to build your network at Business After Hours and grow your business!





The Southeast Iowa Regional STEM Festival occurred on February 10 at Southeastern Community College with over 600 participants! Grow Greater Burlington is proud to partner with Southeastern Community College, Lee County Economic Development Group, Mount Pleasant Area Chamber of Commerce, and the Southeast Iowa STEM region to bring this incredible event to the community. The festival was a resounding success, bringing together over 20 exhibitors from local businesses, organizations, and manufacturers to showcase their contributions to STEM education.

Notable Exhibitors:

- | | |
|--|--|
| <ol style="list-style-type: none"> 1. Henry County Conservation Department 2. IBEW Local 13 3. Burlington Community High School CTE Department 4. Southeastern Community College's Kidtek Program 5. PrintGroup USA 6. Iowa State University Extension and Outreach, Des Moines County 7. Iowa Flood Center 8. Lee County Conservation 9. Burlington Public Library 10. Carl A. Nelson & Company 11. Iowa Motor Truck Association 12. The Iowa Children's Museum 13. Civil Air Patrol - Burlington Flight 14. Girl Scouts of Eastern Iowa and Western Illinois | <ol style="list-style-type: none"> 15. Great River Health 16. Southeastern Community College CAD Department 17. University of Iowa College of Education Makerspace 18. IowaWORKS 19. Scouts BSA 20. Silgan Containers 21. Great River Health 22. Burlington Fire Department 23. Iron Workers 577 24. SCC Health Programs 25. SEIRMC Radiology 26. SEIRMC Nursing and Respiratory Care 27. Iowa Corn - Biofuels 28. Huffman Welding & Machine, Inc. |
|--|--|

The STEM Festival provided students with an immersive experience, allowing them to engage with hands-on exhibits and discover the fascinating aspects of STEM fields in the community. The presence of local businesses and organizations not only enriched the event but also showcased the myriad career paths available in STEM, serving as an inspiration to the next generation of innovators. Gratitude is extended to all exhibitors, volunteers, and attendees whose collective efforts contributed to the success of this event. Their dedication to fostering STEM education in the community is truly commendable.

Stay tuned for more exciting events and initiatives as the organization continues to support and promote STEM education in the region. To be an exhibitor for next year, contact Telisha Fedele at tfedele@greaterburlington.com.



ENTREPRENEUR COMPETITION AND THE WINNER IS...

The 2023 Winner of the Entrepreneur competition was named at the Annual Dinner. Three sisters put together the winning plan and look forward to opening “Taste & Seek” by the Fall of 2024 in the former Schramm building in beautiful Downtown Burlington. Anna, Kayla and Taylor Marino have hundreds of hours of research poured into not only their business plan, but in the products they will be offering once open. Their idea was born out of health issues in their life that made for some dietary restrictions that really limited their choices for all the things they loved to eat. Due to this, they went to work researching alternatives that allowed them to enjoy their food – really yummy food – but eliminated the gluten, dairy and allergens that caused them so many problems.

Taste & Seek will offer both traditional cakes, cookies and snacks, but also those that are 100% gluten, dairy and allergen free. This will be accomplished by having two completely separate industrial kitchens to avoid any chance that there is cross contamination. They will prepare orders for walk-in, as well as for parties, gatherings or other catered events.

These three ladies also have a passion to offer a selection of cards, stationary, journals, bibles, artwork and apparel that will cater to the faith community in the region. Their faith journey is an important part of who they are and how they got to this point in business, and they look forward to offering that to the community as well.

It is worth noting that Anna, Kayla, and Taylor are the granddaughters of the late Bob Brueck who was a passionate champion for decades in the revitalization of our wonderful Downtown District. His legacy and passion live on through these young ladies as they strike out together in business.

They will receive up to \$10,000 in financial reimbursements for investments made in their business operations and building. It’s happening! We welcome and congratulate Taste & Seek.

TELISHA FEDELE GRADUATES FROM U.S. CHAMBER FOUNDATION EDUCATION AND WORKFORCE FELLOWSHIP PROGRAM



Fellowship Provides State and Local Business Leaders with Opportunities to Engage Nationally on Critical Education and Workforce Issues

WASHINGTON, D.C. – On Friday, January 26, Telisha Fedele, Talent Development Program Manager of the Greater Burlington Partnership, graduated from the eighth cohort of its premier business leadership program. The Business Leads Fellowship Program trains and equips leaders from state and local chambers of commerce, economic development agencies, and trade associations with resources, access to experts, and a network of peers to build their capacity to address the most pressing education and workforce challenges.

Upon reflecting on her experience, Fedele commented that, “In my journey of continuous learning, the U.S. Chamber of Commerce’s Business Leads Fellowship Program stands as the epitome of transformative professional development. Over the past six months, I’ve garnered more knowledge and practical insights from this program than any other professional development training I have undergone in the past. The unique opportunity to connect and collaborate with professionals from various Chambers has been an invaluable aspect of this program, leaving an indelible mark on my growth. Gratitude fills my heart for this unparalleled learning experience, a testament to the program’s exceptional value in fostering both personal and professional development.”

Upon graduation, Business Leads Fellows join the U.S. Chamber of Commerce Foundation’s dedicated network of over 300 chambers of commerce and statewide associations from around the nation who regularly engage on education and workforce initiatives.

EMPOWERING LIVES, BUILDING BRIDGES: DODGING POVERTY DODGEBALL TOURNAMENT

Burlington Leadership Class of 2023-2024 would like to introduce to you a driving force behind Building Bridges: Mona Ash.

Mona, Director of Building Bridges, brings a wealth of experience and a passion for creating positive change within our community.

What does Burlington Building Bridges do for the community?

“It does a lot. Community. Coming together to help under-resourced families, our neighbors, build a sustainable life,” Mona said.

At the core of Burlington Building Bridges is the belief in the power of the community to come together to support one another. Building Bridges empowers under-resourced families by providing tools, networking opportunities, social capital, and connections to those already living sustainably. Breaking down barriers and providing accessible resources are essential elements of Burlington Building Bridges.

As stated by Mona, “A single mom doesn’t have time to go to 14 different places after she worked a 12-hour day. We bring the resources to them to help those struggling with poverty.”

**DODGING POVERTY DODGEBALL TOURNAMENT:
DATE: APRIL 13 | LOCATION: FUNCITY COURTS**

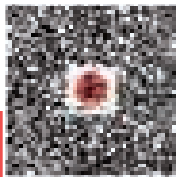
The Greater Burlington Leadership Class of 2023-2024 is hosting Dodging Poverty, a dodgeball tournament aimed at raising \$10,000 to support Burlington Building Bridges. Teams of 6-8 players, grouped by age, will engage in best-of-three mini-matches, with prizes awarded to winners in each bracket.

How Your Support Makes a Difference:

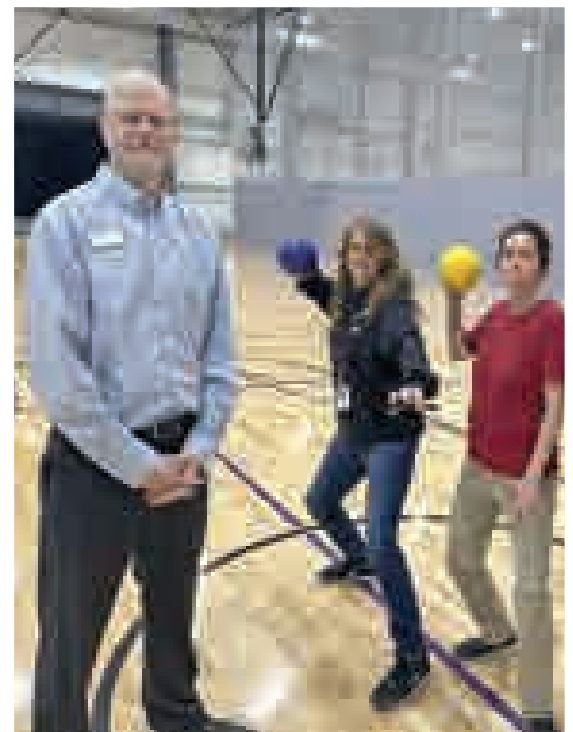
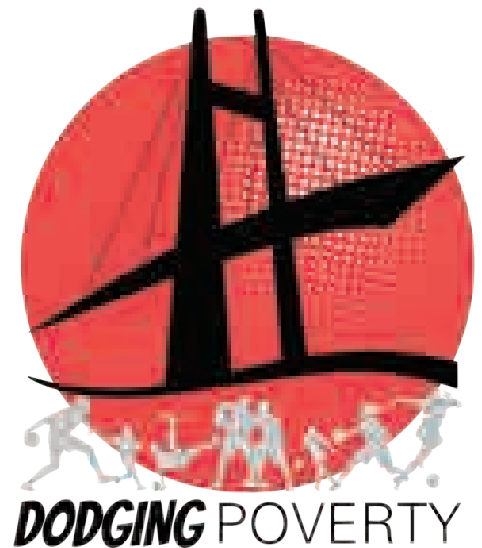
“Because it’s going to go to our benevolence (fund) and our community closet — which serves families, individuals, disabled folks, children — it would mean a lot.” Mona said. Your potential donation and participation in the Dodging Poverty dodgeball tournament will directly impact Building Bridges’ benevolence fund and community closet. These resources provide basic and urgent needs, offer scholarships for kids, and help individuals access extra training for better opportunities. This safety net is crucial for families transitioning off social services, ensuring they have the support to build a better life.

GET INVOLVED: GreaterBurlington.com/DodgingPoverty

For more details, contact Chris Gram at cgram@greaterburlington.com or call 319-208-0045



SCAN HERE



SPRING EVENTS IN DOWNTOWN BURLINGTON

It's Happening in Downtown Burlington all spring! The Spring Open House on April 7 will provide shoppers the opportunity to check out all the new trends for the 2024 Season. In addition, eateries and drinkeries will have their new food menus ready. It will be a perfect excuse to shake off the winter weather and get some exercise while exploring the Downtown District. Attendees will even be able to register for \$750 in Downtown Dollars!

Spring is in the air and with it heralds the Jefferson Street Farmers Market, a seasonal open-air market providing fresh and local produce from the tri-states area. This fun street market will be full of entertainment, food, and activities. The market will feature hand crafted products and local baked goods as well as live entertainment every week and activities for children and all ages.

Make plans to come down to the Jefferson Street Farmers Market every Thursday, May 2 - September 27, to pick up produce for the week – and be sure to linger for the tasty street food, entertainment, and to stroll around the beautiful streets of Downtown Burlington.

MARK YOUR CALENDARS, FRIDAY JULY 19 TO KICK OFF A VERY VINTAGE MARKET AT A VERY VINTAGE NIGHT OUT. AND THEN SATURDAY, JULY 20, A VERY VINTAGE MARKET IS BACK!

A Very Vintage Night Out is a kick-off party to the highly anticipated A Very Vintage Market. This event is an opportunity to enjoy drink specials, get a sneak peek of the market, and discover favorite vendors before the main event. With live music and a vibrant atmosphere, do not miss out on this unforgettable night!

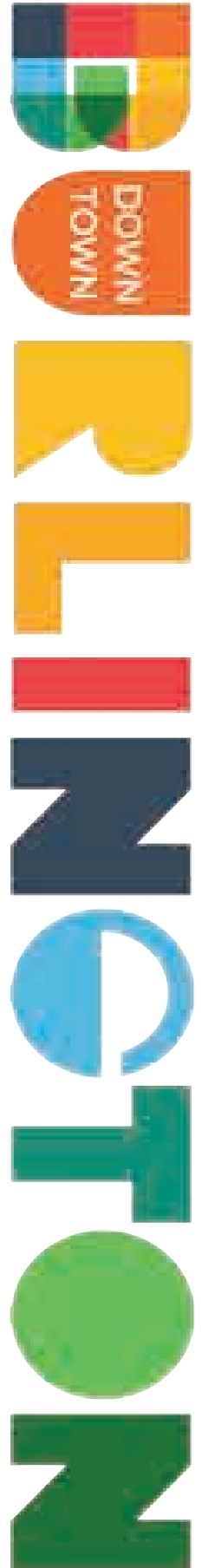
A Very Vintage Market will be held July 20 from 9 AM - 4 PM and admission is FREE! This annual one-day extravaganza is a day of discovery and fun, traditionally with more than 10,000 people in attendance. This outdoor event takes place in the streets of historic Downtown Burlington with thousands of people flocking to shop for antiques, vintage décor, repurposed, re-imagined, and up-cycled items, as well as handcrafted goods, architectural salvage, and primitive and farmhouse accents.

Local food will be a huge attraction with this event too! Food Truck row will be a site where attendees can grab refreshments or a meal, in addition to over 20 eateries and drinkeries in Downtown Burlington!

SPRING OPEN HOUSE APRIL 7, 10 - 4 PM

It's Happening in Downtown Burlington this spring! The Spring Open House on April 7 will give shoppers the opportunity to view new trends and try new foods with eateries and drinkeries showing off their new food and drink menus.

Attendees will also be able to register for up to \$750 in Downtown Dollars! Everyone looks forward to Spring weather and exploring the Downtown District during this fun shopping event.



TO THOSE MAKING A DIFFERENCE

Thank you to our members below for renewing their membership for 2024 and providing the resources to accomplish the ongoing goals of the Chamber of Commerce.

3E Electrical Engineering and Equipment Co.
ABC Fire Extinguisher Inc.
Access Energy Cooperative
Accounting Professionals of Burlington, Inc.
Acuity Financial
Addington Place of Burlington
Adobe
Advanced Home Health Care
Afnitas
Alcohol & Drug Dependency Service of SE Iowa
Aldo Leopold Pheasants Forever Chapter 271
Allen Blasting and Coating, Inc.
Allgood Animal Hospital
Alliant Energy
Alter Metal Recycling
Altorfer Rents
American Eyecare
American Ordnance
America's Car-Mart of Burlington
Ameriprise Financial
Anderson, Roberts, Porth, Wallace,
Stewart & Werner LLP
Appleberry Orchard
Arnold Refrigeration, Inc.
Art Center of Burlington
Aspelmeier, Fisch, Power, Engberg &
Helling, P.L.C.
BANK
Bark & Play Daycare and Suites
Barking Dog Promotions
Barn on the Ridge
Beames Welding & Repair, Inc.
Becker's Jewelers & Gemologists
Beckman Heritage Farms LLC
Bel Canto Chorale
Beurico Beauty Supply
Bickel's Cycling & Fitness
Big River Resources, LLC
Bluff Harbor Marina
BNSF Railway
Bob Dodds Insurance Agency
Bobcat of Burlington (Rexco Equipment Db
Bobcat of Burlington)
Borghi USA, Inc.
Brent Slocum Foundation
Brockway Company, Inc.
Brockway Mechanical & Roofing Company, Inc.
Brown's Shoe Fit
Brueck Construction, Inc.
Bruner, Cooper & Zuck, Inc.
Buckingham Strategic Wealth
Buena Vista University
Buff City Soap
Burlington Area Homeless Shelter
Burlington Area YMCA
Burlington Bees Baseball Association
Burlington Black Water LLC
Burlington By the Book
Burlington Civic Music Association, Inc.
Burlington Family Eyecare
Burlington Golf Club
Burlington In Bloom
Burlington Jet Stop
Burlington Junction Railway -
Short Line Railroad
Burlington Municipal Band Foundation
Burlington Noon Lions Club
Burlington Notre Dame
Burlington Trailways
Burlington/West Burlington Area
United Way, Inc.
Byrider/CNAC
C.U.R.E. Solutions
Cardon Industries, Inc.
Carl A. Nelson & Company
Carpetland USA
C-CAT, Inc.
CDM Real Estate Services
Century 21 Property Professionals
CFO Systems LLC
Child Care Resource & Referral of
Southeast Iowa
Children's Dental Center of SE IA
City Hope Foundation
City of Burlington
City of West Burlington
Clean Sweep Chimney Care
CNH Industrial America, LLC
COBO USA
Collision Center
Community Action of Southeast Iowa
Community Foundation of Des Moines County
Community Health Centers of Southeastern
Iowa, Inc.
Concordia Wine and Cigars
Connection Bank
Coppes Pest Solutions
CPC Printing & Promotions
Cray Law Firm, PLC
Credit Bureau Services of Iowa
Crossroads RV Park
CSI Ltd
Culligan and Great River Coffee
Danville Community School District
Danville Telecom/iconnectyou
Dave Bessine Electric
David Beckman
Deery Brothers, Inc.
Des Moines County Abstract & Title Co.
Des Moines County Board of Supervisors
Des Moines County Conservation
Des Moines County Emergency
Management Agency
Des Moines County Fair
Des Moines County Heritage Museum
Des Moines County Humane Society
Des Moines County Regional Solid
Waste Commission
Divine Mercy Parish
Dixon's Seamless Gutters, LLC
DMC Democratic Central Committee
DMC Republican Central Committee
Dolores' Resale Shop
Domestic Violence Intervention Program
Douds Stone LLC, Heritage Quarry
Dr. Brad Randolph D.D.S.
Dr. Mark C. Pothitakis D.D.S.
Drake Hardware & Software
Dunn Brothers Coffee
Eastern Iowa Tire
Ed Whitham
Edward Jones - Courtney M Gustafson
Edward Jones - Jon Hart
Edward Jones - Karen Elliott
eEngineering Co.
Employee Benefit Systems
Energyefficient Systems, Inc.
Fareway Food Stores
Farm Bureau Financial Services - Tim Lundgren
Farmers & Merchants Bank & Trust
Farmers Savings Bank
Federal Mogul Ignition LLC,
A Tenneco Group Company
First Christian Church
First Congregational Church
First Interstate Bank
First Presbyterian Church
First United Church of Christ
First United Methodist Church
Flint Cliffs Manufacturing
Foodliner, Inc.
Forefront Dermatology
Frank Millard & Company
Fraternal Order of the Eagles #150
French-Reneker-Associates, Inc.
Friends of Community Field, NPC
FS, Inc.
Fye Excavating, Inc.
George's Lawn Mower, Inc.
Girl Scouts of Eastern Iowa and Western Illinois
Golden Eagle Distributing Co.
Goodwill of the Heartland
Graystone Construction, Inc.
Great Prairie Area Education Agency
Great River Entertainment, LLC
Great River Health
Great Western Supply Co.
Greater Burlington Area Sports Facilities,
FunCity Turf
Grinstead & Associates
Gypsi on Jefferson
H & L Mack Truck Sales Inc.
H & R Block
Hamilton-Walters Detachment
616 Marine Corps League

Happy Joe's of Burlington
 Harmony Bible Church
 Harvest Financial
 Harvestville Farm
 Hazell Agencies
 HealthFirm, LLC
 Heart Song, Inc
 Heartland Packaging Corporation
 Hinterland Dairy Inc.
 Hope Haven, A Division of Imagine
 the Possibilities, Inc.
 Huffman's Farm & Home
 Hutcheson Properties, LLC
 Hy-Vee Food Store #2
 Ideal Ready Mix Company
 Industrial Motors, Inc.
 Industrial Service Corp
 Iowa Fertilizer Company
 Iowa State University Extension and Outreach,
 Des Moines County
 IowaWORKS Mississippi Valley
 Iris City Cleaners & Laundering Co.
 ITC Midwest
 J & M Displays, Inc.
 Jeffrey & Joyce Taeger
 Jerilyn Horn Kitchen & Bath Design Co.
 Jerry's Main Lunch
 Jet Air, Inc.
 Jimmy John's
 Jim's Lock & Safe, Inc.
 Jolin Media
 Jonescapes
 Junior Achievement of the Heartland, Inc.
 Kempker's True Value and Rental
 Kenny's Roller Ranch & Rec Center
 Kevin Moore Professional Carpentry
 Keystone Home
 KimAnne Photography
 King Kleen LLC
 Kiwanis
 Klingner and Associates, P.C.
 Kozlowski Law Group, LLC
 KPI Concepts, LLC
 KS Massage & Wellness
 La Boheme
 Larry Rheinschmidt Jr.
 Legacy Retirement Solutions, LLC
 LGH, LLC
 Lindon Wines
 LISCO
 Lotus Ranks Digital LLC
 Lunning Chapel, Inc.
 Mann's McDonald's L.C.
 Manpower, Inc.
 Martini's Grille
 McAlister's Deli
 McLaughlin Freight Services, Inc.
 Mediacom
 Mediapolis Community School District
 Meditate Burlington
 Menke & Company
 MFS Mutual Insurance Company
 Midwest Eye Clinic
 Midwest Realty Group, Inc.
 Milestones Area Agency on Aging

Miracle Car Wash
 Mississippi Valley Council,
 Boy Scouts of America
 Mississippi Valley Human Resources
 Mississippi Valley Veterans' Memorial, Inc.
 Mobil 1 Lube Express Burlington Prolube
 Modern Welding Company of Iowa, Inc.
 Mohrfeld Electric
 MTC Technologies
 Myers Construction, Inc.
 Napoli Pizza and Restaurant
 Nature's Corner, Inc.
 Nick's Cycling & Fitness
 Norris Asphalt Paving Co., LC
 Northwestern Mutual
 Nurse at Home
 Optima Life Services
 Optimist Club of Burlington/West Burlington
 Parrott Farms, Inc.
 Peck Properties, LLC
 Pierson Inc.
 Pilot Grove Savings Bank
 Pizza Ranch
 Players Workshop
 Ploeger Recruiting Services
 Preferred Pet Containment
 Preservation Station | Heritage Trust
 Pritchard Broadcasting (KDMG, KKMI, WQKQ,
 KHDK, KBUR, KBKB AM Radio Stations)
 Prugh Funeral Service
 QCI Thermal Systems
 QPS Employment Group
 RE/MAX Real Estate Specialists, Inc
 Ready Golf LLC
 Record Securities
 Reid's Landscapes & Turf, Inc.
 Reif Oil Company
 Reliable Pest Solutions
 Renewal by Andersen
 Rheinschmidt's Flooring, LLC
 Ritter's Landscaping, Home & Garden Center
 River Basin Publications, LLC
 Robberts & Kirkman, L.L.L.P.
 Roberts Tire Center
 Rock Valley Physical Therapy
 Royal Printing
 Ruhl&Ruhl Realtors
 Ryan Harvey State Farm
 Salon West, Inc.
 Saphalta Services Global LLC
 Sawyer Door
 Schlueter's Auto Service
 ServiceMaster Cleaning & Restoration
 Serving It Safe with Ann LLC
 SERVPRO of Burlington
 SG Construction
 Shearer's Snacks
 Sherwood Company, Inc.
 Shottenkirk Superstore
 Silgan Containers
 Smile Shoppe, Dr. Amy Groeltz, DDS, FAGD
 Snake Alley Inn, LLC
 Snyder & Associates, Inc.
 Southeast Iowa Builders Association
 Southeast Iowa Regional Airport Authority

Southeast Iowa Regional Planning Commission
 Southeast Iowa Symphony Orchestra
 Southeast Soccer Academy
 Southeastern Community College
 Southern Airways Express
 Spirit Hollow
 Standard of Beaverdale
 State Farm Insurance - John Korschgen Agency
 Sterzing Food Company
 Styltique
 Subway
 Summer Street Animal Clinic
 Taco John's
 Taeger Electric
 TAG Communications, Inc.
 TDT CPAs and Advisors
 Team Staffing Solutions, Inc.
 Temp Associates
 Tenderfoot Carpets, L.P.
 The Broadway Bar & Grill
 The Buffalo Tavern
 The Capitol
 The Collective Food Hub
 The Drake, LLC
 The Hawk Eye
 The Legacy Theater
 The Medium Art Store
 The Outpost Bar & Grill
 The Salvation Army Community Center
 & Family Store
 The Sherwin-Williams Company
 The Views of Burlington (dba Oakview Nursing
 & Rehabilitation)
 The Views of Burlington (dba Ridgeview
 Assisted Living)
 Therapy Group, Inc. Counseling Services
 Thyme & Spice Company
 Titan Broadcasting & Digital Group 101.7 The
 Bull KBKB-FM and The New Mix 107.3 KGRS
 TK Industries
 Town Square Publications, LLC
 Traces Boutique
 Tractor Supply Co
 Transitions DMC
 TriOak Foods, LLC
 U.S. Bank, N.A.
 U.S. Gypsum
 Valley Distribution Corporation
 Vernon Promotions
 Weird Harold's
 Wemiga Waste (Floyd's E-Z Way Container
 Service, Inc.)
 Wendy's
 West Burlington Independent School District
 Western Smokehouse Partners, LLC
 Westland Mall
 Wilson Rentals
 Window World of Davenport, Inc.
 World Insurance Associates, LLC
 WQAD
 Yash Management
 Young House Family Services, Inc.
 Zaiser's Landscaping, Florist & Greenhouse

Those listed are renewals
 received by February 15.
 (Parent Company listed Only)

WELCOME NEW MEMBERS

Please welcome these new Chamber of Commerce members by sending an email, liking their Facebook page or visiting their website. Even better, stop by to introduce yourself, exchange business cards and help grow their network as well as your own!

Made by Mallory bakery, LLC

MadeByMallory.us , West Burlington

Mallory Kienast, Owner, 319-850-3725, contact@madebymallory.us

Southeast Iowa's premier bespoke bakery, Made by Mallory bakery, is situated in West Burlington, specializing in celebration cakes, macarons & gourmet desserts!

Premier Physical Therapy of Iowa

PremierPTIowa.com, 2750 Mount Pleasant St Ste 104

Scott Thoma, Owner – Director of Operations, 319-209-2292

scott@premierptiowa.com

Helping you back to the activities you love. Are you suffering from an injury, a recent surgery, or a chronic ailment that prevents you from fully enjoying life? Let the staff at Premier Physical Therapy help you feel better so you can resume your favorite activities. We are locally owned with professional support staff who live and work in your community. With over 20 years of combined experience, we are the PREMIER physical therapy clinic for members of Burlington, West Burlington, and surrounding communities.

KCPS 1150 AM

KCPSRadio.com, PO Box 100, West Burlington

John Kemp, Sales Representative, 319-753-5277, djohn.kcps@aol.com

Talk radio KCPS 1150AM is a media company dedicated to opportunity.

People have the opportunity to question, discuss and comment on important issues on-air and local businesses have the opportunity to promote and advertise their products and services to a large local audience.

Reign's Legacy Dog Grooming

ReignsLegacyDogGrooming.com, 15765 Teal Rd, Sperry

Kori Thordsen, Owner/Groomer, 319-750-3879

reignslegacydoggrooming@gmail.com

Kori offers 1 on 1 grooming, so your dog is the only one in her shop during the appointment. Each groom is customized for the dog's skin and coat needs. She grooms dogs of all sizes and specializes in giant breeds and double coats.

RIBBON CUTTINGS & CELEBRATORY EVENTS



**NIGHT CAP
GRAND OPENING**



**ANY WEAR APPAREL
NEW LOCATION**

PIONEERING THE FUTURE: GROW GREATER BURLINGTON'S CONTINUED INNOVATION IN VIRTUAL REALITY CAREER EXPLORATION IN SCHOOLS



Prepare to be captivated by the latest breakthrough in education as we unveil the renewed collaboration between Grow Greater Burlington and Transfr Inc. This partnership reaffirms the commitment to providing cutting-edge virtual reality career exploration simulations to Des Moines County Schools for the upcoming 2024 - 2025 school year.

With an initial arsenal of five cutting-edge virtual reality headsets, the goal is to double this number, ensuring an expanded reach that empowers more students to actively immerse themselves in transformative career simulations. Since its inception in the spring of 2023, this groundbreaking program has not only gained traction but has become a resounding success, echoing the overwhelming demand expressed by both students and educators through insightful surveys. Over 300 students in grades 8 - 12 have experienced these virtual reality career exploration simulations. Responding to the pressing need for dynamic

learning environments and driven by a commitment to meet the evolving needs of the local community, the Greater Burlington Partnership proudly extends its facilitation of this pioneering career exploration initiative. Standing resolute in the dedication to building and sustaining this project, recognizing its pivotal role in shaping the future workforce of the region.

Business leaders are cordially invited to explore the boundless possibilities that this career exploration technology presents to their industries. Whether fueled by curiosity about its relevance to their fields or a desire to invest in the program and support the emerging workforce, interested parties are encouraged to reach out to Telisha Fedele, Talent Development Program Manager. Telisha can be reached at tfedele@greaterburlington.com and eagerly awaits to provide detailed insights and address any inquiries.

Visit [Transfrinc.com](https://www.transfrinc.com) for more information.

IOWA STATE UNIVERSITY
Extension and Outreach

BUILDING A #STRONGIOWA

Des Moines County Extension
1700 W Mt Pleasant St, West Burlington, IA 52655
(319) 671-7165
www.extension.iastate.edu/desmoines

BECKER'S
JEWELRY
Handcrafted in Burlington

Transfr Inc.®
Meditate Burlington

Discover how Transfr Inc.® Meditate Burlington can transform your personal and professional life.

Discover why this is an effective business strategy.

Why you are not getting the results you want in your business or personal life.

What happens during the program?

For more information, visit www.transfrinc.com

MARCH *march* EVENTS

February 29 - March 27 – March Gallery Show: James Walker Henry Art Center of Burlington, hours vary BTownArt.com

1 – Friday Night Art Hop Art Center of Burlington, 6 PM BTownArt.com

2 – Des Moines County Master Gardeners Winter Seminar Southeastern Community College 9 AM - 3 PM facebook.com/dmextension

2 – Hotel Desperado Capitol Performing Arts Center, 7:30 PM LiveAtTheCapitol.com

3 – Tequila Sunrise Farmer's on Jefferson, 1 - 4 PM facebook.com/100057375282600

4 – Mindfully Me Burlington Public Library, 7 PM Burlington.lib.ia.us

5, 12, 19 & 26 – Miss Lily's Story Time Des Moines County Historical Society, 10 AM facebook.com/DMCHistSoc

5 – Drop-In Tech Help Burlington Public Library, 3 - 4 PM Burlington.lib.ia.us

6, 13, 20 & 27 – Historic Newspaper Readings Des Moines County Historical Society, 10 AM facebook.com/DMCHistSoc

7 - 9 – Burlington Snowbull Memorial Auditorium, times vary BurlingtonSnowbull.com

8 – Friday Forum Greater Burlington Partnership 8 - 9 AM, Zoom Optional GreaterBurlington.com

9 – Hamilton-Walters Marine Corps League Ham & Bean Dinner Iowa National Guard/Army Reserve Center Middletown, 5 - 7:30 PM facebook.com/HWMCL

9 – Bee Gees Gold Legacy Theater, Carthage, IL, 7 PM TheLegacyTheater.com

10 – Take 3 Capitol Performing Arts Center, 7:30 PM LiveAtTheCapitol.com

14 – World Travelogue Series: Mediterranean Dream 1:30 and 7:30 PM LiveAtTheCapitol.com

14 – Business After Hours Great River Entertainment FunCity Courts, 5 - 7 PM GreaterBurlington.com

15 – Friday Night Art Hop Art Center of Burlington, 6 PM BTownArt.com

15 – Chad Elliot & Bronson Herrmuth Capitol Performing Arts Center, 7:30 PM LiveAtTheCapitol.com

16 – Shamrock Shuffle Crapo Park, 10 AM facebook.com/burlingtonshamrockshuffle

20 – Burlington Lunchtime Chamber Music Series First United Methodist Church, 12:15 PM facebook.com/burlingtonlunchtimechambermusicseries

21 – Hike A Park: Big Hollow Big Hollow Creek Recreation Area, 4 PM DMCConservation.com

21 – Costaki Economopoulos Capitol Performing Arts Center, 7:30 PM LiveAtTheCapitol.com

23 – Tales of the Symphony Capitol Performing Arts Center, 7:30 PM SEISO.us

24 – Midwest Magic vs BPD Burlington Community High School, 4 PM facebook.com/SoutheastIowaMidwestMagic

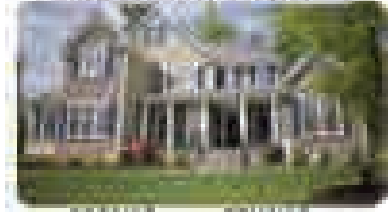
27 – Shepherd's Table Free Community Meal First Congregational Church, 4:30 PM FCCBurlington.org

March 28 - April 25 – April Gallery Show: Amanda Weygand Zehr Art Center of Burlington, hours vary BTownArt.com

View more events at GreaterBurlington.com/Events

STANDARD OF BEAVERDALE

WHAT ARE YOU DREAMING OF? LET US HELP YOU BUILD IT.



- ROOFING • FENCING
- MATERIALS • PLUMBING
- WINDOWS • HARDWARE
- DOORS • ELECTRICAL
- SIDING • APPLIANCES

WE SUPPLY THE BEST PRODUCTS TO HELP YOU BUILD THE HOME OF YOUR DREAMS

WE CARRY YOUR FAVORITE BRANDS

Now including the largest selection of Carhartt in Southeast Iowa

carhartt

FOLLOW US ON 319-754-5174

STANDARD OF BEAVERDALE

11194 TWIN PONDS DRIVE WEST BURLINGTON, IA 52655

Access Energy
1-866-242-4232

SILGAN
BEST IN CLASS

RE/MAX REAL ESTATE SPECIALISTS, INC.
LOCALLY OWNED, NATIONALLY KNOWN
SOLD FOR SALE

Big River Resources
Highest Ethanol Purity
BigRiverResources.com
ETHANOL
Proudly Made in The U.S.A.
CLEANER BURNING FUEL
LOOK FOR THE ENVIRONMENT



March 30 marks the two-year anniversary of All Things Greater Burlington. Over the course of 50 episodes, Burlington/West Burlington Area Chamber of Commerce Executive Director Steven Brody has engaged in informational and educational conversations with business owners, public officials, community leaders, and Chamber of Commerce award winners. The discussions offer insight and information for the listener to have a greater appreciation for the work that the guest is involved in. The podcast further illustrates the diversity of talent in Greater Burlington.

The podcast and its episodes can be heard on Greater Burlington.com, Amazon Music, Google Podcasts, Spotify, Apple Podcasts, iHeart Radio, Castbox, and Stitcher. Binge listening is highly recommended to get caught up!

Make sure to subscribe to stay informed when new episodes become available.

Have a suggestion on who you would like us to interview? Please contact Steven at sbrody@greaterburlington.com.

MARCH GALLERY SHOW: JAMES WALKER HENRY

February 29 - March 27

Burlington's own James Walker Henry returns to the Art Center this month with Enigma.

Meet the artist behind this intriguing show during the artist reception from 5 - 8 PM on March 1. Both the reception and the month-long show are free and open to the public.

For more information, follow the Art Center of Burlington on Facebook or visit: BTownArt.com

BEE GEES GOLD

March 9, 7 - 9 PM, The Legacy Theater

Bee Gees Gold stars John Acosta as Barry Gibb. Acosta has performed in Bee Gees tributes all over the world for over 14-years. The Bee Gees Gold tribute is the ultimate salute and experience of seeing the Bee Gees in their prime. Backed by a live band, Bee Gees Gold recreates the look and sound of the Bee Gees from the '60s to the late '70s, with the unique falsettos that made them legends.

Tickets are \$55 on the Legacy Theater website and at the theater box office. TheLegacyTheater.com.

SHAMROCK SHUFFLE

March 16, 10 - 11 AM

Join the Burlington Parks & Recreation Department and the Burlington Police Department on March 16 in Crapo Park for a 5k color fun run!

SCC FOUNDATION SCHOLARSHIP DONOR APPRECIATION RECEPTION

April 19, 9 - 11 AM

For more information, Contact Val Giannettino at vgiannettino@scciowa.edu.



MEMBER SPOTLIGHT

Submit member information, to Brenda Levitt at blevitt@greaterburlington.com

ADDINGTON PLACE OF BURLINGTON
Assisted Living & Memory Care

(319) 752-0260
www.AddingtonPlaceofBurlington.com
2271 West Ave., Burlington, IA

DMC *Waste Solutions*

Area Recyclers

Recycling Center | Area Recyclers

DMC Landfill | Recycled If You Store | Electronic Waste

Call the recycling spot, go to home with your recycling

319-753-8126 • DMCWaste.org

Like and Follow AREA RECYCLERS on Facebook

DMC@WDC | 1818 W Burlington Ave, Burlington, IA 52601

HENNY'S ROLLER RANCH & REC CENTER

- SKATING • PARTIES • GOLF
- BATTING CAGES
- BASKETBALL BANKSHOT

319-752-2043

HENNYSROLLERRANCH.COM
1883 Taylor Avenue | Burlington, IA 52601



RiverPark Place
 610 N 4th St, Ste 200
 Burlington, Iowa 52601
 319-752-6365
 info@greaterburlington.com
 GreaterBurlington.com



With Main Street Iowa and the Iowa Economic Development Authority, Downtown Partners, Inc. presents the Open 4 Business Competition for a for-profit business located in the Main Street district. Each of the state's Main Street organizations can nominate one business. If you have been in business since May 1, 2023 and are either currently or planning to be located in Downtown Burlington, you qualify! The Beancounter Coffeehouse & Drinkery was awarded \$15,500 for their addition of Boba Tea in 2022.

A complete application must be submitted by April 1. Downtown Partners, Inc. will choose a contestant for the June 12 semifinal judging to compete for a chance at \$8,000. The five finalists will then present their ideas in a statewide contest at the Iowa Downtown Conference on August 5 for up to an additional \$20,000 in funding.

Applicants will be required to complete an online application and submit a three-minute "video pitch" about their business idea.

For more information contact Downtown Partners Main Street Executive Director Amy Moyner at the Greater Burlington Partnership office.



 **GREATER BURLINGTON PARTNERSHIP**

Chamber of Commerce
 Economic Development
 Convention & Visitors Bureau
 Downtown Partners, Inc.

Follow The Partnership

