



THE PARTNERSHIP

GREATER BURLINGTON PARTNERSHIP NEWSLETTER - VOL. 105 NO. 01

those whose generous foresight
make this vision possible.





Dear Members and Friends of the Greater Burlington Partnership,

As we welcome the new year, I am inspired by the sense of possibility and momentum that lies ahead for our region. The start of 2025 marks an opportunity to reflect on the progress we've made together and to set our sights on ambitious goals that will shape the future of Greater Burlington.

In my first few months as CEO, I've had the privilege of meeting with many of you—business leaders, community members, and partners—who are deeply committed to the success of our region. Your insights have been invaluable in helping me understand our community's strengths and aspirations. It's clear that Greater Burlington is a special place, defined by its resilience and collaborative spirit.

Building on this foundation, our focus for 2025 is to drive initiatives that enhance economic growth and improve the quality of life for all. Workforce development remains central to these efforts. In partnership with the Lee County Economic Development Group, we are proud to welcome a new Regional Director of Workforce Innovation. This collaborative role is designed to strengthen partnerships with education and training providers across both counties, ensuring our local workforce is equipped with the skills needed to thrive in a rapidly evolving economy. At the same time, we are focused on attracting new talent to Southeast Iowa, showcasing our region as a vibrant and welcoming place to live and work. This new regional collaboration exemplifies the power of partnership and the transformative potential of working together to achieve shared goals.

In addition to these efforts, we're doubling down on our advocacy at the state and national levels to secure funding for economic development initiatives, transportation and energy infrastructure, and policies that promote quality of life in our communities. By amplifying Greater Burlington's voice, we aim to unlock new opportunities for growth and investment.

As we get off to a "new start," I want to express my gratitude to the incredible staff at the Greater Burlington Partnership. Their dedication and expertise make our work possible, and I'm fortunate to be part of such a talented team. I'm also thankful for the support of our board members and the broader community, whose engagement is the heartbeat of our organization.

I encourage you to join us for our Annual Dinner on Friday, January 24th, as we come together to celebrate our community's achievements and honor the individuals and businesses whose efforts have made Greater Burlington an even better place to call home.

As always, your feedback and involvement are essential to our success. I encourage you to share your ideas. Together, we can turn our shared vision into reality.

Let's encourage each other to "dream" while we are awake! There are SO many possibilities...

Warm regards,
Amy O'Brien
CEO, Greater Burlington Partnership

Partnership Staff



Amy O'Brien
President & CEO
319-208-0043
aobrien@greaterburlington.com



Jeremy Hess
Dir. of Economic Development
319-208-0050
jhess@greaterburlington.com



Amy Moyner
Downtown Partners, Inc.
Exec. Dir. 319-208-0056
amoyner@greaterburlington.com



Chris Gram
Convention & Visitors Bureau
Exec. Dir. 319-208-0045
cgram@greaterburlington.com



Melissa Jones
Chamber of Commerce
Exec. Dir. 319-208-0052
mjones@greaterburlington.com



Dustin Roth
Marketing & Communications
Dir. 319-208-0048
droth@greaterburlington.com



Crystal Jolin
Director of Finance
319-208-0044
cjolin@greaterburlington.com



Telisha Fedele
Regional Director of
Workforce Innovation
319-208-0046
tfedele@greaterburlington.com



Brenda Levitt
Graphic Designer
319-208-0047
blevitt@greaterburlington.com



Mac Holford
Events Manager
319-208-0040
mholford@greaterburlington.com



Pamela Wright
Administrative Assistant
319-208-0042
frontdesk@greaterburlington.com



Kaylea Felland
Convention & Visitors Bureau
Prog. Coord. 319-752-8731
kfelland@greaterburlington.com

SUBSCRIPTIONS: Price is \$24, which is included in annual events fees. Non-members: \$4 per issue. Periodicals postage paid at Burlington, Iowa.
POSTMASTER: The Partnership is published monthly by the Greater Burlington Partnership 610 North 4th Street, Suite 200, Burlington, Iowa 52601.
POSTMASTER: send address changes to Greater Burlington Partnership (USPS 001-692) 610 North 4th Street, Suite 200, Burlington, Iowa 52601.



ON THE COVER

2025 BOARD CHAIRS

Each year the Board of Directors is tasked with setting the policies and goals of the Greater Burlington Partnership. The organization is unique in structure and includes the Chamber of Commerce, Economic Development, Convention & Visitors Bureau, and Downtown Partners, Inc., all under the collective umbrella of the Greater Burlington Partnership. For this community, the collaboration has proven to be an effective and great strategy.

To accomplish this task, each division has a separate Board of Directors, segregated funds, and a unique mission statement guiding their way.

During their one-year term, division Chairs represent the organization at a variety of functions and collectively meet to ensure the organization is running efficiently and effectively. When you have an opportunity, please thank these individuals

for their time and dedication to the organization and the community.

In 2025, the Chairs of the divisions are (from left to right):

- Kathy Bentz, The Busted Cup Brewhouse
Downtown Partners, Inc. Board Chair
- Sara Huston, Great River Entertainment, LLC
Convention & Visitors Bureau Steering Committee Chair
- Tina McCulloch, Big River Resources, LLC
Economic Development Board Chair
- Craig Smith, Sterzing Food Company
Chamber of Commerce Board Chair



Greater Burlington 2025 Visitors Guide

The Convention & Visitors Bureau is thrilled to announce the upcoming release of the 2025 Greater Burlington Visitors Guide. As the region's only publication exclusively dedicated to promoting Greater Burlington as a premier tourism destination, the guide is a must-have for anyone interested in discovering why thousands of visitors are drawn to Des Moines County every year. Whether planning a weekend getaway or uncovering hidden gems, stay tuned to see why the 2025 Visitors Guide is YOUR guide to Greater Burlington.



Mark Your Calendar for the First Friday Forum in January

Greater Burlington Partnership or Virtual, 8 AM

The theme for this forum is Healthcare, a topic critical to our community and state. We are honored to welcome Dr. Mike McCoy as our special guest speaker. Dr. McCoy will provide valuable insights into the healthcare challenges facing Des Moines County, including retaining talent and physicians - one of our legislative priorities for the year.

Following Dr. McCoy's presentation, we will have our local legislators share their perspective, discuss legislative efforts, and engage with Chamber members about their work and hopes for addressing these challenges through policy. Your participation will help foster a productive dialogue and strengthen the connection between our community and state leadership.

Upcoming Forums: February 21 | March 21 | April 18

Stay engaged and join the conversation!

All Chamber of Commerce members are invited to join the discussion in person or listen in online.



2025 Southeast Iowa Days - Des Moines - February 5 & 6

Mark your calendars! Southeast Iowa Days 2025 is your chance to join a delegation of business and community leaders in Des Moines on February 5 and 6. This event provides an exceptional opportunity to discuss Southeast Iowa's legislative priorities and stay updated on key state developments during the 2025 Legislative Session.

Who Should Attend:

Chamber members who are passionate about advocating for pro-business policies and seeking a first-hand experience at the State Capitol.

Cost: \$150 per person, which includes: Access to the luncheon, legislative reception, and a Q&A session on Southeast Iowa's key issues.

Travel and Lodging:

Participants are responsible for their own travel arrangements. For lodging, contact Embassy Suites at 515-244-1700 and mention "Southeast Iowa Days" to access the reserved block of rooms. Be sure to book by January 5 to secure your spot.

For more information and to RSVP, contact Telisha Fedele.



Register for 2025
Southeast Iowa Days

Focusing on the Issues
2025 PUBLIC POLICY GUIDE

2025 Legislative Priorities

The Greater Burlington Partnership is pleased to present its 2025 state Legislative Priorities, developed with valuable input from its members. The organization extends gratitude to all who participated in the Political Action Survey in the fall. Member feedback has played a key role in shaping these priorities, which will guide advocacy efforts on behalf of businesses in the Greater Burlington area.

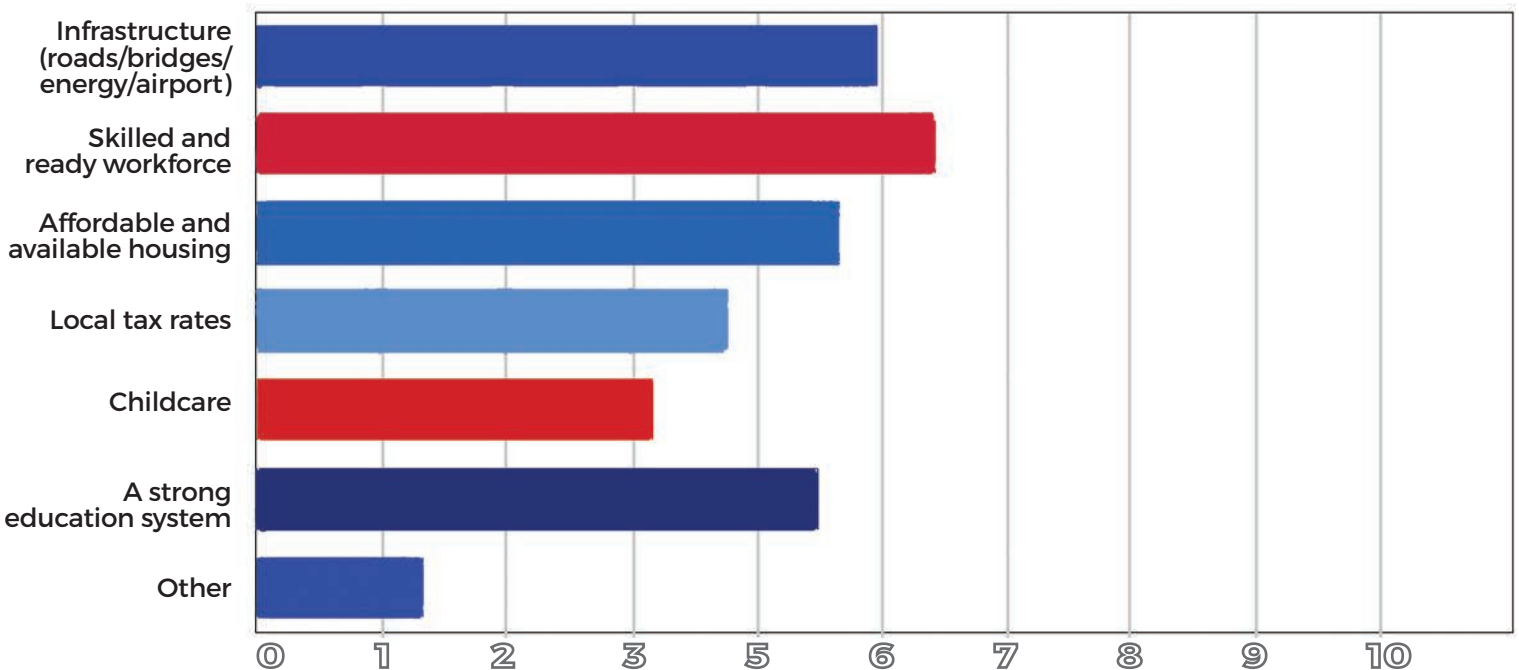
These priorities emphasize crucial areas such as workforce development and talent attraction, infrastructure, housing affordability, and energy resilience. They aim to sustain and enhance the region's thriving business community. The Partnership appreciates the continued engagement and support of its members as it works to represent Southeast Iowa's interests effectively at the state legislature.

Based on the 2024 Government Relations Committee survey, we will focus on these top three priorities:

- *Workforce Retention & Attraction*
- *Housing & Quality of Life*
- *Infrastructure*

** A complete 2025 Public Policy Agenda is available at GreaterBurlington.com.*

Political Action Member Survey Results from Fall 2024





MELISSA JONES

New Executive Director of the Chamber of Commerce

The Greater Burlington Partnership and the Chamber of Commerce are pleased to announce Melissa Jones as the new Executive Director of the Chamber of Commerce beginning January 1. With an impressive track record of dedication and leadership within the organization, Melissa brings a wealth of experience and passion for supporting the Greater Burlington business community.

"I'm excited to step into this new role after spending several months working alongside the incredible team at the Partnership. As someone who has been involved with this organization for many years—as a volunteer, a committee and board member, and most recently as a part-time employee, I've seen the impact this organization has in Greater Burlington. I look forward to continuing to build on that legacy and to working more closely with our local businesses, leaders, and residents. Together, we'll focus on creating even more opportunities for growth, collaboration, and success," stated Melissa Jones.



TELISHA FEDELE

Regional Director of Workforce Innovation

The Greater Burlington Partnership and Lee County Economic Development Group are excited to announce a new partnership with the appointment of Telisha Fedele as the Regional Director of Workforce Innovation. This new role aims to foster collaboration among businesses, educational institutions, entrepreneurs, and community stakeholders to develop innovative solutions that address workforce challenges and opportunities across Des Moines County and Lee County.

"I'm honored and excited to step into the role of Regional Director of Workforce Innovation, where I can help bring Des Moines and Lee Counties closer together through collaboration. A regional approach will unlock the power of partnerships to tackle workforce challenges and develop solutions that benefit everyone," Fedele said. "In Southeast Iowa, when one county wins, we all win. By uniting businesses, educators, and community leaders, we have the chance to build a stronger, more inclusive economy and make our region a place where people are eager to live, work, and thrive. This is the vision I am committed to achieving in this role."

Discover Fabulous **PORTUGAL**

With the Greater Burlington Partnership

Discover breathtaking cityscapes, world-famous cuisine, beautiful beaches, and legendary attractions!



GREATER BURLINGTON PARTNERSHIP

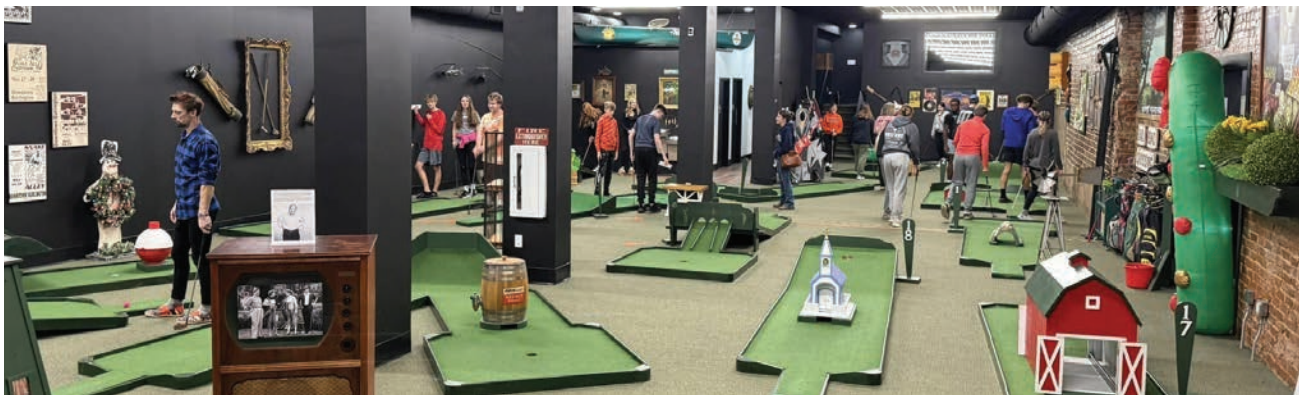
Group lead by
Amy O'Brien
President & CEO

To book or inquire please contact
Amy O'Brien | T: 319-752-6365
E: aobrien@greaterburlington.com

Deadline to Register
JANUARY 7

Scan the QR code for
booking and information or
visit www.GreaterBurlington.com





MINI GOLF: TEE UP FOR THE MINI GOLF CHALLENGE! - MARCH 6

The Downtown Mini Golf Challenge at Burlington Black Water Miniature Golf is a fun and business-friendly event that brings the community together to support the ongoing revitalizations of Downtown Burlington, Iowa. This unique fundraiser offers participants a chance for a friendly game of mini golf, with prizes for the best-performing teams. It's the perfect opportunity for team building and a relaxing break away from the office. Proceeds from the event will be used to enhance public spaces, promote local businesses and continue to fuel the momentum of Burlington's transformation as the Cultural & Entertainment District. **Contact Melissa Jones for more information.**



Vendor applications for the Jefferson Street Farmers Market will be opening soon. The market kicks off in May and runs through September, offering a season full of fresh produce, handmade goods, and local fun. Keep up with the latest news by following the Jefferson Street Farmers Market Facebook page!



=A VERY=

Vintage Market

DOWNTOWN BURLINGTON

A VERY VINTAGE MARKET 2025

Vendor applications for A Very Vintage Market will also be opening soon at GreaterBurlington.com. This much-loved event returns for its 10th annual celebration on Saturday, July 19. Stay tuned for updates by following the A Very Vintage Market Facebook page!

DOWNTOWN DEETS: CONNECTING AND GROWING TOGETHER

Mark your calendar for the first Downtown Deets gathering on February 19 from 8:30 - 9:30 AM! This is your chance to stay informed about all things Downtown Burlington, gain valuable business tips, connect with peers, and share your insights on our community's growth. Let's come together to shape the future of our vibrant Downtown, we hope to see you there! Stay tuned for location. **Contact Amy Moyner with questions.**



It's Happening

GREATER BURLINGTON PARTNERSHIP HOSTS INSPIRING CAREER FAIR FOR LOCAL STUDENTS

The Greater Burlington Partnership proudly hosted the 8th Grade Career Fair on December 18, bringing together students and professionals for an unforgettable experience. The 5th Grade Career Fair on December 16 was cancelled due to fog and late school starts. With the collaboration of Southeastern Community College and the use of their stunning facilities, the events welcomed over 35 speakers from local businesses, agencies, and organizations who generously donated their time to inspire the next generation.

Students from Burlington, West Burlington, Mediapolis, Burlington Notre Dame, and Danville schools had the opportunity to explore a wide variety of career paths through engaging presentations and interactive discussions. The success of the career fair was made possible by the dedication of the speakers, the commitment of the schools and their staff, and the enthusiasm of the students.

A heartfelt thank you to our business community, participating schools, and Southeastern Community College for making these impactful events possible to shape a bright future for our young learners!



2025 Partnership Board Officers

Chamber of Commerce Officers

Chairperson – Craig Smith, Sterzing Food Company
Chairperson-Elect – Kyle Gugeler, Standard of Beaverdale
Treasurer – Jeff Ebbing, Southeastern Community College
Past-Chair – Melinda Bickel, Bickel's Cycling & Fitness

Economic Development Officers

Chairperson - Tina McCulloch, Big River Resources
Chairperson - Elect - Bryan Bross, Klingner & Associates
Treasurer - Gary Hoyer, Great River Entertainment
Past Chairperson - Bob Huffman, Huffman Farm & Home

Convention & Visitors Bureau Officers

Chairperson - Sara Huston, Great River Entertainment, LLC
Past-Chair – Yair Carvajal, Queso's Mexican Bar & Grill

Downtown Partners, Inc. Officers

Chairperson - Kathy Bentz, The Busted Cup Brewhouse
Chairperson - Elect - Stephanie Brakeville, Klingner and Associates, P. C.
Treasurer - Brandon Kipp, Two Rivers Bank & Trust
Past Chairperson - Todd Ackerman, World Insurance Associates LLC

MEET THE NEW LEADERSHIP



Chamber of Commerce

Craig Smith, Sterzing Food Company

Goal: I consider it a great privilege to serve as board chairman in 2025. As incoming chairman, my goal is to bring decades of leadership experience to the board as we integrate new staff with our seasoned team. I am committed to capitalizing on the talent and capabilities of each team member to fulfill our mission: ensuring Greater Burlington becomes a thriving regional hub for commerce, industry, education, healthcare, entertainment, and culture—a great place to live and work.

Why: Burlington has been my hometown for over 60 years, and my entire career has been supported by this region. Over the years, I've developed significant relationships with local people and businesses, learning the value of strong communication. I hope to use my experience to encourage our staff, boards, and the community, through effective communication and becoming a catalyst for change, not a casualty of it.



Economic Development

Tina McCulloch, Big River Resources, LLC

Goal: I am honored to hold the Chairperson position for Grow Greater Burlington for 2025 and am committed to continuing the mission of building meaningful and sustainable growth in our community. My focus is on fostering partnerships, supporting local businesses, and creating opportunities that drive long-term success for the region.

Why: Economic development is more than numbers and policies—it's about people. I'm passionate about following the paths of prior leaders to sustain a vibrant community where businesses can succeed, families can prosper, and opportunities are plentiful for all. I believe in the continued growth and potential of our community to achieve great things, and I know that through collaboration, we can accomplish even more. For me, this role is about leaving a legacy of progress and opportunity, just as others have done before me.



Convention & Visitors Bureau

Sara Huston, Great River Entertainment, LLC

Goal: To position Greater Burlington as a premier destination for tourism by expanding marketing reach with consistent messaging across platforms, fostering the growth of sports tourism through strategic partnerships and event promotion, and advocating for enhanced outdoor recreation amenities to attract a diverse range of visitors and drive economic impact.

Why: This position offers an incredible opportunity to shape initiatives that will highlight our areas unique offerings, attract visitors, and drive economic development. I'm honored to lead this effort and work alongside such talented individuals to create meaningful impact.



Downtown Partners, Inc.

Kathy Bentz, The Busted Cup Brewhouse

Goal: I'm excited to take on the role of leading the 2025 Downtown Partners' board and working with such dedicated people to make Downtown Burlington a more lively and inviting place to eat, drink, shop and enjoy. By continuing to build stronger partnerships between local businesses and community members, I believe we can increase engagement, attract more visitors, and help our downtown continue to grow and thrive.

Why: Since moving to Burlington in 2020, I've become deeply passionate about our community's unique charm, history, and incredible potential. I've witnessed firsthand the growth and transformation our downtown has experienced, and I'm excited to lead the Downtown Partners Inc. board to continue to build on that momentum. By fostering collaboration between businesses and residents, we can create a place where people love to gather—a downtown that feels like home for everyone.



GREATER BURLINGTON LEADERSHIP CLASS EXPLORES HEALTHCARE IN 2024

The Greater Burlington Leadership Class of 2024-2025 spent an insightful morning at Southeast Iowa Regional Medical Center during their Healthcare session. Dr. McCoy, President and CEO of Great River Health, provided an engaging overview of healthcare in 2024, followed by a facility tour and discussions with additional speakers.

A special thank you to Lunning Chapel for sponsoring the session and hosting a lunch-and-learn on after-death care. The session was a tremendous success. Thanks to the valuable contributions of all the speakers. Contact Melissa Jones to sponsor a session for the 25-26 session.



LEADERSHIP 2.0: A STRONG START TO A NEW PROFESSIONAL DEVELOPMENT SERIES

The new Leadership 2.0 program is off to a fantastic start, with the first four sessions focusing on key pillars of effective leadership: Leadership Styles, Recognition, Integrity, and Communication. Each session offered participants actionable insights and tools to enhance their professional growth.

The Greater Burlington Partnership extends gratitude to the class for their grace and flexibility as they fine-tune this new professional development series. Participant feedback has been overwhelmingly positive, with many noting the meaningful content and the value they've gained from each session.

As we continue into 2025, we look forward to building on this solid foundation and watching the impact of Leadership 2.0 grow. Thank you to everyone who has contributed to making this program a success!

TABLES ARE ALMOST SOLD OUT FOR THE 2024 ANNUAL DINNER!

What is the Annual Dinner?

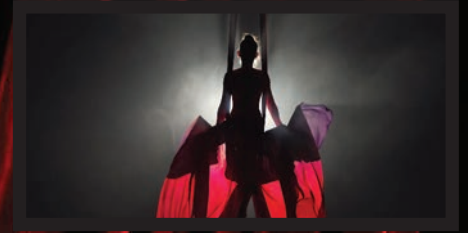
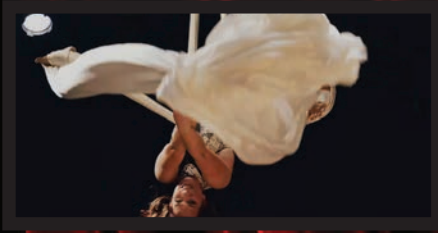
It's an exciting night where 500+ attendees come together and celebrate the accomplishments of 2024 with the announcement of 8 prestigious community awards!

Guests come together with a reception hour, and enjoy premier entertainment featuring three live performers, a plated dinner, live and silent auctions, and an after party.

It's the event of the year that you and your business won't want to miss - message us today to reserve your seat, half table of 4, or table of 8.



JANUARY 24, 2025



Coffee with the Chamber at Midwest Realty Group, LLC.

Start your day with a low-key networking & knowledge event – Coffee with the Chamber. The next edition will be held on

January 28, 8 AM at Midwest Realty Group's welcoming front office area, located at 914 Broadway Street, Suite 3, West Burlington.

This event is perfect for any Chamber member – brand new to experienced historians, new employees and those close to retirement. It offers a valuable opportunity to mingle, exchange ideas, share your story, and learn about local events and the community.

Chamber staff will be present to facilitate conversation and assist attendees in learning how to fully utilize their membership perks.

Are you interested in hosting the next Coffee with the Chamber? If so, please contact Mac Holford or Melissa Jones.

RIBBON CUTTINGS & CELEBRATORY EVENTS



**BURLINGTON YMCA
WEST GYM, LOCKER ROOMS AND
FRONT RESTROOM
REMODEL**

TO SCHEDULE A RIBBON CUTTING,
CONTACT MELISSA JONES AT
MJONES@GREATERBURLINGTON.COM

2025

Business After Hours Schedule

Making Connections



**GREATER BURLINGTON
CHAMBER of COMMERCE**
A DIVISION OF THE GREATER BURLINGTON PARTNERSHIP



DATE LOCATION

Feb 13 Premier Physical Therapy

Mar 13 Keystone Home

Apr 10 Rheinschmidt's Flooring America

May 8 Summer Street Animal Clinic

June 12 The Busted Cup Brewhouse

Sept 11 Addington Place of Burlington

Oct 9 Burlington Community
School District (High School)

GreaterBurlington.com/BAH

TDT
CPAs and Advisors

Burlington • Mt. Pleasant • Cedar Rapids,
Fairfield • Centerville • Oskaloosa

**Advisory, Tax, Assurance
Wealth Management, Payroll
Bookkeeping**

319-753-9877 www.tdtpc.com

323 Jefferson St., Burlington, IA 52601



WORLD

**We help our clients
manage and protect
their most valuable
assets—their people
and their business.**

**LARGE RESOURCES.
LOCAL RELATIONSHIPS.**

319-753-0144
yourteam@worldinsurance.com
www.worldinsurance.com

MIDWEST HOME BUILDER
A DIVISION OF MIDWEST REALTY GROUP

**MIDWEST
REALTY**
BUY. SELL. BUILD.



MidwestRealtyGroupInc.com
914 Broadway Street, STE 3 | 319-237-1139

2025 MARKETING & SPONSORSHIP OPPORTUNITIES

Are you looking for an opportunity to get your business in front of the community and fellow Chamber members? Some great opportunities are available in 2025:

- Intern Connection Program Premier Sponsor
- Greater Burlington Leadership Session & Graduation Sponsorships
- Government Relations Sponsorships
- Small Business Breakfast Speaker Sponsorship
- Downtown Mini Golf Challenge
- Teachers Appreciation Reception – Premier & Platinum Sponsorships
- Downtown Spring Open House Premier Sponsorships
- Sip, Taste & Stroll Platinum Sponsorship
- Witches Night Out Premier Sponsorship



Contact Melissa Jones, 319-208-0052, or mjones@greaterburlington.com to secure your opportunity or for more information.



Community Profile and Member Directory:

Get Your Business Noticed

Town Square Publications will be wrapping up sales calls about placing ads in the 2025 Chamber Profile & Member Directory soon. These calls are supported by the Greater Burlington Partnership. Any ads placed in the magazine will be published in the guide and distributed in spring of 2025. Thank you to those who have already committed to advertising in the magazine.

Get your business noticed and keep it successful. Purchase your advertising space with the most effective publication distributed in Greater Burlington.

PORT OF BURLINGTON WELCOME CENTER
400 N FRONT ST, BURLINGTON | 319-752-8731

Visit BurlingtonIowa.com

GREATER BURLINGTON CONVENTION & VISITORS BUREAU
A DIVISION OF THE GREATER BURLINGTON PARTNERSHIP

HEROES for LIFE

BE A HERO FOR PATIENTS, GIVE BLOOD!

BURLINGTON DONOR CENTER

3407 Agency Street
MON - WED: 10am - 5:30pm
THU: 7-11:30am
FRI - SAT: 7am-1pm

SCAN ME!

JANUARY

january

View more events at
GreaterBurlington.com/Events

EVENTS

1 - 31 - January Gallery Show:
 Tracy Ingham
 Art Center of Burlington, hours vary
BTownArt.com

2 and 3 - Lewis Knudson
 La Bohème, 8 PM
facebook.com/61552960887564

3 - First Friday: The History of Chocolate
 Burlington Public Library, 10 AM
Burlington.lib.ia.us

3 and 17 - Friday Night Art Hop
 Art Center of Burlington, 6 PM
BTownArt.com

4 and 18 - Chess Club
 Burlington Public Library, 9 AM
Burlington.lib.ia.us

4 - That's Yesterday's News
 Burlington Public Library, 10 AM
Burlington.lib.ia.us

4 - Season Awards Banquet
 Catfish Bend Convention & Event Center
 7 PM
34Raceway.com

4 - Matt Landon Duo
 La Bohème, 8 - 10 PM
facebook.com/61552960887564

5, 12, 19 and 26 - Drone Camp
 Inspiration Lab, 1 PM
facebook.com/61555675836771

9 - Girls' Softball Tryouts
 FunCity Turf, 5 PM
GreaterBurlingtonSports.com

10 - Dennis Albee
 Night Cap Listening Lounge, 7 PM
BurlingtonCapitolTheater.com

11 - Matt Landon Duo feat. David Katz
 Night Cap Listening Lounge, 7 PM
BurlingtonCapitolTheater.com

12 - 2025 Showcase & Season Preview
 Legacy Theater, Carthage, IL, 2 PM
TheLegacyTheater.com

15 - Lunchtime Chamber Music Series
 First United Methodist Church, 12:15 PM
facebook.com/BurlingtonLunchtimeChamberMusicSeries

17 - Friday Forum, Topic: Healthcare
 Greater Burlington Partnership, 8 AM
GreaterBurlington.com

17 - Jonas Magram
 Night Cap Listening Lounge, 7 PM
BurlingtonCapitolTheater.com

18 - Eagle Watch
 Port of Burlington/Lock & Dam, 10 AM
GreaterBurlington.com

23 - Sew What?
 Burlington Public Library, 6 PM
Burlington.lib.ia.us

23 - Open Mic Comedy Night
 Night Cap Listening Lounge, 7 PM
LiveAtTheCapitol.com

24 - Chamber of Commerce
 Annual Dinner
 Catfish Bend Convention & Event Center
 5 PM
GreaterBurlington.com

24 - Matt Landon Duo feat. Blake Shaw
 Night Cap Listening Lounge, 7 PM
BurlingtonCapitolTheater.com

24 - Little Texas
 Legacy Theater, Carthage, IL, 7 PM
TheLegacyTheater.com

24 - Matt & Emma ft. Blake Shaw
 Night Cap Listening Lounge, 7 PM
LiveAtTheCapitol.com

25 - Seed Swap
 Burlington Public Library, 9 AM - 5 PM
Burlington.lib.ia.us

25 - Revel in Red
 Capitol Theater, 7:30 PM
BurlingtonCapitolTheater.com

26 - Wedding & Event Expo
 Catfish Bend Convention & Event Center,
 11 AM - 2 PM
facebook.com/PritchardBroadcasting

27 - Matt Lando Duo.
 La Bohème, 8 - 10 PM
facebook.com/events/566051695949960

28 - Eclectic Music Night
 with Chris Powell
 La Bohème, 8 - 10 PM
facebook.com/events/1757824828377687

28 - Coffee with the Chamber
 Midwest Realty Group, LLC
 8 AM
GreaterBurlington.com

29 - Shepherd's Table Free
 Community Meal
 First Congregational Church, 4:30 PM
FCCBurlington.org

29 - Johnny Rogers: Buddy & Beyond
 Night Cap Listening Lounge, 7 PM
LiveAtTheCapitol.com

31 - Frist Fair
 Burlington Public Library, 9 AM - 5 PM
Burlington.lib.ia.us

STANDARD OF BEVERDALE

WHAT ARE YOU
 DREAMING OF? LET US
 HELP YOU BUILD IT.



- ROOFING
- FENCING
- MATERIALS
- PLUMBING
- WINDOWS
- HARDWARE
- DOORS
- ELECTRICAL
- SIDING
- APPLIANCES

WE SUPPLY THE BEST PRODUCTS TO
 HELP YOU BUILD THE HOME OF YOUR
 DREAMS

WE CARRY YOUR FAVORITE BRANDS

Now including
 the largest
 selection of
Carhartt in
 Southeast
 Iowa



carhartt

FOLLOW US ON 319-754-5174

STANDARD OF BEVERDALE

11194 TWIN PONDS DRIVE
 WEST BURLINGTON, IA 52655

Menke & Company
 CERTIFIED PUBLIC ACCOUNTANTS
 Integrity & Experience at Work for You



- ◆ Tax Planning & Preparation
- ◆ Accounting & Bookkeeping
- ◆ Full-Service Payroll
- ◆ Controllership Services
- ◆ Audit & Review
- ◆ Business Consulting

320 N. Third, Ste 300, Burlington, IA 52601
 319-753-2000 • Menkeco.com

SG General Contractor

CONSTRUCTION

- Design
- Engineering
- Construction

2204 West Mt. Pleasant Street
 West Burlington, IA 52655
 319-752-7154
ron@sgconstructco.com
www.sgconstructco.com

FIRE AND WATER
 CLEAN UP & RESTORATION
 24 HOUR EMERGENCY SERVICE



COMMERCIAL OR RESIDENTIAL
 COMPLETE MOVE-OUTS
 MOLD MITIGATION & REMEDIATION
 TRAINED, UNIFORMED PROFESSIONALS

SERVPRO
 OF BURLINGTON

319-754-8050 OR 877-754-8050
WWW.SERVPROBURLINGTON.COM

**KENNY'S
 ROLLER RANCH**

**&
 REC CENTER**

- SKATING • PARTIES • GOLF
- BATTING CAGES
- BASKETBALL BANKSHOT



319-752-2043

KENNY'S ROLLER RANCH.COM
 8989 Koestner Avenue | Burlington, IA 52601

EXPERIENCE THE MAJESTY OF EAGLES AT THE ANNUAL EAGLE WATCH EVENT



January in Greater Burlington means it's time for a beloved tradition, the Eagle Watch Event. This event offers a unique opportunity to witness the breathtaking beauty of bald eagles in their natural habitat along the mighty Mississippi River.

Hosted by Des Moines County Conservation, join us on January 18, starting at 10 AM at the Port of Burlington, where Des Moines County Conservation Volunteers will lead an immersive eagle presentation, sharing their passion and expertise. Even if you have come to past eagle programs, there's new information we are excited to share with you!

Afterward, caravan to Lock and Dam 18 for an eagle observation session, a short 15-minute drive from the Port of Burlington. Feel free to bring your binoculars or borrow some on-site.

This family-friendly event wraps up at noon and welcomes participants of all ages. No registration or fees required. Dress for the weather and stay informed about any changes or cancellations by calling 319-753-5808.

LA BOHÈME JANUARY EVENTS

Experience the sounds yourself, January 2 and 3, 8 - 10 PM. Lewis Knudsen is a songwriter based in Moline, IL (Quad Cities) who has toured coast-to-coast in the US, as well as in South Korea, Germany, Netherlands, Denmark, and the U.K. Lewis' songs have been featured on FOX as well as Netflix.

The Matt Landon Duo Featuring Emma Reynolds are back to celebrate the New Year, January 4, 8 - 10 PM.

Matt Landon Duo., December 27 from 8 - 10 PM. The Matt Landon Duo featuring Emma Reynolds returns.

Eclectic Music Night with Chris Powell, December 28 from 8 - 10 PM.

MATT LANDON LIVE AT NIGHT CAP LISTENING LOUNGE

JANUARY 18 AND 31, 7 PM

Matt Landon, a gifted guitarist, educator, and songwriter from Burlington, Iowa, is renowned for his expertise in jazz guitar. Matt gained recognition in international guitar competitions, including third place in the 2013 Montreux Jazz Festival and second place in the Wilson Center Jazz Guitar Competitions in 2017 and 2018. Matt also holds a Master's in Jazz Studies.

OPEN MIC COMEDY NIGHT

JANUARY 23, 7 PM | NIGHT CAP LISTENING LOUNGE & THE CAPITOL

Got jokes? Or just want to hear some? Either way, we've got you covered.

Join us for Open Mic Comedy Night on January 23 from 7 PM at Night Cap. Whether you've been working on a set or just want to show up and enjoy the laughs, it's all about good times and great comedy.

For more information and to view other events visit: [Facebook.com/BtownCapitol/events](https://www.facebook.com/BtownCapitol/events)



MEMBER SPOTLIGHT

Submit member information to Brenda Levitt at blevitt@greaterburlington.com

GREATER BURLINGTON PARTNERSHIP

Here's Your Sign

START LOOKING
GreaterBurlington.com/Jobs

RE/MAX

REAL ESTATE SPECIALISTS, INC.

LOCALLY OWNED
NATIONALLY KNOWN

SOLD
FOR SALE

Find us on Facebook

123 Broadway St, West Burlington, IA 52655
BurlingtonIowaHomes.com • 319-752-8888

Each office is independently owned and operated

Energy For The Future

Big River Resources
Highway 34 & Beaverdale Rd
West Burlington
Phone: 319-753-1100

BigRiverResources.com

ETHANOL

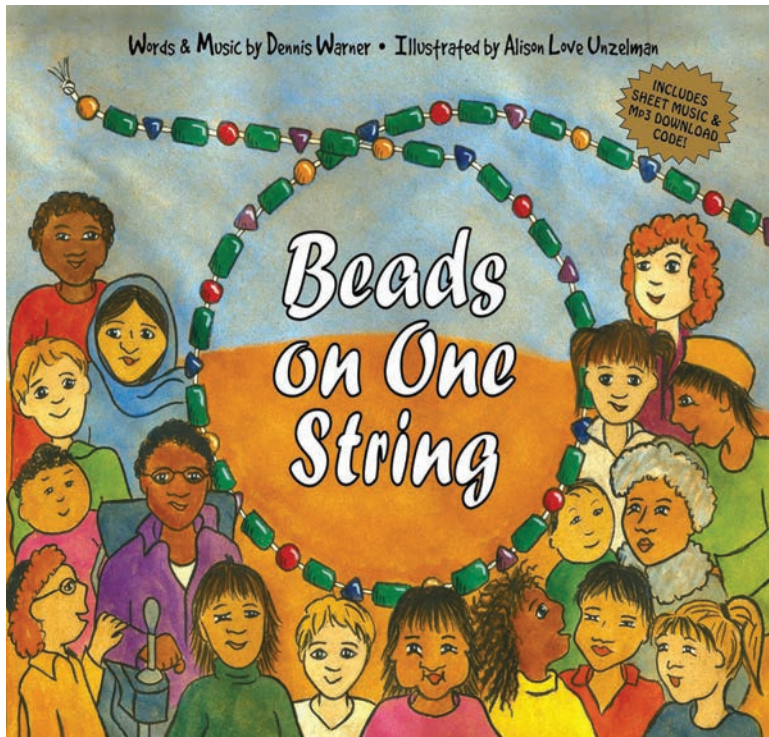
Proudly Made In The U.S.A.

CLEANER BURNING FUEL
GOOD FOR YOU.
GOOD FOR THE ENVIRONMENT.

BECKER'S JEWELERS

For moments that matter this holiday season!

FULL SERVICE JEWELERS
www.beckerdiamonds.com



BEADS ON ONE STRING - BEADS ON ONE STRING CELEBRATION COMING TO DOWNTOWN BURLINGTON

Mark your calendars for an inspiring week in April as the Beads on One String celebration takes over Downtown Burlington! On April 17, 2025, singer-songwriter Dennis Warner will share his powerful message of unity and positivity with local elementary students during the day, followed by an evening concert at The Capitol Theater featuring his song, Beads on One String.

This collaborative event, hosted by The Capitol, Burlington Public Library, Art Center of Burlington, and Downtown Partners Inc., will highlight themes of diversity, inclusion, and connectedness. Leading up to the concert, the community is invited to participate in unique projects: create personalized beads at the Art Center, share stories through a Human Library Project at the Burlington Public

Library, and enjoy an interactive Story Walk downtown, bringing Warner's book *Beads on One String* to life.

These activities provide an opportunity for individuals of all ages to celebrate creativity, foster connections, and support local businesses. The event highlights the importance of unity and showcases the vibrant spirit of the Burlington community.



Proud to Be
Your Community Bank
 Since 1916
FM BANK & TRUST
 fmbanktrust.bank



TWO RIVERS
 Bank & Trust

Your Trusted Partner
 Let us help you reach your financial goals.



Member **FDIC**
 319-753-9100 | tworivers.bank



DIXON'S
 SEAMLESS GUTTERS, LLC
 Leaf Covers, Cleaning & More!
319-850-6097

We PUT our MINDS in the GUTTER... So you DON'T have TOO!!!

dixonseamlessgutters.net