

January 2026



THE PARTNERSHIP

GREATER BURLINGTON PARTNERSHIP NEWSLETTER - VOL. 106 NO. 01



President & CEO's Letter



Dear Members and Friends,

It's a new year, and with it comes the familiar pressure to reinvent, reset, and roll out something brand new. But do we always have to start the year by doing new things?

At the Greater Burlington Partnership, innovation is part of our DNA. We are always exploring fresh ideas, new initiatives, and creative approaches that strengthen our region. And yes, the calendar gives us a blank slate to imagine what is possible.

Just as we reflected last month on the changes and challenges of 2025, this new year invites us to carry that same resilience forward. Change may be constant, but our progress comes from both

embracing what's new and building on the relationships, successes, and momentum we have already created.

Looking back on 2025, we began the year full of hope. That hope translated into action. We launched and supported meaningful initiatives that made a real impact. One standout example came from our Chamber of Commerce, which wanted to support our nonprofit members in a new and significant way. The result was The Reason for the Season Expo.

Unlike our traditional Business After Hours events, which are reserved for Chamber members, this gathering welcomed the entire Greater Burlington community. Burlington High School students provided entertainment, and Chamber members stepped up as sponsors (thank you!). Half of each sponsorship supported a community fund. With additional donations that evening, we were able to present a check for \$1,425 to Young House Behavioral Services. Our nonprofit partners loved it, the community showed up, and excitement for next year is already growing.

Downtown Partners, Inc. also found creative ways to bring new energy into the community. Faced with reduced revenues due to property tax reform, the DPI board chose not to cut back. Instead, they created something new. They launched an annual mini-golf fundraiser at Burlington Black Water Mini Golf, inviting golfers of all experience levels to enjoy friendly competition and fun.

DPI also secured a Creative Places grant and began an alleyway activation project to increase social gathering spaces and enhance downtown vibrancy.

The Convention and Visitors Bureau advanced population growth and tourism efforts through a targeted YouTube campaign spotlighting West Burlington. In 2025, the CVB also achieved unprecedented social media reach, doubling engagement compared to the previous year and significantly expanding awareness of the region.

Grow Greater Burlington's board also made a significant investment in our future workforce by paying the chapter fee up front for the new Des Moines County CEO program, which will be offered to all high school juniors and seniors in the county. Our community responded in a big way, pledging nearly \$150,000 to fund the start-up and the first three years of this remarkable program.

As we begin 2026, let's embrace both the excitement of trying new things and the value of building on what's already working. Together, that balance propels Greater Burlington forward.

Happy New Year!

Partnership Staff



Amy O'Brien
President & CEO
319-208-0043
aobrien@greaterburlington.com



Melissa Jones
Chamber of Commerce
Exec. Dir. 319-208-0052
mjones@greaterburlington.com



Amy Moyner
Downtown Partners, Inc.
Exec. Dir. 319-208-0056
amoyner@greaterburlington.com



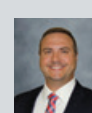
Chris Gram
Convention & Visitors Bureau
Exec. Dir. 319-208-0045
cgram@greaterburlington.com



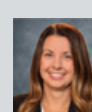
Taylor Collins
Economic Development
Exec. Dir. 319-208-0050
tcollins@greaterburlington.com



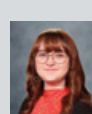
Crystal Jolin
Director of Finance
319-208-0044
cjolin@greaterburlington.com



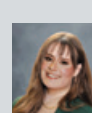
Dustin Roth
Marketing & Communications
Dir. 319-208-0048
droth@greaterburlington.com



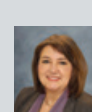
Telisha Van Rycke
Regional Director of
Workforce Innovation
319-208-0046
tvanrycke@greaterburlington.com



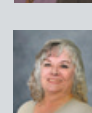
Kaylea Felland
Convention & Visitors Bureau
Prog. Coord. 319-752-8731
kfelland@greaterburlington.com



Mac Holford
Events Manager
319-208-0040
mholford@greaterburlington.com



Brenda Levitt
Graphic Designer
319-208-0047
blevitt@greaterburlington.com



Pam Wright
Office Manager
319-208-0042
frontdesk@greaterburlington.com

SUBSCRIPTIONS: Price is \$24, which is included in annual events fees. Non-members: \$4 per issue. Periodicals postage paid at Burlington, Iowa.
POSTMASTER: The Partnership is published monthly by the Greater Burlington Partnership
610 North 4th Street, Suite 200, Burlington, Iowa 52601.

POSTMASTER: Send address changes to Greater Burlington Partnership (USPS 001-692) 610 North 4th Street, Suite 200, Burlington, Iowa 52601.



*Kyle Gugeler at
Southeast Iowa Regional Airport*



*Stephanie Brakeville at
Thyme & Spice Company
New Location*



*Tim Lundgren at
The Capitol*



*Bryan Bross at
Western Smokehouse Partners, LLC
Construction Site*

ON THE COVER

2026 BOARD CHAIRS

Each year, the Board of Directors is responsible for establishing the policies and goals of the Greater Burlington Partnership. The organization's unique structure brings together the Chamber of Commerce, Economic Development, Convention & Visitors Bureau, and Downtown Partners, Inc. under the collective umbrella of the Greater Burlington Partnership. This collaborative model has proven to be an effective strategy for serving the community.

To support this structure, each division operates with its own Board of Directors, segregated funds, and a distinct mission statement to guide its work. During their one-year terms, division Chairs represent the organization at a variety of functions and meet collectively to ensure the Partnership operates efficiently and effectively.

When given the opportunity, please join us in thanking these individuals for their time, leadership, and dedication to the organization and the community.

In 2026, the Chairs of the divisions are (from left to right):

- Kyle Gugeler, Standard of Beavertdale Chamber of Commerce Board Chair
- Stephanie Brakeville, Klingner and Associates, P. C. Downtown Partners, Inc. Board Chair
- Tim Lundgren, Farm Bureau Financial Services - Tim Lundgren Convention & Visitors Bureau Steering Committee Chair
- Bryan Bross, Klingner and Associates, P. C. Economic Development Board Chair

Meet the New Leadership

Chamber of Commerce Kyle Gugeler, Standard of Beaverdale



Goal: Stepping into the role of Board Chairman in 2026 is a responsibility I take seriously and one I'm grateful for. Over the past two years, I've seen firsthand the dedication of our staff, volunteers, and business leaders who work every day to move Greater Burlington forward. My goal is to build on that momentum by strengthening collaboration between our local businesses, community partners, and the Chamber team. I want to focus on measurable progress and supporting growth in our small businesses, championing workforce development, and helping position Greater Burlington as a community where families, entrepreneurs, and employers can thrive.

Why: In my time serving on the board, I've been inspired by the passion past chairpersons have brought to this role and the commitment they've shown to Burlington and the surrounding region. I've also seen how hard the Partnership staff works every day to support our businesses and move our community forward. That combination of leadership and dedication made it easy for me to say yes to serving as chairman. With the foundation built by those who came before me and the strength of the team we have in place, I'm excited about the future of Greater Burlington and honored to help contribute to the progress ahead.

Economic Development Bryan Bross, Klingner and Associates, P.C.



Goal: I am honored and excited to be elected Chairperson for Grow Greater Burlington for 2026. As a long time investor in Partnering for the Future and board member with GGB for many years, I am excited about the potential our area has for growth. We have worked long and hard to fill Flint Ridge Business Park, and one of my goals will be to get the planning started for possible expansion of that and creating a new business/industrial park to ensure future growth for the Greater Burlington area.

Why: We have a new Director of Economic Development, Taylor Collins, who has the energy, enthusiasm, and governmental contacts to really gain some momentum for the Greater Burlington area. I am excited about the possible opportunities that we will have with Taylor on the team, and I want to make sure we capitalize on all of the opportunities that come our way. GGB is taking the lead on expanding our natural gas supply in SE Iowa in order to attract large industries and additional industrial expansion. GGB is also working closely with the Highway 61 Coalition to tackle the aging transportation infrastructure along the Roosevelt Avenue corridor of US 61 in Burlington. All of this is necessary in order to support existing economic development, but also to promote future growth and expansion. Let's roll up our sleeves and GET BUSY!



Convention & Visitors Bureau

Tim Lundgren, Farm Bureau Financial Services - Tim Lundgren

Goal: I'm excited and humbled to lend a hand as part of a talented team in crafting our message to reflect all that Greater Burlington has to offer – while further refining what best lends to memorable tourism experiences for our visitors and positive economic impact for our neighbors.

Why: Having been involved with the Greater Burlington Partnership in multiple roles for nearly a decade, I've had the opportunity to experience firsthand the many ways in which the organization as a whole, and the Convention & Visitors Bureau specifically, fosters creative partnerships to enhance tourism of our great region.



Downtown Partners, Inc.

Stephanie Brakeville, Klingner and Associates, P.C.

Goal: I am honored to step into the role of Chairman for the Downtown Partners' board. I believe Downtown is the vibrant heart of our city, and I look forward to collaborating with our dedicated board, businesses, and community members to ensure its continued success. Our historic architecture, exciting events, and dedicated volunteers are a powerful draw for visitors and engagement. We aim to make sure that everyone knows 'It's Happening!' in Downtown Burlington, growing its role as a lively, inviting, and architecturally rich place to eat, drink, shop, and enjoy.

Why: I believe a location's architecture is a critical tie to its local culture. The rehabilitation of existing buildings and the infill of new construction over the past several years has been astounding and transformative. I accepted the role of Chair because, as a nearly lifelong resident of Burlington, I have a vested interest in the success of our downtown, and I'm excited to see its true potential realized. I want to help champion initiatives that highlight our unique character, drive investment, and ensure our downtown remains authentic, dynamic, and thriving for years to come.

2026 Partnership Board Officers

Chamber of Commerce Officers

Chair - Kyle Gugeler, Standard of Beverdale
Chair Elect - Brent Hartley, MidWestOne Bank
Past Chair - Craig Smith, Sterzing Food Company
Treasurer - Jeff Ebbing, Southeastern Community College

Economic Development Officers

Chair - Bryan Bross, Klingner and Associates, P.C.
Chair Elect - Ryan Nagrocki, Midwest Realty Group, Inc.
Past Chair - Tina McCulloch, Big River Resources, LLC
Treasurer - Gary Hoyer, Great River Entertainment, LLC

Downtown Partners, Inc. Officers

Chair - Stephanie Brakeville, Klingner and Associates, P.C.
Chair Elect - Cheryl Plank, Imagine the Possibilities, Inc.
Past Chair - Kathy Bentz, The Busted Cup Brewhouse
Treasurer - Brandon Kipp, Two Rivers Bank & Trust

Convention & Visitors Bureau Officers

Chair - Tim Lundgren, Farm Bureau Financial Services -
Tim Lundgren

JOIN 
US

SOUTHEAST IOWA REGION



SOUTHEAST IOWA DAYS 2026, DES MOINES • FEBRUARY 4 AND 5

Join fellow business and community leaders for Southeast Iowa Days, the Greater Burlington Partnership's signature two-day advocacy trip to the state capitol. More than 100 delegates from across the region travel to Des Moines each year to highlight the priorities that matter most to Southeast Iowa.

During the event, participants hear from and meet with legislators and key state officials to discuss issues affecting workforce development, small business vitality, infrastructure, and overall regional growth. The experience also provides valuable time to connect with leaders from neighboring communities, strengthening collaboration across Southeast Iowa.

WHY ATTEND:

Southeast Iowa Days offers a front-row look at how policy decisions are made and how regional voices can influence them. Attendees gain practical understanding of the legislative environment, expand their professional network and contribute to a unified message supporting Southeast Iowa's future.

COST:

Registration is \$150 per person and includes the luncheon, legislative reception and topic-focused discussions. To ensure your name appears in the printed program, please register by January 15. Scan the QR code to the right to register.

TRAVEL DETAILS:

Participants are responsible for their own travel arrangements. For lodging, contact Embassy Suites at 515-244-1700 and mention Southeast Iowa Days. A block of rooms has been reserved until January 6.



Scan Me



Scan Me

Welcome



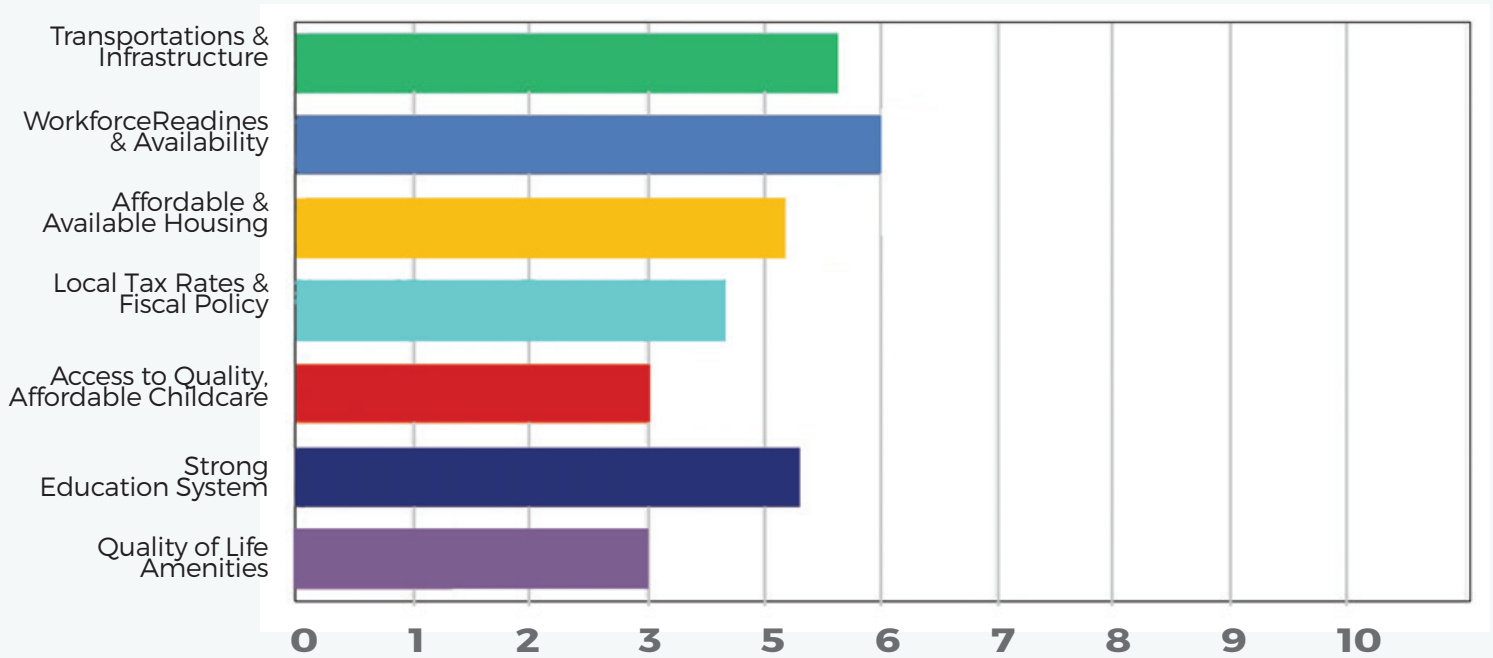
Ellie Vincent

Ellie is grateful for the opportunity to serve as an intern at the Greater Burlington Partnership. Her interest in working with the organization developed during a job shadow completed as part of a Business Administration course at Southeastern Community College. She is drawn not only to the staff, but also to the Partnership's positive impact on the community. She is particularly excited about the internship because it offers exposure to a variety of areas, providing valuable learning experiences. At this stage of her life, she values opportunities that help her explore and better understand potential career paths.

Ellie grew up in Mediapolis, Iowa, and is currently continuing her education at Southeastern Community College. She values spending quality time with friends and family and has a strong passion for long-distance running. Maintaining an active lifestyle, both physically and within her close relationships, is important to her.

Political Action Member Survey Results

Members were asked which local issues should be prioritized to strengthen the Greater Burlington area for businesses and residents: (Ranked in order of importance.)



2026 Legislative Priorities

The Greater Burlington Partnership has developed its 2026 state Legislative Priorities with input from its members. Based on feedback from the Political Action Survey conducted by the Government Relations Committee of the Chamber of Commerce, the priorities remain consistent with 2025.

The focus continues with workforce development and talent attraction, infrastructure, housing affordability, and energy resilience. These priorities guide the Partnership's advocacy efforts to support and strengthen Southeast Iowa's business community.

The Partnership values the continued engagement of its members as it works to ensure the region's voice is represented

*** A complete 2026 Public Policy Agenda is available at GreaterBurlington.com.**



DOWNTOWN DEETS:

Professional Development for Small Businesses

FREE



Rsvp

Downtown Deets: Professional Development for Small Businesses January 12, 8:30 AM

Downtown Partners, Inc. is excited to launch a new Downtown Deets professional development series designed to equip local entrepreneurs and small business owners with practical tools to strengthen their marketing and customer reach.

The January session will feature Tara Louisa Allen, marketing educator, strategist, and founder of Eagle Eye Vision Consulting LLC. Tara, Lead of Marketing Management at Kirkwood Community College, blends real world strategy with purpose driven learning and is known for engaging, hands on workshops that help small business owners confidently use new tools, especially AI.

Training Topic: AI in Action - Smarter Social Media, Stronger Connections, and more customers in this interactive workshop. Participants will explore how AI can help small businesses attract attention, build loyal connections, and increase visibility on today's most active social platforms.

Attendees will learn how to better understand their audience, analyze competitors, and create authentic, engaging content. Tara will demonstrate AI prompts that simplify marketing, clarify messaging, and save time at no additional cost.

This Downtown Deets session is ideal for all experience levels and provides practical strategies to strengthen online presence and customer relationships—because It Is Happening in Downtown Burlington.

To RSVP, contact Amy Moyner at amoyner@greaterburlington.com or scan the QR Code at the top of the page.



MINI GOLF: TEE UP FOR THE MINI GOLF CHALLENGE

Tee Up to Support Downtown Burlington

Golf fans, costume lovers, and downtown supporters are invited to grab their putters and their people for the Mini Golf Challenge at Burlington Black Water Mini Golf on March 6.

Participants are encouraged to bring their craziest team outfits and most creative team names as they putt to support efforts that keep Downtown Burlington vibrant and happening. This one of a kind event promises a full day of fun, friendly competition, and community spirit.

Teams will make their way through creative and unique holes at Burlington Black Water Mini Golf, creating an unforgettable experience for golfers of all skill levels. Whether players are serious about sinking a hole in one or simply in it for the laughs, the event offers a playful way to support ongoing downtown revitalization.

Spots are filling quickly, so interested teams are encouraged to gather friends, family, or coworkers and register soon. If you are interesting in sponsoring this event, please Contact Melissa Jones at mjones@greaterburlington.com.



Fun & Games are coming to Downtown Burlington

March 21

VENDOR APPLICATIONS OPENING SOON FOR TWO SIGNATURE DOWNTOWN MARKETS

Get ready, Greater Burlington! Two of Downtown Burlington's most beloved events are gearing up for another incredible season, and vendor applications are right around the corner.



JEFFERSON ST. FARMERS MARKET

One of the community's favorite traditions, the Jefferson Street Farmers Market, kicks off again in May and runs through September. Each week, Jefferson Street comes alive with fresh produce, baked goods, handmade items, live music, and the unbeatable energy that only summer evenings downtown can bring. Vendor applications for the 2026 season will be opening soon. Whether you're a returning vendor or excited to join for the first time, this is your chance to be part of the region's most attended weekly market.

Stay up to date by following the Jefferson Street Farmers Market Facebook page, where all announcements will be posted.



=A VERY= Vintage Market

DOWNTOWN BURLINGTON

A VERY VINTAGE MARKET 2026

Downtown Burlington's largest vintage, handmade, and antique shopping event returns for its 11th annual celebration on Saturday, July 18, and it's going to be bigger than ever.

From repurposed goods and original art to curated vintage finds and handmade treasures, A Very Vintage Market continues to draw thousands of shoppers from across the region to explore the creativity and craftsmanship of our vendors.

Vendor applications will be opening soon at GreaterBurlington.com, and this is one event vendors won't want to miss. To stay in the loop, follow the A Very Vintage Market Facebook page for updates, reminders, and sneak peeks.

Both events are signature celebrations of the makers, growers, creators, and entrepreneurs who make Greater Burlington a thriving destination. If you are a vendor looking to grow your business, connect with customers, or share your craft, there is no better place to be than Downtown Burlington this summer.

WE CAN'T WAIT TO WELCOME YOU TO THE 2026 MARKET SEASON



LAST CALL FOR TICKETS

With only a few tables remaining, this is the last chance to join 500+ members of the community at the 2026 Annual Dinner.

Celebrate community awards, enjoy a plated steak dinner, and check out the live and silent auctions. This is Greater Burlington's biggest formal event and we want you there!

Along with the Wild West theme, entertainment for the event will feature a dinner performance from the incredible String Showdown, live painting by Jeri Sparks, and other surprise guest entertainers.

Reserve your table of 8, half table, or individual tickets by contacting mjones@greaterburlington.com

When: January 23, 5:30 PM

Where: Catfish Bend Convention & Event Center

SPONSORS



EVENT DETAILS

Additional information, outfit inspiration, and more



5TH GRADE CAREER FAIR RECAP



Greater Burlington Partnership hosted its annual 5th Grade Career Fair on December 15, welcoming more than 400 students from Des Moines County schools to an exciting morning of career exploration. Held at Southeastern Community College, the event benefited greatly from SCC's wonderful facilities and their partnership in making the experience smooth and memorable for students and presenters alike. Over 35 business partners from across Greater Burlington served as presenters, offering engaging, hands-on activities and insights into local career opportunities. Their support helped spark curiosity and broaden students' awareness of the many career pathways available right here in our community.



Showcase Your Industry. Shape the Future.

Join us at JA Inspire Southeast Iowa, a powerful career exploration event that connects your business with hundreds of 8th-grade students eager to learn about their future possibilities.

As an exhibitor, you'll have the unique opportunity to:

- Inspire the next generation of talent in your industry
- Build your future workforce by engaging with students early
- Highlight career pathways and skills needed in your field
- Make a lasting impact on students, educators, and the community

Interactive exhibits are required. Lunch is provided to exhibitors.

**Be a part of something meaningful.
Help students dream big, and show them how to get there.**



February 11-12, 2026
8am-2:30pm



Armed Forces Reserve Center
Middletown, IA



8th grade students from Des Moines, Lee and Henry County schools

For more information or to reserve your spot as an exhibitor, please contact Teli Van Rycke at tvanrycke@greaterburlington.com or Brittney Carstens at brittney.carstens@ja.org.

Learn more -





LEADER LAB Update



On December 4, Leader Lab participants attended Session 2, focused on Pride and its impact on a healthy, high-performing workplace culture. The session emphasized two key takeaways: employees and leaders must feel pride in their organizations, and organizations must show pride in their people. Through interactive discussions and hands-on activities, participants explored practical strategies to strengthen pride within their teams. Many are already applying these tools, creating more motivated, connected, and empowered workplace environments in Greater Burlington.





Revitalize Roosevelt

In 2025, the Greater Burlington Partnership, in collaboration with the Highway 61 Coalition, Des Moines County, the City of Burlington, and the City of West Burlington, began a collective partnership to develop, revitalize, and reconfigure the Roosevelt Corridor of Highway 61 through Burlington. To achieve this, Grow Greater Burlington hired Snyder & Associates, the civil and structural engineering firm, to guide the coalition with the mission of presenting a plan to Iowa's Transportation Commission at their regional meeting in Southeast Iowa in 2026.

This process started in September 2025 with a public input session that was held to collect public input from the community and to hear what they would like to see in a reimagined corridor. A second public input session was then held in November to gather feedback on three potential plans for the road designed by Snyder & Associates. After feedback at this second meeting, a consensus plan was presented to and approved by the Highway 61 Coalition in December.

Over the next year, the Highway 61 Coalition will be working with the District 5 DOT Office before presenting the plan to the State of Iowa's Transportation Commission at their April meeting in Fort Madison in 2026.

Learn more at GreaterBurlington.com/RevitalizeRoosevelt

West Burlington Housing Needs Survey

We want to know what you think!

The City of West Burlington is participating in Iowa State University Extension and Outreach Community and Economic Development (CED) unit's Rural Housing Readiness Assessment (RHRA) Program. A local housing steering committee will be participating in an educational session and a strategic planning session with CED specialists to create a vision and an action plan to address housing needs in West Burlington.

Gathering your input is an important part of this process your and ideas about housing needs are valuable to the West Burlington housing steering committee, so we are inviting you to take a few minutes to complete a brief online survey.

The survey is sponsored by the City of West Burlington, the Iowa Finance Authority, and Iowa State University Extension and Outreach Community and Economic Development.

Questions?

Contact Gregg Mandsager at 319-752-5451 or mandsagerg@westburlingtoniowa.gov.

This institution is an equal opportunity provider. For the full non-discrimination statement or accommodation inquiries, go to www.extension.iastate.edu/legal. ADV.21.109.

Scan here to take the survey:



<http://isu.wb.city>



IOWA STATE UNIVERSITY
Extension and Outreach
Community and Economic Development





The Community Foundation of Des Moines County Announces Grant Winners

The Community Foundation of Des Moines County is pleased to announce the winners of the 2025 Fall Large Impact grants. Three non-profit organizations each receiving a \$20,000 grant.

Art Center of Burlington - Art Van, Art for Everyone, Everywhere - The Art Van project brings art classes, workshops, and mini exhibits directly to neighborhoods, schools, and community events, expanding the Art Center's outreach and ArtScapes programs. A van outfitted for art supply storage and adaptable as a mini gallery would allow the Art Center to more powerfully and accessibly bring programs to underserved audiences and community partners, enhancing the ability to facilitate meaningful experiences and offer more opportunities to the people of Des Moines County.

Burlington/West Burlington Area Development Foundation - Des Moines County CEO: Preparing Students, Strengthening our Community - The Des Moines County CEO (Creating Entrepreneurial Opportunities) Program is a year-long, hands-on learning experience that prepares high school juniors and seniors to become future leaders, entrepreneurs, and engaged community members. Rather than learning from textbooks, students step directly into the real world, touring more than 40 local businesses, connecting with over 60 community leaders, and launching both class-based and individual ventures. They gain essential skills in leadership, communication, financial literacy, and innovation while building confidence and professional networks that last well beyond graduation.

Community Action of Southeast Iowa- Housing Assistance - Housing Assistance will serve people who are homeless and at risk of homelessness. Funding from the Foundation will enable our agency to: work with individuals on their barriers to housing, provide guidance, resources, connections, referrals, support, case management, and financial assistance. Funds will strengthen individuals by helping them to obtain identification documents, work supports, and transportation. Housing Assistance will place people in permanent homes with short-term financial assistance if needed for rent and deposits. Evictions can be avoided with funding available to resolve issues in collaboration with landlords and clients.

Taco John's Burlington Receives Recognition for franchise excellence

The local restaurant, operated by Corrick Vision and partners, has earned the title of Top Franchisee across the entire Taco John's system, thanks to exceptional performance throughout 2024 and into 2025.

This recognition from Taco John's International, Inc. highlights the Burlington team's dedication to quality, innovation, and guest satisfaction.

"This award is a reflection of our hardworking crew and the amazing community that supports us every day," said Bill Corrick, president of Corrick Vision.

SCC Named an Aspen Prize Top 200 U.S. Community College

Southeastern Community College (SCC) has been named an Aspen Prize Top 200 U.S. Community College by the Aspen Institute College Excellence Program, becoming eligible to compete for the 2027 Aspen Prize for Community College Excellence and \$1 million in shared Prize funds. With more than 1,000 community colleges nationwide, this recognition places SCC among a select group of institutions demonstrating strong and improving student outcomes.

The Aspen Prize is the nation's signature recognition of high achievement and performance among community colleges. Eligibility is based on outcomes in student learning, degree completion, workforce success, and equitable access for all students, including those from underrepresented backgrounds. Selection to the Top 200 indicates that SCC is outperforming national trends in key areas of student success, a core requirement of the Aspen Institute's data-informed evaluation model.

"This recognition affirms the hard work of our faculty, staff, and community partners," said SCC President Dr. Michael Ash. "Being named an Aspen Prize Top 200 U.S. Community College reinforces that our focus on improving student outcomes is making a real difference. We've made it our mission to meet students where they are and help them build a future they're proud of."

COFFEE WITH THE CHAMBER

JANUARY 27, 8AM

HEART SONG, INC. - 2700 JOURNEY LANE

There is no better way to start the day than with Coffee with the Chamber. Enjoy a casual atmosphere, a warm cup of coffee and meaningful conversations with Chamber members and Partnership staff. Join us on January 27 at Heart Song at 8 AM to meet new people, hear what is happening in the community, and share your own business story.

All members are welcome, whether you are brand new, seasoned or somewhere in between.

*Please RSVP to Melissa Jones,
mjones@greaterburlington.com*



EXPERIENCE THE MAJESTY OF EAGLES AT THE ANNUAL EAGLE WATCH EVENT

January in Greater Burlington means it's time for a beloved tradition, Des Moines County Conservation's Eagle Watch. This special event offers a unique opportunity to witness the breathtaking beauty of bald eagles in their natural habitat along the mighty Mississippi River.

Join Conservation staff at 10 AM on Saturday, January 24 at the Port of Burlington, where a DMCC Volunteer will lead an immersive eagle presentation, sharing their passion and expertise. Learn how the Mississippi Valley provides critical habitat for bald eagles, supporting their feeding and nesting during the winter months.

Afterward, caravan to Lock and Dam 18, a short 15-minute drive from the Port of Burlington, for an eagle observation session. Feel free to bring your binoculars or borrow a pair on-site.

This family-friendly event wraps up at noon and welcomes participants of all ages. No registration or fees required. Dress for the weather and stay informed about any changes or cancellations by calling 319-753-5808.



2026

Business After Hours Schedule

Making Connections

GREATER BURLINGTON CHAMBER of COMMERCE
A DIVISION OF THE GREATER BURLINGTON PARTNERSHIP



Mark your calendar

DATE LOCATION

Mar 12	Slumberland Furniture
April 9	Community Health Centers of Southeastern Iowa, Inc.
May 7	SADE Suites
June 11	Hopefully Yours (Event 4:30 - 6:30 PM)
Sept 10	The Views of Burlington - Ridgeview Assisted Living
Oct 8	Young House Behavioral Health

*** All events are 5 - 7 PM unless otherwise noted**

GREATER BURLINGTON PARTNERSHIP

The Greater Burlington Partnership Membership Directory

The Greater Burlington Partnership and Chamber of Commerce have teamed up with Town Square Publications to produce the full-color **Community Profile & Business Directory**. This publication offers an exceptional opportunity to share your story with thousands of business owners, residents, and visitors. As the premier resource for connecting with this audience, the **Community Profile & Business Directory** is the ideal platform to reach your target market.

Connect with thousands of visitors, new residents, and fellow Chamber and community members to expand your business and promote your services to a broader audience. In addition to the printed publication, online and mobile editions will be available on the Chamber's website, ensuring your story reaches a larger audience.

In addition, Town Square's National Profile Network extends the online visibility of your advertisement, enhancing your search engine optimization (SEO).

You don't want to miss this opportunity to promote your business. Reserve your ad space today with the most trusted, effective, and recognized publication in Greater Burlington.

Representatives from Town Square Publications will be contacting your soon, but don't hesitate to contact them at (319) 595-2890 or marketing@tspubs.com for more information.

Respectfully,
Melissa Jones
Executive Director
Chamber of Commerce

Fill out the form below and email to: marketing@tspubs.com

YES! I am interested in advertising in the Greater Burlington Chamber of Commerce Membership Directory!

Business Name _____ Contact _____
 Business Address _____ City _____
 Phone _____ Fax _____
 Email Address _____

Complete and email to marketing@tspubs.com, or call (319) 595-2890

COMMUNITY PROFILE AND MEMBER DIRECTORY

Get Your Business Noticed

Town Square Publications will continue making sales calls regarding advertising opportunities in the 2026 Chamber Profile & Member Directory through the first quarter. These efforts are supported by the Greater Burlington Partnership. Any ads placed in the magazine will be included in the guide and distributed in spring 2026. We sincerely thank those who have already committed to advertising in the magazine.

GREATER BURLINGTON PARTNERSHIP

Here's Your Sign

START LOOKING
GreaterBurlington.com/Jobs

www.accessenergycoop.com

Owned by the members we serve

1-866-242-4232 photo by Mary Adkins

NELSON

CARL A. NELSON & CO.

Design-Build | Construction Manager
General Contractor

Deliver Value. Build Trust. Repeat.

Industrial/Commercial
Construction Services

www.carlanelsonco.com
Burlington, Iowa | 319-754-8415

RE/MAX

REAL ESTATE SPECIALISTS, INC.

LOCALLY OWNED
NATIONALLY KNOWN

SOLD
FOR SALE

Find us on Facebook

123 Broadway St, West Burlington, IA 52655
BurlingtonIowaHomes.com • 319-752-8888
Each office is independently owned and operated

DON'T MISS YOUR 2026 SPONSORSHIP OPPORTUNITIES!

Get your business noticed in 2026! The Greater Burlington Partnership offers sponsorship, marketing, and advertising opportunities that put your brand in front of Chamber members, community leaders, and the Greater Burlington region.

Every opportunity helps you connect, engage, and make an impact. Act now before the most in-demand spots are claimed and make 2026 your year to shine!

- Annual Dinner: Cocktail Bar Sponsor, Tables and Tickets Available
- Downtown Mini Golf Challenge: Premier Sponsor, Golf Ball Sponsor, Score Card Sponsor, Hole Sponsor and Teams of 2
- Small Business Breakfast: Speaker Sponsor
- Jefferson Street Farmers Market: June or July Sponsor
- A Very Vintage Market: Entertainment Sponsor
- Chamber Golf Classic: Hecklers Tent Sponsor and Birdie Sponsors
- Intern Connection Program: Premier Sponsor and Partner Sponsor

CHAMBER AMBASSADORS *Spotlight*

LIZ ROSS
REAL ESTATE AGENT
CENTURY 21 PROPERTY
PROFESSIONALS & CAREER
EDUCATION SPECIALIST,
IJAG



As a proud Burlington native and Grayhound graduate, I bring both local roots and professional experience to my roles as an educator and real estate agent. Before working in real estate and in

the classroom, I built a strong foundation in the banking industry, where I developed expertise in communication, customer service, and financial literacy. My background also includes training and development, which strengthened my passion for helping others learn and grow.

I have a genuine desire to serve others, so helping individuals buy and sell homes is something I truly enjoy. I stay actively connected with the Chamber of Commerce, building valuable partnerships and relationships that support both my students and my business. Through these connections, I aim to provide students with real-world opportunities for career exploration, internships, and employer engagement, while also continuing to grow a successful real estate career.



NEW! Greater Burlington Visitors Guide
Available at thePort of Burlington Welcome Center

JANUARY

January

View more events at
GreaterBurlington.com/Events

EVENTS

7, 14, 21, and 28 - Historic Newspaper Readings
 Des Moines County Historical Society
 10 AM
 DMCHS.org

1 - Think Tank Thursday
 Night Cap Listening Lounge
 6 PM
facebook.com/nightcaplisteninglounge

2 - Recovery Hike
 Starr's Cave Nature Center
 2:30 PM
 DMConservation.com

2 - First Friday:
 Burlington Public Library
 10 AM
 Burlington.Lib.ia.us

2 and 16 - Friday Night Art Hop
 Art Center of Burlington
 6 - 8 PM
 BTownArt.com

3 - Orgy of the Dead 2 Iowa Premier
 The Capitol Theater,
 7 PM
 BurlingtonCapitolTheater.com

3 - That's Yesterday's News
 Burlington Public Library
 10 AM
 Burlington.Lib.ia.us

6 - Ladies' Adventure Group:
 New Year's Hike
 Starr's Cave Nature Center
 3:30 PM
 DMConservation.com

7, 14, 21 and 28 - History Club
 Des Moines County Historical Society,
 11:30 AM
 DMCHS.org

10 - Lewis Knudsen
 Night Cap Listening Lounge
 8 PM
facebook.com/nightcaplisteninglounge

10 - Girls Night Out: The Show
 Memorial Auditorium
 8 PM
 BurlingtonRiverfront.com

12 - Downtown Deets
 Greater Burlington Partnership
 8:30 AM
 GreaterBurlington.com

13 - 30 - January Gallery Show: Robert Johnson - Works on Paper
 Art Center of Burlington, times vary
 BTownArt.com

14 - Veterans Coffee & Conversation
 Wake N Bake Breakfast Company
 9 AM
facebook.com/HWMCL

15 - Open Mic Comedy Night
 Night Cap Listening Lounge
 7 PM
facebook.com/nightcaplisteninglounge

16 - Artist Reception: Robert Johnson
 Art Center of Burlington
 5 - 8 PM
 BTownArt.com

16 - Friday Forum, Topic: Healthcare
 Greater Burlington Partnership
 8 AM
 GreaterBurlington.com

17 - Revel in Red
 The Capitol Theater
 7 PM
 BurlingtonCapitolTheater.com

18 - Shhhe is Speaking
 Corked 101
 2 PM
 CorkDowntown.com

23 - Chamber of Commerce
 Annual Dinner
 Catfish Bend Convention & Event Center
 5 PM
 GreaterBurlington.com

24 - Eagle Watch
 Port of Burlington Welcome Center
 10 AM
 DMConservation.com

27 - Coffee with the Chamber
 Midwest Realty Group, LLC
 8 AM
 GreaterBurlington.com

28 - Shepherd's Table Free
 Community Meal
 First Congregational Church
 4:30 PM
 FCCBurlington.org

STANDARD OF BEVERDALE

WHAT ARE YOU DREAMING OF? LET US HELP YOU BUILD IT.



- ROOFING
- FENCING
- MATERIALS
- PLUMBING
- WINDOWS
- HARDWARE
- DOORS
- ELECTRICAL
- SIDING
- APPLIANCES

WE SUPPLY THE BEST PRODUCTS TO HELP YOU BUILD THE HOME OF YOUR DREAMS

WE CARRY YOUR FAVORITE BRANDS

Now including the largest selection of Carhartt in Southeast Iowa

carhartt

FOLLOW US ON 319-754-5174
STANDARD OF BEVERDALE
 11194 TWIN PONDS DRIVE
 WEST BURLINGTON, IA 52655

KENNY'S ROLLER RANCH & REC CENTER
 OPEN & REC CENTER

SKATING PARTIES
 GOLF
 BATTING CAGES
 BASKETBALL BANKSHOT

KennysRollerRanch.com
 319-752-2043 | 8989 Koestner Avenue | Burlington, IA 52601

BECKERS JEWELERS
 Nobody does 'D', like we do

Menke & Company
 CERTIFIED PUBLIC ACCOUNTANTS
 Integrity & Experience at Work for You

- ◆ Tax Planning & Preparation
- ◆ Accounting & Bookkeeping
- ◆ Full-Service Payroll
- ◆ Controllership Services
- ◆ Audit & Review
- ◆ Business Consulting

320 N. Third, Ste 300, Burlington, IA 52601
 319-753-2000 • menkeco.cpa

Big River Resources
 Highway 34 & Beverdale Rd
 West Burlington
 Phone: 319-753-1100
BigRiverResources.com

ETHANOL

Proudly Made In The U.S.A.
 CLEANER BURNING FUEL
 GOOD FOR YOU.
 GOOD FOR THE ENVIRONMENT.

LIVE MUSIC AT THE PORT

JANUARY 3 | 6:30 - 11 PM
PORT OF BURLINGTON

A throwback to the music shows held in downtown Burlington in the early 2000s. The bands will be as follows:

The Misgivings (Americana Trio from Iowa City)

See Alice (Grunge/Alternative Rock from Burlington)

Blist Her (Iowa Shoegaze from Burlington)

Visions of Terror (Midwest Modern Metal from Ceder Falls)

THE BOOZY BOOK CLUB

JANUARY 6 | 6 - 8 PM

THE BEANCOUNTER COFFEEHOUSE & DRINKERY

Join us each month for a delicious pairing of books, cocktails, conversation, and cozy community vibes at The Beancounter! The Boozy Book Club will meet the first Tuesday of each month. Every meeting features a memoir by a beloved food personality – and a themed cocktail crafted just for the occasion.

For more information visit:
BeancounterCoffeehouse.com.

LADIES NIGHT AT MEMORIAL AUDITORIUM

JANUARY 8 | 10 PM

BURLINGTON RIVERFRONT ENTERTAINMENT

Premier Ladies Night Event Is Coming to Burlington on Saturday, January 10th! Tickets on sale now.

Open to Ages 21+ Doors open at 7PM

For more information visit: BurlingtonRiverfront.org.

SOUNDS OF THE PAST

JANUARY 17 | 10 AM - 12 PM

DES MONES COUNTY HISTORICAL SOCIETY

Doors open at 9:45 AM for this fantastic experience in the Heritage Center's atrium.

Bob your head along as Executive Director Colton Overton plays ragtime pieces on the historic Martin Bruhl Piano.

Please enter through our main entrance on the east side of the building at the top of the ramp.

For more information visit: DMCHS.org

REVEL IN RED AT THE CAPITOL THEATER

JANUARY 17 | 7 10 PM

The Capitol Theater is excited to announce the return of Revel in Red to start the theater's 14th year of providing Burlington and surrounding communities with quality programming.

This year's performance will be another great night of classic rock music but it will also be a night to remember long time Revel in Red musician their bassist Pete Ramsey that lost his life this past summer in a tragic accident.

The January performance will provide our community the opportunity to commemorate the legacy of Pete Ramsey as a musician and great human being that rocked on stage and was willing to take time for those requesting it.

The Capitol will accept good will donations the night of the performance that will go to his family.

Submit member information to [Brenda Levitt at \[blevitt@greaterburlington.com\]\(mailto:Brenda.Levitt@greaterburlington.com\)](mailto:Brenda.Levitt@greaterburlington.com)

MEMBER SPOTLIGHT



SG General Contractor
CONSTRUCTION

- Design
- Engineering
- Construction

2204 West Mt. Pleasant Street
West Burlington, IA 52655
319-752-7154
ron@sgconstructco.com
www.sgconstructco.com

**FIRE AND WATER
CLEAN UP & RESTORATION**
24 HOUR EMERGENCY SERVICE



COMPLETE MOVE-OUTS
MOLD MITIGATION & REMEDIATION
TRAINED, UNIFORMED PROFESSIONALS



SERVPRO
OF BURLINGTON
319-754-8050
WWW.SERVPROBURLINGTON.COM

Right **Care.** Right **Place.** Right **Here.**



Great River
HEALTH

For a full list of healthcare services, visit our website
greateriverhealth.org



WEST BURLINGTON
FORT MADISON
MOUNT PLEASANT

FORUM FRIDAY

Kick Off the Year with - Friday Forum!
Friday, January 16 at 8 AM
Greater Burlington Partnership
in the Wineyard Board Room or Virtual

Don't miss the first Friday Forum of 2026! Area legislators will provide firsthand updates from the Statehouse, highlight priority bills, and answer questions about issues affecting local businesses and our community.

Mark Your Calendar for Future Forums:

- February 13 • 8 AM
- March 13 • 8 AM



All Chamber of Commerce members are invited to join the discussion in person or listen in online.



Chamber of Commerce
 Economic Development
 Convention & Visitors Bureau
 Downtown Partners, Inc.

Follow The Partnership



Your Trusted Partner
 Let us help you reach your financial goals.



Member FDIC

319-753-9100 | tworivers.bank