

The

January 2022

GREATER BURLINGTON PARTNERSHIP NEWSLETTER VOL. 102 NO. 1

# PARTNERSHIP





## The Best is Yet to Come

by Della Schmidt

The theme for the January 2022 Annual Dinner is 'The Best is Yet to Come,' an appropriate, optimistic outlook on the future. Greater Burlington continues to position for the future and the Greater Burlington Partnership is ready to lead the charge.

Downtown Burlington will undergo significant activity throughout 2022 and into 2023. The TIGER construction project along Jefferson Street, portions of Main Street and at the Riverfront will transform the Downtown area. Additionally, TAMA Two and 700 Block, both on Jefferson Street, the MERGE development project on 3rd Street, and redevelopment of Churchill on Valley Street will result in a plethora of new residential and commercial rental space. Once completed these multi-million dollar investments will result in cementing Downtown Burlington as the heartbeat of the community. The buzz of activity will be tangible to visitors and residents alike. Downtown Partners, Inc (DPI) is prepped and ready to lead the way through the construction activities until the projects are complete and Downtown is sparkling like a diamond.

Greater Burlington Convention and Visitors Bureau will see significant activity in 2022 as well. Great anticipation surrounds the summer season of boat dockings as this year will be the first of many welcoming Viking River Cruises. Between the American Queen, American Duchess and Viking, the Riverfront will see 23 boat dockings! The CVB staff and volunteers are hard at work making upgrades at the Port of Burlington Welcome Center, providing training to the hospitality businesses and tour destinations, and finalizing plans for wayfinding signage to help the thousands of river cruise guests have the best experience in Greater Burlington. Sports tourism continues to grow and is projected to have an uptick from last year as the industry continues to recover from the impacts of the pandemic.

The Chamber of Commerce recently launched significant new member-value tools to the GreaterBurlington.com website. In the coming months the site will provide even more value as chamber members will add job postings, online coupons, and enhancements to member listings such as videos, logos, and more. Quality of Life videos promoting Greater Burlington will add to the workforce recruitment efforts, and residential and commercial property rental listings will make GreaterBurlington.com the one-stop information source for both locals and newcomers.

Grow Greater Burlington remains focused on the workforce challenge. Building on the strengths of established programs, new pilot projects are under development with emphasis on recruiting teens to the workforce now while exposing them to career opportunities for the future. New initiatives to attract talent to the community from other parts of Iowa and the Midwest are also being developed. Growing the population, creating career pathways for youth, and retaining current talent will all be part of the long-term solution. Closely tied to workforce are the issues of housing and childcare. Watch for a new Housing Study in 2022, which will lead to recommendations and strategies to spur investments in new homes and redevelopment of existing properties.

Contact the Greater Burlington Partnership to learn more about these and other plans for the year ahead. "The best is yet to come" – much more than words from an old Frank Sinatra song; it is a statement of fact for the Greater Burlington communities.



**Steven Brody**  
Chamber of Commerce  
Exec. Dir. 319-208-0054  
[sbrody@greaterburlington.com](mailto:sbrody@greaterburlington.com)



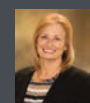
**Michael Dear**  
Convention & Visitors Bureau  
Exec. Dir. 319-208-0045  
[mdear@greaterburlington.com](mailto:mdear@greaterburlington.com)



**Barb Gerst**  
Director of Finance  
319-208-0044  
[bgerst@greaterburlington.com](mailto:bgerst@greaterburlington.com)



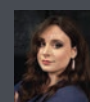
**Chris Gram**  
CVB Program Coordinator  
319-752-8731  
[cgram@greaterburlington.com](mailto:cgram@greaterburlington.com)



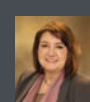
**Cindy Henry**  
Member & Guest Services Manager  
319-208-0052  
[chenry@greaterburlington.com](mailto:chenry@greaterburlington.com)



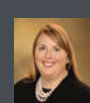
**Jeremy Hess**  
Dir. of Economic Development  
319-208-0050  
[jhess@greaterburlington.com](mailto:jhess@greaterburlington.com)



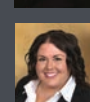
**Mac Holford**  
Events Manager  
319-208-0040  
[mholford@greaterburlington.com](mailto:mholford@greaterburlington.com)



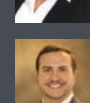
**Brenda Levitt**  
Graphic Designer  
319-208-0047  
[blevitt@greaterburlington.com](mailto:blevitt@greaterburlington.com)



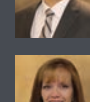
**Rachel Lindeen**  
Talent Development &  
Government Relations Director  
319-208-0046  
[rlindeen@greaterburlington.com](mailto:rlindeen@greaterburlington.com)



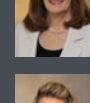
**Amy Moyner**  
Downtown Partners, Inc.  
Exec. Dir. 319-208-0056  
[amoyner@greaterburlington.com](mailto:amoyner@greaterburlington.com)



**Dustin Roth**  
Marketing & Communications Dir.  
319-208-0048  
[droth@greaterburlington.com](mailto:droth@greaterburlington.com)



**Della Schmidt**  
President & CEO  
319-208-0043  
[dschmidt@greaterburlington.com](mailto:dschmidt@greaterburlington.com)



**Anita Smith**  
Administrative Assistant  
319-208-0042  
[asmith@greaterburlington.com](mailto:asmith@greaterburlington.com)



Represents a Partnering for the Future III Initiative.

**SUBSCRIPTIONS:** Price is \$24, which is included in annual events fees. Non-members: \$4 per issue. Periodicals postage paid at Burlington, Iowa.  
**POSTMASTER:** The Partnership is published monthly by the Greater Burlington Partnership 610 North Fourth Street, Suite 200, Burlington, Iowa 52601.  
**POSTMASTER:** send address changes to Greater Burlington Partnership (USPS 001-692) 610 North Fourth Street, Suite 200, Burlington, Iowa 52601.



# ON THE COVER

## 2022 Board Chairs

Each year the Board of Directors is tasked with setting the policies and goals of the Greater Burlington Partnership. The organization is unique in structure and includes the Chamber of Commerce, Economic Development, Convention & Visitors Bureau, and Downtown Partners, Inc. all under the collective umbrella of the Greater Burlington Partnership. For this community, the collaboration has proven to be an effective and great strategy.

To accomplish this task, each division has a separate board of directors, segregated funds and a unique mission statement guiding their way.

During their one year term, division chairs represent the organization at a variety of functions and collectively meet to ensure the organization is running efficiently and effectively.

When you have an opportunity, please thank these individuals for their time and dedication to the organization and the community.

*The chairs of each board of directors are on this month's cover. In 2022, the chairs of the divisions are (from left to right):*

- **Tim Lundgren,**  
**Farm Bureau Financial Services - Tim Lundgren**  
*Chamber of Commerce Board Chair*
- **Todd Darnall, McConnell Lofts**  
*Downtown Partners, Inc. Board Chair*
- **Chris Lee, Des Moines County Conservation**  
*Convention & Visitors Bureau Steering Committee Chair*
- **Charlie L. Walsh,**  
**Farmers & Merchants Bank & Trust**  
*Economic Development Board Chair*

# Legislative Priorities

On December 21, the Chamber of Commerce Board approved the 2022 Legislative Priorities. The Government Relations Committee has identified four key priorities this session.

- Workforce
- Talent Attraction
- Housing
- Infrastructure

A full report can be found at [GreaterBurlington.com](http://GreaterBurlington.com) or contact Rachel Lindeen for a copy.

## Eggs & Issues - January 14 at 8 AM

Attendees will hear from elected officials as they discuss the hot topics for the upcoming Legislative session in Des Moines. Join the conversation in person at the Greater Burlington Partnership or via Zoom. Watch your inbox for additional details.



## Southeast Iowa Days - Des Moines, February 2 & 3

Join the delegation of Southeast Iowa business and community leaders in Des Moines February 2 & 3. Attendees will share their thoughts regarding 2022 legislative priorities and will hear the latest news from the State of Iowa.

**Who should attend:** Any chamber member interested in advocating for pro-business legislation and those interested in a hands-on experience at the State Capitol while the 2022 Legislative Session is in full-swing.

**Cost:** \$135 per person, which covers the legislative luncheon, reception and breakfast with legislative leadership, plus numerous Q&A sessions highlighting Southeast Iowa's key issues.

**Travel details:** Participants are responsible for their own travel and can make lodging arrangements by calling Embassy Suites at 515-244-1700 and mentioning "Southeast Iowa Days." A block of rooms is reserved until January 3.

*For more information and to RSVP, contact Rachel Lindeen.*

**BECKERS**  
JEWELERS  
*For moments that matter!*

FULL SERVICE JEWELERS  
[www.beckerdiamonds.com](http://www.beckerdiamonds.com)

**Energy For The Future**  
**Big River Resources**  
Highway 34 & Beavertale Rd  
West Burlington  
Phone: 319-753-1100

**BigRiverResources.com**

**ETHANOL**

*Proudly Made In The U.S.A.*

**CLEANER BURNING FUEL  
GOOD FOR YOU.  
GOOD FOR THE ENVIRONMENT.**

www.BigRiverResources.com

**PASSPORT** Passport to **ADDINGTON PLACE**  
*Exceptional Care. Extraordinary Living.* OF BURLINGTON  
Assisted Living & Memory Care

The Next Step of Your Life Journey is  
*Addington Place of Burlington!*

**(319) 752-0260**  
[www.AddingtonPlaceBurlington.com](http://www.AddingtonPlaceBurlington.com)  
Visit Us At: 5175 West Ave., Burlington, IA 52601

**KENNY'S ROLLER RANCH & REC CENTER**

- SKATING • PARTIES • GOLF
- BATTING CAGES
- BASKETBALL BANKSHOT

**319-752-2043**  
**KENNY'S ROLLER RANCH.COM**  
8989 Koestner Avenue | Burlington, IA 52601



# JEFFERSON ST FARMERS MARKET

Vendor applications for Jefferson Street Farmers Market will be opening soon. The market will begin in May and run through September. Follow the Jefferson St Farmers Market Facebook page for updates on the 2022 market.

### THANK YOU TO THE FOLLOWING 2022 MONTHLY FARMERS MARKET SPONSORS:

- May - Farmers Savings Bank
- June - AIM Credit Union
- July - U.S. Bank, N.A.
- August - jerilyn Horn Kitchen & Bath Design Company LLC
- September - Marty Mogk, Deery Brothers, Inc.



REPURPOSED ♦ ARCHITECTURAL SALVAGE ♦ ANTIQUE ♦ HANDMADE  
jefferson street - downtown burlington

## A VERY VINTAGE MARKET

Vendor applications for A Very Vintage Market will be opening soon at GreaterBurlington.com. The market will take place on Saturday, July 16. Follow the A Very Vintage Market Facebook page for news about the 7th annual event.

### THANK YOU TO THE FOLLOWING A VERY VINTAGE MARKET SPONSORS:



- Entertainment - QC Roof Drs.
- Map - Hopefully Yours
- Media - Titan Broadcasting & Digital Group 101.7 The Bull KBKB-FM and The New Mix 107.3 KGRS



# PUT IT ON DOWNTOWN'S TAB

Award winning "Put It On Downtown's Tab" will be back to support the local eateries and drinkeries in Downtown Burlington. Watch the Downtown Burlington Iowa Facebook page to see where the tab will be opened next!

# TIGER Grant Update . . .

The TIGER Project is moving forward. Construction work is continuing on the Riverfront and Jefferson Street. (800 block is back open!)

Follow the most recent updates at: [GreaterBurlington.com/TigerGrant](http://GreaterBurlington.com/TigerGrant)

## You are the Leader!

**PRESENTED BY: STEPHANI SMITH  
STEPHANI & CO.**

### Key Objectives:

- Improve your effectiveness as the leader
- Enhance awareness of factors that influence your leadership style
- Identifying specific steps you will take to develop and enhance your own leadership skills

## Success in BUSINESS

DISCOVER NEW BUSINESS OPPORTUNITIES



Stephani Smith  
Stephani + Co. Consulting  
and The Local Reserve

**When:** January 20, 12 - 1 PM **Cost:** FREE benefit of Chamber of Commerce membership

**Where:** Virtual Auditorium

**Summary of Presentation:** For growing your business, the most relevant leadership skills for you to develop include (but are not necessarily limited to): developing self-awareness, creating the vision and values of your business, inspiring others to embrace those visions and values, recruiting and retaining effective individuals and teams and making a positive contribution to your community.

**ABOUT Stephani Smith:** Stephani Smith is the Founder and CEO of both Stephani + Co. Consulting, a small and large business and manufacturing consulting firm and The Local Reserve, a digital media and production company.

She is also the Business and Entrepreneurship Professor at Southeastern Community College and for the Goldman Sachs 10K Small Business Initiative, where she has the honor of teaching students and current business owners how to start and grow a business.

*\* More information and registration at [GreaterBurlington.com](http://GreaterBurlington.com).*



## Marketing Intern - JAKE NICKELL

Jake is the new intern at the Greater Burlington Partnership. He has already started helping with various projects such as writing social media posts and even a radio ad. Raised in Burlington, he dabbles in creative pursuits such as art, music and writing. He is eager to learn about graphic design and is pursuing an Interactive Social Media Marketing degree at Southeastern Community College. Jake is excited for the experience that this internship will give him.



Premier Sponsor:



Reception Sponsor:

Two Rivers Bank & Trust

# THE BEST IS YET TO COME

**What:** The theme for this year's Annual Dinner is "The Best is Yet to Come". Grab your business attire and join your fellow Chamber of Commerce members in celebrating the winners of several prestigious community awards, remembering the many great accomplishments of 2021, and reminding us all that the best is yet to come. In addition to a delicious dinner and drinks, there will be a live auction, a silent auction, and themed raffle baskets for you to enjoy.

**When:** January 28

Doors open at 5:30 PM, with appetizers and drinks beginning at 6 PM.

**Where:** Catfish Bend Convention & Event Center,  
3001 Winegard Dr

To Reserve a table, half table, or individual tickets, contact Cindy Henry.

Greater Burlington Partnership,

On behalf of Sterzing Food Company and each of our employees, I wish to sincerely offer our deep appreciation to you for the acknowledgement of Sterzing's as the Local Manufacturer of The Year.

The trickle up from the award has led to many responses.

The local paper picked up the story.

The article was syndicated and featured in the Des Moines Register

Countless e-mail responses from potential customers seeking our products throughout the state.

Alliant Energy followed up with a business documentary featuring Sterzing Food Company as a partner with Alliant and an end user of their services. The video should be finished by year end and will be featured on their web site, and we will be allowed to feature the clip on our Facebook and website as well.

The local response from our customers, family and friends who offered their congratulations on the award has been overwhelming.

If you have ever doubted the impact that the Partnership provides, I can attest to the tangible results that your influence has provided. Please continue to promote and advance the business culture that we have here in Southeast Iowa and beyond.

Thank You once again,

Sincerely,

Craig A. Smith

President

Sterzing Food Company

Gary J. Schmeiser

C.F.O.

Sterzing Food Company

I hope you enjoy a little sampling of our products.

This letter beautifully demonstrates the impact of membership in the Chamber of Commerce and the Greater Burlington Partnership.

Thank you to  
Sterzing Food Company



# Year in Review

The Greater Burlington Partnership's 2021 Annual Report will be distributed at the Annual Dinner on January 28 and in the mail in late January.

The Annual Report features quantifiable objectives for each of the four Partnership divisions as well as facts about the organization. It is important that the organization be held accountable to its members, investors and stakeholders.

We encourage you to share the publication with your employees and display it in your waiting room.

If you are not the primary contact for your business, you may view the digital version online at [GreaterBurlington.com](http://GreaterBurlington.com).

Thank you to all who volunteer and are a part of The Partnership. Exciting things are happening, and you are helping to make that possible!



***Pictured L to R:***

Jon Hart, Edward Jones - Jon Hart  
Chris Lee, Des Moines County Conservation  
Sue Sorensen, Farmers & Merchants Bank & Trust  
Jerry Johnson, Burlington Capitol Theater

## 2022 Leadership

### Chamber of Commerce Officers

Chairperson -

Tim Lundgren, Farm Bureau Financial Services

Chairperson - Elect -

Christin Pritchard, Southeast Iowa Regional Medical Center

Past Chairperson - Jon Hart, Edward Jones

Treasurer - Gina Crabtree, YMCA

### Economic Development Officers

Chairperson - Charlie Walsh, Farmers & Merchants Bank & Trust

Chairperson - Elect - Eric Benne, Two Rivers Bank & Trust

Past Chairperson - Sue Sorensen, Farmers & Merchants Bank & Trust

Treasurer - Bob Huffman, Huffman Farm & Home

### Convention & Visitors Bureau Officers

Chairperson - Chris Lee, Des Moines County Conservation

### Downtown Partners, Inc. Officers

Chairperson - Todd Darnall, McConnell Lofts

Chairperson - Elect -

Mercedes Ponce, Titan Broadcasting & Digital Group

Past Chairperson - Jerry Johnson, Capitol Theater

Treasurer - Tom Burch, Farmers & Merchants Bank & Trust

# MEET THE NEW LEADERSHIP



## Chamber of Commerce, Chairman

**Tim Lundgren**, Farm Bureau Financial Services - Tim Lundgren

**Goal:** The Chamber of Commerce is one of the most essential voices for our area in advocating for our local businesses, business owners, and their employees. I look forward to working alongside the Partnership staff and membership to support our neighbors as we strive to succeed in what has been shown to be a challenging and unpredictable environment.

**Why:** I fully embrace what a great community we have, and my respect for the offerings we provide for our populace has only increased: art, entertainment, dining, shopping, industry, education, housing, etc. The economic impact, social significance, and quality of life influences our community provides cannot be understated. We are truly a great place to live, work and play.



## Economic Development, Chairman

**Charlie L. Walsh**, Farmers & Merchants Bank & Trust

**Goal:** It's an honor to be the incoming Chairperson for Grow Greater Burlington. Our goal continues to be to make Greater Burlington a thriving community that is a premier place to work, grow a business and raise a family. The momentum is with us, and I look forward to helping connect business, industry, talent and investment.

**Why:** Being a part of a team of volunteer leaders who desire our community to succeed is a privilege. Lending my efforts to the dedicated team of professionals at the Partnership is my way of investing in our future.



## Convention & Visitors Bureau, Chairman

**Chris Lee**, Des Moines County Conservation

**Goal:** There have been a lot of changes lately. The pandemic turned the tourism industry on its head. The CVB changed directors. Things have been crazy for everyone. And I see that as an opportunity. So this coming year, we're going to embrace that chaos and from it, we're going to build systems, processes, and relationships that allow us to do what we do best – show the world what a great place Greater Burlington is to visit – and do it better than we've ever done before.

**Why:** I accepted the role as chairperson because I want to be part of seeing the organization through these changes and help it come out the other side stronger than ever before.



## Downtown Partners, Inc., Chairman

**Todd Darnall**, McConnell Lofts

**Goal:** My goal for Downtown Burlington in 2022 is to create a downtown district that connects all businesses within downtown, promoting and serving not only our community but attracting the greater region as well. The TIGER Grant project and continued investment in upper story residential and commercial space development is very exciting. Although such growth can create challenges in the short term, the long term benefits are truly great. I am excited to help facilitate the development.

**Why:** I am extremely proud of the progress we have made within our downtown and very excited for the future opportunities it holds. I am pleased to serve as the chairperson for 2022 and am very excited to work together with the board, volunteers, and stakeholders that help to make downtown Burlington the special place it is.

**JOIN US AFTER WORK**



## **BUSINESS AFTER HOURS**

### **Port of Burlington Welcome Center**

**400 N Front Street, Burlington**

**January 13, 5 - 7 PM**

JOIN US WITH YOUR CO-WORKERS TO BUILD YOUR NETWORK  
AT BUSINESS AFTER HOURS AND GROW YOUR BUSINESS!

## **Know your 2022 Local Elected City Officials**

### **City of Burlington**

**Burlington City Hall: 319-753-8124**

- Jon Billups, billupsj@burlingtoniowa.org
- Robert Critser, critserr@burlingtoniowa.org
- Lynda Graham-Murray, murrayl@burlingtoniowa.org
- Bill Maupin, maupinB@burlingtoniowa.org
- Matt Rinker, rinkerm@burlingtoniowa.org

### **City of West Burlington**

**West Burlington City Hall: 319-752-5451**

- Mayor – Ron Teater – teaterr@westburlington.org
- Therese Lees – leest@westburlington.org
- Andy Crouner – crownera@westburlington.org
- Kathy Newberry – newberryk@westburlington.org
- Melanie Young – youngm@westburlington.org
- John Johnson – johnsonj@westburlington.org

**WORLD**  
**TWO RIVERS**  
**INSURANCE**  
IS NOW  
**WORLD**  
**INSURANCE**

Large Resources.  
Local Relationships.

[www.worldinsurance.com](http://www.worldinsurance.com)

Visit the showroom!

**Great Western Supply Co.**  
**(319) 752-2637**  
701 S. Roosevelt Ave.  
Across from Notre Dame Schools

Towels, tissue, can liners, soap & more! All of your Janitorial Supply needs under one roof!

[www.GreatWesternSupply.com](http://www.GreatWesternSupply.com)  
\* Formerly Ebert Supply

### **GET YOUR 2022**

### **COMMUNITY GUIDES**

Call us to order your **Free** guides.  
**319-752-6365**



**View online at GreaterBurlington.com**

## Upcoming YP Events

### Lunch & Learn - TAX PREP Greater Burlington Partnership

12 PM

Mark your calendar for January 6, and join us for the first Lunch & Learn of the year! Avoid the tax season stress this year by letting the experts at Menke & Company teach you everything you need to know. We'll provide the lunch, you provide the unanswered questions!

*For more information or to RSVP, contact Mac Holford.*

Find more details about upcoming events in The Voice, the Young Professionals eNewsletter, or on the Facebook Group page by using the QR code.



#### 2022 Platinum Sponsors:

**CNH Industrial**

**QC Roof Drs.**



## YP SPOTLIGHT Kansha Tiwari

Employer: Southeast Iowa Regional Planning Commission

YP Member: 3 years

**Why did you join YP?** I joined YP to meet other young professionals in the area. Life gets really busy and it feels convenient to start living in your own 'bubble' with a small group of friends or people we know.

**Which community organizations/events do you volunteer for?** I volunteer for Greater Burlington Partnership's Young Professional group, as well as Downtown Partners, Inc. As a regional planner, I have assisted the community in writing several community/downtown grants, participated in community planning projects such as downtown brownfield area-wide plan, developed Greater Burlington bike and pedestrian plan, and implemented community design projects.

**Do you hold leadership positions with any of the above organizations?** I serve as a board member on Downtown Partners Inc. I also serve on the YP Leadership Council. I nominated the City of Burlington for an American Planning Association award this year.

**What do you enjoy most about Greater Burlington?** I grew up in a small town in India and have always loved the feeling of being in a community that is close-knit and has a relatively slower pace of life. The opportunities that the Greater Burlington area provides in terms of a work-life balance are amazing!

**Share one thing about yourself that makes you stand out from other YP members.** I might be the only international YP member. I would love to see more diversity and bring together more young professionals from the area who might be away from their families and are looking to build their network.

### Thinking of joining YP?

Email [youngprofessionals@greaterburlington.com](mailto:youngprofessionals@greaterburlington.com) for more information.

### Greater Burlington Young Professionals

A professional and social group for individuals between the ages of 21 - 40.

# WELCOME NEW MEMBERS

Please welcome these new Chamber of Commerce members by sending an email, liking their Facebook page or visiting their website. Even better, stop by to introduce yourself, exchange business cards and help grow their network as well as your own!

## Bart Howard Lounge

501 N 4th, Burlington, 319-752-7449, dmchs.org

Kaela Reynolds, Event Coordinator, dmchs@dmchs.org

This 1950's style night club features regional performances throughout the year. Located in the Des Moines County Heritage Museum, it is dedicated to the preservation of American cabaret music.

## Great Western Supply Co.

701 S Roosevelt Ave, Burlington, 319-752-2637, greatwesternsupply.com

Nicole Farrier, Operations Manager, office@greatwesternsupply.com

The janitorial industry's best source for paper towels, toilet tissue, cleaning chemicals, equipment, and new technology. Great Western Supply Co. provides the technical expertise that enhances value to building occupants.

## Luxx Limited

Burlington, 319-572-7921, luxxlimited.com

Matt Messer, CEO, matthew93319@gmail.com

From renovation solutions to estate management services - Luxx Limited offers a full range of real estate clean out services from dumpster rental to complete estate property management. Solutions for the ever-changing real estate market.

## Traces Boutique

403 Jefferson St, Burlington, 319-316-3316, tracesboutique.com

Tracy Dunn, Owner, tracesboutique422@gmail.com

Traces is a sustainable clothing and accessory boutique. All items in the shop are of a sustainable nature. Traces' goal is to promote sustainability in the greater Burlington area.



## READY GOLF LLC

Ready Golf LLC celebrates their Grand Opening



## LUXX LIMITED

Luxx Limited celebrates their Grand Opening

## THE MIDWEST MADE EASY.

Traveling from Burlington just got easier with daily flights to St. Louis & Chicago O'Hare. For seamless connections, book both your Cape Air flight and your connecting flight directly on aa.com or united.com.



Cape Air

SOUTHEAST IOWA  
REGIONAL AIRPORT

DAILY FLIGHTS  
Chicago and St. Louis  
capeair.com / 800-CAPE-AIR

FIRE AND WATER  
CLEAN UP & RESTORATION  
24 HOUR EMERGENCY SERVICE



COMMERCIAL OR RESIDENTIAL  
COMPLETE MOVE-OUTS  
MOLD MITIGATION & REMEDIATION  
TRAINED, UNIFORMED PROFESSIONALS

SERVPRO  
OF BURLINGTON

319-754-8050 OR 877-754-8050  
WWW.SERVPROBURLINGTON.COM





Member

**NEW**  
Member Benefit!

# BUSINESS BRIEFCASE

Do you have something special to announce? A work anniversary, a retirement, a special award or recognition, a conference attended, a sales record, a name change, a new location? We would love to share this with our membership. Please contact Brenda Levitt.

## **Sunnybrook Assisted Living name change: Addington Place of Burlington, Assisted Living & Memory Care**

We are excited to announce that our community is now managed by Jaybird Senior Living. With the change in management comes an exciting name change. We will be known as Addington Place of Burlington. Same friendly faces, same quality care, just a new name and a few new signature programs to add to our existing services. Stay tuned for upcoming social media posts as we introduce you to our Red Carpet Philosophy, Seniors First Safety Program, and Dare To Dream Program. Check out our new website: [AddingtonPlaceBurlington.com](http://AddingtonPlaceBurlington.com).

## **Grand Opening of FunCity Resort Hotel**

The FunCity Resort hosted a grand opening celebrating the opening and remodel of the former Pzazz! Resort Hotel which originally opened in 1978. FunCity Resort prides itself on operating with the same mission and values as the founding creators did. The staff at FunCity Resort are excited for the future of the complex as a lot of incredible people are working daily to make sure that FunCity continues to serve the Burlington community and create lasting memories for families and visitors who come to enjoy all that there is to offer!

## **Two Rivers Insurance is WORLD Insurance on January 1, 2022**

Still the same people, same locations, same phone number, and still committed to growth and employment in Iowa. Find them at their same location, 14 North Main Street Burlington, IA 52601.

## **Community Foundation of Des Moines County**

Three individuals have founded the Century Landmark Society for the Community Foundation of Des Moines County with each donating \$100,000 to the Margaret Hansen Community Impact Fund to increase the Community Foundation's ability to assist with important projects throughout Des Moines County. Keith Schulz, Jerry Parks and Dennis Wilson, members of the board of directors of the Community Foundation, founded this Society to provide the Impact Fund during their lifetimes with funds that will, together with their investment returns, remain in Iowa permanently to support projects in Des Moines County. They hope that their donations will be an example for others who are able to do the same and become part of the Century Landmark Society.

## **RuhlHome.com Ranks Number 4 in Nation**

*RuhlHomes.com Ranks Nationally for Best Overall Website, Best Design, Best Community Page, and Best Property Detail Page*

For the third year in a row, RuhlHomes.com has been named one of the leading real estate websites in the nation. RuhlHomes.com was judged against hundreds of other residential brokerages across the country, and the website received four designations. RuhlHomes.com ranked number four for the third consecutive year for the best overall website, number five for best design, number three for best community page, and number one for best property detail page.

# JANUARY Events

**6**  
YP Lunch & Learn - Tax Prep  
Greater Burlington Partnership  
12 PM  
GreaterBurlington.com

**12**  
Greater Burlington Leadership  
Group Project & DEI Day  
GreaterBurlington.com

**13**  
Business After Hours  
Port of Burlington Welcome Center  
5 - 7 PM  
GreaterBurlington.com

**14**  
Eggs & Issues  
Greater Burlington Partnership  
8 - 9 AM, Zoom Optional  
GreaterBurlington.com

**14**  
Sweet Dreams & Honky Tonks  
Capitol Theater, 7:30 PM  
BurlingtonCapitolTheater.com

**14**  
Winter Fair Fundraiser  
Harvest View Farms, 5 PM  
DesMoinesCountyFair.com

**15**  
Magician Travis Nye  
Capitol Theater, 7 PM  
BurlingtonCapitolTheater.com

**20**  
Success in Business Seminar  
You Are the Leader!  
Virtual 12 PM  
GreaterBurlington.com

**22**  
Bald Eagle Watch  
Port of Burlington, 10 AM  
DesMoinesCounty.iowa.gov

**25**  
YP 505 Social, TBD  
5:05 PM  
GreaterBurlington.com

**28**  
Annual Dinner, The Best is Yet to Come  
Catfish Bend Convention & Event Center  
6 PM  
GreaterBurlington.com

See More at  
[GreaterBurlington.com/Events](http://GreaterBurlington.com/Events)



## STANDARD OF BEVERDALE

WHAT ARE YOU DREAMING OF? LET US HELP YOU BUILD IT.



- ROOFING
- FENCING
- MATERIALS
- PLUMBING
- WINDOWS
- HARDWARE
- DOORS
- ELECTRICAL
- SIDING
- APPLIANCES

WE SUPPLY THE BEST PRODUCTS TO HELP YOU BUILD THE HOME OF YOUR DREAMS

WE CARRY YOUR FAVORITE BRANDS

Now including  
the largest  
selection of  
Carhartt in  
Southeast  
Iowa



carhartt®

FOLLOW US ON  319-754-5174

STANDARD OF BEVERDALE 

11194 TWIN PONDS DRIVE  
WEST BURLINGTON, IA 52655 

 **Menke & Company**  
CERTIFIED PUBLIC ACCOUNTANTS  
Integrity & Experience at Work for You



- ◆ Tax Planning & Preparation
- ◆ Accounting & Bookkeeping
- ◆ Full-Service Payroll
- ◆ Controllership Services
- ◆ Audit & Review
- ◆ Business Consulting

320 N. Third, Ste 300, Burlington, IA 52601  
319-753-2000 • [Menkeco.com](http://Menkeco.com)

Waiting for past due bills to be paid, but getting no response?

Time to call  
**Financial Adjustment Bureau Inc.**  
The professionals will take care of those past bills and bad checks for you!

Commercial • Professional • Retail  
No Collection ~ No Charge

**FINANCIAL  
ADJUSTMENT  
BUREAU INC.**

Contact Marty Dean   
612 Jefferson • Burlington, IA  
**319-753-6756** 

 **electronic  
engineering**



- Motorola Two-Way Radios
- Security Cameras/ CCTV
- Alarm & Monitoring Systems
- Public Address Systems

**We Provide**

- Technical service, maintenance, and support
- Software and support agreements
- Site survey & Elevations
- System Design
- Turnkey Installation

1122 Broadway St, West Burlington | 319-385-7650  
[www.eengineering.com](http://www.eengineering.com)

**SG** General Contractor

CONSTRUCTION

- Design
- Engineering
- Construction

2204 West Mt. Pleasant Street  
West Burlington, IA 52655

319-752-7154

[ron@sgconstructco.com](mailto:ron@sgconstructco.com)

[www.sgconstructco.com](http://www.sgconstructco.com)

## The Burlington Beacon: Iowa's Newest Newspaper

The Burlington Beacon launched a print edition on September 30, and enthusiasm for this weekly publication has spread throughout Burlington and the surrounding area. After more than doubling paid subscriptions within the first weeks, the paper looks for the number of subscribers to increase rapidly once postal delivery is available. Future plans include obtaining periodical mailing privileges, growing our readership, and building relationships with current and potential advertisers. Please contact 319-750-0965 or [burlingtonbeacon@gmail.com](mailto:burlingtonbeacon@gmail.com) to discuss subscriptions, advertising, or news ideas.

## Des Moines County Fair Winter Fair Fundraiser January 14, 5 - 10 PM

The Winter Fundraiser begins at 5 PM with cocktail hour, followed by a delicious, homemade meal, silent and live auctions, and an evening of comedy.

Tickets are \$20 and available by calling 641-295-3194. Adults age 21 and over only. All proceeds from this event benefit the fair's multi-year building program. For more information, visit [desmoinescountyfair.com](http://desmoinescountyfair.com) or follow Des Moines County Fair on Facebook.

## Sweet Dreams & Honky Tonks January 14, 7:30 PM

Tom Waselchuk & Lindsey Giese bring the music - and the lives - of country music superstars Patsy Cline, Loretta Lynn, Johnny Cash and Hank Williams to life in this acclaimed revue. Through meticulous research, engaging storytelling, personal insights and musical artistry, Sweet Dreams & Honky Tonks invites audiences to step back in time - and into the lives of four iconic performers. For more information, visit [burlingtoncapitoltheater.com](http://burlingtoncapitoltheater.com).

## Alliant Credit Union becomes AIM Credit Union

Established in 1933, Alliant Credit Union has continually grown, welcoming several new employers and groups to our field of membership. Today, Alliant is the largest closed field of membership credit unions in Iowa!

To recognize our growth, the entirety of our membership, and continued focus on all our members, Alliant Credit Union will become AIM Credit Union effective January 1, 2022.

This evolution of our credit union allows for growth in all segments we serve including Alliant Energy, Industries, Medical, unions, educators, and many other groups in Iowa and Wisconsin.

## Annual Bald Eagle Watch January 22, 10 AM - 12 PM

Des Moines County Conservation will lead the annual Eagle Watch caravan to Lock & Dam 18 in Gladstone, IL, following a brief indoor presentation about eagles at the Port of Burlington Welcome Center.

Participants may join the caravan from the Port of Burlington to Lock & Dam 18 in their own vehicles or plan to carpool with others, or may meet the group at the dam. The Eagle Watch will last approximately 2 hours. Birdwatchers will be given instruction in eagle identification.

Binoculars will be available for loan but participants are encouraged to bring their own. Participants may leave the group at any time. There is no fee or registration required for the program.

For more information, follow Des Moines County Conservation on Facebook or visit [DesMoinesCountyIowa.gov](http://DesMoinesCountyIowa.gov).

# MEMBER SPOTLIGHT

To submit member information regarding events or promotions, please contact Brenda Levitt



Preferred Pet Containment



[dmulch@ppc1989.com](mailto:dmulch@ppc1989.com)  
319-850-1495 | [Petstop.com](http://Petstop.com)

A "collection" of bakers and producers



A farmer's market on steroids  
805 Jefferson Street  
Burlington, IA 52601

Your local source for fresh produce, delicious baked goods, meat, farm fresh eggs, and so much more

Phone (319) 759-3527

Follow us on Facebook at: The Collective Food Hub



Happy New Year!



photo by Dave Smith  
[www.accessenergycoop.com](http://www.accessenergycoop.com)



RiverPark Place  
 610 N 4th St, Ste 200  
 Burlington, Iowa 52601  
 TELEPHONE 319-752-6365  
 FAX 319-752-6454  
 info@greaterburlington.com  
 GreaterBurlington.com

# The 2022 Community Guide Now Available

Contact Michael Dear to request a supply of **2022 Burlington / West Burlington Community Guides** for your business.



View online at [GreaterBurlington.com](http://GreaterBurlington.com)

**TWO RIVERS**  
 My neighborhood.  
 My bank.  
[www.tworivers.bank](http://www.tworivers.bank)

**Greater BURLINGTON Partnership**  
 Making Connections, Building Community

Follow Us On

YouTube | Facebook | LinkedIn | Twitter | Instagram

★★★★★

**F&M BANK & TRUST**  
 Farmers & Merchants Bank & Trust

Supporting the community since 1916

[fmbanktrust.bank](http://fmbanktrust.bank)