

The

April 2023

GREATER BURLINGTON PARTNERSHIP NEWSLETTER VOL. 103 NO. 4

PARTNERSHIP



Pgs 4 & 5

Chamber of Commerce
News

Pg 6

Downtown Burlington
Blade Sign Grant

Pg 9

2023 Small Business
Breakfast Event Information

Pg 10

Community Event Funding
Grant Winners Announced



NEW HOUSING STUDY DEMONSTRATES OPPORTUNITY

by Della Schmidt

The newly released Des Moines County Housing Needs Assessment, conducted by Hanna:Keelan Associates, P.C. in collaboration with Alliant Energy, Des Moines County, Greater Burlington Partnership, the Cities of Burlington and West Burlington, and Southeast Iowa Regional Planning Commission demonstrates opportunity for new investments in new housing construction and rehab. The Needs Assessment will aide developers in securing housing incentives from the State of Iowa, guide local city governments in zoning and long-term planning, and will spur additional private sector housing investment throughout Des Moines County.

Citing the Executive Summary, abbreviated highlights of the population, housing profile and demand include:

- **Currently, an estimated 16,701 households are in Des Moines County**, consisting of an estimated 11,581 owner and 5,120 renter households. By 2028, owner households will account for an estimated 68.9 percent of all households in the County.
- **Currently (2023), the estimated population for the County is 38,667** and is projected to remain stable. A "Community Growth Initiative" relating to the creation of an increase in full-time employment opportunities along with targeted recruitment efforts could result in an increase in both population and households by 2033.
- **The overall, estimated Adjusted Housing Vacancy Rate for Des Moines County**, which includes only vacant units that are available for year-round rent or purchase, is 3.2 percent, which includes an owner housing adjusted vacancy of 3.1 percent and 3.6 percent adjusted for rental housing. **This concludes that Des Moines County has both an owner and rental housing vacancy deficiency.**
- The total estimated housing unit "target" demand for **Des Moines County Area Communities, by 2028, is 561 housing units, including 258 owner and 303 rental units**, at an estimated development cost of **\$116.7 Million**. By 2033, the total estimated housing unit "target" demand for Des Moines County Area Communities is 821 housing units, including 393 owner and 428 rental units.
- By 2028, an estimated 412 total units, including 164 owner and 248 rental units should be built in Burlington, at an estimated budget of **\$79.8 Million**.
- In addition to the Housing Unit Target Demand requirement, up to **834 units could be targeted for rehabilitation in Des Moines County at an estimated cost of \$32.6 Million**. Up to 304 housing units in the County are considered not cost effective for rehabilitation and should be demolished.

In response to the Housing Needs Assessment, the Greater Burlington Partnership is forming a long-term Housing Committee to make recommendations and promote the implementation of incentives and other tools designed to encourage housing development.

To view the entire Housing Needs Assessment Report, visit Greaterburlington.com/chamber-of-commerce/advocacy-government-relations.

To learn more about the Housing Committee, contact the Greater Burlington Partnership.



Della Schmidt
President & CEO
319-208-0043
dschmidt@greaterburlington.com



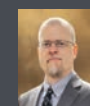
Jeremy Hess
Dir. of Economic Development
319-208-0050
jhess@greaterburlington.com



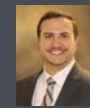
Steven Brody
Chamber of Commerce
Exec. Dir. 319-208-0054
sbrody@greaterburlington.com



Amy Moyner
Downtown Partners, Inc.
Exec. Dir. 319-208-0056
amoyner@greaterburlington.com



Chris Gram
Convention & Visitors Bureau
Exec. Dir. 319-208-0045
cgram@greaterburlington.com



Dustin Roth
Marketing & Communications
Dir.
319-208-0048
droth@greaterburlington.com



Mary Beth Sanchez
Director of Finance
319-208-0044
mbsanchez@greaterburlington.com



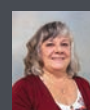
Brenda Levitt
Graphic Designer
319-208-0047
blevitt@greaterburlington.com



Marty Mogk
Member & Guest Services
Manager
319-208-0052
mmogk@greaterrlington.com



Mac Holford
Events Manager
319-208-0040
mholford@greaterburlington.com



Pamela Wright
Administrative Assistant
319-208-0042
frontdesk@greaterburlington.com



Kaylea Felland
Convention & Visitors Bureau
Prog. Coord. 319-752-8731
kfelland@greaterburlington.com

SUBSCRIPTIONS: Price is \$24, which is included in annual events fees. Non-members: \$4 per issue. Periodicals postage paid at Burlington, Iowa.
POSTMASTER: The Partnership is published monthly by the Greater Burlington Partnership 610 North Fourth Street, Suite 200, Burlington, Iowa 52601.
POSTMASTER: send address changes to Greater Burlington Partnership (USPS 001-692) 610 North Fourth Street, Suite 200, Burlington, Iowa 52601.



While trying to balance career, social outings and a family, these 21 - 40 year olds establish the goals and strategies of the Greater Burlington Young Professionals (GBYP). The members of the Leadership Council play a role in a variety of aspects of the program such as guiding the direction of GBYP, connecting business leaders with the value of attending events and mingling with new members, and selecting the Young Professional of the month.

The GBYP Leadership Council has high aspirations on membership growth as well as embracing the motto, "The Voice of the Future." They understand that the younger generations must have a voice in their community in order to continue to enjoy the place where they live, work and play.

The Council encourages employers and employees to be engaged and sign up for Young Professionals. Join in a variety of activities including Lunch & Learns, 505 Socials and Biz Tours. It is a great way to learn more about the community, network, grow professionally and have a little fun!

ON THE COVER

Greater Burlington Young Professionals

chamber of commerce News

ALL THINGS GREATER BURLINGTON PODCAST NOW IN ITS SECOND YEAR!



Over the course of two dozen episodes, Burlington/West Burlington Area Chamber of Commerce Executive Director Steven Brody has engaged in informational and educational conversations with business owners, public officials, community leaders, and Chamber of Commerce award winners. The discussions offer insight and information for the listener to have a greater appreciation for the work that the guest is involved in. The podcast further illustrates the diversity of talent in Greater Burlington.

The All Things Greater Burlington Podcast and its episodes can be heard on Greater Burlington.com, Amazon Music, Google Podcasts, Spotify, Apple Podcasts, Castbox, and Stitcher. Binge listening is highly recommended to get caught up! Make sure to subscribe to stay informed when new episodes become available.

Have a suggestion on who should be interviewed? Please contact Steven Brody.

COFFEE WITH THE CHAMBER – April 26



Chamber members are invited to Coffee with the Chamber on April 26 from 8 - 9 AM in the Wineyard Room at the Greater Burlington Partnership offices. Chamber Executive Director Steven Brody and Membership & Guest Services Manager Marty Mogk would like to meet with members to share the latest Chamber news and answer questions regarding Chamber membership benefits. Members who have not already set up Info Hub accounts are encouraged to bring laptops to the April 26 meeting so that Chamber staff can assist with getting accounts established.

Members, you are appreciated and valued. Please come to Coffee with the Chamber and explore how to maximize your Chamber investment.

RSVP to Marty Mogk.

Energy For The Future
Big River Resources
 Highway 34 & Beaverdale Rd
 West Burlington
 Phone: 319-753-1100
BigRiverResources.com

ETHANOL
Proudly Made In The U.S.A.
CLEANER BURNING FUEL
 GOOD FOR YOU.
 GOOD FOR THE ENVIRONMENT.

BECKER'S
 JEWELERS
Nobody does "I do" like we do

FULL SERVICE JEWELERS
www.beckerdiamonds.com

JAYBIRD SENIOR LIVING
senior living reimagined

ADDINGTON PLACE
 OF BURLINGTON
 Assisted Living & Memory Care

(319) 752-0260
www.AddingtonPlaceBurlington.com
 5175 West Ave., Burlington, IA

KENNY'S ROLLER RANCH & REC CENTER

- SKATING • PARTIES • GOLF
- BATTING CAGES
- BASKETBALL BANKSHOT

319-752-2043
KENNYSROLLERRANCH.COM
 8989 Koestner Avenue | Burlington, IA 52601



Matthew Rinker
State Representative, District #87



Taylor Collins
State Representative, District #95



Jeff Reichman
State Senator District #50



Mark Lofgren
State Senator District #48



FRIDAY FORUMS – April 21 at 8 AM

Join fellow Chamber members and the Government Relations Committee for the final Friday Forum of the 2023 Iowa Legislative Session. Southeast Iowa State Senators and Representatives will be on hand to provide feedback on the outcome of bills and issues.

Invitations have been extended to Representatives Matt Rinker and Taylor Collins, and Senators Jeff Reichman and Mark Lofgren.

Join the conversation in person at the Greater Burlington Partnership or via Zoom.

For additional details, contact Steven Brody.

SOUTHEAST IOWA DAYS – WASHINGTON D.C. - JUNE 13 **SAVE THE DATE**

Each year, representatives from Des Moines, Henry, Lee, and Louisa Counties travel to our Nation’s Capitol to bring our business voice to Washington D.C. Once again, the Southeast Iowa delegation will meet and discuss important federal issues with Senator Chuck Grassley, Senator Joni Ernst, and Congresswoman Marianne Miller-Meeks. In addition, there will be an informational visit with the U.S. Chamber of Commerce. Topics are typically but not entirely centered around transportation, infrastructure, economic development, regulatory, and fiscal policy.

Those interested in joining the Southeast Iowa delegation or seeking more information, please contact Chamber of Commerce Executive Director Steven Brody.

CHAMBER OF COMMERCE 2023 MEMBER SATISFACTION **SURVEY SUMMARY HIGHLIGHTS**

- Business After Hours was the highest program/event marked for participation in the past year. The Annual Dinner, Committee involvement, Friday Forums, and Small Business Appreciation Event round out the top 5.
- Friday Facts and Partnership Newsletter are the most utilized benefit/service
- 37% of respondents have been Chamber members for more than 20 years
- 89% think that the Chamber of Commerce being the voice of business is very important or important
- 88% believe that the Chamber of Commerce engaging in advocacy with state and local officials is very important or important
- 87% feel that the Chamber of Commerce helping to make doing business easier in the community is very important or important
- 85% rate the Chamber of Commerce providing networking opportunities as very important or important
- 85% believe that the Chamber of Commerce hosting major events to bring community and business together is very important or important
- 75% say the Chamber of Commerce educating business on relevant issues is very important or important
- 68% of respondents rate the Chamber as meeting or exceeding their expectations

The Chamber of Commerce appreciates everyone who took the time to complete the survey and offer comments. The survey results will be used by the Board of Directors and staff to guide future Chamber programs and services.



JEFFERSON STREET FARMERS MARKET MAY - SEPTEMBER: THURSDAYS 4:30 - 7 PM

The Jefferson Street Farmers Market will be hitting the streets in May! This season will be filled with fun as well as live entertainment, food, and activities. The market is a great reason to celebrate the community, meet friends old and new, and enjoy the beautiful architecture.

Downtown Burlington promotes shopping locally and it does not get more local than shopping homegrown products from artisans, bakers and farmers. Typically, local businesses support and buy from other local businesses to keep the local economy moving. Therefore, by shopping for locally grown produce and locally made products, you are playing your role in helping Burlington's economy thrive.

BLADE SIGN GRANT

Did you Know?

Downtown Partners, Inc. Business Signage Grant Program offers applicants up to \$300 in matching grant funds for perpendicular "blade" signage for Downtown businesses. Blade signs have several benefits; they accentuate the traditional historic and walkable character of Downtown Burlington, they emphasize the Downtown District, and they add liveliness to the streetscape while freeing up sidewalk space from sandwich boards. Further, blade signs encourage businesses to explore their individuality and examine their branding. But the most important part is that blade signs increase the visibility of the business.

To apply for a Business Signage Grant or for more information, please contact Amy Moyner at 319-752-6365 or visit the Blade Sign webpage at greaterburlington.com

DOWNTOWN TIGER PROJECT - UPDATE

The TIGER has made its way back to Downtown Burlington. After a mild winter, construction resumed on both Main and the 700 block of Jefferson Street. There is ample parking throughout Downtown and the businesses are open!

Come and see the progress while strolling, shopping, and dining where It's Happening in Downtown Burlington.

Follow the most recent TIGER Project updates at: BurlingtonIowa.org



GREATER BURLINGTON PARTNERSHIP SPONSORSHIP OPPORTUNITIES

Sponsorships are a great way to get your business in front of other area businesses while supporting the divisions of the Greater Burlington Partnership and community events. There are only a few 2023 sponsorships remaining, so don't delay in taking advantage of these opportunities:

Small Business Breakfast, May 9

Show your support for Greater Burlington small businesses with the Premier Sponsorship (\$1,000) or by purchasing a table centerpiece sponsorship highlighting your company (\$150).

A Very Vintage Market, July 15

This event brings as many as 10,000 visitors to Jefferson Street! Be a part of all the fun with the Entertainment Sponsorship (\$600).

Golf Classic, August 17

This is the second largest Chamber fundraising event of the year! Share your support and advertise to the 36 teams and those who support the event throughout the course. Premier (\$2,000), Golf Towel (\$1,500), or Eagle (\$1,000) Sponsorships. These sponsorships are available for the first time in several years, so now is the time to take advantage of these openings and provide great exposure for your business!

Jefferson Street Farmers Market the month of September

A great way to support Downtown Burlington, local farmers, and local food vendors! This sponsorship is LOADED with weekly benefits! Be a part of this community event! (\$2,000).

Manufacturer's Appreciation Luncheon October 6

Network with and support local manufacturers! The Booth Bingo Sponsorship (\$500) is all that's left!

Downtown Trick or Treat, October 27

It's Happening! Thousands of families flock Downtown for this event! What a great way to help the community and show your support for an all-ages event! Premier Sponsorship (\$750).

For details about each of these remaining sponsorships, please contact Marty Mogk. Sponsorships are sold on a first contact basis AND include first right of refusal for next year, allowing your business to make a tradition of support of any of these events.



**EAT, DRINK +
SHOP LOCAL**



GET TO KNOW THE TEAM



CHRIS GRAM

CHRIS GRAM, EXECUTIVE DIRECTOR CONVENTION & VISITORS BUREAU

What do you do? I partner with tourism stakeholders to help market Greater Burlington and drive more visitors to our area. An important part of the role is identifying every avenue that could entice new travelers, be it leisure weekenders or sporting event participants.

What do you enjoy about working at the Partnership? Working at the Partnership affords me the ability to interact with nearly every segment of our community, whether it's City and County officials, business owners, or residents who are interested in spreading the word about everything Greater Burlington has to offer. Residents and business owners get to see the efforts of the Greater Burlington Partnership staff at meetings and events, but what they don't see is that behind closed doors nothing changes: the Partnership is full of doers who are genuinely committed to making a positive impact on the community and help drive the needle on economic and population growth.

What do you love about Greater Burlington? Greater Burlington offers an incredibly diverse cornucopia of things to do, see, and experience! There are always unique cultural events to attend and parks to explore... and enough unique restaurants and eateries to fill up a month without visiting the same place twice.

JEREMY HESS, EXECUTIVE DIRECTOR OF ECONOMIC DEVELOPMENT

What do you do? My job is to devote myself to the things that will ensure we thrive and grow as a community. My priorities aren't numbered in order, because each one matters just as much as the next. Quality of life, job creation, growing the tax base, and talent attraction are all equally important in making sure we all have a bright future in Southeast Iowa. If investments, jobs, attractions and people are going to go somewhere, it's my job to do everything I can to make sure they come here!

What do you enjoy about working at the Partnership? Relationships are what make everything happen, and building those relationships is my favorite part of working here. Many of the people who make things happen in our community are the people who make up our volunteers and board members, and they are exciting people to work with. Whenever I can help someone overcome a hurdle to make things happen, that's rewarding!

What do you love about Greater Burlington? I love seeing us build momentum. I also love it when together we prove the "nay-sayers" wrong. I do wish there were more Nebraska Cornhusker fans around.

Share a hobby/interest or fun fact about yourself: I love supporting my wife in her running/ marathon events. I do so by ringing a cowbell, cheering, and drinking beer. I also enjoy woodworking, and a good Tannerite explosion.



JEREMY HESS

DUSTIN ROTH, DIRECTOR OF MARKETING & COMMUNICATIONS

What do you do? I get the privilege to work with every division of the Partnership as an internal ad agency. I am charged with conceptualizing, strategizing, and launching effective campaigns along with creating content that drives traffic and attention to the Chamber of Commerce, Convention & Visitors Bureau, Downtown Partners, Inc., and Economic Development initiatives and events. In addition, I spearhead the effort to shift the shopping habits of regional residents away from neighboring cities to the Greater Burlington Area.

What do you enjoy about working at the Partnership? Through my years working at the Partnership, by far, my favorite thing is seeing the effect we can have on people, businesses, and the community. From the joy on an award winner's face realizing they are being recognized for their achievements at the Annual Dinner, to helping connect a business with the information or contact that helps them grow and thrive, to being a part of an organization that helps bring multimillion dollars in investment and permanent, good paying jobs to our community. It's all of these examples and many more that make the hard work worthwhile and put a smile on my face.

What do you love about Greater Burlington? I love living in a community that has a country, quiet feel when you want it while still having plenty of things to do with friends and family with numerous delicious places to eat at the same time.

Share a hobby/interest or fun fact about yourself: Outside of work I'm always building something, from furniture to board games to renovating my house (a wide spread of topics I know). I'm hoping to build a retro arcade cabinet this year (the following, or whenever I get a few minutes of free time). I also coach travel baseball and love the Cubs much to my father's dismay.



DUSTIN ROTH



KEYNOTE SPEAKER

Kimberly Baeth

President | Golden Openings, Inc.

About Kimberly Baeth

Kimberly Baeth is the Founder and President of Golden Openings, Inc., a company in Urbandale, Iowa that produces giant scissors, ribbons, red carpets, and more. Kimberly is a nationally recognized entrepreneur, and is currently the exclusive vendor providing ceremonial accessories to the White House.

Kimberly grew up in Marshalltown, Iowa. She attended Iowa State University, where she double majored in Journalism/PR and Communications.

Baeth is a veteran speaker, and has presented at several events, including the "National Association of Woman Business Owners - Women Mean Business Summit", National - Special Event Show, GenYP Up & Coming Young Leaders Convention, DMACC's Entrepreneur Fest, and The Better Business Bureau's Safe Business Tips TB News Feature with Bobby Hansen.

She has written 4 guide books, has been featured on ABC, CBS, NBC, FOX TV, has articles in the NY Times, Washington Post, and hundreds of other publications.

YOU'RE INVITED TO THE

2023 Small Business Breakfast

MAY 9, 2023 | 7 - 9 AM
CATFISH BEND CONVENTION & EVENT CENTER

**SPONSORSHIPS AVAILABLE,
CONTACT MARTY MOGK FOR DETAILS**

- ✔ Small Business Person of the Year - SBA Iowa, 2022
- ✔ Iowa Torch Award Winner for Excellence in Business Ethics - Better Business Bureau, 2020
- ✔ Community Excellence Award - U.S. Chamber of Commerce, 2017
- ✔ National Enterprising Woman of the Year - Enterprising Women's Magazine, 2018
- ✔ Small Business Woman of the Year - National Association Woman Business Owners - Iowa Chapter, 2018
- ✔ The Inspiring Business for Women Designation Award - Girl Scouts of Greater Iowa, 2022, 2021

+ more!



2023 COMMUNITY EVENT FUNDING GRANT WINNERS



The Convention & Visitors Bureau is dedicated to marketing and promoting the Greater Burlington community as a premier destination to both leisure and business travelers. More than a mission statement, these words drive every effort undertaken by the division. Thankfully, the CVB is not alone in this endeavor... far from it!

"In 2022, the events supported by this grant helped generate an estimated \$1.3 million to Southeast Iowa's economy."

Countless local individuals and organizations recognize the important role tourism plays in the economic growth of Greater Burlington. By generating diverse, family-friendly events that attract thousands of visitors to the area, these Greater Burlingtonians – friends and neighbors – are a considerable force for driving local tourism.

The CVB's Community Event Funding grant, awarded annually, is one way in which the division supports and promotes the events drawing visitors to local hotels, restaurants, and stores.

THE CONVENTION & VISITORS BUREAU IS PROUD TO RECOGNIZE THE WINNERS OF THE 2023 COMMUNITY EVENT FUNDING GRANTS:

Burlington Riverfront Entertainment – Midwest Convention of Bands
 Cornerstone Wedding & Event Center – Tri-State Battle of the Bands
 Snowbull, Inc. – Burlington Snowbull
 Spirit Volleyball Club – Spirit VBC
 Brent Slocum Foundation – Slocum 50

Bike Burlington – Snake Alley Criterium
 Art Center of Burlington – Snake Alley Art Fair
 Downtown Partners, Inc. – A Very Vintage Market
 Snake Alley Festival of Film – Snake Alley Festival of Film
 The Capitol Performing Arts Center – Old Couch Music Festival

For more information about the Community Event Funding grant and driving tourism in Greater Burlington, contact Chris Gram at cgram@greaterburlington.com.





JOIN US AFTER WORK

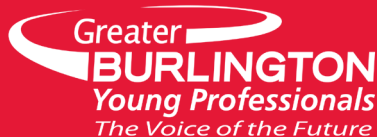
BUSINESS AFTER HOURS

Midwest Realty Group, Inc.

914 Broadway St, Ste 3, West Burlington

April 13, 5 - 7 PM

Join us with your co-workers to build your network at Business After Hours and grow your business!



GREATER BURLINGTON YOUNG PROFESSIONALS REIMAGINED AND BETTER-THAN-EVER

The Greater Burlington Young Professionals program is primarily a networking group for adults ages 21 - 40. Its mission is to provide opportunities for its members to foster relationships with peers, and to promote personal and professional development by offering networking opportunities, educational seminars, and volunteer programs. The Young Professionals (YP) program focuses on ensuring that its members have the resources they need to succeed in their careers or their personal development.

The Young Professionals volunteer-led Leadership Council, which guides the program, has introduced several new opportunities and benefits. These include quarterly and annual recognition awards, providing affordable professional headshot photos, and showcasing Greater Burlington Young Professionals members and their measures of success on the Greater Burlington YP social media pages.

**With a recent leap in membership, the program is growing faster than ever.
There is great enthusiasm for the events that are planned for this year.**

The 2023 YP Event Calendar features seventeen events, each offering a different topic or activity. Tradition continues with the semi-monthly educational Lunch & Learn seminar series and the quarterly Networking at Night YP socials. New in 2023 is the opportunity for YP members to enjoy hands-on and behind the scenes experiences with Chamber of Commerce member businesses. These Burlington Behind the Scenes exclusive classes will cover a variety of interests including coffee roasting, soap making, hiking, and even mixology. Also new this year, the YP group will be embarking on two afternoon trips through an offering called Beyond Burlington Tours. These day trips will help participants connect with other Young Professional groups across Southeast Iowa and will represent the businesses of Greater Burlington Young Professionals that are located outside of the Burlington/West Burlington area. As a perk of membership, Young Professionals will be able to reserve seats in a limousine to cruise in style as they explore surrounding communities and events.

The Greater Burlington Young Professionals program is experiencing tremendous growth. There has never been a better time to get involved or enroll employees in this program!

For more information, Please visit GreaterBurlington.com or email youngprofessionals@greaterburlington.com

WELCOME

NEW MEMBERS

Please welcome these new Chamber of Commerce members by sending an email, liking their Facebook page or visiting their website. Even better, stop by to introduce yourself, exchange business cards and help grow their network as well as your own!

Just Organize, LLC

JustOrganize.Today, Burlington, 319-759-4162

Melissa Jones, Owner, melissa@justorganize.today

With a heart of service to others, a passion for organizing and many factors of family and personal change, I have been led to Just Organize, LLC. My business is built on relationships and trust. We will work together to tackle your individual priorities and needs seeking an outcome that will serve you best long-term. I look forward to working with you in the near future. Let's do some organizing!

Our Yesterday Farm

OurYesterdayFarm.com, Oakville, 319-573-8198

Jennifer Larson, Director of Sales & Marketing, info@ouryesterdayfarm.com

The Jack Larson family of rural Mediapolis knows the goodness of farm-raised beef and pork. How? We've enjoyed it all of our lives! As a five-generation farm, we care deeply about our rural roots and raising our livestock ethically. We are focused on healthy living, and do not use GMOs, hormones or preventative antibiotics. We raise Angus cattle and purebred Hampshire hogs that we choose to feed our family and proudly share with our customers.

Western Smokehouse Partners, LLC

http://www.wspartners.com, 3800 West Ave, Burlington

Crystal Bohm, Chief Human Resources Office, careers@wspartners.com

Western Smoke House Partners, LLC strives to delight consumers as the preferred manufacturer of premium, crafted meat snacks. Our business is a service and so we think like a hospitality company. We provide value through world class service, manufacturing expertise and supply chain operations. We create an environment for associates to thrive through training, tools, and a safe workplace.

BNSF Railway

Burlington, Peter Skosey, Exec Dir Public & Gov't Affairs

For 170 years, BNSF Railway has been an essential connector – safely and efficiently transporting freight from point A to point B. But we don't just move freight; we touch people and communities along the way. We're proud to tell our story and how we strive to be a trusted partner worthy of your respect.

CELEBRATING BUSINESS SUCCESSES



BEURICO BEAUTY SUPPLY

Celebrating their grand opening



T-MOBILE

Celebrating their grand opening



LUMI BEAUTY CLINIC

Celebrating their grand opening

**FIRE AND WATER
CLEAN UP & RESTORATION**
24 HOUR EMERGENCY SERVICE



COMMERCIAL OR RESIDENTIAL
COMPLETE MOVE-OUTS
MOLD MITIGATION & REMEDIATION
TRAINED, UNIFORMED PROFESSIONALS



319-754-8050 OR 877-754-8050
WWW.SERVPROBURLINGTON.COM

**MIDWEST
REALTY**
BUY. SELL. BUILD.



MidwestRealtyGroupInc.com
914 Broadway Street, STE 3 | 319-237-1139

IOWA STATE UNIVERSITY
Extension and Outreach

BUILDING A #STRONGIOWA

Des Moines County Extension

1700 W Mt Pleasant St, West Burlington, IA 52655
(319) 671-7165

www.extension.iastate.edu/desmoines





Member

BUSINESS BRIEFCASE

Do you have something special to announce? A work anniversary, a retirement, a special award or recognition, a conference attended, a sales record, a name change, a new location? We would love to share this with our membership. Please contact Brenda Levitt.

SOUTHERN AIRWAYS EXPRESS TAKES FLIGHT

Travelers will enjoy the same great amenities as always when they fly out of Southeast Iowa Regional Airport but with new perks that come with Southern Airways Express. This EAS provider operates one of the largest commuter airlines in the country. Whether you're connecting to a Southern flight from one of their interline partners (American, United, or Alaska Airlines) or simply hopping between two of the Southern-served airports, they look forward to welcoming you aboard. Book your next trip on IFlySouthern.com. Your hometown airline to the world - every passenger, every day, every flight!

EXTRAORDINARY NURSES RECOGNIZED AT GREAT RIVER HEALTH

Great River Health awarded their first two DAISY Awards for Extraordinary Nurses®. The award is part of the DAISY Foundation's mission to recognize the extraordinary, compassionate nursing care they provide patients and families every day.

The Great River Health DAISY Award recipients are:

- Alison Rechkemmer, a nurse in the Emergency Department at Southeast Iowa Regional Medical Center, West Burlington Campus.
- Elizabeth Hoffmeister who works on the Acute Care Unit at Southeast Iowa Regional Medical Center, West Burlington Campus.

BLACKHAWK RECREATION CENTER ANNEX SPECIALTY ROOMS PROJECT

The Southeastern Community College Foundation begins a fundraising campaign for the new Blackhawk Recreation Center Annex. This project will repurpose existing SCC spaces, focusing on student well-being and engagement.

While the new \$5.5 million Blackhawk Recreation Center is fully funded, the SCC Foundation is seeking donations to support the Annex project. The projected cost for the Annex area is \$1.4 million and will include a Student Activity Room, Strength Training Room, Multipurpose Exercise Room and Student Engagement area.

The versatile Student Activity Room will be a much-needed space dedicated to student club meetings, activities and smaller events. The Strength Training Room will be equipped with a mix of free weights and exercise equipment. The Multipurpose Room will be available for yoga, Pilates, aerobics, dance and organized group exercise classes. The Student Engagement Area features an updated space for students to gather, study and collaborate.

For more information or to take a tour please contact Val Giannettino at 319-208-5065.



Zaiser's
LANDSCAPING
FLORIST & GREENHOUSE
2400 SUNNYSIDE AVE • BURLINGTON, IA • 319-752-6871
ZaisersGardenCenter.com

WORLD
TWO RIVERS
INSURANCE
IS NOW
WORLD
INSURANCE

Large Resources.
Local Relationships.

www.worldinsurance.com

Hello spring!

Access Energy
Cooperative

photo by Mary Raymer
www.accessenergycoop.com

Hot Deals
Greater Burlington.com/HotDeals

FREE TO USE

Find deals from **local businesses**.

Save money.

SCAN ME

April EVENTS

1 – Caturday Night Fever
Cornerstone Wedding & Event Center, 4 PM
Facebook.com/100066794694233

1 – Quiz for a Cause
Memorial Auditorium, 6 - 8 PM
GreaterBurlington.com/quiz

2 – Downtown Spring Open House
Downtown Burlington, 10 AM - 4 PM
Facebook.com/DowntownBurlingtonIowa

4 – Trivia Nights
The Boogaloo Sports Bar & Grill, 8 PM
FunCityResort.com

5 – ARTIST to ARTIST
Art Center of Burlington, 6 - 8 PM
BTownArt.com

6 – Comedy Thursday: April Macie
Memorial Auditorium, 7:30 PM
BurlingtonRiverfront.org

7 & 8 – IRA 410 Clash
34 Raceway, 5 PM
34Raceway.com

8 – Spring Scavenger Hunt
Starr's Cave Nature Center, 10 AM
DMCConservation.com

8 – Rock Night
Memorial Auditorium, 7 PM
BurlingtonRiverfront.org

10 - 12 – JazzReach
Capitol Theater, TBD
BurlingtonCapitolTheater.com

11 – Karaoke Nights
The Boogaloo Sports Bar & Grill, 8 PM
FunCityResort.com

12 – Cocktail Hour: The Show
Memorial Auditorium, 6:30 PM
BurlCivicMusic.com

13 – Business After Hours
Midwest Realty Group, 5 PM
GreaterBurlington.com

13 – World Travelogue Series
Capitol Theater, 1:30 PM and 7:30 PM
BurlingtonCapitolTheater.com

14 – Back the Blue Trivia Night
Barn on the Ridge, 6 PM
Facebook.com/Events/534954778728411

14 – Bubby Galloway
Capitol Theater, 8 PM
BurlingtonCapitolTheater.com

15 – Sounds of the Past
Des Moines County Heritage Center, 10 AM
DMCHS.org

15 – Southeast Iowa Metaphysical Fair
Port of Burlington, 10 AM - 2 PM
Facebook.com/TheBroomCloset2014

15 – Slocum 50
34 Raceway, 4 PM
34Raceway.com

15 – Farm-to-Table Dinner
Harvestville Farm, Donnellson, 6 PM
HarvestvilleFarm.com

15 – Dry Bar Comedy
Legacy Theater, Carthage, IL 7 PM
TheLegacyTheater.com

17 – Stan Kenton Legacy Orchestra
Capitol Theater, 7 PM
BurlingtonCapitolTheater.com

View more events at
GreaterBurlington.com/Events

21 – Friday Forums
Greater Burlington Partnership
8 - 9 AM, Zoom Optional

GreaterBurlington.com
22 – Earth Day Cleanup
Port of Burlington, 8 AM
Facebook.com/KeepBurlingtonBeautiful

22 – Miss Lily's Story Time for Toddlers
Des Moines County Heritage Center, 10 PM
DMCHS.org

22 – BrewFest
Memorial Auditorium, 1 - 4 PM
BurlingtonRiverfront.org

22 – Farm-to-Table Dinner: Wine Pairing
Harvestville Farm, Donnellson, 6 PM
HarvestvilleFarm.com

23 – Wedding Swap Shop
Cornerstone Wedding & Event Center, 12 PM
TheCornerstoneIA.com

26 – Coffee with the Chamber
Greater Burlington Partnership, 8 AM
GreaterBurlington.com

28 – Comedian Heather Land
Capitol Theater, 8 PM
BurlingtonCapitolTheater.com

29 – Season Kick-Start
34 Raceway, 5 PM
34Raceway.com

29 – Let's Get It On: Jackie's Boy
Legacy Theater, Carthage, IL, 7 PM
TheLegacyTheater.com

29 – Twitty & Lynn
Capitol Theater, 7:30 PM
BurlingtonCapitolTheater.com

STANDARD OF BEVERDALE

WHAT ARE YOU DREAMING OF? LET US HELP YOU BUILD IT.



- ROOFING
- FENCING
- MATERIALS
- PLUMBING
- WINDOWS
- HARDWARE
- DOORS
- ELECTRICAL
- SIDING
- APPLIANCES

WE SUPPLY THE BEST PRODUCTS TO HELP YOU BUILD THE HOME OF YOUR DREAMS

WE CARRY YOUR FAVORITE BRANDS

Now including the largest selection of Carhartt in Southeast Iowa



FOLLOW US ON 319-754-5174

STANDARD OF BEVERDALE
11194 TWIN PONDS DRIVE
WEST BURLINGTON, IA 52655

SILGAN
CONTAINERS
BEST IN CLASS



2019 MANUFACTURER OF THE YEAR

3725 Division St, Burlington, IA 52601
319-208-0610 | SilganContainers.com



Area Recyclers

HazChem Center | Area Recyclers

DMC Landfill | Recycled 2 You Store | Electronic Waste

Catch the recycling spirit - go curbside with your recycling!
319-753-8126 • DMCWaste.org

Like and Follow AREA RECYCLERS on Facebook

DMCRSWC | 1818 W Burlington Ave, Burlington, IA 52601

RE/MAX
REAL ESTATE SPECIALISTS, INC.

LOCALLY OWNED
NATIONALLY KNOWN



107 Broadway, West Burlington, IA 52655
BurlingtonIowaHomes.com • 319-752-8888
Each office is independently owned and operated



EARTH DAY CLEAN-UP – APRIL 22

Earth Day is a great way to come together, clean and show pride in the community. Participants of all ages are invited to come out for the annual Earth Day Clean-up on April 22. Individuals, families, businesses, church groups, and organizations are all encouraged to lend a hand. Please follow the Keep Burlington Beautiful Facebook page for more details.

For more information, call Amy Moyner at 319-752-6365

SOUTHEASTERN COMMUNITY COLLEGE SCHOLARSHIP DONOR APPRECIATION RECEPTION

Join us for a special day to learn how your support of SCC is making a difference in the lives of our students.

April 20 at the SCC West Burlington campus.

- 2 PM Welcome – Dr. Michael Ash
- 2:30 PM – Short program & light refreshments
- 3 PM Walking tour of the new facilities and projects on campus

Please RSVP to Reta Krieger 319-208-5066 or rkrieger@scciowa.edu.

COCKTAIL HOUR: THE SHOW

April 12 | 6:30 - 7 PM

From coast to coast, Ballets with a Twist is turning heads and setting trends with its sparkling style. The company's signature production, Cocktail Hour: The Show, reinvents the excitement of classic entertainment through an original mix of choreography, music, and costume design. Combining the timeless American spirit with a twenty-first-century flair, this electrifying floorshow-to-stage experience brings the Mai Tai, Martini, Manhattan, and more to life in a series of sparkling vignettes. You've never seen cocktails like these!

Single tickets are \$35 and student tickets are \$10. Tickets can be purchased by calling Burlington Civic Music at 319-752-0336 or Burlington Memorial Auditorium at 319-753-8111.

For more information, visit: BurlCivcMusic.com

BURLINGTON REGIONAL RECPEX

Early Bird Girls USSSA Fast Pitch Softball Tournament - April 1

Spring Fling 4 Rings Girls USSSA Fast Pitch Softball Tournament - April 2

YMCA/SESA Spring Youth Soccer - April 8

Crazy Socks Girls USSSA Fast Pitch Softball Tournament - April 15

YMCA/SESA Spring Youth Soccer - April 15

Spring Swing 4 Rings Girls USSSA Fast Pitch Softball Tournament - April 16

YMCA/SESA Spring Youth Soccer - April 22

Xplosion Boys USSSA Baseball Tournament, 8U - 14U divisions - April 22 - 23

Brawl 4 the Belts Girls USSSA Fast Pitch Softball Tournament - April 29

YMCA/SESA Spring Youth Soccer - April 29

Battle 4 the Belt Girls USSSA Fast Pitch Softball Tournament - April 30



- ◆ Tax Planning & Preparation
- ◆ Accounting & Bookkeeping
- ◆ Full-Service Payroll
- ◆ Controllership Services
- ◆ Audit & Review
- ◆ Business Consulting

320 N. Third, Ste 300, Burlington, IA 52601
319-753-2000 • Menkeco.com

A "collection" of bakers and producers

THE COLLECTIVE

BURLINGTON FOOD HUB

A farmer's market on steroids
805 Jefferson Street
Burlington, IA 52601

Your local source for fresh produce, delicious baked goods, meat, farm fresh eggs, and so much more

Phone (319) 759-3527

Follow us on Facebook at: The Collective Food Hub

SG General Contractor

CONSTRUCTION

- Design
- Engineering
- Construction

2204 West Mt. Pleasant Street
West Burlington, IA 52655
319-752-7154
ron@sgconstructco.com
www.sgconstructco.com



RiverPark Place
 610 N 4th St, Ste 200
 Burlington, Iowa 52601
 PH 319-752-6365
 FAX 319-752-6454
 info@greaterburlington.com
 GreaterBurlington.com

DOWNTOWN SPRING OPEN HOUSE

April 2, 10 AM - 4 PM

It's Happening in Downtown Burlington this Spring! The Spring Open House on April 2 will give shoppers the opportunity to view new trends and try new foods with eateries and drinkeries showing off their new food and drink menus.

Attendees will also be able to register for up to \$750 in Downtown Dollars! Everyone looks forward to Spring weather and exploring the Downtown District during this fun shopping event.

\$750 in Downtown Dollars Give Away!



**Your Trusted
 Financial Partner**

Let us help you reach your financial goals.

tworivers.bank | 888-226-6063



Making Connections, Building Community

Follow Us On



Need Card Processing?

Call Brenda 319-768-6138

