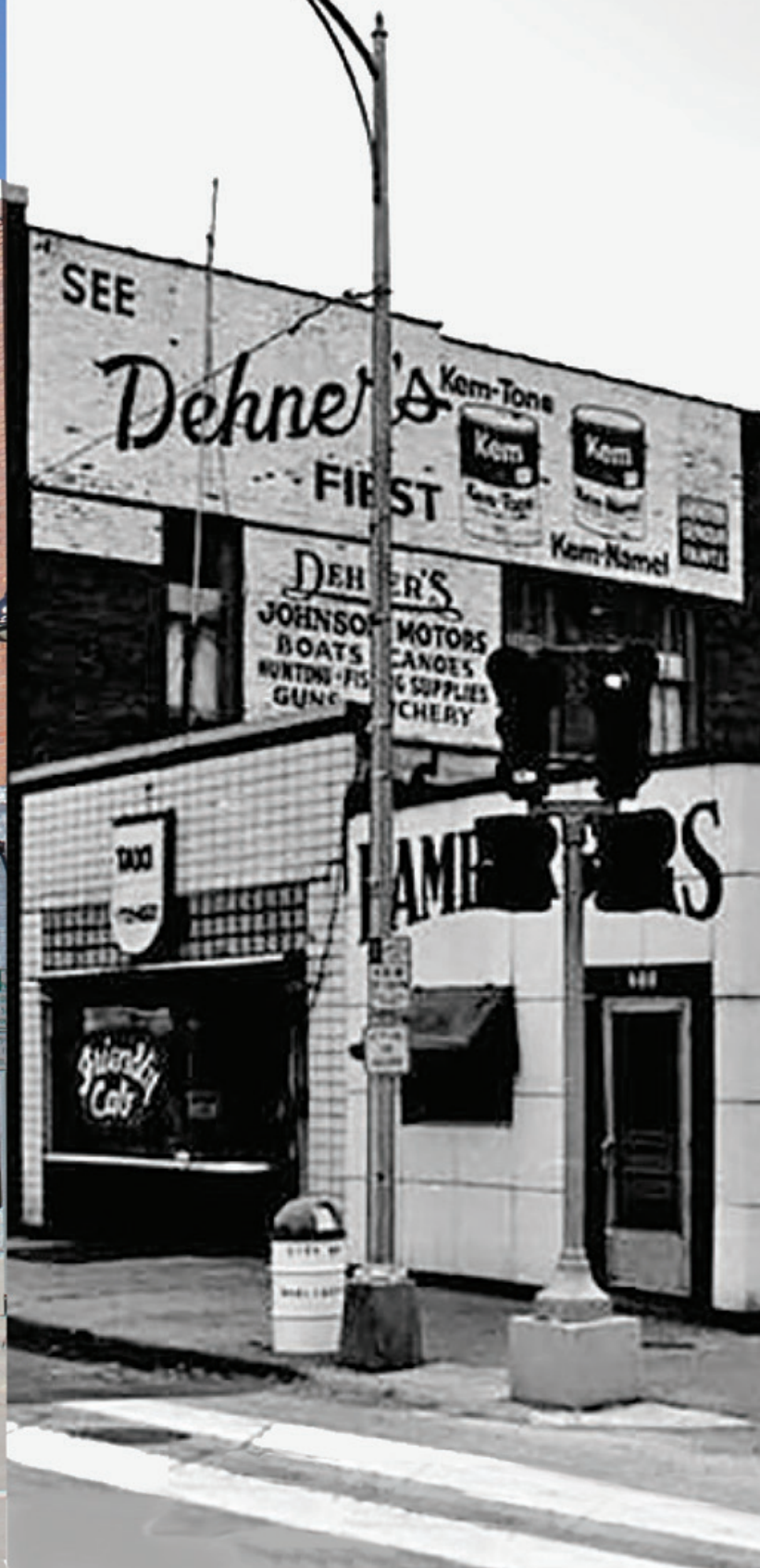


THE PARTNERSHIP

GREATER BURLINGTON PARTNERSHIP NEWSLETTER - VOL. 106 NO. 04



It's Happening.

40 YEARS

1986 - 2026

DOWN TOWN **BURLINGTON** IOWA

Downtown Partners, Inc.

President & CEO's Letter



Dear Members and Friends of the Greater Burlington Partnership,

Burlington has been a Main Street community for 40 years, and we think that's worth celebrating! In 1986, a group of community leaders made a decision that would quietly shape everything that followed. They formed Downtown Partners, Inc. because they believed Burlington's Downtown deserved focused energy, real investment, and a shared vision. We are so grateful for the vision of those catalytic leaders!

Through the nationally recognized Main Street America program, Burlington embraced an approach built around four ideas: historic

preservation, economic vitality, design excellence, and promotion. That framework became the backbone of decades of volunteer effort, private investment, storefront improvements, business growth, and community events that have filled our riverfront and downtown streets with life and pride.

Our downtown has weathered fires and floods, lived through a global pandemic and navigated economic shifts that challenged communities like ours all across the country. Through all of it, downtown Burlington endured, and today it is genuinely thriving.

In 2017, the City of Burlington secured a transformative \$17 million federal TIGER grant to reimagine our riverfront and reinvest in our downtown streets and sidewalks. That public investment sparked private development and signaled renewed confidence in the heart of our community. Today, the momentum is undeniable and what began as an infrastructure project has become a powerful example of how strategic public investment, initiated by our city leadership, has unlocked sustained private growth and reshaped the trajectory of our downtown. Having DPI leadership available and trained in assisting small businesses through this significant change was invaluable.

What makes 40 years meaningful is not any single project or event, it is the sustained commitment behind all of them. Generations of board members, business owners, city leaders, and volunteers chose to invest their time in the core of this community because they understood something important: when downtown does well, the whole region does well.

Anniversaries are a good time to look back, but the work ahead matters just as much as the legacy behind us. The next 40 years will call for the same courage and collaboration that brought Downtown Partners in the first place, along with a willingness to innovate while staying true to our heritage. Our community has so much to be proud of!

Cheers to 40 years!

President & CEO
Greater Burlington Partnership

Partnership Staff



Amy O'Brien
President & CEO
319-208-0043
aobrien@greaterburlington.com



Melissa Jones
Chamber of Commerce
Exec. Dir. 319-208-0052
mjones@greaterburlington.com



Amy Moyner
Downtown Partners, Inc.
Exec. Dir. 319-208-0056
amoyner@greaterburlington.com



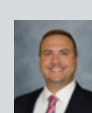
Chris Gram
Convention & Visitors Bureau
Exec. Dir. 319-208-0045
cgram@greaterburlington.com



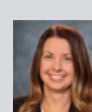
Taylor Collins
Economic Development
Exec. Dir. 319-208-0050
tcollins@greaterburlington.com



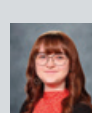
Crystal Jolin
Director of Finance
319-208-0044
cjolin@greaterburlington.com



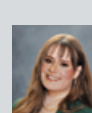
Dustin Roth
Marketing & Communications
Dir. 319-208-0048
droth@greaterburlington.com



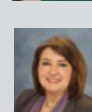
Telisha Van Rycke
Regional Director of
Workforce Innovation
319-208-0046
tvanrycke@greaterburlington.com



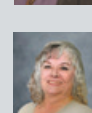
Kaylea Felland
Convention & Visitors Bureau
Prog. Coord. 319-752-8731
kfelland@greaterburlington.com



Mac Holford
Events Manager
319-208-0040
mholford@greaterburlington.com



Brenda Levitt
Graphic Designer
319-208-0047
blevitt@greaterburlington.com



Pam Wright
Office Manager
319-208-0042
frontdesk@greaterburlington.com

SUBSCRIPTIONS: Price is \$24, which is included in annual events fees. Non-members: \$4 per issue. Periodicals postage paid at Burlington, Iowa.
POSTMASTER: The Partnership is published monthly by the Greater Burlington Partnership 610 North 4th Street, Suite 200, Burlington, Iowa 52601.

POSTMASTER: Send address changes to Greater Burlington Partnership (USPS 001-692) 610 North 4th Street, Suite 200, Burlington, Iowa 52601.

BUSINESS *after* HOURS

Community Health Centers of Southeastern Iowa, Inc.

1706 W Agency Rd, West Burlington | April 9, 5 - 7 PM

Join Chamber of Commerce member businesses to network and make new connections at Business After Hours!



ON THE COVER

Then & Now: The 600 Block of Jefferson Street

Cheers to 40 years of progress in Downtown Burlington.

The photo on the right takes us back to the 1970s, when the 600 Block of Jefferson Street looked very different. While the buildings have long been part of Burlington's historic fabric, the energy and activity on this block have transformed dramatically over the past decade.

The photo on the left shows the 600 Block today in 2026. What was once a quieter stretch of downtown has experienced a true renaissance. Today the block is home to 20 residential units, unique services, delicious sweet treats, family fun with mini golf, fantastic food and drink, and a collection of locally owned boutiques.

This revitalized block is a great example of how Downtown Burlington continues to evolve while honoring its historic roots. Residents, visitors, and entrepreneurs have helped



breathe new life into these beautiful buildings, creating a vibrant place to live, shop, dine, and gather. If it has been a while since you explored the 600 Block of Jefferson, now is the time to see the transformation for yourself.

Here's to 40 years of Downtown Burlington and to the continued revitalization of the place where it's happening.

** Look for the 40th Anniversary logo and window clings displayed throughout Downtown this year as we celebrate four decades of Main Street and Downtown Partners, Inc. From Main Street Iowa Challenge Grants to Open 4 Business awards, façade improvements, and building renovations, these successes are made possible through the partnership of the State of Iowa, the City of Burlington, preservation efforts, and the support of Downtown Partners. Help us celebrate 40 years of revitalizing Downtown Burlington.*

COFFEE WITH THE CHAMBER

APRIL 28, 8AM

**IOWA MEMORIAL GRANITE COMPANY,
2115 N ROOSEVELT AVE, BURLINGTON**

Coffee with the Chamber is a quarterly opportunity for Chamber members to connect, build relationships, and stay engaged with the Greater Burlington business community.

This month we'll gather at Iowa Memorial Granite for a relaxed morning of coffee, conversation, and connection. Attendees will have the chance to introduce themselves, share their business story with the group, and hear what's happening across the community.

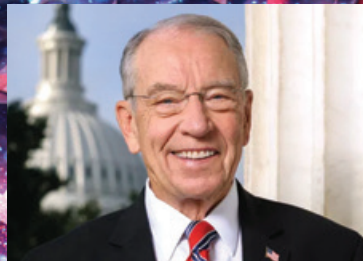
All members are welcome, whether you're new to the Chamber, a long-time member, or anywhere in between.



IOWA MEMORIAL
GRANITE COMPANY | EST. 1943



SENATOR JONI ERNST



SENATOR CHUCK GRASSLEY



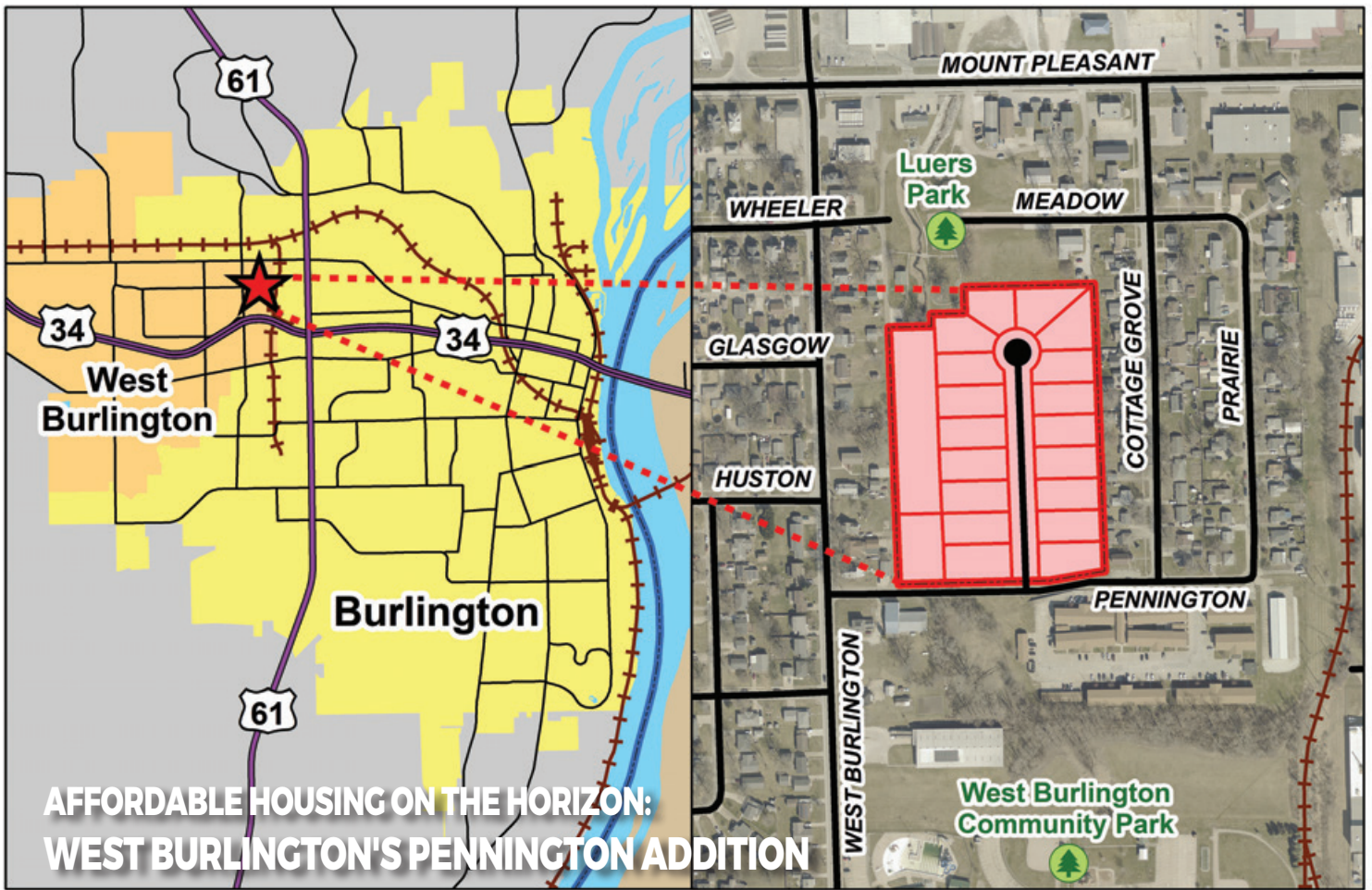
**REPRESENTATIVE
MARIANNETTE MILLER-MEEKS**

SOUTHEAST IOWA REGION - WASHINGTON D.C. FLY-IN *May 19 and 20*

Each year, representatives from Des Moines, Henry, Lee, and Louisa counties travel to Washington, D.C. to represent our local business community. This year, the Southeast Iowa delegation will once again meet with Senator Chuck Grassley, Senator Joni Ernst, and Congresswoman Mariannette Miller-Meeks to address key federal issues. The delegation will also have the opportunity to attend specialized meetings on a variety of topics.

Travel expenses are on your own. There is no cost to attend the sessions and discussions, but registration is required at GreaterBurlington.com.

If you're interested in joining the delegation or would like more details, please visit the events section of our website or reach out to Chamber of Commerce Executive Director Melissa Jones.



**AFFORDABLE HOUSING ON THE HORIZON:
WEST BURLINGTON'S PENNINGTON ADDITION**

In September last year, the Iowa Economic Development Authority awarded approximately \$37 million in workforce housing tax credits across various projects statewide. Among the recipients was the Pennington Addition in West Burlington, a planned 19-home single-family development utilizing the innovative Homes for Iowa Program. This program partners with the Iowa Department of Corrections, where inmates at the Iowa State Penitentiary in Newton prefabricate stick-built homes in a controlled facility.

The process allows for high-quality construction at reduced costs, while providing vocational training

and rehabilitation opportunities for participants. These customizable homes offer 2- to 3-bedroom layouts, designed to suit family needs. They feature modern, energy-efficient amenities such as open-concept kitchens, durable vinyl plank flooring, and smart energy systems to minimize utility bills. Priced for affordability, these homes aim to address housing shortages such as those facing Des Moines County.

The project, supported by state workforce housing tax credits and local tax increment financing, is a significant boost for the West Burlington community.

**SPANISH
TREASURES**

FROM MADRID TO BARCELONA
with Greater Burlington Partnership

**MADRID . CORDOBA . SEVILLE
GRANADA . VALENCIA . BARCELONA**

REGISTRATION DEADLINE: JUNE 2



10 DAY TOUR | OCTOBER 2, 2026

Price per person on double occupancy:

\$3759

Adventure Awaits!



Join us on this exciting trip!
Brenda Levitt





LEADERSHIP CLASS PROJECT

SALUTE OUR VETS

Trivia Night! April 10 at the Eagles Club

- *Doors open at 6 PM*
- *Trivia begins at 7 PM*
- Cash Bar
- Small bites offered with donation
- Silent Auction
- Tables of 8 - \$120, bring your own snacks!
- Contact us via Facebook or email

If you are unable to attend but would like to make a donation to "Salute Our Vets," please scan the Venmo code below or contact us by email.



Greater Burlington Leadership is a program of the Chamber of Commerce, a division of the Greater Burlington Partnership.

For more information, contact greaterburlingtonleadership@gmail.com.



Greater Burlington Partnership
[@GBPartnership](https://www.facebook.com/GBPartnership)

Cascade Bridge, Burlington, Ia



*Backyard Travelers of Greater Burlington:
Explore Local Stories*

Visit Backyard
Travelers of
Greater
Burlington



The Greater Burlington CVB's e-blog, Backyard Travelers of Greater Burlington, continues to spotlight the people, places, and stories that shape the Greater Burlington community, inviting readers to experience the region through a local lens. Each post is designed to inspire curiosity and to encourage visitors to experience Greater Burlington in unexpected ways.

Recent articles highlight just how wide-ranging the blog has become. Three Hidden-Gem Parks in Des Moines County encourages outdoor enthusiasts to explore lesser-known green spaces that offer quiet trails and scenic views. History lovers can step back in time with Bridging a City to Its Park: The Story of Burlington's Cascade Bridge, which traces how an iconic structure helped connect areas of a growing city. Bart Howard: Gift to the Great American Songbook explores the life and legacy of the Burlington native whose songwriting left a lasting mark on American music, while Five Fantastic Music Venues in Downtown Burlington celebrates the stages, listening rooms, and theaters that keep live music thriving in the heart of the city. Rounding out the recent lineup, The Railroad History that Shaped Greater Burlington examines how rail lines influenced growth, industry, and the community's role in regional history.

These stories reflect the mission of Backyard Travelers: to tell authentic, engaging stories that resonate with visitors and locals alike. Readers are encouraged to explore the blog regularly for new perspectives on Greater Burlington, and those with a passion for storytelling, history, or local experiences are always welcome to consider contributing their own voice with future articles.

Backyard Travelers of Greater Burlington is more than a blog. It's a growing collection of stories that celebrate what makes our region worth exploring.

YOU'RE INVITED



2026 Small Business Breakfast

“
Overview of Iowa's Economy and How the State Supports Small Businesses and Entrepreneurs
”



DEBI DURHAM

RSVP NOW FOR THE SMALL BUSINESS BREAKFAST

CATFISH BEND CONVENTION & EVENT CENTER | MAY 12 | 7 - 9 AM

Join us for the Small Business Breakfast on May 12 from 7 to 9 AM, a morning dedicated to celebrating and supporting the small businesses that drive our local economy.

This year's program will feature a presentation from Debi Durham, Director of the Iowa Economic Development Authority and Iowa Finance Authority, who will provide an overview of Iowa's economy and share how the state supports small businesses and entrepreneurs. Her insight offers valuable perspective on the opportunities, resources, and direction shaping business growth across the state.

During the event, we will also recognize outstanding local businesses with the Small Business of the Year

and Micro Business of the Year awards, celebrating those making a meaningful impact in Greater Burlington.

The event is free to attend, but RSVP is required by May 5. Breakfast will be provided.

Scan the QR code or visit GreaterBurlington.com/RSVP to register.



AND THE WINNER IS... OUTSTANDING NICHE MARKETING: GREATER BURLINGTON CONVENTION & VISITORS BUREAU

On March 12, the Greater Burlington Convention & Visitors Bureau was honored with the Outstanding Niche Marketing award by Travel Iowa, the tourism division of the Iowa Economic Development Authority. In the lead up to the inaugural Burlington River Days in June, 2025, the CVB was instrumental in getting the word out for what would become an iconic event on the Greater Burlington riverfront.



CONNECT YOUR INTERNS. STRENGTHEN YOUR WORKFORCE.

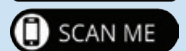
The Greater Burlington Partnership's Intern Connect Program is designed to help local businesses maximize the impact of their internships while strengthening Des Moines County's future workforce. Created with talent retention in mind, this initiative connects interns to one another, to the community, and to opportunities that encourage them to envision a future right here.

Intern Connect goes beyond the workplace. Through curated events and consistent communication, interns gain exposure to local industries, leadership insights, and community engagement opportunities. In its second year, the program welcomed 32 interns and hosted two engaging events that fostered professional development, networking, and a stronger sense of belonging.

For employers, participation is simple but the impact is meaningful. When interns feel connected to their peers and community, they are more likely to build relationships, grow professionally, and consider long-term employment locally. Investing in their experience today helps build a stronger talent pipeline for tomorrow.

Chamber members are encouraged to enroll their interns in the Intern Connect Program and stay informed through the program newsletter and event updates. More information coming soon!

To register an intern or to receive more information, email Teli Van Rycke at tvanrycke@greaterburlington.com. Together, we can connect your interns and strengthen our workforce.





Do you have something special to announce? We would love to share this with our membership. Contact Brenda Levitt.

Jerry's Main Lunch Turns 80!

Jerry's Main Lunch will celebrate eight decades this month as a cornerstone of Burlington and the holder of the second-oldest food service license in Iowa.

For owner Dawn Moeller, the milestone marks the fulfillment of a lifelong dream. She fondly recalls "serving" rocks and mud as a child, always imagining herself running a restaurant. That dream became reality after she was hired at Jerry's in 2000 as an experienced cook.

Originally recruited by the founders' granddaughter, Moeller quickly became part of the diner's legacy, which began in 1946. After 25 years, she was offered the opportunity to take over when Dick Garnjost retired in 2022.

Maintaining the diner's originality remains her top priority. While much has changed over the decades, Jerry's menu continues to feature scratch-made comfort food. The standout favorite is "The Mess," a hearty combination of hash browns, vegetables, meat, eggs, and cheese, served any time of day.

To celebrate the anniversary, Jerry's will host a special on April 11 featuring a \$5 burger box with fries and a soda. The diner has also introduced new 24-hour Friday, with late night specials available. Otherwise, hours are 4 AM - 7 PM ON Weekdays, 4 AM - 4 PM ON Saturdays and 4 AM - 2 PM ON Sundays.

SCC Student Kadence Dieckow Named Member of the 2026 Coca-Cola Academic Team

Southeastern Community College student Kadence Dieckow has been named a member of the 2026 Coca-Cola Academic Team and will receive a \$1,300 scholarship from the Coca-Cola Scholars Foundation. The recognition also helped her earn a full-ride scholarship to Iowa State University.

Dieckow was selected from a highly competitive national pool of applicants and recognized as a member of the All-Iowa Academic Team at a banquet in Des Moines on March 2, hosted by Community Colleges for Iowa. During the ceremony, Dr. Lynn Tincher-Ladner, president and CEO of Phi Theta Kappa, presented Coca-Cola Academic Team awards to seven Iowa students.

Great River Health Invests in the Future of Patient Experience with Epic's MyChart

"Great River Health is taking a major step forward in enhancing the patient experience by transitioning to Epic, the nation's leading electronic health record (EHR) system. Beginning June 6, patients will be able to take full advantage of Epic's MyChart patient portal, giving them more control, transparency, and connection to their care than ever before.

Why Epic Matters to Patients and Their Care

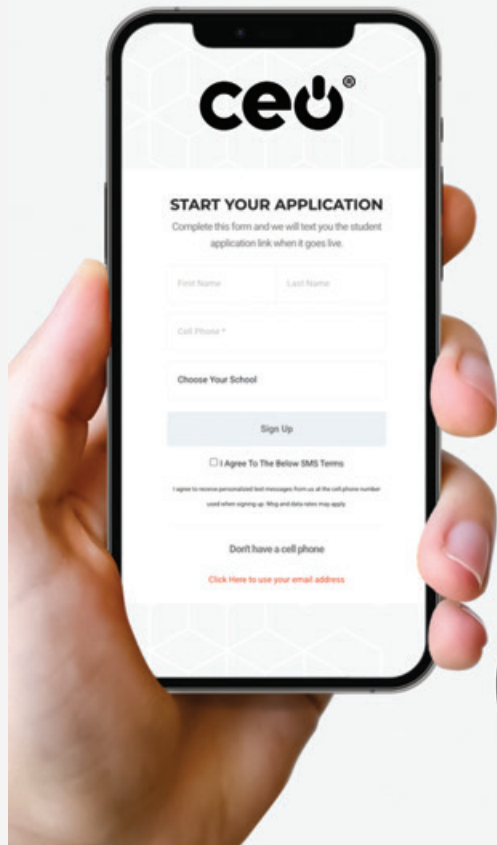
Epic is widely recognized across the healthcare industry for its integrated, patient-centered approach to health information. Epic offers a seamless experience for both providers and patients, especially through its MyChart portal, which puts health management directly into patients' hands.

This conversion to Epic is more than a technology upgrade, it's an investment in our patients' experience and in the future of healthcare here at Great River Health," said Dr. Michael McCoy, Great River Health President and CEO. "Epic is the gold standard for EHRs, and by bringing MyChart to our community, we are empowering patients to take control of their health information in ways that simply weren't possible before.

Taco John's Burlington Celebrates National Franchisee Win with New Meal Steals

Corrick Vision and partners, owners of Taco John's in Burlington, Iowa, have been named the top franchisee in the system for their outstanding performance in 2025. The honor, awarded by Taco John's International, Inc., recognizes the team's commitment to excellence, innovation, and customer satisfaction. "We're incredibly proud of our team and grateful to our loyal guests who made this achievement possible," said Bill Corrick, President of Corrick Vision. To celebrate, the Burlington location is receiving a bold new look inspired by the brand's vibrant West-Mex™ style. Updates include new exterior signage, interior improvements such as furniture, flooring, ceilings, walls, and a redesigned front counter.

The drive-thru has also been upgraded with a new AI ordering system designed to improve speed and accuracy. Guests can also enjoy a limited-time \$5 Meal Deal with a Crispy Taco, Burrito, Potato Olés®, and a drink.



YOUR *future*
LOOKS BETTER WITH
— ceo[®] —

APPLY TODAY

CEO is a year-long, hands-on entrepreneurial experience where you'll build your network, launch real businesses, and gain confidence for your future.

START YOUR ONLINE APPLICATION

- Open your phones camera
- Scan QR code
- Enter your name and phone number
- Select your school



APPLICATIONS MUST BE SUBMITTED BY
APRIL 30TH

CEO requires a minimum of 2 references.

After submitting your application online you will be sent a text message with a link that you can copy and send to adults that you would like to provide a school or business reference for you.

www.DesMoinesCountyCEO.com

The Des Moines County CEO Board would like to thank the community for their generosity and support!

A special thank you to our Founding Investors:



Jerry and Lin Parks




MARISSA GALLOWAY
2025 Morgan-Scott CEO

*"You are setting yourself up for a brighter future. You get the opportunity to gain new skills, networking opportunities, as well as exposure to a different side of your community. And **it is unlike any class you will ever take in high school.**"*



Held annually in the heart of Downtown Burlington, A Very Vintage Market brings together distinctive vendors, enthusiastic shoppers, and a vibrant downtown atmosphere that showcases the district's charm and creativity. Vendors offering antiques, handmade items, DIY creations, and retro-inspired products are encouraged to apply.

Applications are now open, and early submission is encouraged to secure participation.



The Jefferson Street Farmers Market begins May 7 and takes place in Downtown Burlington every Thursday, 4:30 - 7 pm through September 24.



Jefferson Street Farmers Market

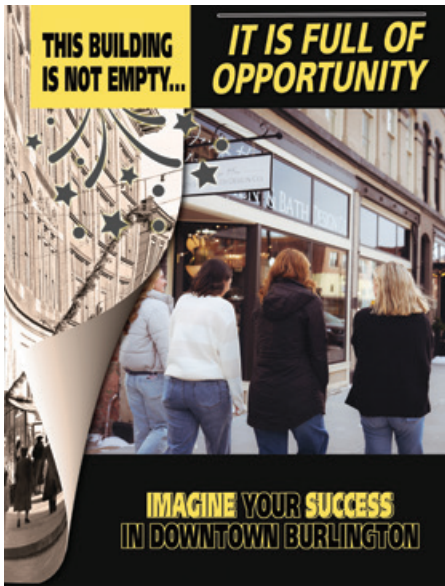
Thank you to this year's Sponsors!

IOWA STATE UNIVERSITY
Extension and Outreach



FERTILIZER





EXPLORE OPPORTUNITIES AT THE DOWNTOWN BURLINGTON COMMERCIAL SPACE OPEN HOUSE

April 25 | 10 AM - 1 PM

Downtown Burlington is opening its doors to future business owners, entrepreneurs, and expanding companies during the Commercial Space Open House on April 25 from 10 AM to 1 PM.

Hosted by the Downtown Partners, Inc. Economic Vitality Committee, this free event offers a unique opportunity to explore available commercial spaces throughout Downtown Burlington. Whether someone is looking to relocate, expand an existing business, or open a new venture, the Open House provides a firsthand look at the possibilities available in the heart of the district.

Participants will have the chance to tour open commercial spaces, connect directly with property owners, learn about business incentives, and support activities designed to help businesses get started or grow. Attendees will also receive a directory map of

available locations and gain insight into recent and upcoming Downtown projects that are helping drive momentum and growth.

With a vibrant business community and continued investment throughout the district, the Commercial Space Open House is an ideal opportunity for anyone considering a move to Downtown Burlington.

Those interested are encouraged to mark their calendars for April 25 and take advantage of this chance to explore Downtown Burlington's potential.

For more details, follow Downtown Burlington Iowa on social media or visit GreaterBurlington.com.



WASHINGTON STREET PROJECT BRINGING CONTINUED IMPROVEMENTS TO DOWNTOWN

Work is underway on Washington Street, and if you have been through downtown lately you have probably noticed. Resurfacing crews have already started at the intersections of 3rd Street and 5th Street, with the full project running from the Central Avenue/Washington overpass all the way down to Front Street.

The work covers a lot of ground. The entire corridor is getting a fresh asphalt overlay, which means a smoother ride and a street that will hold up much better over time. New ADA compliant crosswalks and curb ramps are going in throughout the corridor, making it easier and safer for everyone on foot. Several intersections are being reconstructed with concrete work and curb adjustments that shorten crossing distances, improve sightlines, and help preserve on street parking. In the 800 block, the parking layout is being reconfigured with parallel parking on the north side and diagonal parking on the south side, bringing it in line with surrounding blocks and adding a few more spaces in the process.

Street projects like this one do not always get the attention they deserve. They are not flashy, but they matter. Coming on the heels of the transformational TIGER Project, these Washington Street improvements continue the work of making downtown Burlington more walkable, more welcoming, and more ready for the growth that is already happening here.

That growth is real. Downtown Burlington is home to more than 300 residential units, over 120 businesses, 25 restaurants and bars, and 25 boutique shops. The people who live here, work here, and visit deserve streets that make all of that easy to enjoy. That is exactly what this project is designed to deliver.

TO THOSE MAKING A DIFFERENCE

Thank you to the members below who renewed their 2026 membership as of March 9, helping provide the resources needed to advance the Chamber of Commerce's ongoing goals.

3E Electrical Engineering and Equipment Co.
5 Star Community Credit Union
ABC Fire Extinguisher Inc.
Access Energy Cooperative
Adobe
Advanced Home Health Care
Afinitas
AIM Credit Union
Alchemy Skin and Health
Alcohol & Drug Dependency Service of SE Iowa
Alfagomma America, Inc.
All Four Corners Travel, Inc.
Alliant Energy
Alter Metal Recycling
Altorfer Rents
Alzheimer's Association
American Eyecare
American Family Insurance - Carlos Capdevila Agency
American Ordnance
Ameriprise Financial
Anderson, Roberts, Porth, Wallace, Stewart & Werner
Apollo Senior Apartments -- Pioneer Property Management
Appleberry Orchard
Arby's Restaurant
Arnold Refrigeration, Inc.
Art Center of Burlington
Aspelmeier, Fisch, Power, Engberg & Helling, P.L.C.
BANK
Bankers Advertising
Bark & Play Daycare and Suites
Barking Dog Promotions
Barn on the Ridge
Becker's Jewelers & Gemologists
Bel Canto Chorale
Bickel's Cycling and Fitness
Big River Popcorn & Treats
Big River Resources, LLC
Big River Wind
Bluff Harbor Marina
Borghi USA, Inc.
Brennan Marine, Inc.
Brent Slocum Foundation
Brockway Mechanical & Roofing Company, Inc.
Brown's Shoe Fit
Brueck Construction, Inc
Bruner, Cooper & Zuck, Inc.
Buena Vista University
Buffalo Wild Wings
Burlington Area Homeless Shelter
Burlington Area YMCA
Burlington Bees Baseball Association
Burlington Black Water, LLC
Burlington By the Book
Burlington Community School District
Burlington Golf Club
Burlington In Bloom
Burlington Jet Stop
Burlington Junction Railway - Short Line Railroad
Burlington Municipal Band Foundation
Burlington Notre Dame
Burlington Riverfront Entertainment, Memorial Auditorium
Burlington Rotary Club
Burns & Sons Direct Appliances
Byrider/CNAC
Cardon Industries, Inc.
Carl A. Nelson & Company
Carpetland USA
Casebine Community Credit Union
C-CAT, Inc
CDM Real Estate Services
Century 21 Property Professionals
Chick-Fil-A
Children's Dental Center of SE IA
City Hope Foundation
City of Burlington
City of Mediapolis
City of West Burlington
Clean Sweep Chimney Care
CNH Industrial America, LLC
COBO USA
Collision Center
Comfort Suites
Community Action of Southeast Iowa
Community Health Centers of Southeastern Iowa
Connection Bank
Contour Airlines
Coppes Pest Solutions
Cornerstone Caregiving
Cray Law Firm, PLC
CSI Ltd
Culligan and Great River Coffee
DAME Fine Coffee
Danville Community School District
Dave Bessine Electric
Deery Brothers, Inc.
Degg's Lawn Care
Des Moines County Abstract & Title Co.
Des Moines County Board of Supervisors
Des Moines County Conservation
Des Moines County Energy District
Des Moines County Farm Bureau
Des Moines County Historical Society
Des Moines County Humane Society
Des Moines County Regional Solid Waste Commission
Designer's Viewpoint
Divine Mercy Parish
Dixon's Seamless Gutters, LLC
DMC Democratic Central Committee
DMC Republican Central Committee
Dolores' Resale Shop
Douds Stone LLC, Heritage Quarry
Dr. Brad Randolph
Dr. Mark C. Pothitakis D.D.S.
Drake Hardware & Software
Droppett
DSB Insurance Group
Eastern Iowa Tire
Edward Jones - Courtney M Gustafson
Edward Jones - Jon Hart
Edward Jones - Karen Elliott
eEngineering Co
Elite Electric
Energyefficient Systems, Inc.
Excite Consulting
F & M Bank & Trust
Fairfield Inn & Suites
Fareway Food Stores
Farm Bureau Financial Services - Tim Lundgren
Farmers Savings Bank
Fat & Sassy Barbeque
Federal Mogul Ignition LLC, A Tenneco Group Company
First Christian Church
First Congregational Church
First Interstate Bank
First Presbyterian Church
First United Church of Christ
First United Methodist Church
Focus Partners Wealth
Foodliner, Inc.
Frank Millard & Company
Freedom Insurance
French-Reneker-Associates, Inc.
Friedenheim Community
Friends of Community Field, NPC
Fye Excavating, Inc.
George's Lawn Mower, Inc.
Girl Scouts of Eastern Iowa and Western Illinois
Golden Eagle Distributing Co.
Graystone Construction
Great River Christian School
Great River Health
Great Western Supply Co.
Greater Burlington Area Sports Facilities
Grinstead & Associates
Gypsi on Jefferson

H & R Block
Hamilton-Walters Detachment 616
Marine Corps League
Harmony Bible Church
Harvest Financial
Harvestville Farm
Hawaiiwan Café
Heart Song, Inc
Hetta Gilbert
Hinterland Dairy Inc.
Hoshi Japanese Express
Huffman's Farm & Home
Hutcheson Properties, LLC
Hy-Vee Food Stores
Ideal Ready Mix Company
Imagine the Possibilities, Inc.
ImOn Communications
Industrial Motors, Inc.
Industrial Service Corp
Iowa Memorial Granite Company
Iowa State University Extension and
Outreach, Des Moines County
IowaWORKS Mississippi Valley
Iris City Cleaners & Laundering Co.
ITC Midwest
J & M Displays, Inc.
Jeffrey & Joyce Taeger
Jerilyn Horn Kitchen & Bath Design
Jerry's Main Lunch
Jet Air, Inc.
Jimmy John's
Jim's Lock & Safe, Inc.
Jolin Media
Junior Achievement of the
Heartland, Inc.
JWC Wealth Management
Ken Petersen State Farm
Kenny's Roller Ranch & Rec Center
Keystone Home
KimAnne Portrait Design
King Kleen LLC
Klingner and Associates, P.C.
Koch Fertilizer Wever, LLC
Kozlowski Law Group, LLC
KPI Concepts, LLC
K-Y Nails
La Boheme
Larry & Darya Rheinschmidt
LGH, LLC
LISCO
Lunning Chapel, Inc.
Mann's McDonald's L.C.
Martini's Grille
Matt Rinker
McClure Material, Inc
Meadow & Main, Inc.
Mediacom
Mediapolis Community School District
Menke & Company Main Office
MFS Mutual Insurance Company
Midwest Eye Clinic
Midwest Land Surveying, PLLC

Midwest Realty Group, Inc.
MidWestOne: A Division of Nicolet
National Bank
Miracle Car Wash
Mississippi Valley Council, Scouting
America
Mississippi Valley Veterans'
Memorial, Inc.
Mitchell Arms & Outdoors
Modern Welding Company of Iowa, Inc.
Mohrfeld Electric
MSM North America
MTC Technologies
Norris Asphalt Paving Co., LC
Northwestern Mutual
Nurse at Home
Optimae LifeServices
Optimist Club of Burlington/West
Burlington
Our Savior Lutheran Church
Our Yesterday Farm
Palmer Capital, LLC
Pierson Inc.
Pilot Grove Savings Bank
Players Workshop
Preferred Pet Containment
Premier Physical Therapy of Iowa
Preservation Station | Heritage Trust
Pritchard Broadcasting
Prugh Funeral Services
RE/MAX Real Estate Specialists, Inc
Refreshment Services Pepsi
Reid's Landscapes & Turf, Inc.
Reif Oil Company
Reign's Legacy Dog Grooming
Renewal by Andersen
Rheinschmidt's Flooring America
Ritter's Landscaping, Home &
Garden Center
Robberts & Kirkman, L.L.L.P.
Roberts Tire Center
Royal Printing
Russell Cellular
Ryan Harvey State Farm
Sade Suites
Saphalta Services Global LLC
Seither and Cherry Company
ServiceMaster Cleaning & Restoration
Serving it Safe With Ann, LLC
SERVPRO of Burlington
SG Construction
Sherwood Company, Inc.
Shottenkirk Superstore
Silgan Containers
Slumberland Furniture
Snake Alley Inn, LLC
Snyder & Associates, Inc.
Southeast Iowa Builders Association
Southeast Iowa Building & Construction
Trades Council
Southeast Iowa Regional Airport

Southeast Iowa Regional
Planning Commission
Southeast Soccer Academy
Southeastern Community College
Special Needs Foundation of
Des Moines County
Spirit Hollow
Standard of Beaverdale
Sterzing Food Company
Styltique
Subway
Summer Street Animal Clinic
Taeger Electric
Taste & Seek
TDT CPAs and Advisors
Tenderfoot Carpets, L.P.
The Beancounter Coffeehouse
& Drinkery
The Broadway Bar & Grill
The Buffalo Tavern
The Busted Cup Brewhouse
The Capitol
The Collective Food Hub
The Drake, LLC
The Hawk Eye
The Medium Art Store
The P-A-R-K Indoor Dog Park &
Pup Emporium
The Salvation Army Thrift Store
The Views of Burlington
Titan Broadcasting & Digital Group
Transitions DMC
Two Rivers Bank & Trust
U.S. Bank, N.A.
U.S. Gypsum
United Rentals
Valley Distribution Corporation
Viking Aggregates
Walmart Stores, Inc. Store #797
Wemiga Waste (Floyd's E-Z Way
Container Service, Inc.)
Wendy's
West Burlington Hydraulic & Supplies
West Burlington Independent
School District
Western Smokehouse Partners, LLC
Westland Mall
Wilson Rentals
Window World of Davenport, Inc.
Winegard Company
World Insurance Associates, LLC
WQAD
Young House Behavioral Health
Your Vision Financial Group
Zaiser's Landscaping, Florist
& Greenhouse
Zion United Church of Christ

**Members listed are renewals
received by March 9.**
(Parent Company Listed Only)

WELCOME NEW MEMBERS

Please welcome these new Chamber of Commerce members by sending an email, liking their Facebook page or visiting their website. Even better, stop by to introduce yourself, exchange business cards and help grow their network as well as your own!

Quality Roofing Pro

Burlington, QualityRoofingPro.com

Quality Roofing Pro is a trusted exterior restoration company specializing in residential and commercial roofing solutions. We provide expert roof repairs, replacements, inspections, and storm damage restoration, along with additional exterior services to protect and enhance your property. Our team is committed to quality craftsmanship, honest communication, and dependable service from start to finish. At Quality Roofing Pro, we take pride in helping homeowners and businesses safeguard what matters most.

CLEAN Restoration

Burlington, CleanRestoration247.com

CLEAN Restoration is a family-owned and operated restoration company proudly located in and serving Burlington and the greater Southeast Iowa area. We specialize in water, fire, and mold damage restoration, providing fast and professional response when homes or businesses need it most. Built on a foundation of integrity, honesty, and unmatched attention to detail, our team is committed to delivering the highest level of customer satisfaction on every project. CLEAN Restoration is always local, always ready, and is the trusted partner you can rely on for prompt service, expert guidance, and compassionate support to help restore your property and peace of mind. Our dedicated team is available 24 hours a day, 7 days a week.

FOR MORE INFORMATION, OR TO SCHEDULE A RIBBON CUTTING,
CONTACT MELISSA JONES AT [MJONES@GREATERBURLINGTON.COM](mailto:mjones@greaterburlington.com)

RIBBON CUTTINGS & CELEBRATORY EVENTS



**CITY HOPE FREE COMMUNITY CLINIC
GRAND OPENING**



**CORNERSTONE CAREGIVING
GRAND OPENING**

WORLD

We help our clients manage and protect their most valuable assets—their people and their business.

**RELATIONSHIPS.
RESOURCES. RESULTS.**

319-753-0144
yourteam@worldinsurance.com
www.worldinsurance.com

www.accessenergycoop.com



Owned by the members we serve
1-866-242-4232

Happy Spring!



photo by Nick Hockenberry

NELSON

CARL A. NELSON & CO.

Design-Builder | Construction Manager
General Contractor

**Deliver Value.
Build Trust. Repeat.**

Industrial/Commercial
Construction Services

www.carlnelsonco.com
Burlington, Iowa | 319-754-8415

RE/MAX

REAL ESTATE SPECIALISTS, INC.

LOCALLY OWNED
NATIONALLY KNOWN



123 Broadway St, West Burlington, IA 52655
BurlingtonIowaHomes.com • 319-752-8888
Each office is independently owned and operated

MEMBER NEWS...

SPONSORSHIP & OPPORTUNITIES

Have you ever wanted to yell "Nice swing!" when it definitely... wasn't?

Here's your chance.

We're introducing the **Heckler's Tent** at our Annual Golf Outing on Thursday, August 17, and yes, it's **exactly** what it sounds like.

The Heckler's Tent sponsor gets:

- A tented hole location
- Signage recognition
- The opportunity to (lovingly) heckle golfers as they tee off
- The power to distract, entertain, and have a lot of fun networking



**THYME AND SPICE COMPANY
NEW LOCATION**



**PERFORMING ARTS CENTER (BCSD)
GROUNDBREAKING CEREMONY**



IOWA STATE UNIVERSITY
Extension and Outreach

BUILDING A #STRONGIOWA

Des Moines County Extension

1700 W Mt Pleasant St, West Burlington, IA 52655
(319) 671-7165

www.extension.iastate.edu/desmoines



**CURBSIDE RECYCLING
COLLECTION IS AVAILABLE
AT NO CHARGE -
CONTACT US TODAY!**

**Area
Recyclers**

HazChem Center | Area Recyclers
DMC Landfill | Recycled 2 You Store | Electronic Waste

319-753-8126 • www.DMCWaste.org

Like and Follow AREA RECYCLERS on Facebook!

DMC Regional Waste Commission • 319-753-8126
1818 West Burlington Ave, Burlington, IA 52601

APRIL april

View more events at
GreaterBurlington.com/Events


EVENTS

1, 8, 15, 22 and 29 - Historic Newspaper Reading
Des Moines County Historical Society
10 AM
DMCHS.org

2 - Comedy Thursday: Mary Mack
Memorial Auditorium, 7:30 PM
BurlingtonRiverfront.com

3 and 4 - 410 Spring Fling
34 Raceway, 5 PM
34raceway.com

4 - Downtown Bunny Hop
Burlington Vintage & Co
10 AM - 12 PM and 1 - 3 PM
facebook.com/BurlingtonVintage

4 - 1  County Parks
Fundraising Banquet
Barn on the Ridge, 5:30 PM
dmccconservation.com

4 - Matt Landon
La Bohème, 8 PM
facebook.com/61552960887564

5 - Easter Buffet
Catfish Bend Convention & Event Center
11 AM - 2 PM
FunCityResort.com

9 - Business After Hours
Community Health Centers of
Southeastern Iowa, Inc., 5 - 7 PM
GreaterBurlington.com

10 - Leadership Class Project:
Salute Our Vets, Trivia Night
Eagles Club, Doors Open at 6 PM
GreaterBurlington.com

11 - Doggie Easter Egg Hunt
Community Field, 10:30 AM
DesMoinesCountyHumaneSociety.org

11 - Season Announcement Party
Players Workshop Theater, 4 PM
PlayersWorkshopTheater.com

11 - Dr. Seuss' The Cat in the Hat
Memorial Auditorium, 6 PM
BurlingtonRiverfront.com

11 - Kevin Burt
La Bohème, 6 PM
facebook.com/61552960887564

11 - The Greatest Showman Sing-along
Movie Night
Capitol Theater, 7 PM
BurlingtonCapitolTheater.com

15 - Burlington Lunchtime Chamber
Music Series
First United Methodist Church, 12:15 PM
SEISO.us

16 - Clean Out Your Files Day 2026
Area Recyclers, 8 AM - 2 PM
DMCWaste.org

16 - World Travelogue Series: Japan
Capitol Theater, 1:30 PM and 7:30 PM
BurlingtonCapitolTheater.com

17 - Ladies' Adventure Group
Starr's Cave Nature Center, 10 AM
DMCConservation.com

18 - Earth Day Clean Up
Port of Burlington, 9 AM
facebook.com/KeepBurlingtonBeautiful

18 - BrewFest
Memorial Auditorium, 1 PM
BurlingtonRiverfront.com

18 - Twitty & Lynn
Capitol theater, 7:30 PM
BurlingtonCapitolTheater.com

23 - Woman of Distinction
Catfish Bend Convention & Event Center
5 PM
facebook.com/GSEIWI

24 - Entartete Nacht: Degenerate
Art & Music
Art Center of Burlington, 10 AM - 10 PM
BTownArt.com

24 - Burlington Civic Music: Brubeck
Brothers Quartet
Capitol Theater, 7 PM
BurlCivicMusic.com

24 - 26 and 30 - May 3 - Dracula:
A Comedy of Terrors
Players Workshop
7 PM (Th - Sat) 2 PM (Sun)
PlayersWorkshopTheater.com

25 - Spring Craft & Vendor Show
Catfish Bend Convention & Event Center
9 AM - 3 PM
FunCityResort.com

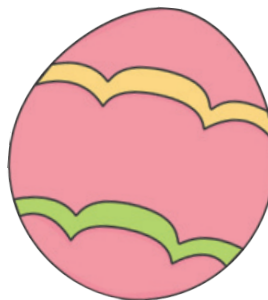
25 - Commercial Space Open House
Downtown Burlington, 10 AM - 1 PM
GreaterBurlington.com

25 - Southeast Iowa Symphony
Orchestra
Capitol Theater, 7 PM
SEISO.us

25 - Kenni Falls
La Bohème, 8 PM
facebook.com/61552960887564

28 - Coffee with the Chamber
Iowa Memorial Granite Company, 8 AM
GreaterBurlington.com

29 - Shepherd's Table Free
Community Meal
First Congregational Church, 4:30 PM
FCCBurlington.org



STANDARD OF BEVERDALE

WHAT ARE YOU
DREAMING OF? LET US
HELP YOU BUILD IT.



- ROOFING
- FENCING
- MATERIALS
- PLUMBING
- WINDOWS
- HARDWARE
- DOORS
- ELECTRICAL
- SIDING
- APPLIANCES

WE SUPPLY THE BEST PRODUCTS TO
HELP YOU BUILD THE HOME OF YOUR
DREAMS

WE CARRY YOUR FAVORITE BRANDS

Now including
the largest
selection of
Carhartt in
Southeast
Iowa



carhartt®

FOLLOW US ON   319-754-5174

STANDARD OF
BEVERDALE 
11194 TWIN PONDS DRIVE
WEST BURLINGTON, IA 52655 

KENNY'S ROLLER RANCH & REC CENTER
OPEN & REC CENTER

SKATING PARTIES
GOLF
BATTING CAGES
BASKETBALL BANKSHOT

KennysRollerRanch.com
319-752-2043 | 8989 Koestner Avenue | Burlington, IA 52601

BECKERS JEWELERS
Nobody does 'F&D', like we do

Menke & Company
CERTIFIED PUBLIC ACCOUNTANTS
Integrity & Experience at Work for You

- ◆ Tax Planning & Preparation
- ◆ Accounting & Bookkeeping
- ◆ Full-Service Payroll
- ◆ Controllershship Services
- ◆ Audit & Review
- ◆ Business Consulting

320 N. Third, Ste 300, Burlington, IA 52601
319-753-2000 • menkeco.cpa

Big River Resources
Highway 34 & Beverdale Rd
West Burlington
Phone: 319-753-1100

BigRiverResources.com

ETHANOL

Proudly Made In The
U.S.A.

CLEANER BURNING FUEL
GOOD FOR YOU.
GOOD FOR THE ENVIRONMENT.

CLEAN OUT YOUR FILES DAY 2026

APRIL 16 | 8 AM - 2 PM AT AREA RECYCLERS

Businesses and residents are encouraged to purge unneeded papers, documents, invoices, statements, magazines, catalogs, trade publications, and other paper items and bring them to Area Recyclers for Clean Out Your Files Day 2026. There is no limit to regular paper and document recycling, and a strict one copy paper sized box limit of papers that will be collected and securely shredded by Quincy Recycling at their facility in Quincy, Illinois.

As in previous years, the event will be drive-thru style with volunteers from Burlington High School & Notre Dame high school present to help unload your items. Staples and paperclips are fine, no binder clips or plastic/wire bound notebooks, please. Make plans today to clear some clutter and bring all the papers you can to Clean Out Your Files Day 2026.

Questions? Contact Darven Kendell at Area Recyclers 319-753-8126 or email dkendell@dmcwaste.org.

DES MOINES COUNTY HUMANE SOCIETY DOGGIE EASTER EGG HUNT

APRIL 11 | COMMUNITY FIELD | 10:30 AM - 12 PM

Bring your best boys & girls to Community Field for a special Easter egg hunt, just for dogs! Larger and smaller dogs will have separate hunts at 11 AM and 11:30 AM. Registration begins at 10:30 AM.

Cost is \$10 per dog; all proceeds from this event will benefit the Des Moines County Humane Society. All dogs must be leashed at all times; non-aggressive animals only, please.

For more information, follow Des Moines County Humane Society on Facebook or visit: DesMoinesCountyHumaneSociety.org.

HINTERLAND DAIRY

Opening for the
season Wednesday,
April 8!



Wednesday - Saturday 10 AM - 4 PM
Sunday 12 - 4 PM (April - December)



Visit us opening week
for farmstead cheese,
Ice cream and specials.
Enter to win a
\$50 Gift Card!



APRIL 18TH
Come enjoy grilled cheese
sandwiches for \$5
from 11 AM - 1 PM
(Proceeds go toward
Old Fort Madison Preservation)

2149 FRANKLIN ROAD, DONNELLSON, IOWA
319-470-6819

THE GREATEST SHOWMAN SING-ALONG MOVIE NIGHT

APRIL 11 | THE CAPITOL THEATER

The Burlington High School Music Booster Club invites you to sing along to all your favorite songs from The Greatest Showman. Proceeds go to BHS music students' 2027 trip. Stop in for homemade baked goods at the Music Boosters bake sale in the Capitol lobby during this event!

To purchase tickets, call the Burlington Community School District office at 319-753-6791, or email burlingtoniamusicboosters@gmail.com.



MEMBER SPOTLIGHT
Submit member information, to Brenda Levitt at blevitt@greaterburlington.com

SG General Contractor
CONSTRUCTION

- Design
- Engineering
- Construction

2204 West Mt. Pleasant Street
West Burlington, IA 52655
319-752-7154
ron@sgconstructco.com
www.sgconstructco.com

**FIRE AND WATER
CLEAN UP & RESTORATION**
24 HOUR EMERGENCY SERVICE

COMPLETE MOVE-OUTS
MOLD MITIGATION & REMEDIATION
TRAINED, UNIFORMED PROFESSIONALS

SERVPRO
OF BURLINGTON
319-754-8050
WWW.SERVPROBURLINGTON.COM

Right **Care.** Right **Place.** Right **Here.**

Great River
HEALTH

For a full list of healthcare services, visit our website
greateriverhealth.org

WEST BURLINGTON
FORT MADISON
MOUNT PLEASANT



RiverPark Place
 610 N 4th St, Ste 200
 Burlington, Iowa 52601
 319-752-6365
 info@greaterburlington.com
 GreaterBurlington.com



EARTH DAY COMMUNITY CLEANUP BRINGS BURLINGTON TOGETHER | APRIL 18

Earth Day falls on April 22 this year, but Greater Burlington is kicking things off a little early. The Earth Day Cleanup is set for April 18, and it is the kind of day that manages to be good for the community and just plain fun at the same time. Things get rolling at the Port of Burlington, where registration opens at 8 AM. Check in, grab your supplies, and get ready to head out. Gloves, bags, and everything else you need will be provided, so all you have to bring is yourself and a good attitude. Families, friend groups, and neighbors are all welcome, and kids are a big part of what makes this day special.

From there, volunteers spread out across parks, trails, and community spaces to tidy up the places we all love. It is simple, satisfying work, and there is something genuinely enjoyable about doing it alongside your neighbors.

When the morning wraps up, everyone is invited back to the Port of Burlington for a free lunch. It is a well-earned chance to relax, catch up with people you worked alongside, and celebrate a morning well spent.

After lunch, the fun continues over at the Burlington Public Library, where families can settle in for a free movie screening chosen with Earth Day in mind. It is a lovely, low-key way to finish out a day that started with getting your hands a little dirty for a good cause.

Whether this becomes a new family tradition or just a really good Saturday, Earth Day Cleanup is one of those events that leaves you feeling great about the community you call home.



**NEW DOWNTOWN
 EARTH DAY PATCH!**



Chamber of Commerce
 Economic Development
 Convention & Visitors Bureau
 Downtown Partners, Inc.

Follow The Partnership



Your Trusted Partner
 Let us help you reach your financial goals.



Member
FDIC

319-753-9100 | tworivers.bank