

The **P**ARTNERSHIP

OPEN FOR BUSINESS

YOUR BUSINESS LOGO HERE

HAS A COVID-19 BUSINESS OPERATIONS PLAN IN PLACE

- Disinfecting & sanitation plan
- Physical distancing measures
- Protective gear (masks, gloves, barriers, etc.)
- Employees trained on COVID -19 operation procedures
- Temperature & symptoms checks on employees

MAXIMUM CAPACITY _____
(Number of people allowed in at one time)

We have done our best to minimize the possibility of exposure to the coronavirus, but exposure cannot be completely guaranteed.

PLEASE ENTER AT YOUR OWN RISK - PLEASE DO YOUR PART:

- No more than _____ people in your group
- Do not enter if you feel sick, have a cough or are sneezing
- A face mask is recommended
- Maintain distance of 6 feet between yourself and others
- Leave at-risk individuals at home





Perseverance in Times of Crisis

by Della Schmidt

Like many local businesses and organizations, the Greater Burlington Partnership has had to make some difficult decisions during the COVID-19 crisis and economic downturn. Due to some revenue sources dropping to zero and others cut by one

third to as much as a half, in April the Partnership faced a \$500,000 budget deficit. The use of more than \$100,000 from reserves and implementing significant spending cuts across all Partner entities provided some relief, but by mid-May the organization was still left with a deficit conservatively projected to exceed well over \$100,000.

Future revenues are uncertain for at least the next 6 to 18 months. Despite the deep cuts that were implemented throughout the operating budgets and the tapping of reserves, it was not enough. Incredibly tough decisions had to be made to ensure the solvency of the organization.

In May, the Partnership took the monumentally difficult step to eliminate one of the Executive level positions, that of the Vice-President. Unfortunately, it was also necessary to take the additional step of furloughing the Partnership's Office Manager indefinitely. Further, pay cuts across remaining staff were implemented, with the largest pay cut taken by the CEO. These steps were taken to protect as many Partnership employees as possible and to ensure the personnel resources needed to continue the work of the organization. As one can imagine, taking these steps was difficult enough, but was even more challenging because of the long-standing relationships that existed with these affected staff members.

While extremely difficult decisions, these were necessary steps to keep the organization on solid financial footing. The Greater Burlington Partnership will remain focused on the immediate needs of area businesses as they navigate the COVID-19 economy.

One such commitment is helping businesses recover as they reopen from the COVID-19 shutdown.

As restrictions slowly begin being lifted, the Greater Burlington Partnership is taking an active role in keeping businesses armed with information and tools to help the transition back to work operate as smoothly as possible. The first tool in this effort is the "Reopening Your Business Toolkit."

This edition of the Partnership Newsletter contains an overview and examples of the new "Reopening Your Business Toolkit." This new toolkit includes guidance, signage, customer relations information, and more. Its goal is to help local business leaders navigate the new normal and ensure the safety of the region while providing guidance to safely serve customers and accommodate employees.

As always, working on behalf of the business community remains a top priority, and the Greater Burlington Partnership will continue to support the workforce and business development needs of the region.

Remember, the Greater Burlington Partnership is here to help you and your business during this time. Do not hesitate to call or email with your questions, concerns or ideas. The Partnership will continue to update the resources to serve you during this fluid situation.

Thank you for your support. Greater Burlington is resilient. Greater Burlington will get through this. Together, Greater Burlington will persevere.



Belinda Colwell
Office Manager
319-752-6365
bcolwell@greaterburlington.com



Barb Gerst
Director of Finance
319-208-0044
bgerst@greaterburlington.com



Cindy Henry
Customer Relations Specialist
319-208-0052
chenry@greaterburlington.com



Jeremy Hess
Dir. of Economic Development
319-208-0050
jhess@greaterburlington.com



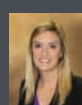
Chelsea Lerud
Convention & Visitors Bureau
Exec. Dir. 319-208-0045
clerud@greaterburlington.com



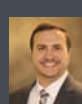
Brenda Levitt
Graphic Designer
319-208-0047
blevitt@greaterburlington.com



Rachel Lindeen
Event Coordinator
319-208-0046
rlindeen@greaterburlington.com



Emily Pattee
Welcome Center Manager &
Young Professionals
319-752-8731
epattee@greaterburlington.com



Dustin Roth
Marketing & Communications Dir.
319-208-0048
droth@greaterburlington.com



Della Schmidt
President & CEO
319-208-0043
dschmidt@greaterburlington.com



Represents a Partnering for the Future III Initiative.

SUBSCRIPTIONS: Price is \$24, which is included in annual events fees. Non-members: \$4 per issue. Periodicals postage paid at Burlington, Iowa.
POSTMASTER: The Partnership is published monthly by the Greater Burlington Partnership 610 North Fourth Street, Suite 200, Burlington, Iowa 52601.
POSTMASTER: send address changes to Greater Burlington Partnership (USPS 001-692) 610 North Fourth Street, Suite 200, Burlington, Iowa 52601.

ON THE COVER

Greater Burlington "Open for Business"



These unprecedented times have been challenging, to say the least. Thank you for all that you're doing to help the Greater Burlington area navigate this COVID-19 experience.

Greater Burlington businesses are anxious to reopen their doors. The Partnership wants to help you be prepared for business operations in this COVID-19 era. On pages 8 and 9 you'll find information on the Partnership's new toolkit that will help to navigate the new normal and ensure the safety of the region, providing guidance to safely serve customers and accommodate employees.

The Greater Burlington Partnership strives to be your one-stop business resource to assist during the coronavirus

pandemic, connecting you to reliable and accurate information. The Partnership is here for you – advocating for your business at the state and federal levels and providing resources to help you protect the health of your workforce and operations. Please check the Business Resources page at GreaterBurlington.com on a regular basis as the site is updated frequently with the latest links and information.

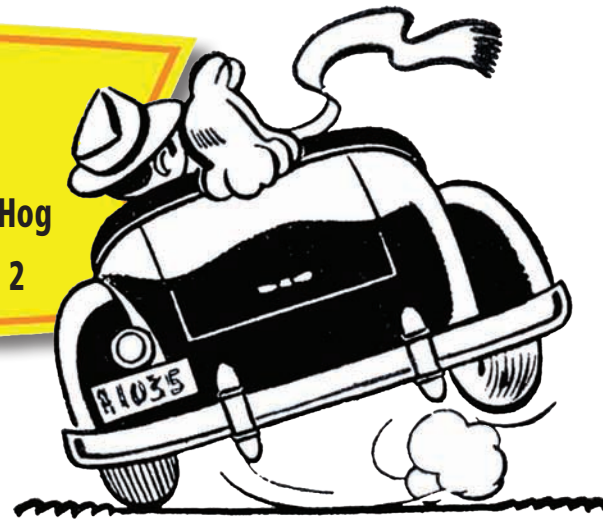
Thank you for your support and courage as the community continues to navigate through this pandemic. Greater Burlington will get through this together.

5 & V Drive-In

Looking for a fun way to spend summer evenings with friends and family? Then head down to the updated 5 & V experience – downtown Burlington’s outdoor theater! Four great movies will be shown this summer. There’s no admission for the events, though donations are accepted. The movies will start at dusk. Things will happen a little differently this year but there will still be lots of fun!

Follow Downtown Burlington for updates on each movie’s safety protocol and Drive-In location.

Burlington Elks Lodge - Saturday, June 6 - Frozen II
34 Raceway - Friday, June 19 - Herby Fully Loaded
Iowa WORKS - Saturday, June 27 - Sonic the Hedge Hog
American Ordnance - Saturday, July 11 - Incredibles 2



Access Energy Cooperative
 A Touchstone Energy Cooperative
Happy Father's Day
 Call us 24/7 at
1-866-242-4232
www.accessenergycoop.com

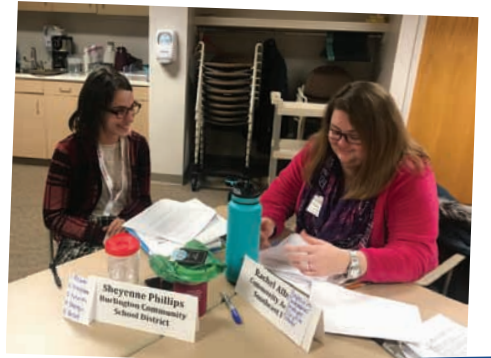
Great River HEALTH
 Your health counts.
greatriverhealth.org

TEAM STAFFING SOLUTIONS, INC.
 Providing solutions to your staffing needs since 1996
 Clerical Industrial Professional
 We specialize in temp-to-hire, direct hire and temporary staffing
Are you tired of...
 Posting ads? Recruiting?
 Interviewing? Screening candidates?
 Payroll? Worker's comp? Unemployment?
Call: 319-753-9844
 Satisfaction *guaranteed!*

MYERS CONSTRUCTION
 GENERAL CONTRACTOR
 SINCE 1976
 Building the Project of Your Dreams
 On Time, On Budget and Above Expectations
 Residential and Commercial
 Open Monday - Friday, 8 AM - 5 PM, 319-985-2170
www.myersconstructioninc.net

Greater Burlington Leadership

Great Leaders Today and Tomorrow



The Chamber of Commerce invites you to sign up for Greater Burlington Leadership, a professional development series designed to strengthen leadership skills by empowering and educating people who live and work or have interest in Greater Burlington. The program gives both experienced and developing leaders a broader view of civic responsibilities and opportunities through direct contact with a wide spectrum of institutions and people who shape the community where we live and work.

2020 - 2021

SESSION TOPICS: Workforce, Education, Economic Development, Government Relations, Healthcare, Public Safety, and Environment

SESSION DATES: Opening 2-day session October 8 & 9, October 28, November 18, December 9, January 6, February 3 & 4, March 10, April 24, May 12 and May 17

NOMINATE OR APPLY: Candidates may be nominated by June 30 or apply by July 31 online at GreaterBurlington.com/Leadership.



Thank you to the sponsors who help make Greater Burlington Leadership possible: Klingner & Associates, CBIZ, Great River Health, and 101.7 The Bull KBKB-FM and The New Mix 107.3 KGRS.

WIN A CHANCE TO SHOP DOWNTOWN BURLINGTON!

A local essential business owner is thankful to have been able to do business during the COVID-19 crisis and wants to help downtown businesses who may have been negatively affected by the pandemic. "My wife and I feel very fortunate and want to pay it forward. We hope to generate some business to help our downtown get back on its feet." Working through Downtown Partners to remain anonymous, the donor has purchased dozens of \$25 gift cards from various downtown restaurants, bars, service and retail stores. Submissions were collected in May.

Winners will be announced
June 4 at Farmers Market





YP SPOTLIGHT
Brock Anderson

Employer: Hope Haven Area Development Center Corp.
Hometown: Fort Madison, IA | YP Member: 1.5 years

Why did you join YP? When I moved back to Burlington, I wanted to see the ways the area had progressed. I joined YP to network with other young professionals in the area. YP does a good job of giving young professionals a glimpse into what different organizations/business have going on.

Which community organizations/events do you volunteer for? I'm a member of Kiwanis and a Chamber of Commerce Ambassador.

What do you enjoy most about Greater Burlington? I enjoy the versatility of Greater Burlington. From watching a professional Minor League Baseball game at Community Field, to enjoying drinks and food with a view of the Mississippi. There are also a lot of great parks, golf courses, and lakes in our area to take advantage of. The best part is these activities are within a close proximity of each other.

Unique about me: I'm employed by the same organization as my mother (we work together). It has been really cool seeing her in a different environment other than being a mom. We are still on speaking terms as far as I know (haha).

June events to be determined. Follow the Greater Burlington YP Facebook group page for updates.
Questions? Email youngprofessionals@greaterburlington.com

2020 Gold Sponsor: CNH Industrial

Greater Burlington Young Professionals
A professional and social group for individuals between the ages of 21 - 40.

Thinking of joining YP?

Email youngprofessionals@greaterburlington.com for more information.

KENNY'S ROLLER RANCH
Skating . Parties . Golf .
Batting Cages . Basketball Bankshot

8989 Koestner Avenue
Burlington, IA 52601

319-752-2043
KennysRollerRanch.com

STANDARD
of Beaverdale
&
BECKMAN
TV & APPLIANCE

Your One Stop to
Building Your Dream!

ACE Hardware
The helpful place

RED WING SHOES
carhartt

319-754-5174
SOBACE.com

Menke & Company
CERTIFIED PUBLIC ACCOUNTANTS
Integrity & Experience at Work for You

- ◆ Tax Planning & Preparation
- ◆ Accounting & Bookkeeping
- ◆ Full-Service Payroll
- ◆ Controllership Services
- ◆ Audit & Review
- ◆ Business Consulting

320 N. Third, Ste 300, Burlington, IA 52601
319-753-2000 • Menkeco.com

MANY DESTINATIONS
ONE AMAZING PLACE

P Z A Z Z I
319-753-2946
THEPZAZZ.COM

Gambling problem? Call 1-800-BETS-OFF

Bright Spots...

While the news surrounding Covid-19 has been nonstop, some great companies and projects have been going nonstop as well. Out near the FunCity Turf complex, work has progressed nicely on the new road connecting South Broadway and West Burlington Avenue. The road is on the south side of the FunCity Turf and will be a great traffic relief when sports resume. The road also allows for future development of Flint Ridge Business Park. Also on the south side of FunCity Turf, a new solar panel field is being installed to help with utility costs.

Locally there have been a number of companies quickly pivoting to address changing needs during this crisis. Silgan Containers has been full steam ahead making five million cans per day to meet the increased demand for the critical food supply chain. All of this while doing temperature checks on every employee and a complete sanitization process between each shift! Thank you, Silgan, for keeping your employees safe, and the country fed! In West Burlington, KPI Concepts has not only continued to meet their usual demand for check-stands, cabinets and displays, but they also quickly answered the call to produce the clear safety partitions seen in just about every store. Partnering with Frank Millard for metal fabrication, KPI Concepts quickly produced 6,000 of these in just three weeks. Great job keeping both customers and employees well protected and the economy moving!



KPI
Concepts, Inc.

Air Choice One

SOUTHEAST IOWA REGIONAL AIRPORT

DAILY FLIGHTS
Chicago, Minneapolis St. Paul,
Mason City, and St. Louis
AIRCHOICEONE.COM / 1-866-435-9847

SG General Contractor
CONSTRUCTION

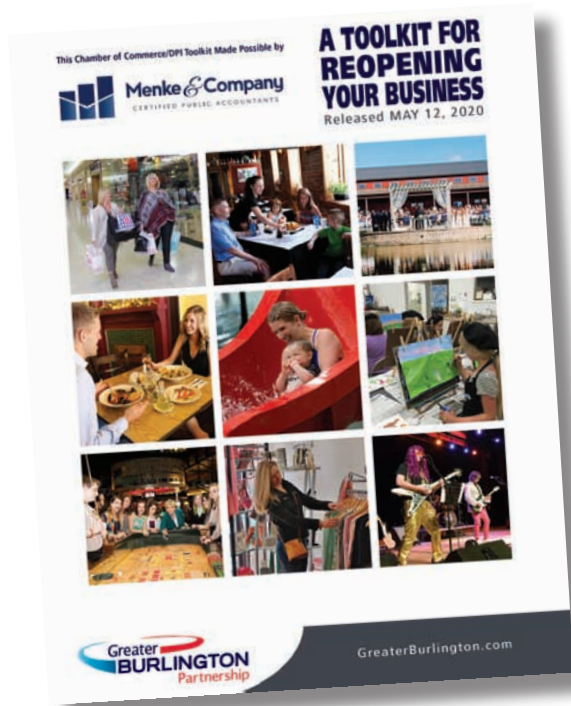
- Design
- Engineering
- Construction

2204 West Mt. Pleasant Street
West Burlington, IA 52655
319-752-7154
ron@sgconstructco.com
www.sgconstructco.com

RIDDLE'S
JEWELRY

Westland Mall
550 South Gear Avenue
W. Burlington, IA

Check us out online: RiddlesJewelry.com



Introducing the Reopening Your Business Toolkit

The Reopening Your Business Toolkit is a great resource to help reopen your business in the post COVID-19 era. This 48 page free of charge toolkit includes guidance, signage, and customer relations information to help you safely and successfully reopen your business.

Greater Burlington businesses are ready and anxious to reopen their doors. The Greater Burlington Partnership wants to help you be prepared for business operations in this COVID-19 era. This new toolkit will help you navigate the new normal and ensure the safety of the region, providing guidance to safely serve customers and accommodate your employees.

Included in the Toolkit:

- How to clean and disinfect according to the CDC
- Guidance on talking to your employees as they return to work
- Checklist to reopening your business & daily cleaning checklist
- Signage for your business
- Reopening guidance by industry
- Workplace safety guidelines
- Marketing tips
- Additional resources

Table of Contents

Opening letter to business leaders,	2
Disclaimer,	3
Table of contents,	4
General guidelines for all industries,	5 - 6
Communicating with your team,	7
Preparing your space,	8
Cleaning and disinfecting,	9 - 13
Social distancing,	14
Reduce the risk of spread of respiratory illness,	15
PPE,	16 - 17
How long COVID-19 lives on surfaces,	18
Hiring in the age of covid-19,	19
Farmers markets,	20
Fitness centers,	21
Restaurants & coffee shops,	22 - 29
Manufacturing,	30
Retail-general,	31 - 33
Checklist for health and safety planning,	34 - 37
Retail reopening plan and checklists,	38 - 41
Pre-opening checklist,	42 - 43
Symptoms and social distancing signs,	44 - 45
Additional resources,	46
Closing,	47

If you have questions about application of public health principles to your business, please contact Des Moines County Public Health Department. They can help you with your questions to determine how to apply information to your particular situation. Email Christa Poggemiller, RN, BSN, LMSA at poggemiller@dmcounty.com

- 4 -

This Chamber of Commerce/DPI Toolkit Made Possible by



Menke & Company
CERTIFIED PUBLIC ACCOUNTANTS

The Reopening Toolkit is a benefit of your Chamber of Commerce membership or as a stakeholder in Downtown Partners, Inc.

OPEN FOR BUSINESS

YOUR BUSINESS LOGO HERE

HAS A COVID-19 BUSINESS OPERATIONS PLAN IN PLACE

- Disinfecting & sanitation plan
- Physical distancing measures
- Protective gear (masks, gloves, barriers, etc.)
- Employees trained on COVID -19 operation procedures
- Temperature & symptoms checks on employees

MAXIMUM CAPACITY _____

(Number of people allowed in at one time)

We have done our best to minimize the possibility of exposure to the coronavirus, but exposure cannot be completely guaranteed.

PLEASE ENTER AT YOUR OWN RISK - PLEASE DO YOUR PART:

- No more than _____ people in your group
- Do not enter if you feel sick, have a cough or are sneezing
- A face mask is recommended
- Maintain distance of 6 feet between yourself and others
- Leave at-risk individuals at home

This Member of Commercial/DI Toolkit Made Possible by



GreaterBurlington.com

Thank You For Practicing SOCIAL DISTANCING

Please keep at least 6-feet between you and the next customer



THANK YOU!

If you have any of the following symptoms or have been around anyone with a confirmed COVID-19 diagnosis in the last 14 days Please Do Not enter the store.

SYMPTOMS:

- Cough
- Shortness of breath
- Fever
- Chills
- Shaking with chills
- Muscle pain
- Headache
- Sore throat
- New loss of taste or smell

IN THE WORKPLACE

Use social distancing where possible.



Keep at least six feet apart from other people as much as possible. Stay home if you are feeling ill.

Wash your hands.



Wash your hands often for at least 20 seconds. If soap and water are not available, use hand sanitizer that contains 60% alcohol. Avoid touching your face, nose and eyes.

Wear face masks.



Wear a face mask covering your nose and mouth.

If working at a health care facility, follow guidelines for use of other PPE, such as gloves, gowns, etc.

Clean and disinfect your workplace.



Clean and disinfect common spaces regularly. Give attention to high-touch areas.

Preventing the Spread of COVID-19 While in the Workplace

Presenting Sponsor:



GreaterBurlington.com

Call the Partnership to request your **FREE Reopening Toolkit** with customized signage or visit GreaterBurlington.com/covid19/reopeningtoolkit and fill out the toolkit request form.

GENERAL RECOMMENDATIONS TO PROTECT EMPLOYEES & CUSTOMERS

4/27/20

In addition to following all directives of the Gov considering reopening must adhere to the follow.

1. Follow CDC guidance related to Cleaning and frequent cleaning and disinfecting of all high touch.
2. Encourage and provide supplies to allow for employees and the public.
3. Provide reminders to employees and members from others when in the facility and mark six foot.
4. Post signage at the door indicating no one should have symptoms or have been around anyone with 14 days.
5. If an employee or a member of the public has that information with management, leave the facility.
6. Members of the public and employees should (practical) if staying at least six feet away from others.
7. Anyone who is high risk for more severe COVID-19.
8. Businesses should continue to follow IDPH's best practices for detecting and reporting outbreaks.
9. Businesses should use messaging to remind employees to protect their own health while at work.

KEEPING THE WORKPLACE SAFE

- Practice good hygiene
- Stop handshaking & avoid touching face
- Increase ventilation
- Use video conferencing
- Adjust/postpone large gatherings
- Limit business travel
- Limit food sharing
- Stay home if a family member is sick
- Use booking system to stagger customers
- Limit cash handling
- Use online transactions
- Practice distancing
- Hold meetings in open spaces
- Remind staff of hand washing
- Sanitize high traffic areas
- Comply with COVID-19 guidelines

be at higher risk for severe illness, such as if your team's health is of the utmost importance for reopening.

Educate employees about how:

- Employees can take steps to protect serious chronic medical conditions
- Follow the policies and procedures work meetings and travel.
- Stay home if you are sick, except to inform your supervisor if you have someone in your house is sick.
- Wash your hands often with soap and 60% alcohol if soap and water are not available.
- Avoid touching your eyes, nose, and mouth.
- Cover your mouth and nose with a Tissue used tissues in the trash and if soap and water are not available.
- Learn more about coughing and sneezing.
- Clean AND disinfect frequently touched surfaces, handrails, and door knobs.
- Practice social distancing by avoiding or two meters from others when possible.
- If an employee asks for help, refer them to a healthcare provider and/or call 911.

- Keep at least six feet apart from other people as much as possible. Stay home if you are feeling ill.
- Wash your hands often for at least 20 seconds. If soap and water are not available, use hand sanitizer that contains 60% alcohol. Avoid touching your face, nose and eyes.
- Wear a face mask covering your nose and mouth. If working at a health care facility, follow guidelines for use of other PPE, such as gloves, gowns, etc.
- Clean and disinfect common spaces regularly. Give attention to high-touch areas.

Preventing the Spread of COVID-19 While in the Workplace

Presenting Sponsor:

GreaterBurlington.com

DEEP CLEANING

The website below connects you to a list of companies who perform commercial cleaning. This list was compiled by CIBAS at Iowa State.

Resource for Commercial Cleaning Companies in Iowa: cibas.iastate.edu/files/publications/COVID-19_Cleaning_Service_Suppliers.pdf

Source: idph.iowa.gov/Portals/1/images/files/COVID19IDPH

Source: cdc.gov/coronavirus/2019-ncov/community/guidance-business-response.html

Sports Grant Applications Available Soon

The CVB is now accepting applications for the FY21 Sports Grant. Any Des Moines County amateur sporting event that attracts participants and spectators from outside an 80-mile radius is eligible to apply for the grant. Events must take place between July 1, 2020 through June 30, 2021. Applications and a copy of the grant guidelines are available at GreaterBurlington.com.

Applications are reviewed by the Greater Burlington Sports Commission. Selected partners are included on the Convention & Visitors Bureau's application for funding to the Iowa Economic Development Authority.

Applications are due to Chelsea Lerud Thursday, June 15 at 4 PM. Awards will be announced in September.

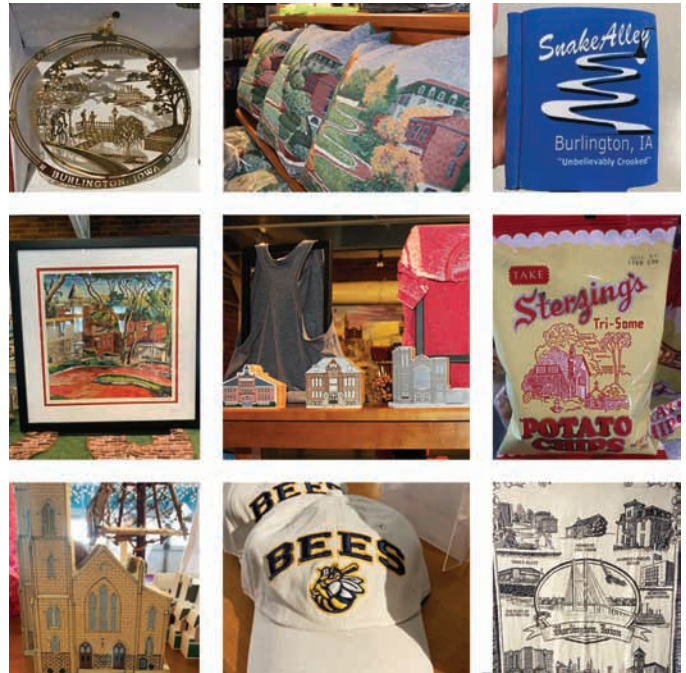
Welcome Center Store

The Port of Burlington Welcome Center now offers Greater Burlington gifts and souvenirs for purchase. The store is available online for items to be picked up on site or shipped to any destination in the United States. Check out the online store to purchase a piece of the community to display in your home.

Products Available Include:

- Artwork
- Burlington Bees Baseball Memorabilia
- Christmas Ornaments
- Keychains, Pins & Geodes
- Home Décor
- Local Event T-shirts
- Sterzing's Potato Chip Company Memorabilia and products
- Wildlife Lakes Elk Farm products

New products are added to the inventory often. Follow the Port of Burlington Welcome Center on Facebook to stay in the know.



Visit online store: <https://my-site-109475-100357.square.site>

Tired of Waiting on Unpaid Bills?
Let the professionals at the Financial Adjustment Bureau take care of your past due bills and bad checks.

**Commercial • Professional • Retail
No Collection ~ No Charge**

FINANCIAL ADJUSTMENT BUREAU INC.
612 Jefferson • Burlington, IA
319-753-6756

Energy For The Future
Big River Resources
Highway 34 & Beaverville Rd
West Burlington
Phone: 319-753-1100

BigRiverResources.com

ETHANOL

Proudly Made In The U.S.A.

**CLEANER BURNING FUEL
GOOD FOR YOU.
GOOD FOR THE ENVIRONMENT.**

BECKERS JEWELERS

For The Moments That Matter!

Your Full Service Jeweler!

401 S. Gear Ave. | W. Burlington, IA
BeckerDiamonds.com

Zaiser's
LANDSCAPING
FLORIST & GREENHOUSE

2400 SUNNYSIDE AVE • BURLINGTON, IA • 319-752-6871

ZaisersLandscaping.com

CVB Work Continues



Even though COVID-19 has caused travel and tourism to remain at a standstill, that doesn't mean the work of the Convention & Visitors Bureau has stopped as well. During the last few months, the CVB has continued to work hard behind the scenes. Once federal and state guidelines allow for the reopening of leisure travel, the CVB is prepared to launch two marketing campaigns to encourage visitors to spend time in Greater Burlington.

Industry experts are indicating that regional road trips will be the first group of travelers to begin to recover. Research is indicating travelers will be willing to drive about 200 miles for their first trip. Potential visitors will be seeking these travel ideas through digital marketing and social media.

We look forward to welcoming visitors again when the time is right.

WELCOME NEW MEMBERS

Darryl Varner
West Burlington, Individual Member

Individual Chamber of Commerce memberships are for any interested person who would like to support the work of the Chamber; be included in networking or volunteer opportunities or just keep in the know! It's great for retired business people and newcomers to the community. Welcome, Mr. Varner!

For information on membership, contact Cindy Henry.

MAKING A DIFFERENCE

Thank you to the members below for renewing their membership and providing the resources to accomplish the ongoing goals of the Chamber of Commerce.

- Burlington Golf Club
- Burlington Little League
- Burns & Sons Direct Appliances
- Clover Creek Event Venue
- Detailing Solutions, LLC
- Industrial Service Corp.
- Iowa Illinois Office Solutions
- Ivy Bake Shoppe, Inc.
- Queso's Mexican Bar & Grill
- The Buffalo Tavern
- Wake N Bake Breakfast Co.

Those listed are renewals received from 04-16-2020 through 05-13-2020.

**FIRE AND WATER
CLEAN UP & RESTORATION**
24 HOUR EMERGENCY SERVICE

COMMERCIAL OR RESIDENTIAL
COMPLETE MOVE-OUTS
MOLD MITIGATION & REMEDIATION
TRAINED, UNIFORMED PROFESSIONALS

SERVPRO®
OF BURLINGTON

319-754-8050 OR 877-754-8050
WWW.SERVPROBURLINGTON.COM

**MANY DESTINATIONS
ONE AMAZING PLACE**

P Z A Z Z | 319-763-2946 THEP2AZZ.COM

**electronic
engineering**

- Motorola Two-Way Radios
- Security Cameras/ CCTV
- Alarm & Monitoring Systems
- Public Address Systems

We Provide

- Technical service, maintenance, and support
- Software and support agreements
- Site survey & Elevations
- System Design
- Turnkey Installation

126 N Main St Mt Pleasant • 319-385-7650
www.eengineering.com

sears
HOMETOWN STORE

Lease it, own it!
No credit required!

Scott and Sharon Anliker
2750 Mt. Pleasant St.
319-753-6580



CFDMC.org

Community Foundation of Des Moines County's Wilson Family Foundation Endowment Awards 2020 Grants totaling \$23,124.

The Community Foundation of Des Moines County's Wilson Family Foundation Endowment has awarded a total of \$23,124 to Burlington Area Homeless Shelter for general support, Salvation Army for COVID-19 relief support and TransitionsDMC, Inc to use for the Cause For Hope Campaign.

Transitions DMC, Inc's goal is a paradigm shift for the Burlington community and this population. Those who face homelessness depend on TransitionsDMC as they try to navigate a new way of life. The Cause for Hope Campaign is geared toward securing a clean and safe environment for those who need the services. Some need support to regain their footing after devastating loss; some simply require a place to lay their head at night to recharge and regroup.



Gus Macker

In these trying and uncertain times due to the COVID-19 pandemic, the Greater Burlington Convention & Visitors Bureau has made the difficult decision to cancel the Gus Macker tournament scheduled for August 1 – 2, 2020. The health and safety of the players, volunteers, sponsors, and spectators will always be the highest priority. With so many unknowns due to the global health crisis, the long-term financial ramifications were also considered with this decision.

Thank you to all who supported the event in 2018 and 2019. It truly was a community effort and the support of the sponsors, along with the work of the volunteers and officials does not go unappreciated. Gus Macker was a fun and special event to host in the community.

Join us for our 91st Season

Our 2020-21 season opens September 17 with Shaun Johnson Big Band & Tonic Sol Fa and ends May 15, 2021 with The Texas Tenors.

There are 9 more great shows in between.

Call now to reserve season tickets.

Phone: 319.752.0336

www.burlcivicmusic.com

Like us on facebook 

Presented by the Burlington Civic Music Association

MEMORIAL AUDITORIUM



BROCHURES • GIFTS • INFORMATION • SOUVENIRS

400 N Front St, Burlington | 319-752-8731 | Visit online store at My-Site-109475-100357.square.site

I AM... Downtown Burlington

Presented by Downtown Partners, Inc.

"I am Downtown Burlington" video series

Downtown Burlington recently launched "I am Downtown Burlington" a virtual interview series with local merchants, business owners and volunteers. Each video features an online interview showcasing a business's products, services and insight to how the business came to be.

Follow Downtown Burlington, Iowa on Facebook to catch the latest interview.

Consumer Campaign 2020 Update

The Chamber of Commerce Consumer Campaign has shifted gears in light of the COVID-19 pandemic. While travel has ground to a halt and people are staying at home, the Consumer Campaign focused on supporting local retailers and local restaurants. Two campaigns have been running to spread the word on how to support local businesses - Support Greater Burlington and Greater Burlington Delivers.

The Support Greater Burlington campaign's goal is to get people to think local first instead of buying from an online retail giant. In addition to reminding people they can get their daily essentials right here in Greater Burlington, this campaign gave free and low cost examples of how to support local retailers. To date the ads have been delivered over 87,000 times.

Greater Burlington Delivers campaign's goal is to let area residents which restaurants and food services are open for business via pick up or delivery. Facebook and Instagram ads were delivered to area residents where they are spending large amounts of time during quarantine - in their home and on their phone. To date the ads have been delivered over 127,000 times.



GreaterBurlington.com

Let's help customers in need, together - Energy Assistance is available to families in need

Get help paying your energy bill

If you, or someone you know, is having a financial crisis, there are resources to help. The federal government has increased energy assistance funding to several programs due to the crisis.

Financial energy assistance programs include:

- Low-Income Home Energy Assistance Program (LIHEAP)
- Crisis Funds
- Hometown Care Energy Fund

These funds are provided on a first-come, first-served basis. Alliant Energy has options to help you manage your Alliant Energy bill.

- If eligible, payment arrangements are available.
- You can now pay with a credit card.
- These options are available at AlliantEnergy.com/myaccount.

You're not alone. The community is all powering through, together. To find energy assistance resources and where to apply, call 211 or visit AlliantEnergy.com/energyassistance.

It's Electric Entertainment

As times are changing, your needs change too. One thing that never changes is the reliable service provided by It's Electric Entertainment. In addition to premium DJ, Photobooth, and Event Entertainment they are pleased to announce their certified Wedding and Event Planning Coordinator along with the new Event Live Streaming Service. Let It's Electric Entertainment help plan your next event beginning to end, or just handle the day-of live-stream for guests who can't travel. The team is here to help make your next event an experience!

Check out the website at ItsElectricEntertainment.com for more information, or follow on Facebook.

Des Moines County Fair, July 29 - August 4

"Boot, Jeans and Iowa Dreams" - For 167 years the Des Moines County Fair has been a part of the community and this year is no different! The Fair remains dedicated to the development of agricultural education opportunities for the county's youth, and in this time of uncertainty its even greater. The highlight of Fair this year is "Barnyard Buddies"; the new mentoring program pairs a special needs exhibitor with a 4H/FFA mentor. Mark your calendar: Thursday evening the buddies will take center stage. One of the many questions fielded is cost? Simply put, DMC Fair is the best FREE event this summer! Follow on Facebook or check out DesMoinesCountyFair.com.

Detailing Solutions - Now Open For Business

Detailing Solutions is now located at 550 S Gear Ave, Ste 1, West Burlington. In the first year of business they outgrew their previous shop which led to the new Westland Mall location. You might recognize the new location as the old JCPenny space on the south side of the mall. It may be a new location, but be assured their quality of work is still top-notch. Feel free to stop by or give them a call at 319-209-2002. Thank you for your business.

The Need for Clean!

Guaranteed Clean cleans commercial properties, including construction clean-up, specializing in offices/businesses. Currently offering quotes for spring deep cleans and COVID-19 deep cleans. All cleaning products, techniques and equipment are CDC certified. Daily, weekly, bi-monthly cleaning service is available. The company has over 10 years of experience in the residential and commercial cleaning industry. Experienced, knowledgeable, friendly and healthy team members (temperatures of each employee are taken before every shift). Insured and bonded, serving all of Southeast Iowa.

To submit member information, contact Brenda Levitt



Area Recyclers

HazChem Center | Area Recyclers

DMC Landfill | Recycled 2 You Store | Electronic Waste

319-753-8126 • www.DMCWaste.org

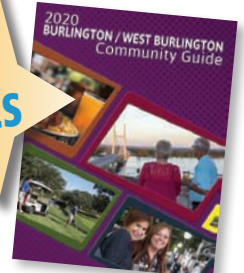
Like and Follow AREA RECYCLERS on Facebook!

Des Moines County Regional Solid Waste Commission
1818 West Burlington Ave, Burlington, IA 52601



MACK NEW & USED TRUCKS
732 Wapello St. Mediapolis
319-394-9143 SINCE 1956
www.himack.com

2020 GUIDES



**COMMUNITY GUIDES
GET THEM FREE**
Call us 319-752-6365



SUMMER FUN

by Kay Weiss

Baseball, biking, golf, running, tennis, archery, and football have all been activities that garnered support from the Chamber of Commerce during its 100-year history. While there were seldom monetary awards, the Chamber of Commerce provided the trophies given to winners of races and tournaments for decades.

Support of the Burlington Bees has been a main-stay of Chamber of Commerce activities, but in April, 1931, the downtown merchants voted not to close for the Bees' opening game on May 20. The Bees disbanded in 1933, but, after a fifteen-year hiatus, the Chamber of Commerce partnered with the Cleveland Indians to bring professional baseball back to Community Field, and Oliver Reiley, secretary of the Chamber of Commerce, became head of the Burlington Baseball Club in 1947. In April, 1952, the "Flints" new season was kicked off with a "stag only" banquet, tickets \$2 per person. When fire destroyed the bleachers in 1971, the Chamber of Commerce led the efforts to rebuild Community Field to keep professional Minor League Baseball in Burlington. Both the Chamber of Commerce and The Hawk Eye supported a Vision Iowa application for a State of Iowa grant that made improvements to Community Field a reality in 2004.

In May, 1931, the Chamber of Commerce sponsored an invitational track meet "under the lights" at Bracewell Stadium. Later that same year they promoted a "charity grid contest" between the football teams of Carthage College and Burlington Junior College.

The Shamrock Shuffle is a walk/run event begun by the Chamber of Commerce Greater Burlington Leadership Class of 2012/13. This race through Crapo and Dankwardt Parks was designed to build support for the Burlington Community School District's After School Program. Billed as a "color run," the event continues to occur on the weekend nearest St. Patrick's Day each spring under the direction of the Burlington Kiwanis Club.

Bicycle sports have brought many people to Greater Burlington with the support of the Chamber of Commerce organization and its members. RAGBRAI, the iconic Iowa biking event, has landed in Burlington six times since its inception by the Des Moines Register in 1973. The Snake Alley Criterium, an event once voted the 5th best criterium in the country by readers of a biking magazine, draws biking enthusiasts from all over the Midwest to Iowa as part of criterium racing events on Memorial Day weekend each year.

A variety of golf tournaments have marked the summer months for Chamber of Commerce members, building camaraderie and friendly rivalries. The Highway 34 Coalition had an annual golf outing for several years. The present Golf Classic was begun in 1999 and is held annually in August.

Chamber of Commerce support for "The Turf" was vital to the recent development of this not-for-profit indoor sports facility. With its soccer fields, practice areas, and snack availability, The FunCity Turf will draw active people to the community year-round.





RiverPark Place
 610 N 4th St, Ste 200
 Burlington, Iowa 52601
 TELEPHONE 319-752-6365
 FAX 319-752-6454
 info@greaterburlington.com
 GreaterBurlington.com



**JEFFERSON ST
 FARMERS MARKET**
 ON JEFFERSON ST, 300 & 400 Blocks
 Every Thursday 4:30 - 7 PM

Thank you to our
 June Market Sponsor



The region's best farmers market takes place every Thursday from 4:30 - 7 PM on Jefferson St.
 For information about weekly market activities, visit Jefferson St Farmers Market
 on Facebook or call Downtown Partners.



My neighborhood. My bank.



[f tworivers.bank](http://tworivers.bank)



Making Connections, Building Community

Follow Us On



**SUPPORT
 LOCAL**



Farmers & Merchants Bank & Trust
fmbanktrust.bank

