

The

FEBRUARY 2020

GREATER BURLINGTON PARTNERSHIP NEWSLETTER VOL. 100 NO. 2

PARTNERSHIP





ROLLING OUT NEW WORKFORCE INITIATIVE

by Della Schmidt

As the Partnership continues to implement the Talent Pipeline strategies, the Workforce Advisory Council keeps in the forefront the objectives: to develop the area's future workforce by providing students and their families with a deeper understanding of career opportunities and aligning skills with current workforce needs; engaging employers directly with students, education and training providers; and better aligning programs and curriculum to the realities of the Southeast Iowa economy.

To assist in reaching these objectives, the Workforce Advisory Council is developing a new initiative called Asset Inventory Map (AIM). Working with area K-12 partners, Southeastern Community College and Iowa Wesleyan University, local non-profit organizations, State of Iowa resources, and area private sector employers, the advisory council will chronologize programs and resources that aid in youth focused career readiness and career exploration. When completed, the information contained within AIM will be an important workforce resource. AIM will be used to:

- Identify the most impactful or promising workforce initiatives with the goal of offering support in order to grow and sustain the work
- Limit or avoid duplication of efforts across organizations
- Identify gaps in programing and develop resources to fill those gaps
- Increase engagement of stakeholders
- Increase career readiness program engagement of students and their families

Interest in the AIM initiative has been very strong. Southeastern Community College has taken the concept a step further and has recently convened a team representing a multi-county area to work on creating a similar resource for the entire region. The Workforce Advisory Council work to assist SCC with developing this big picture resource tool.

If your business or organization has programs or resources geared to help students with career exploration or career readiness, please contact Della Schmidt. There are opportunities to include your information in the workforce Asset Inventory Map.



Belinda Colwell
Office Manager
319-208-0042
bcolwell@greaterburlington.com



Steve Frevert
Downtown Partners, Inc.
Exec. Dir. 319-208-0056
sfrevert@greaterburlington.com



Barb Gerst
Director of Finance
319-208-0044
bgerst@greaterburlington.com



Cindy Henry
Customer Relations Specialist
319-208-0052
chenry@greaterburlington.com



Jeremy Hess
Dir. of Economic Development
319-208-0050
jhess@greaterburlington.com



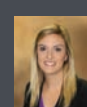
Chelsea Lerud
Convention & Visitors Bureau
Exec. Dir. 319-208-0045
clerud@greaterburlington.com



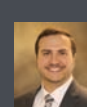
Brenda Levitt
Graphic Designer
319-208-0047
blevitt@greaterburlington.com



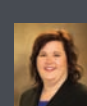
Rachel Lindeen
Event Coordinator
319-208-0046
rlindeen@greaterburlington.com



Emily Pattee
Welcome Center Manager &
Young Professionals
319-752-8731
epattee@greaterburlington.com



Dustin Roth
Marketing & Communications Dir.
319-208-0048
droth@greaterburlington.com



Kay Sackville Breuer
Vice President
319-208-0041
kbreuer@greaterburlington.com



Della Schmidt
President & CEO
319-208-0043
dschmidt@greaterburlington.com



This symbol represents a Partnering for the Future III Initiative.

SUBSCRIPTIONS: Price is \$24, which is included in annual events fees. Non-members: \$4 per issue. Periodicals postage paid at Burlington, Iowa.

POSTMASTER: The Partnership is published monthly by the Greater Burlington Partnership 610 North Fourth Street, Suite 200, Burlington, Iowa 52601.

POSTMASTER send address changes to Greater Burlington Partnership (USPS 001-692) 610 North Fourth Street, Suite 200, Burlington, Iowa 52601

ON THE COVER

Workforce Advisory Council

The Workforce Advisory Council guides the implementation of the Talent Pipeline initiatives.

The main objectives of the Workforce Advisory Council are to:

- Improve the ability to recruit a skilled and able workforce.
- Provide an avenue for area businesses and educational institutions to effectively work together to understand each other's needs and processes.
- Pursue heightened engagement from schools in the area, including the homeschool community.
- Assure tracking is in place to measure the impact of all projects.



Representatives of the forty-plus members of the Workforce Advisory Council, left to right: Sue Sorensen, F & M Bank & Trust; Michelle Brown, Southeastern Community College; Tiffanie Rourke-Thompson, Weigert's Handyman Service; Pat Coen, Burlington Community School District; Rhonda Weigert, Weigert's Handyman Service; Denise Johnson, Wingard Company; Stephanie Nagrocki, TEAM Staffing Solutions; David Keane, Burlington Community School District; Cory Johnson, Burlington Community School District

PARTNERING FOR THE FUTURE UPDATE

Whether it's Community Enhancement, Job Creation, Transforming the Talent Pipeline or any new opportunity, you can be certain the Greater Burlington Partnership will be ready, willing, and able to embrace it. Together opportunities can be maximized to assure that the Greater Burlington area is thriving in the years ahead. Time and hard work will be required from the many talented leaders, board members, volunteers and the Partnership staff, as well as financial investments.

Thank you to all who saw the need and the value in contributing to the Partnering for the Future campaign. Nearly \$1.7 million in committed

investments is being put to work in every corner of the community. Watch for important updates throughout the year on the initiatives the investors stated were a priority.

Look for the PFFIII Initiative emblem in the Partnership newsletter as it accompanies reports on key initiatives outlined in the five year plan of work.

Thank you again for investing in the future of Greater Burlington!



Congratulations to 2018 and 2019 Small Business of the Year Winners.

Seeking Small Business Nominations

Do you know a Des Moines County Small Business that goes above and beyond? Nominations are now being accepted for the 2020 Small Business of the Year.

Nominate at GreaterBurlington.com by March 28.

Greater Burlington Leadership Announces Group Project



Annually, participants of Greater Burlington Leadership are tasked with working as a group to provide a project that will improve the community and make an impact on others, while learning to work as a team, broaden their network, delegate, manage conflict and speak in public.

Members of the 2019 - 2020 Greater Burlington Leadership Class are excited to announce their group project! They hope to raise funds for an Immersive Training Simulator for Des Moines County Law Enforcement.

To raise funds, the class will host the Lip Sync Battle for the Badge. Stay tuned for more details on how you can participate. The main event will be held on Saturday, May 2, 7 PM at the Memorial Auditorium.

For more information, contact leadership@greaterburlington.com.

Downtown OPEN 4 BUSINESS COMPETITION

With Main Street Iowa and the Iowa Economic Development Authority, Downtown Partners is working to boost local business development efforts. The Open 4 Business competition is a chance for entrepreneurs to try out their business concepts for downtown Burlington. Each of the state's Main Street organizations can choose one business to represent their program. The business must be for-profit and located within the Main Street district. The deadline is April 2.

The Downtown Partners Business Development Committee will view video pitches from local applicants, with the winner chosen to compete for the semifinals in May for a chance at \$8,000. The five state finalists will go on to present their ideas at the Iowa Downtown Conference in July for up to an additional \$20,000 in funding.

To apply for the Open 4 Business competition, visit GreaterBurlington.com or contact Steve Frevert.





Presented by



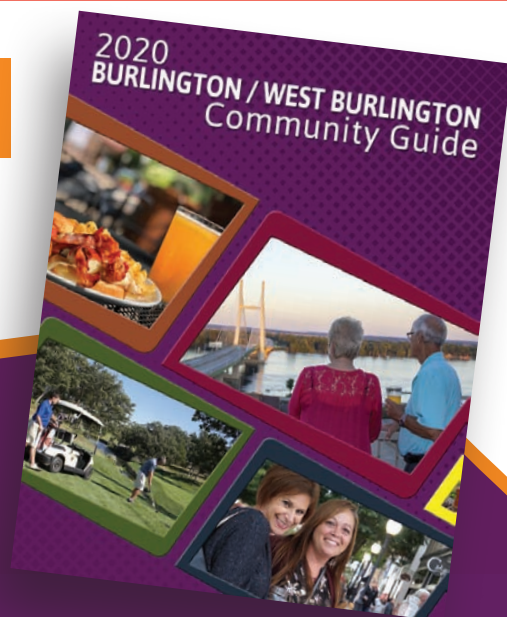
Chocoholic Frolic

February 8, 1 - 5 PM | Downtown Burlington

In the middle of winter, you deserve to indulge!
 Sample a rich variety of delectable treats from 11 tasting locations during the sixth annual Chocoholic Frolic.
 Advance tickets are \$10 per person through February 7 at Weird Harold's or GreaterBurlington.com. Tickets are \$12 the day of and during the event.

The 2020 Community Guide Now Available

Contact Emily Pattee or Chelsea Lerud to request a supply of the **FREE** 2020 Burlington/West Burlington Community Guides for your business.



View online at GreaterBurlington.com

KENNY'S ROLLER RANCH

Skating . Parties . Golf .
 Batting Cages . Basketball Bankshot



8989 Koestner Avenue
 Burlington, IA 52601

319-752-2043

KennysRollerRanch.com

STANDARD of Beaverdale

&
**BECKMAN
 TV & APPLIANCE**

Your One Stop to
 Building Your Dream!



319-754-5174
SOBACE.com



Menke & Company
 CERTIFIED PUBLIC ACCOUNTANTS

Integrity & Experience at Work for You



- ◆ Tax Planning & Preparation
- ◆ Accounting & Bookkeeping
- ◆ Full-Service Payroll
- ◆ Controllership Services
- ◆ Audit & Review
- ◆ Business Consulting

320 N. Third, Ste 300, Burlington, IA 52601
 319-753-2000 • Menkeco.com

MANY DESTINATIONS ONE AMAZING PLACE



PZZI 319-753-2946
THEPZZI.COM
 Gambling problem? Call 1-800-BETS-OFF

Lunch & Learn

Players Workshop

February 5, 12 PM

Players Workshop is one of the oldest community theater organizations in Iowa. Hear about the history, upcoming 2020 season and enjoy a tour of the theater!

RSVP through the YP Facebook event or
youngprofessionals@greaterburlington.com.

*Cancellations after January 29 result in meal charge.

(Have a friend sub in for your lunch spot if you can't attend, inform us at the event check in)

\$15 for non-members. First event is complementary for prospective members.

Sponsored by American Ordnance

Biz Tour

The Collective

February 18, 5:15 PM

Check out the brand new food hub and take part in a cooking demo by The Ivy Bake Shoppe's Martha Wolf. RSVP through the YP Facebook event or youngprofessionals@greaterburlington.com.

Current members - refer a friend to join Young Professionals, receive a **\$10 gift card!** They can apply at GreaterBurlington.com and make sure they enter your name in the referral spot to qualify.



YP SPOTLIGHT

Keely Kangas

Employer:

Boy Scouts of America – Mississippi Valley Council

Hometown: Waverly, IA

YP Member: 2 years

Why did you join YP? I was new to Southeast Iowa and wanted to connect with others my age. Finding a place to connect to others in a new community is really important.

Which community organizations/events do you volunteer for? I am a part of both the Burlington and Mount Pleasant Kiwanis Clubs and am looking forward to helping with their annual events like the Shamrock Shuffle and Pancake Breakfasts. I support PAW in Fort Madison and volunteered with RAGBRAI® last summer. I have also been a merit badge counselor with the Boy Scouts for eight years, teaching both Horsemanship and Indian Lore merit badges.

What do you enjoy most about Greater Burlington?

I really enjoy exploring the local parks and recreation areas. There are some awesome trails waiting to be hiked!

Unique about me: I have two dogs, three cats, and two horses - quite the little zoo! If you want to know more about them, I will happily chat your ear off for a minute or two.

Greater Burlington Young Professionals

A professional and social group for individuals between the ages of 21 - 40.

Thinking of joining YP?

Email youngprofessionals@greaterburlington.com for more information.

Eggs & Issues

February 15

\$5 Breakfast, Free Coffee and Legislative Insight

February's Topic - Workforce & Education

Breakfast served at 7:15 AM, Forum starts at 7:30 AM

RSVP to Belinda Colwell by February 12.

Sponsored by TriOak Foods



SOUTHEAST IOWA REGION

Travel to Des Moines February 12 and 13 representing the Southeast Iowa region to share legislative priorities and hear the latest happenings from the State of Iowa. Your voice is important! The participation fee is \$135 per person, covering the legislative luncheon, reception, and numerous Q&A sessions discussing Southeast Iowa key issues. Participants are responsible for their own travel and lodging.

To RSVP, contact Belinda Colwell.





The Magic and Wonders of STEM

Live and on stage – Grand Hank will be coming to the Burlington Memorial Auditorium February 11 - 12.

Featuring a high-energy, interactive performance designed to excite students about science and all things STEM.

The Greater Burlington Partnership and Burlington Community Public Schools have partnered together to host Grand Hank for his first appearance in Iowa. Over 1,000 BCSD students in grades 7 - 10 will be impacted by the Magic and Wonders of this STEM event.

Objectives:

- Increase student interest in STEM related classes; demonstrate impact through increased enrollment in elective courses
- Increase student interest in STEM career opportunities; demonstrate impact through increased participation in the STEMFest
- The target audience is 7th -10th grades, total 1,100 students
- Pilot project, first in Iowa – determine interest in a statewide tour

The Magic and Wonders of STEM has been made possible by Partnering for the Future III investors and the John H. Witte Jr. Foundation.

About Grand Hank:

A former research chemist for Johnson & Johnson, Tyraine Ragsdale, (aka Grand Hank) is the founder and president of Grand Hank Productions, Inc., a multimedia education company. Since founding in 1990, Grand Hank has had a profound impact on STEM education, reaching more than 10 million students, parents and teachers.



Southeast Iowa STEMFest

February 22, 10 AM – 1:30 PM at Southeastern Community College

The Greater Burlington Partnership, with the STEM Hub and regional partners, are partnering with local community leaders and educators to host an engaging festival to expose students to the fields of science, technology, engineering and mathematics (STEM).

Exhibitors from throughout the region will spark student and parent interest with hands-on learning activities ranging from robotics and healthcare simulations to magnetism and wind energy. This free, hands-on event is open to preK-12 children and their families.

5th and 8th Grade Career Fairs

March 16, 17 & 18 at Southeastern Community College



Engaging the future workforce! The Future Workforce Committee is again hosting the 5th and 8th Grade Career Fairs. It is a time to showcase your business while engaging students with hands on learning.

If your business is interested in participating in the Southeast Iowa STEMFest or the 5th and 8th Grade Career Fairs, please contact Rachel Lindeen.





As you consider the many worthy causes that depend upon donors, I'd like to make two suggestions: support one of the many endowment funds held by the Community Foundation of Des Moines County, or set up a permanent endowment fund in your name. There are several great reasons to give to a Community Foundation fund.

Did you Know . . .

- Contributions to a community foundation endowed fund are eligible for a 25% Endow Tax Credit as well as the IRS itemized deduction. This is a great way to leverage your contribution. Endow Iowa tax credits are granted on a first come basis. If not used in the current year, they can be carried over into the next.
- An endowment fund is a permanent fund that makes grants from the fund's earnings. It is a gift that keeps on giving year after year.
- There are over 20 charitable funds to which you can contribute within the Community Foundation, or you can use the Margaret Hansen Community Impact Fund that will provide annual resources to meet the most critical needs of the community.
- You can create your own directed charitable endowment fund to support a cause you care about. A fund can be started for any amount, but should reach the \$10,000 minimum balance within ten years. \$10,000 is the minimum level at which a fund can make grants.

Send contributions to Community Foundation of Des Moines County at 610 N 4th St, Suite 200, Burlington or go to CFDMC.org for more information. Please contact me, Dennis Wilson, at 319-753-6929 or denniswilson4@mchsi.com to learn more.

Dennis Wilson

Board Member CFDMC

CFDMC.org

Tired of Waiting on Unpaid Bills?
Let the professionals at the Financial Adjustment Bureau take care of your past due bills and bad checks.

Commercial • Professional • Retail
No Collection ~ No Charge

FINANCIAL ADJUSTMENT BUREAU INC.
612 Jefferson • Burlington, IA
319-753-6756

Energy For The Future
Big River Resources
Highway 34 & Beaverville Rd
West Burlington
Phone: 319-753-1100

BigRiverResources.com

ETHANOL

Proudly Made In The U.S.A.
**CLEANER BURNING FUEL
GOOD FOR YOU.
GOOD FOR THE ENVIRONMENT.**



BECKERS JEWELERS

For The Moments That Matter!



Your Full Service Jeweler!

401 S. Gear Ave. | W. Burlington, IA
BeckerDiamonds.com

Zaiser's
LANDSCAPING
FLORIST & GREENHOUSE
2400 SUNNYSIDE AVE • BURLINGTON, IA • 319-752-6871

ZaisersLandscaping.com



WELCOME NEW MEMBERS

Please welcome these new Chamber of Commerce members by sending an email, liking their Facebook page or visiting their website. Even better, stop by to introduce yourself, exchange business cards and help grow their network as well as your own!



RESTORE RX

Restore RX celebrates their Grand Opening at 606 Spring St, Burlington



CORKED 101

Corked 101 celebrates a Grand Opening in Downtown Burlington at 514 Jefferson

Queso's Mexican Bar & Grill

321 N Roosevelt Ave, Burlington

Yair Carvajal, Manager, burlington@quesos.us

Queso's ingredients are fresh and of high quality - from the corn tortillas handmade throughout the day to the freshly squeezed lime used in all of the margaritas. Queso's was created with the intention of being an honest restaurant.

Transitions DMC

515 S Main St, Burlington, 319-209-2217, transitionsdmc.org

Craig Fenton, President, transitionsdmc@outlook.com

Designed to fill a need for people in crisis facing homelessness and poverty related issues, Transitions is slated to house 16 - 32 people in the facility. The vision is to assist individuals with permanent housing, job training and life skills. "Providing a hand up, not a hand out."

2019 Annual Report A YEAR IN REVIEW



The Partnership's Annual Report is now available. Copies will be mailed out to main contacts in early February and were handed out at the Annual Dinner.

You can view the online version at GreaterBurlington.com or contact Belinda Colwell to get a copy.

FEBRUARY

CALENDAR OF EVENTS

1 - 28 – Gallery Show: Bekah Ash
Art Center of Burlington, hours vary
ArtCenterofBurlington.com

1 - 2 – Iowa State USBC Open Tournament
KingPins at FunCity
IowaBowl.com

5 – Young Professionals Lunch & Learn
Players Workshop, 12 PM
GreaterBurlington.com

8 - 9 – Iowa State USBC Open Tournament
KingPins at FunCity
IowaBowl.com

8 – Mississippi Valley Calling Classic
PZAZZ! Convention and Event Center, 8 AM
CallingClassic.com

8 – Chocoholic Frolic
Downtown Burlington, 1 PM
GreaterBurlington.com

8 – Red Skelton Tribute
The Legacy Theater, Carthage, IL, 2 PM
TheLegacyTheater.com

11 & 12 – Grand Hank
Burlington Memorial Auditorium
GreaterBurlington.com

12 & 13 – Southeast Iowa Days
Des Moines
GreaterBurlington.com

13 – Owl Prowl
Starr's Cave Nature Center, 7 - 8 PM
DMCCConservation.com

14 – PZAZZ! Big Band Series
PZAZZ! Convention & Event Center
ThePzazz.com

15 – Eggs & Issues
Greater Burlington Partnership, 7:30 AM
GreaterBurlington.com

15 - 16 – Iowa State USBC Open
Tournament
KingPins at FunCity
IowaBowl.com

15 - 16 – Turf Wars
FunCity Turf
SesaSoccer.com

15 – Russian National Ballet presents
Sleeping Beauty
Burlington Memorial Auditorium, 7:30 PM
BurlCivicMusic.com

18 – Young Professionals Biz Tour
The Collective, 5:15 PM
GreaterBurlington.com

19 – Burlington Lunchtime Chamber Music
First United Methodist Church,
12:15 – 12:45 PM
facebook.com/
BurlingtonLunchtimeChamberMusicSeries

21 - 23 – *The Radiant*
Players Workshop Theater
Thurs - Sat 7:30 PM; Sun 2 PM
PlayersWorkshopTheater.com

22 – Southeast Iowa STEM Festival
Southeastern Community College, 10 AM
GreaterBurlington.com

22 - 23 – Iowa State USBC Open
Tournament
KingPins at FunCity
IowaBowl.com

22 - 23 – Home Show
PZAZZ! Convention & Event Center
Sat 10 AM - 4 PM; Sun 11 AM - 3 PM
KBUR.com

27 – Owl Prowl
Starr's Cave Nature Center, 7 - 8 PM
DMCCConservation.com

27 - 29 – *The Radiant*
Players Workshop Theater
Thurs - Sat 7:30 PM; Sun 2 PM
PlayersWorkshopTheater.com

28 – Todd Oliver Ventriloquist & Comedian
The Legacy Theater, Carthage, IL, 7 PM
TheLegacyTheater.com

29 – Iowa State USBC Open Tournament
KingPins at FunCity
Iowabowl.com

SAVE the DATE

MARCH

9 – Young Professional Lunch & Learn
Art Center of Burlington
12 PM

16 - 18 – 5th & 8th Grade Career Fair
Southeastern Community College

21 – Eggs & Issues
Greater Burlington Partnership
7:30 AM

26 – Young Professional Biz Tour
Corked 101
5:15 PM

APRIL

16 – Business After Hours
Art Gallery Southeastern
Community College
5 - 7 PM

18 – Eggs & Issues
Greater Burlington Partnership
7:30 AM

24 – Sip, Taste & Stroll
Downtown Burlington
5 PM



Area Recyclers

HazChem Center | Area Recyclers

DMC Landfill | Recycled 2 You Store | Electronic Waste

319-753-8126 • www.DMCWaste.org

Like and Follow AREA RECYCLERS on Facebook!

Des Moines County Regional Solid Waste Commission
1818 West Burlington Ave, Burlington, IA 52601



MACK NEW & USED TRUCKS
732 Wapello St. Mediapolis
319-394-9143  SINCE 1956
www.himack.com



- Motorola Two-Way Radios
- Security Cameras/ CCTV
- Alarm & Monitoring Systems
- Public Address Systems

We Provide

- Technical service, maintenance, and support
- Software and support agreements
- Site survey & Elevations
- System Design
- Turnkey Installation



126 N Main St Mt Pleasant • 319-385-7650
www.engineering.com

MAKING A DIFFERENCE

Thank you to the members below for renewing their membership and providing the resources to accomplish the ongoing goals of the Chamber of Commerce. Those listed in bold have made an additional commitment by making a voluntary contribution.

EARLY BIRD SHOUT OUT!

Thanks to the first members to return their 2020 Chamber of Commerce membership investment!

101.7 The Bull KBKB-FM and The New Mix 107.3 KGRS
Per Mar Security Services
Quality Inn

101.7 The Bull KBKB-FM and The New Mix 107.3 KGRS

3E Electrical Engineering and Equipment Co.

5 Star Community Credit Union

A Street Cat With No Desire

Acuity Financial

AD Specialties Unlimited

Allgood Animal Hospital

Ameriprise Financial

Aspelmeier, Fisch, Power, Engberg & Helling, P.L.C.

Beckman Law Offices, P.L.C.

Bel Canto Chorale

Brent Slocum Foundation

Brown's Shoe Fit

Bruner, Cooper & Zuck, Inc.

Burke Cleaners

Burlington Bees Baseball Association

Burlington By the Book

Burlington Noon Lions Club

Burlington Notre Dame

Casebine Community Credit Union

Casey's General Store #3587

Casey's General Store #2019

Casey's General Store #2346

Casey's General Store # 2342

C-CAT, Inc.

Childrens' Dental Center of SE IA

Burlington Civic Music Association, Inc.

Connection Bank

Connection Insurance

Craftsman Press, Inc.

Designer's Viewpoint

Drake Hardware & Software

Eastern Iowa Tire

Edward Jones - Joel Sieren

Friends of Community Field, NPC

George's Lawn Mower, Inc.

Graystone Construction, Inc.

Grinstead & Associates

Hope Haven Area Development Center Corp.

Huffman's Farm & Home

Indiana, Illinois, Iowa Foundation for Fair Contracting

Iowa State University Extension and Outreach, Des Moines County

J.D. Byrider/CNAC

Kevin Moore Professional Carpentry

Keystone Products

KimAnne Photography

Lips To Go

McMurray, David

The Medium Art Store

Menke & Company

Milestones Area Agency on Aging

Miracle Car Wash

MTC Technologies

Paddlewheel Lounge, Inc.

Per Mar Security Services

Pilot Grove Savings Bank

Players Workshop

Ploeger Recruiting Services

Dr. Mark C. Pothitakis D.D.S.

ProLine Striping

Quality Inn

Reif Oil Company

Salvation Army Corps

Sanders, Steve & Diane

Seither and Cherry Company

Servpro of Burlington

S.G. Construction

Southeast Iowa Builders Association

Standard of Beaverdale

Sterzing Food Company

Summer Street Animal Clinic

TK Industries

United Rentals

Weigert's Handyman Service

Weird Harold's

Welch's Insurance Agency, Inc.

Wilson Rentals

Window World of Davenport, Inc.

Young House Family Services, Inc

Those listed are renewals received through 12/31/2019.

**FIRE AND WATER
CLEAN UP & RESTORATION**
24 HOUR EMERGENCY SERVICE



COMMERCIAL OR RESIDENTIAL
COMPLETE MOVE-OUTS
MOLD MITIGATION & REMEDIATION
TRAINED, UNIFORMED PROFESSIONALS

**SERVPRO®
OF BURLINGTON**

319-754-8050 OR 877-754-8050
WWW.SERVPROBURLINGTON.COM

**MANY DESTINATIONS
ONE AMAZING PLACE**



P Z A Z Z | 319-763-2946 THEPZAZZ.COM

**Port of Burlington
Welcome Center**



BROCHURES • GIFTS • INFORMATION • SOUVENIRS

400 N Front St, Burlington | 319-752-8731 | OPEN DAILY 10 AM - 4 PM

Raleigh Annis, Randy Harris presented awards at Carl A. Nelson & Company



Receiving the Bob Harris Field Leadership Award in recognition of leadership in the field by an hourly employee was Raleigh Annis, who was promoted in 2019 to the position of field foreman.



Receiving the Salaried Employee of the Year Award was Superintendent Randy Harris. A shareholder in Carl A. Nelson & Company, Harris observed his 40th anniversary with CANCO in 2019.

Civic Music - Russian National Ballet Presents *Sleeping Beauty*

The Bolshoi-trained dancers of the Russian National Ballet return to grace the stage at Burlington Memorial Auditorium in Petipa's magical ballet, *The Sleeping Beauty*. The show begins at 7:30 PM on February 15.

For more information or to purchase tickets, visit BurlCivicMusic.com.

Golden Dragon Acrobats at Iowa Wesleyan University - February 28, 7 PM

The Golden Dragon Acrobats are a family performing arts company based in Frisco, Texas. Founded in 1985, their mission is to promote the art and beauty of Chinese acrobatics, bridging cultures and traditions through the amazing skills and talents of their professional artists.

This performance is free and open to the public; limited seating available. For more information, visit IW.edu.

Weathers & Red Skelton Tribute in February at the Legacy Theater

The weather outside might be frightful, but West Coast alt rock sensation Weathers will turn up the heat in the Legacy Theater February 7 from 7 - 9 PM.

Honoring one of the great comedians with family-friendly humor, Red Skelton on February 8 from 2 - 4 PM. Brian Hoffman's *Remembering Red - A Tribute to Red Skelton*, the longest running show at the Westin Las Vegas Hotel Casino and Spa in Las Vegas, is now performing at the Legacy Theater in Carthage, IL. This comedy show is a hilarious blast from the past and fun for all ages.

For more information or to purchase tickets, visit TheLegacyTheater.com.

Save the Date for the Shamrock Shuffle

Burlington Kiwanis is excited to announce the return of the Shamrock Shuffle. The 5K run/walk will take place on Saturday, March 14 at 10 AM in Crapo Park. Again this year, the Shamrock Shuffle will be a color run, and participants will enjoy the festive course as they run through bursts of color.

All proceeds from the event will be used for needs of children and children's programs. If you would like to help support the Shamrock Shuffle through sponsorships, please contact Dominique Cornick at 319-316-2853 or dominique@ljroth.com.

For more information, visit BurlingtonKiwanis.com, Like "Burlington Shamrock Shuffle" on Facebook or email burlingtonshamrockshuffle@gmail.com.

To submit member information, contact Brenda Levitt

Air Choice One

SOUTHEAST IOWA REGIONAL AIRPORT

DAILY FLIGHTS
Chicago, Minneapolis St. Paul,
Mason City, and St. Louis
AIRCHOICEONE.COM / 1-866-435-9847

SG General Contractor

CONSTRUCTION

- Design
- Engineering
- Construction

2204 West Mt. Pleasant Street
West Burlington, IA 52655
319-752-7154
ron@sgconstructco.com
www.sgconstructco.com

RIDDLE'S JEWELRY

Westland Mall
550 South Gear Avenue
W. Burlington, IA

Check us out online: RiddlesJewelry.com

CONNECTIONS

by Kay Weiss

C. W. Bond, the first secretary of the Greater Burlington Association (later the Chamber of Commerce), reported in 1926 on the GBA's work with the various committees and members to improve the roads leading into Burlington in order to extend Burlington's business interests. Special attention was paid to the road from Burlington east into Illinois. Dubbed the Harding Highway, the members believed that making Route 34 "passable year round" would make it possible for Burlington to "enjoy heavy tourism patronage." Between 1923 and 1930, the Chamber of Commerce invested \$12,000 "in Illinois roads leading to the bridge, not including the work which the Chamber of Commerce did in helping organize the Harding Highway and the raising of \$15,000 for advertising, marketing, and promoting the campaign to pave the road across Iowa." In 1930, the good roads committee was part of a group that planned a celebration for the completion of Federal Highway 34. Work on getting Highway 61 designated as a Federal highway also involved "much correspondence, conferences and work with state and national officials."

The legislative committee worked closely with the roads committee regarding all road legislation, local, state, and national. In 1926, the GBA/Chamber Streets and Alleys Committee, working with city officials, was pleased to report that all the main roads in Burlington were paved to the city limits and that "an adequate system of street marking was

being installed." In 1927, the Chamber's program of work included a "plank" devoted to roads in Des Moines County, Iowa, and Illinois, with special mention made of the need for road markers and road signs.

Members of the Waterways Committee met annually with representatives of the other states that border on the Mississippi to discuss their mutual concerns. In 1931, they all agreed to work together for the establishment of a 9-foot channel.

The Chamber of Commerce also sponsored an aviation committee that actively sought organized airport management as early as April 1930. In June of that same year, the committee arranged for a visit from the Iowa Air Tour. This group (which visited a number of communities around the state) featured "a girl pilot," a wing walker, Georgie Porgie (a representative of the Georgie Porgie Company of Council Bluffs), and a display of sixty air machines. Special buses were arranged to take local citizens to the airport because there was to be no parking on the airfield due to the presence of so many planes.

Whether it has been support for the regional airport or the formation of the present Highway 34 and Highway 61 coalitions, throughout its history the Chamber of Commerce and its various committees and bureaus have worked to support good transportation options for our area.



RiverPark Place
610 N 4th St, Ste 200
Burlington, Iowa 52601
TELEPHONE 319-752-6365
FAX 319-752-6454
info@greaterburlington.com
GreaterBurlington.com

The 2020 Visitor Coupons can now be found inside the Burlington/West Burlington Area Community Guide!



The coupon page can also be found at GreaterBurlington.com, the Port of Burlington Welcome Center or the Greater Burlington Partnership offices.

Grab the coupon page, then head out for some shopping fun.



TWO RIVERS
BANKING • INVESTMENTS • INSURANCE

My neighborhood. My bank.



[tworivers.bank](https://www.tworivers.bank)

Maid to Serve
COMMERCIAL & RESIDENTIAL

We don't cut corners,
we clean them!



319.759.5728

MaidtoServeIowaandIllinois.com
18586 160th St, Danville, IA 52623

February
Business of the Month



F&M BANK & TRUST
Farmers & Merchants Bank & Trust
fmbanktrust.bank

Member FDIC