

# The **P**ARTNERSHIP

JANUARY 2020

GREATER BURLINGTON PARTNERSHIP NEWSLETTER VOL. 100 NO. 1





## 100 YEARS . . . AND COUNTING

by Kay Sackville Breuer

In April of 1920, area business leaders were similar to business leaders of today. They had vision for the community to be a vibrant hub of retail, service, industry, education, healthcare, entertainment, and culture. They were dedicated to making the community a wonderful place to raise their families. They were confident in success and had the courage to move forward with new ventures.

These business leaders were excited for change and the prospect of something new. These officers joined forces with the Board of Directors and developed the Greater Burlington Association, which was a reorganization of the Commercial Exchange.

The Greater Burlington Association was later renamed the Burlington Chamber of Commerce in 1930, and in 1983 it merged with the West Burlington Chamber of Commerce to create the Burlington/West Burlington Chamber of Commerce. Today, we recognize the organization as the Greater Burlington Partnership and enjoy a vision celebrated by partners in Economic Development, Convention and Visitors Bureau and Downtown Partners. The current leaders continue to have a vision for success, creating a quality of life that we can all enjoy.

In 2020, the Greater Burlington Partnership is excited to celebrate the past 100 years with a number of special activities. It's an exhilarating time! The Board of Directors gave you a sneak peak into the fun with an old time photo that was featured on the November newsletter.

The festivities will kick off with flapper dresses, speakeasies and gangsters as we go back in time to the Roaring Twenties at the Annual Dinner in January. It's sure to be the cat's pajamas. A special video on our history will be featured that night as well. The celebration won't stop there; events will be held over the summer, a look back at the history of the Chamber of Commerce will be featured each month in *The Partnership* newsletter, and visits to members and a ribbon cutting to commemorate the special day are all in the works. As they may have said in the 1920s, "This year will be the bee's knees!" I hope you celebrate with us.

The 100th Anniversary of the Chamber of Commerce is going to be an exciting year, but I believe every year is exciting. For the past 20 years I have been able to be a part of those exciting times, and it's been a thrilling ride. I love hearing stories from members who had their "best year ever," a Young Professional who met new friends or a Greater Burlington Leadership Alumni who is now chair of a local board. The Chamber of Commerce is a business organization, but it's the people who make the difference, continuing the vision and spirit of the leaders from 1920.



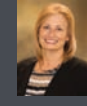
**Belinda Colwell**  
Office Manager  
319-208-0042  
[bcolwell@greaterburlington.com](mailto:bcolwell@greaterburlington.com)



**Steve Frevert**  
Downtown Partners, Inc.  
Exec. Dir. 319-208-0056  
[sfrevert@greaterburlington.com](mailto:sfrevert@greaterburlington.com)



**Barb Gerst**  
Director of Finance  
319-208-0044  
[bgerst@greaterburlington.com](mailto:bgerst@greaterburlington.com)



**Cindy Henry**  
Customer Relations Specialist  
319-208-0052  
[chenry@greaterburlington.com](mailto:chenry@greaterburlington.com)



**Jeremy Hess**  
Dir. of Economic Development  
319-208-0050  
[jhess@greaterburlington.com](mailto:jhess@greaterburlington.com)



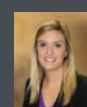
**Chelsea Lerud**  
Convention & Visitors Bureau  
Exec. Dir. 319-208-0045  
[clerud@greaterburlington.com](mailto:clerud@greaterburlington.com)



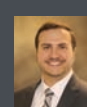
**Brenda Levitt**  
Graphic Designer  
319-208-0047  
[blevitt@greaterburlington.com](mailto:blevitt@greaterburlington.com)



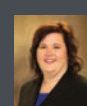
**Rachel Lindeen**  
Event Coordinator  
319-208-0046  
[rlindeen@greaterburlington.com](mailto:rlindeen@greaterburlington.com)



**Emily Pattee**  
Welcome Center Manager &  
Young Professionals  
319-752-8731  
[epattee@greaterburlington.com](mailto:epattee@greaterburlington.com)



**Dustin Roth**  
Marketing & Communications Dir.  
319-208-0048  
[droth@greaterburlington.com](mailto:droth@greaterburlington.com)



**Kay Sackville Breuer**  
Vice President  
319-208-0041  
[kbreuer@greaterburlington.com](mailto:kbreuer@greaterburlington.com)



**Della Schmidt**  
President & CEO  
319-208-0043  
[dschmidt@greaterburlington.com](mailto:dschmidt@greaterburlington.com)



This symbol represents a Partnering for the Future III Initiative.

**SUBSCRIPTIONS:** Price is \$24, which is included in annual events fees. Non-members: \$4 per issue. Periodicals postage paid at Burlington, Iowa.

**POSTMASTER:** The Partnership is published monthly by the Greater Burlington Partnership 610 North Fourth Street, Suite 200, Burlington, Iowa 52601. POSTMASTER send address changes to Greater Burlington Partnership (USPS 001-692) 610 North Fourth Street, Suite 200, Burlington, Iowa 52601

# ON THE COVER

## 2020 Board Chairs

Each year the Board of Directors is tasked with setting the policies and goals of the Greater Burlington Partnership. The organization is unique in structure and includes the Chamber of Commerce, Economic Development, Convention & Visitors Bureau and Downtown Partners, Inc. all under the collective umbrella of Greater Burlington Partnership. For this community, the collaboration has proven to be an effective and great strategy.

To accomplish this task, each division has a separate board of directors, segregated funds and a unique mission statement guiding their way.

The chairs of each board of directors are on this month's cover.

In 2020, the chairs of the divisions are (from left to right):

- **Dr. Michael Ash, Southeastern Community College**  
Economic Development Board Chair
- **Wood L. Stortzum, U.S. Bank, N.A.**  
Chamber of Commerce Board Chair
- **Becky Anderson, Legacy Partners**  
Downtown Partners, Inc. Board Chair
- **Chris Lee, Des Moines County Conservation**  
Convention & Visitors Bureau Steering Committee Chair



The chairs of the organization do much more than preside over monthly board meetings. During their one year term, they represent the organization at a variety of functions and collectively meet to ensure the organization is running efficiently and effectively.

When you have an opportunity, please thank these individuals for their time and dedication to the organization and the community.

# ANNUAL DINNER 2020

The Burlington/West Burlington Area Chamber of Commerce Celebrates 100 Years!

It's a busy time of year, and it's no different for the Greater Burlington Partnership! Ringing in the new year, it's time to celebrate the accomplishments of 2019 and look forward to the possibilities of 2020. With more details than one can count, the Annual Dinner committee works feverishly for months prior to the big night. "It's so exciting to see the big event come together," said Kay Sackville Breuer, Vice President. "The committee works on the theme, decorations, award selection, program development, photos, and videos and puts together the wonderful silent auction."

If you would like to attend the Annual Dinner, reserved tables of eight are available for \$850, or individual tickets are \$100. 1920s Attire Requested.

**RSVP to Kay Sackville Breuer. No refunds or cancellations after January 15.**



## Chocoholic Frolic

February 8, 1 - 5 PM | Downtown Burlington

In the middle of winter, you deserve to indulge! Sample a rich variety of chocolates during the 5th Annual Chocoholic Frolic.

Presented by



**Access Energy Cooperative**  
A Touchstone Energy Cooperative

*Happy New Year*

Call us 24/7 at  
1-866-242-4232

[www.accessenergycoop.com](http://www.accessenergycoop.com)

**NEW 2020 GUIDES**

**COMMUNITY GUIDES GET THEM FREE**  
Call us 319-752-6365

**Greater BURLINGTON Partnership**

**Great River HEALTH**

**Your health counts.**

[greatriverhealth.org](http://greatriverhealth.org)

**MYERS CONSTRUCTION**  
GENERAL CONTRACTOR  
SINCE 1976

Building the Project of Your Dreams  
On Time, On Budget and Above Expectations

Residential and Commercial

Open Monday - Friday, 8 AM - 5 PM, 319-985-2170  
[www.myersconstructioninc.net](http://www.myersconstructioninc.net)

# Downtown Kegs & Conversation

Maybe it should be "Casks & Conversation" this month? All downtown business owners, property owners, employees, and residents are invited to this free casual info and networking event. On January 29 at 5:15 PM, we'll be at the newly opened Corked 101 wine bar at 514 Jefferson to talk about downtown snow removal, and you'll have a chance to share news about your downtown business as well. Kegs & Conversation is organized by the DPI Business Development Committee.

For more information, contact Steve Frevert.

Presented by **The Hawk Eye**  
PRINT • DIGITAL • MOBILE  
ESTABLISHED 1837

*Plan to Join us!*  
**EGGS & ISSUES**

**MARK YOUR CALENDARS:  
February 15, March 21, April 18**

**JANUARY 18**

Start your Saturday by hearing insights and important issues from your legislators. Breakfast is \$5 and available at 7:15 AM, Forum begins at 7:30 AM

Eggs & Issues is a benefit of membership, and all members are encouraged to attend. RSVP to Belinda Colwell by January 16.

**Thank you to our presenting sponsor: U.S. Bank, N.A.**



## **BUSINESS AFTER HOURS**

**Bickford Assisted Living and Memory Care**

3301 Sterling Dr, Burlington | January 23, 5 - 7 PM

Join us with your co-workers to build your network at Business After Hours and grow your business!

**JOIN US AFTER WORK**



## Southeast Iowa STEMfest

February 22, 10 AM – 1:30 PM at Southeastern Community College

The Southeast, IA Regional Hub is partnering with local community leaders, businesses and educators to host an engaging festival to expose students to the fields of science, technology, engineering and mathematics (STEM). Exhibitors from throughout the region will spark student and parent interest with hands-on learning activities ranging from robotics and healthcare simulations to magnetism and wind energy.

If your business is interested in participating, please contact Rachel Lindeen.

## 5th and 8th Grade Career Fairs

March 16, 17 & 18 at Southeastern Community College

The Future Workforce career fairs are excellent opportunities to showcase your business and the careers available to your future workers. The purpose of these events is to inform and educate students early on regarding locally available careers. Over 1,000 students attend each year.

Presented by



**KENNY'S ROLLER RANCH**  
 Skating . Parties . Golf .  
 Batting Cages . Basketball Bankshot

8989 Koestner Avenue  
 Burlington, IA 52601

**319-752-2043**  
 KennysRollerRanch.com

**STANDARD**  
 of Beaverdale  
 &  
**BECKMAN**  
 TV & APPLIANCE

*Your One Stop to  
 Building Your Dream!*

**ACE Hardware**  
 The helpful place carhartt

**RED WING SHOES**

319-754-5174  
**SOBACE.com**

**Menke & Company**  
 CERTIFIED PUBLIC ACCOUNTANTS

*Integrity & Experience at Work for You*

- ◆ Tax Planning & Preparation
- ◆ Accounting & Bookkeeping
- ◆ Full-Service Payroll
- ◆ Controllership Services
- ◆ Audit & Review
- ◆ Business Consulting

320 N. Third, Ste 300, Burlington, IA 52601  
 319-753-2000 • Menkeco.com

**MANY DESTINATIONS**  
**ONE AMAZING PLACE**

**P Z A Z Z I**  
 319-753-2946  
 THEPZAZZ.COM

319-753-2946  
 THEPZAZZ.COM

Gambling problem? Call 1-800-BETS-OFF

**Capital City CASINO**

## New Workforce Advisory Council in Full Swing

Nearly 40 business, education and community leaders have come together under the newly formed Workforce Advisory Council. This team of people will advise the Greater Burlington Partnership in the implementation of Transforming the Talent Pipeline. The purpose of the work will be to develop our area's future workforce by providing students and their families with a deeper understanding of career opportunities and aligning skills with current workforce needs; engaging employers directly with students, education and training providers; and better aligning programs and curriculum to the realities of the SE Iowa economy.

*For more information, contact Della Schmidt*

## Workforce AIM Project Underway

The Workforce Advisory Council has named the Asset Inventory Map, (AIM), project as a top priority for the 1st quarter of 2020. The AIM project will be available both in print and on the GBP website. This important tool will help education partners, business leaders and students and their families by increasing knowledge and use of career planning programs and resources in Des Moines County.

### Asset Inventory Map (AIM) Objectives:

- Identify most impactful/promising initiatives with the goal of offering support in order to grow and sustain the work
- To aid in limiting or avoiding duplication of efforts
- Identify gaps for the purpose of aiding in developing initiatives to fill those gaps
- Increase engagement of stakeholders
- Increase career readiness program awareness and engagement of students and their families



## CEO in the Classroom Pilot Program

The Greater Burlington Partnership is launching a new pilot program that will bring business owners and professionals into 8th grade classrooms, discussing life after high school as well as living expenses and careers in Des Moines County. CEO in the Classroom paints a picture of the financial benefits for students when they choose in-demand careers and education pathways that lead to great paying local jobs in our low cost of living communities. The program helps draw a contrast to student loan debt associated with empty degrees with no real career opportunities.

Educators, students and local business leaders are providing feedback as part of the pilot project. If well received, CEO in the Classroom will be expanded to additional 8th grade classrooms throughout the region.



## Workforce Intern - Cassi Hasek

Cassi Hasek is the new Intern at Greater Burlington Partnership. She will primarily work on the Workforce Asset Inventory Map project, AIM, and will also help with other workforce related projects on an as needed basis. Cassi grew up on her family's farm in Donnellson, IA. She enjoys camping, hunting, traveling, and spending quality time with her family. She is currently enrolled at Southeastern Community College working towards her Associates degree in Administrative Assistant and will graduate in May.

# SOUTHEAST IOWA REGION

## Southeast Iowa Days – Des Moines

Join us as we travel to Des Moines February 12 and 13 representing the Southeast Iowa region to share our legislative priorities and hear the latest happenings from the State of Iowa.

The participation fee is \$135 per person, covering the legislative luncheon, reception and breakfast with legislative leadership, plus numerous Q&A sessions highlighting Southeast Iowa's key issues. Participants are responsible for their own travel and can make lodging arrangements by calling Embassy Suites at 515-244-1700 and mentioning "Southeast Iowa Days." A block of rooms is reserved until January 13.

*For more information and to RSVP,  
contact Belinda Colwell.*



# WELCOME NEW MEMBERS

Please welcome these new Chamber of Commerce members by sending an email, liking their Facebook page or visiting their website. Even better, stop by to introduce yourself, exchange business cards and help grow their network as well as your own!

### Holstein's Variety Store

550 S Gear Ave Ste 41, West Burlington, 319-752-4264

Susie Holstein, Owner, [holsteinsvarietystore@gmail.com](mailto:holsteinsvarietystore@gmail.com)

Offering something for everyone, from pocket knives, swords and air soft guns to pet supplies, toys, candles, watches, jewelry and blankets. New merchandise arrives regularly for customers to enjoy.

### Riverfest

1731 39th St, Fort Madison, 319-669-0039, [riverfestfm.com](http://riverfestfm.com)

Charles Craft, Executive Director, [charles@riverfestfm.com](mailto:charles@riverfestfm.com)

Iowa's largest Four-day rock festival with something for everyone! Enjoy the laid back atmosphere, beautiful Mississippi River views and a stellar lineup of national rock acts.

### Barking Dog Promotions

Burlington, 319-217-0143, [bankersadvertising.com](http://bankersadvertising.com)

Lori Alberts, President, [barkingdogpromotions@gmail.com](mailto:barkingdogpromotions@gmail.com)

Barking Dog Promotions specializes in printing signage, banners, calendars, apparel (screen and embroidery), awards, and all of your promotional merchandise needs. They are your source for all your promo ware and promo wear.

# MEET THE NEW LEADERSHIP

## Chamber of Commerce

*Wood Stortzum, U.S. Bank, N.A.*



**Goal:** To support and encourage our team and investors to attain GBP's mission by: a. being a catalyst for economic growth and community development; b. assisting in collaborating efforts with our stakeholders for business retention, expansion and recruitment; c. adding and retaining jobs, enhance our tax base, attract private capital investment to our communities and continuously improve the business climate throughout Des Moines County; d. attracting visitors to Des Moines County and offering them information on a wide variety of attractions, entertainment, shopping, restaurants and other amenities in our retail districts.

**Why:** It is humbling to be a part of such a dynamic organization staffed by professionals working tirelessly with dedicated volunteers for the growth and prosperity of Des Moines County. My personal goal is to add our combined knowledge and perception to reflect the issues and goals we face today and ultimately leave the organization ready for the next 100 years.

## Economic Development

*Dr. Michael Ash, Southeastern Community College*



**Goal:** To strengthen efforts to improve the workforce development opportunities. Working with Southeastern Community College and many others, we would be able to recruit and train the kind of workers we need. We will work with the Economic Development staff across our region to improve the connection for improved services, drawing in even more additional businesses and good paying jobs.

**Why:** Working together and supporting one another will bring better results by training our local workforce and also drawing more good paying jobs to southeast Iowa. In this day and age, we need to work more closely together rather than seeing one another as competitors.

## Convention & Visitors Bureau

*Chris Lee, Des Moines County Conservation*



**Goal:** My goals for the year focus on two interrelated things: Operational efficiency and how to make the best of pending opportunities such as Gus Macker, the Welcome Center, and the Viking River Cruises.

**Why:** I chose to volunteer for this role because I see the value in attracting people to our community and the CVB is on the front lines in doing so. My hope is that, as a leader, I can help raise the questions we need to ask to help the organization further improve upon what it already does so well.

## Downtown Partners, Inc.

*Becky Anderson, Legacy Partners*



**Goal:** My goal for 2020 is that DPI be seen as a true champion of our downtown businesses and property owners. The downtown is evolving into this wonderful community of restaurants, unique shops, bars, businesses and housing that is the envy of all other communities.

**Why:** I have been a long time investor and business owner in our downtown. My long term vision for the downtown has always been that Downtown become a "Destination." I have been involved in creating businesses, housing, and jobs in the downtown, but it has always been because I believed that we are on the road to becoming a destination for tourists, shopping, entertainment, dining, as well as a great place to live.

# 100+ LIKE MINDS

I came across the South African word "Ubuntu" recently and was very taken by its meaning. It is a universal truth, a way of life, respect, helping, sharing, caring, trust, unselfishness, humanity, fellow feelings of kindness. Ubuntu asks, "Are you going to do something for the community around you to improve the way of life for all?"

This is exactly what I've seen in our community. The spirit of Ubuntu is demonstrated in many ways. One of them is through the efforts of 100+ Like Minds. This is a group of 100+ women who have committed to give \$100 a year to invest in the Community Foundation of Des Moines County's Margaret Hansen Community Impact Fund. So far 100+ Like Minds has raised \$30,375 to grow this fund, which is used to improve our community and the quality of life for all of us.

Women instinctively understand the spirit of Ubuntu. We realize we need each other for support, encouragement, resources, strength, and ideas. We are stronger and more effective when we lean a little on one another, ask for advice, or share a task. We like to "do life" together. When we choose to do things together, we really do accomplish great things.

Thank you to all of you who give selflessly, respect our community, and share your resources. Without you, Burlington would not be what it is today and would not have the hope of what it can be tomorrow.

*Tammy McCoy*



**Tired of Waiting on Unpaid Bills?**  
Let the professionals at the Financial Adjustment Bureau take care of your past due bills and bad checks.

Commercial • Professional • Retail  
**No Collection ~ No Charge**

**FINANCIAL ADJUSTMENT BUREAU INC.**  
612 Jefferson • Burlington, IA  
**319-753-6756**

**Energy For The Future**  
**Big River Resources**  
Highway 34 & Beaverdale Rd  
West Burlington  
Phone: 319-753-1100

**BigRiverResources.com**

**ETHANOL**

*Proudly Made In The U.S.A.*  
**CLEANER BURNING FUEL  
GOOD FOR YOU.  
GOOD FOR THE ENVIRONMENT.**

**BECKERS JEWELERS**

For The Moments That Matter!

Your Full Service Jeweler!

401 S. Gear Ave. | W. Burlington, IA  
BeckerDiamonds.com

**Zaiser's**  
LANDSCAPING  
FLORIST & GREENHOUSE  
2400 SUNNYSIDE AVE • BURLINGTON, IA • 319-752-6871

ZaisersLandscaping.com

## *Cascade Bridge Study Lunch & Learn*

### **Greater Burlington Partnership**

**January 7, 12 PM**

Impact7G will present on the City's effort to make an informed decision on the future of Cascade Bridge. Mike Fisher from Impact7G will discuss the history of the bridge, historic estimates on rehabilitation of the structure, alternative decisions the City must make with respect to the future crossing on S Main St, and possible sources of funding for future work on the crossing. Mr. Fisher will also discuss some of the input received thus far from engaged citizens.

**RVSP required for lunch through the YP Facebook event or [youngprofessionals@greaterburlington.com](mailto:youngprofessionals@greaterburlington.com).**

**\*Cancellations after December 31 result in meal charge.**

**\$15 for non-members to attend. First event is complementary for prospective members.**

**Sponsored by Impact7G, Inc.**

## *Biz Tour*

### **Flint River Indoor Shooting Range**

**January 22, 5:30 PM**

Young Professional members, this is your chance to check out the newly built indoor shooting range! 15 lanes, each 25 yards long.

#### **Thinking of joining YP?**

Email [youngprofessionals@greaterburlington.com](mailto:youngprofessionals@greaterburlington.com) for more information.



## **YP SPOTLIGHT** **Margo Noble**

**Employer:** U.S. Bank  
**Hometown:** Burlington  
**YP Member:** 1 Year

**Why did you join YP?** I wanted to find more opportunities to be involved in the community.

**Which community organizations/events do you volunteer for?** I'm on the Junior Achievement and United Way committees at U.S. Bank, I serve meals at Great River Hospice, I volunteer at my son's elementary school, and I'm the den leader of his Cub Scout den.

**What do you enjoy most about Greater Burlington?** I love the size of Burlington. It's big enough that there are always events going on and things to do, but small enough that you will always find familiar faces.

**Unique about me:** In college, I changed my major several times, got my degree in anthropology, and ended up working in banking. I've learned to keep an open mind about the future over the years.

### **Greater Burlington Young Professionals**

A professional and social group for individuals between the ages of 21 - 40.

# JANUARY EVENTS

4 – That's Yesterday's News  
Burlington Public Library  
10 AM - 12 PM  
Burlington.lib.ia.us

4 – Lundaytime Chamber Music  
First United Methodist Church  
3 - 4 PM  
UMCBurl.org

6 – Random Rocks of Kindness  
Burlington Public Library  
11 am - 12 pm  
Burlington.lib.ia.us

8 – Civic Music - Fandango!  
Capitol Theater  
7:30 PM  
BurlCivicMusic.com

10 – Library Trivia Night  
Burlington Public Library  
6 - 8 PM  
Burlington.lib.ia.us

11 – Battle of the Brushes  
The Art Center of Burlington  
4 pm  
ArtCenterofBurlington.com

11 – Boy Band Project  
The Legacy Theater, Carthage, IL  
7 PM  
TheLegacyTheater.com

15 – Lunchtime Chamber Music  
First United Methodist Church  
12:15 - 12:45 PM  
UMCBurl.org

18 – Eggs & Issues  
Greater Burlington Partnership  
7:30 AM  
GreaterBurlington.com

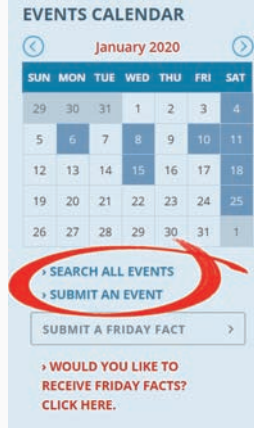
18 – Arctic Challenge  
Bent River Brewing Company  
1 PM  
BurlingtonBentRiver.com

18 – Elton Dan & The Rocket Band  
Capitol Theater  
7:30 PM  
BurlingtonCapitolTheater.com

25 – Eagle Watch  
Port of Burlington  
10 AM - 12 PM  
DMCConservation.com

26 – Bridal Fair  
PZAZZ! Convention & Event Center  
11 AM - 3 PM  
ThePzazz.com

31 – Annual Dinner  
PZAZZ! Convention & Event Center  
6 PM  
GreaterBurlington.com



### ENTER YOUR EVENTS:

Reach locals and visitors with your business events and information. Visit [GreaterBurlington.com](http://GreaterBurlington.com) and click on "Submit An Event" to have your event included in the web calendar and considered for this newsletter calendar.

### GET MORE EVENT DETAILS:

by clicking on "Search All Events"

## SAVE the DATE

### FEBRUARY

8 – Chocoholic Frolic  
Downtown Burlington  
1 PM

12 & 13 – Southeast Iowa Days  
Des Moines

15 – Eggs & Issues  
Greater Burlington Partnership  
7:30 AM

22 – Southeast Iowa STEM Festival  
Southeastern Community College  
10 AM

### MARCH

16 - 18 – 5th & 8th Grade Career Fair  
Southeastern Community College

21 – Eggs & Issues  
Greater Burlington Partnership  
7:30 AM

MANY DESTINATIONS  
ONE AMAZING PLACE



FIRE AND WATER  
CLEAN UP & RESTORATION  
24 HOUR EMERGENCY SERVICE



COMMERCIAL OR RESIDENTIAL  
COMPLETE MOVE-OUTS  
MOLD MITIGATION & REMEDIATION  
TRAINED, UNIFORMED PROFESSIONALS

**SERVPRO**  
OF BURLINGTON  
319-754-8050 OR 877-754-8050  
WWW.SERVPROBURLINGTON.COM



**MACK NEW & USED TRUCKS**  
732 Wapello St. Mediapolis  
319-394-9143 SINCE 1956  
[www.hlmack.com](http://www.hlmack.com)



- Motorola Two-Way Radios
- Security Cameras/ CCTV
- Alarm & Monitoring Systems
- Public Address Systems

### We Provide

- Technical service, maintenance, and support
- Software and support agreements
- Site survey & Elevations
- System Design
- Turnkey Installation

126 N Main St Mt Pleasant • 319-385-7650  
[www.engineering.com](http://www.engineering.com)

# Celebrating BUSINESS SUCCESSES



## COUNTRY TREASURES

Country Treasures celebrates their Grand Opening at 3258 Rock Spring Rd, Burlington



## STATE FARM INSURANCE – JASON HUTCHESON

State Farm Insurance – Jason Hutcheson celebrates their Grand Opening at 313 E Agency Rd Ste 1, West Burlington.



## CITY OF BURLINGTON – TOT SPOT PLAY AREA

The Park and Recreation Department, City of Burlington renovates the Tot Spot Play Area located in Dankwardt Park



## FLINT RIVER INDOOR SHOOTING RANGE

Flint River Indoor Shooting Range celebrates their Grand Opening at 10840 Mill Dam Rd, Burlington.

## Weigert's Handyman Service - Quality Service, Fair Pricing

Simple home improvement can help save you money on your heating and cooling bills. Weigert's Handyman Service can install windows and doors that are energy efficient, put caulk and weather stripping around doors and windows, install door sweeps, and put in insulation.

And what better way to start the new year (and use your income tax refund!) than to give yourself a kitchen or bathroom remodel. Call 319-209-2013 or 319-572-4797 to schedule your project today!

## Celebrating a Century with SCC Stories

The year 2020 marks the 100th anniversary of SCC. To commemorate this momentous milestone, the college plans to celebrate its rich history of graduates and staff with a year of events and activities — and storytelling.

"SCC has amassed tens of thousands of alumni, each with their own story," Ash says. "We're just as proud of our famous and high-profile alumni as we are of those who are our neighbors, friends, and co-workers."

The college looks forward to collecting and sharing these stories through the 100 Years, 100 Stories Project.

Alumni, students, and neighbors are encouraged to submit stories of how SCC or its preceding institutions played a pivotal role in their lives at [SCC100Years.com](http://SCC100Years.com).



To submit member information, contact Brenda Levitt

## 2020 tips from the DMC Regional Waste Commission



Area Recyclers

- Go curbside with your recycling! It's simple, easy, efficient, and effective! Stop in at Area Recyclers to get your recycling bin today.
- Remove all caps from bottles and throw them away prior to recycling.
- The HazChem Center, located inside the DMC Regional Landfill scale building, is your resource for disposal of household chemicals and e-waste, including TVs.
- Appliances should be taken to Area Recyclers for recycling

For more information visit the website at [DMCWaste.org](http://DMCWaste.org) or find us on Facebook keyword "Area Recyclers."

## First United Methodist Church - Lunchtime Chamber Music

Every third Wednesday from September through June, add some cultural enrichment to your lunch hour with the Burlington Lunchtime Chamber Music Series. The concerts are free and open to the public. On January 4 from 3 - 4 PM, join us for a special afternoon concert featuring violinist Vidya Mullangi performing works by Bach, Max Bruch and Debussy.

For more information, follow Burlington Lunchtime Chamber Music Series on Facebook.

## Eagle Watch - January 25, 10 AM - 12 PM

Learn about bald eagles during a short program at the Welcome Center, then head to Lock and Dam 18 to help count eagles. All ages, free, no registration required.

Visit [DMCConservation.com](http://DMCConservation.com) for more information.

**Air Choice One**

**SOUTHEAST IOWA REGIONAL AIRPORT**

**DAILY FLIGHTS**  
Chicago, Minneapolis St. Paul,  
Mason City, and St. Louis  
[AIRCHOICEONE.COM](http://AIRCHOICEONE.COM) / 1-866-435-9847

**SG** General Contractor

**CONSTRUCTION**

- Design
- Engineering
- Construction

2204 West Mt. Pleasant Street  
West Burlington, IA 52655  
319-752-7154  
[ron@sgconstructco.com](mailto:ron@sgconstructco.com)  
[www.sgconstructco.com](http://www.sgconstructco.com)

**RIDDLE'S JEWELRY**

Westland Mall  
550 South Gear Avenue  
W. Burlington, IA

Check us out online: [RiddlesJewelry.com](http://RiddlesJewelry.com)

## NEW BEGINNINGS

by Kay Weiss

In 1920, a reorganization committee of the Commercial Exchange organization convened a meeting of representatives of all the “civic, recreative and commercial organizations in the city” to discuss the proposed formation of “a Greater Burlington community organization.” Chaired by John Pettibone, the group believed that “the formation of the body was the most important [decision] that has devolved upon the citizens of Burlington in many years.” On April 20, the *Burlington Gazette* reported that the formation of the Greater Burlington Association had been achieved. “Like a lighthouse in the storm the Greater Burlington Association appears as a beacon light to guide the good ship Civic Development safely into the port of rapid growth and prosperity. The association is destined to become the nucleus of community growth and development.”

Throughout the history of the area, local businesses had worked together to promote the future development of commerce in Burlington. In 1855 The Board of Trade was established to work together to make Burlington a great place to live. The Board of Trade reorganized in 1873, and fifteen years later the group adopted the name of the Burlington Commercial Club. By 1920, the club sought to expand their influence to aid the growth of the community by including those outside the retail and manufacturing core through the formation of the new GBA group. The GBA’s first officers were M. E. Finck, Murray Iron Works, as president; F. M. Cox, secretary of the Trades and Labor Assembly, as vice-president; and Robert Corlett, Principal of Corse School, as secretary. Other Board members were Harold Cooper, Leon Eisfeld, J. J. Fleming, Tracy Garrett, Thomas Green, Chas. W. Herschenbach, Ed L. Hirsch, Ray Humphrey, C. R. Kelsey, Dr. H. A. Leipziger, P. G. Parker, Miss S. C. Scott, E. M. Sipple, Harry Turner, and John Walz.

On June 28, 1920, the new group held its first open forum with officials to discuss issues of the day. Three people spoke. “Dr. [Naboth] Osborne, pastor of the Congregational church, made a powerful plea for freedom of speech and freedom of the press. He said ‘the Greater Burlington Association will provide a great forum, before which everybody can talk on any subject under the sun. The Greater Burlington movement is like a Billy Sunday revival. And if this movement is not to die out, its spirit will have to be maintained. This Greater Burlington association is an indication of the social sanity of Burlington.’” When addressing issues that he thought should concern the new GBA, C. C. Clark, local attorney, made two points: that the GBA should get behind the work of the Social Services league to help people help themselves, and that Burlington has “the worst streets to be found anywhere in Iowa” and that the GBA should understand that roads will prove important in Burlington’s vitality. The third speaker, George S. Tracy, “gave a fine, rapid fire talk in which he convinced his hearers that there was nothing the matter with Burlington that cannot be remedied.” He commented that there were no empty houses, no unemployed men, and that the new traffic ordinance should be printed on a card “to be handed to all strange auto drivers.” He was an advocate for a single community drive for funding for different projects throughout the year.

In June, 1929, the GBA membership voted to change the name of the group to the Burlington Chamber of Commerce, and in 1976 the word “Area” was inserted into the name as well.



